

**Promata**  
Automotive

## Mata C Tyre Pressure Monitoring System



**Promata**  
Automotive

All rights reserved.  
Sinotek Co.,Ltd. reserves the  
rights to change designs and  
specifications for improving the  
products without prior notice.

[www.promata.cn](http://www.promata.cn)

Product Manual

## Welcome

Thank you for purchasing Promata® TPMS!

Promata® TPMS notifies you when your vehicle's tyre pressure is low/high, when it is going flat, or when tyre temperature is high. By helping to maintain proper tyre pressure and temperature, Promata® TPMS can increase your safety on the road. It can improve your vehicle's handling, better fuel economy, reduce braking distance and decrease tyre wear.

## For Your Safety

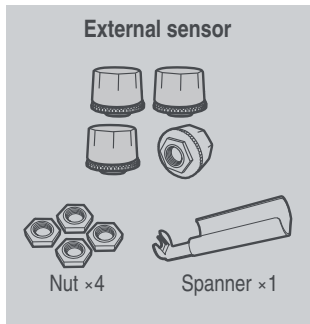
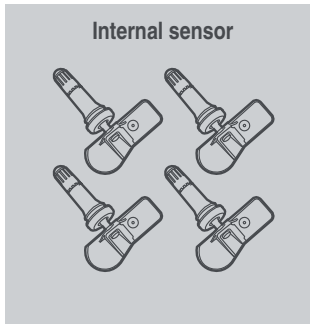
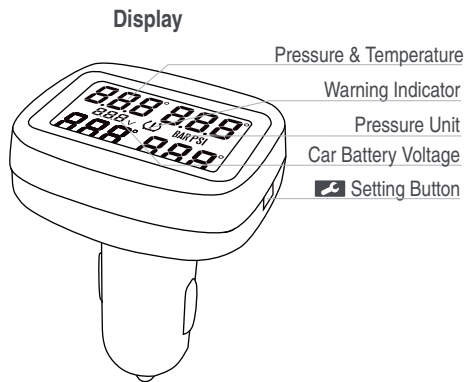
Before using the product, please read and follow the manual instructions carefully.

1. This product must be correctly installed before use. Avoid damaging the sensor and the wheel when installing.
2. This product is a safety accessory and cannot directly prevent puncture or tyre leakage. Please react promptly to the product warning signals and resolve abnormal tyre conditions before getting back on the road.
3. The user is responsible for safe driving, taking care of the vehicle, and ensuring the correct installation and use of the product. Sinotek assumes no liability for damages and losses.
4. All sensors are already paired to the display in the factory. Users DO NOT need to pair the sensors to use this product for the first time.

## Table of Contents

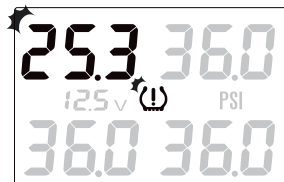
1. Contents	01
2. TPMS Warning Signals	02
3. Installation	03
External sensor	03
Internal sensor	04
Display installation	05
Functional test after installation	05
4. TPMS Settings & Functions	06
Setting baseline tyre pressure	06
Checking tyre temperature	06
Pressure unit selection	06
5. Changing Sensor Battery	07
6. Sensor Pairing	07
7. Product Specifications	10
8. Q&A	11

# 1 Contents



# 2 TPMS Warning Signals

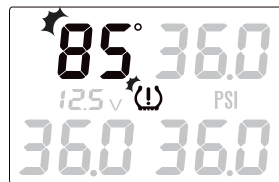
When the unit detects abnormal tyre conditions or low sensor battery, it will emit audio and visual warning.



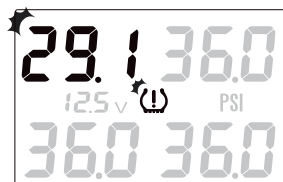
Low pressure alarm



High pressure alarm



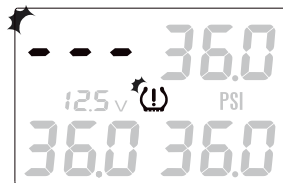
High temperature alarm



Air leakage alarm



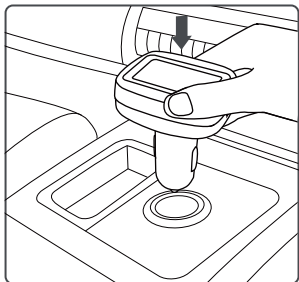
Low sensor battery



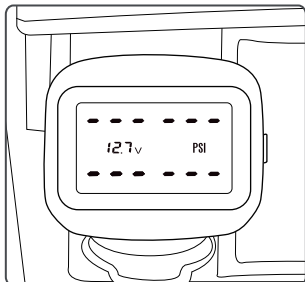
Sensor failure signal

### 3 Installation

#### Display Installation

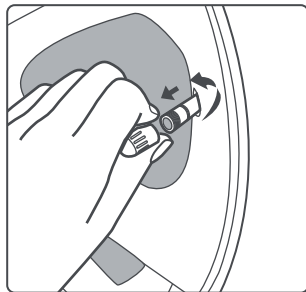


i. Plug the display into the cigarette lighter socket.

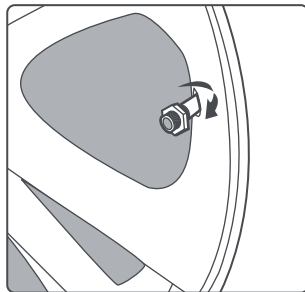


ii. Turn ACC on, the display will turn on.

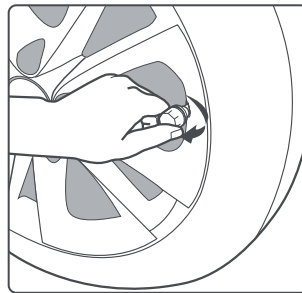
#### External Sensor Installation



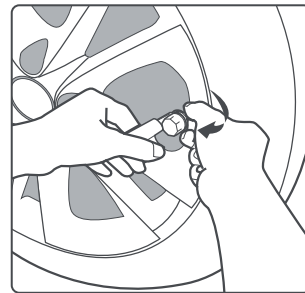
i. Unscrew the valve cap



ii. Thread the nut through

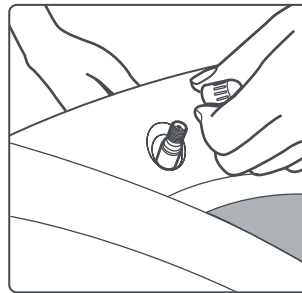


iii. Screw on the sensor

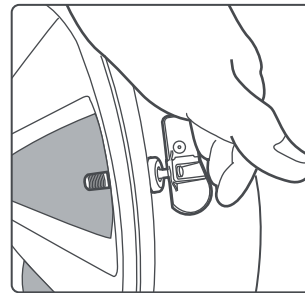


iv. Tighten the nut with the spanner

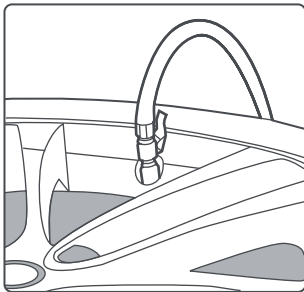
#### Internal Sensor Installation



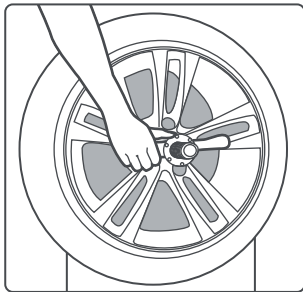
i. Remove the original tyre valve



ii. Install the internal sensor

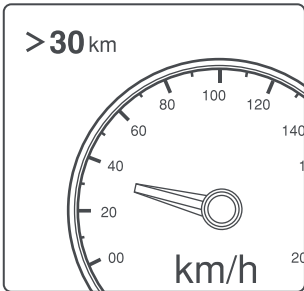


iii. Inflate the tyre

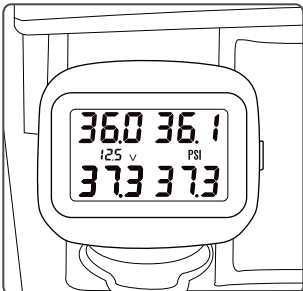


iv. Perform wheel balancing

## Functional Test After Installation




i. Please drive the vehicle over 30km/h (19mph) for a few minutes.






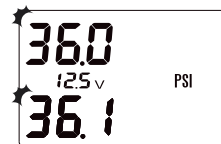
ii. The display will go from "--" to real-time data during the drive. If installation is successful, all tyre data will be displayed.

## 4 TPMS Settings & Functions

The Setting button  is the single button located on the right side of the display. It can be used to set baseline tyre pressure, check tyre temperature and select pressure unit.


### Setting Baseline Tyre Pressure

1. Hold the Setting button  and let go when you hear two beeps.
2. The left front tyre pressure and left rear tyre pressure will flash on the screen. The system takes these real-time pressures and sets them as the baseline pressure for each axle. The alarm range is  $\pm 25\%$  of baseline pressure.
3. Hold the Setting button  for 3 seconds to save and exit. If the user does not press  button within 30 seconds, the display will not save the new baseline pressure.




Note: If no sensor data is detected, at step 2, the display will show the previous baseline tyre pressure. Default baseline pressure: 36 PSI.

### Checking Tyre Temperature

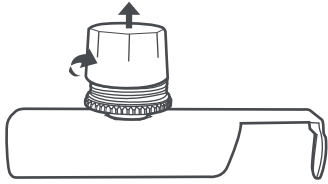
Hold the Setting button  and let go when you hear one beep. The display will show all four tyre temperatures.

### Pressure Unit Selection

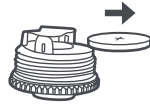
Hold the Setting button  and let go when you hear three beeps. The pressure unit will switch to BAR or PSI.

## 5 Changing Sensor Battery

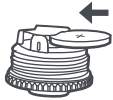
Battery replacement is only available for external sensors. When the sensor battery is low, please replace the button cell battery as shown below:



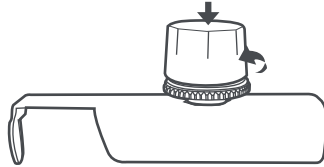
i. Unscrew the sensor cover



ii. Remove the old battery



iii. Replace with new CR1632 battery  
(the + side faces upwards)



iv. Screw on the sensor cover

⚠ CAUTION: Please keep battery away from children.

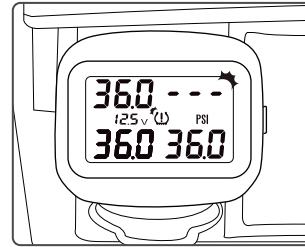
## 6 Sensor Pairing

Sensor pairing is used to pair a new sensor or a missing sensor to the display. All Promata TPMS units come with sensors already paired to the display.

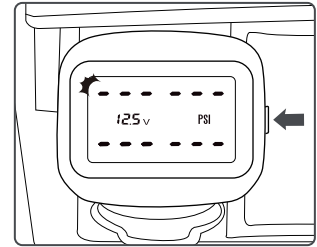
Mata C utilises FreshData™ Technology. This means that the display will show “--” at the start of every drive and refresh real-time data during the drive.

This is normal and does not require sensor pairing.

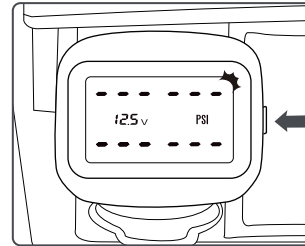
⚠ **WARNING: NO NEED to perform sensor pairing for a new unit!**  
All sensors are already paired to the display in the factory.



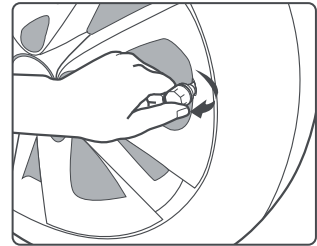
(1) As shown in the picture, the right front sensor is flashing and alarming. We will perform sensor pairing for this sensor.



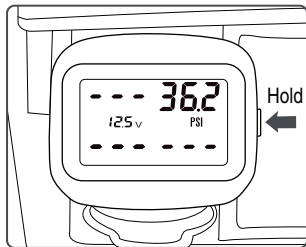
(2) Press  button 5 times to enter Sensor Pairing Mode with a “beep”. “--” will flash in the left front position.



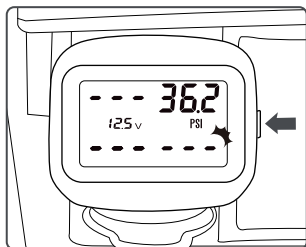
(3) Press  button to select the desired tyre position, the selected tyre position will flash. In this case, the right front (RF) position.



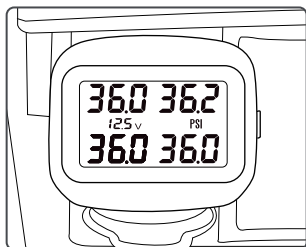
(4) External sensors: slowly screw on the new sensor to the corresponding tyre until data shows up on the display.  
Internal sensors: With sensors installed, inflate or deflate the corresponding tyre until tyre data shows on the display.




(5) Hold  button for two seconds until you hear a “beep” to temporarily save the pairing. Tyre data will stop flashing on the display.



(6) Repeat steps (3)–(5) to pair another sensor, or skip to step (7) to save and exit.



(7) If you have finished programming selected sensors, hold  button for 3 seconds until you hear two “beeps” to exit Sensor Pairing Mode.

## 7 Product Specifications

### Display

Frequency	Operating Voltage	Operating Temperature
433.92MHz ±50KHz	9~16V	-30°C~60°C

### Default Settings

Baseline pressure	Pressure alarm range	High temperature alarm
2.5 bar/ 36 PSI	±25% baseline pressure	80°C

### Sensor Specifications

	Internal sensor specifications	External sensor specifications
Weight	14g±1g	8g±1g
Operating frequency	433.92MHz±50KHz	433.92MHz±50KHz
Pressure monitoring range	0~7 BAR/ 0~99 PSI	0~7 BAR/ 0~99 PSI
Pressure accuracy	±0.1 BAR/±1.5PSI	±0.1 BAR/±1.5PSI
Temperature accuracy	±3°C	±3°C
Battery life	6 years	2 years

## 8 Q & A

**Q** The display is showing "--", what should I do?

**A** Mata C utilises FreshData™ Technology. This means that the display will show "--" at the start of every drive, and refresh real-time data during the drive. This is normal.

**Q** The display is showing "--" and not updating data, what should I do?


**A**

1. Ensure that all the sensors are present;
2. Ensure there is no electronic interference around (e.g. turn off DVRs);
3. Drive the vehicle over 30km/h for 10 minutes; if no update, then:
4. Change sensor battery;
5. If data is still missing, commence sensor pairing.

**Q** Do I need to perform a dynamic wheel balancing?

**A** After installing internal sensors, dynamic wheel balancing is a must. Dynamic wheel balancing is not required for external sensors.

**Q** The display keeps alarming, how can I silence it?

**A** You can press  button to temporarily silence the display, or unplug the display from the socket.

**Q** The display is constantly alarming for low pressure, what should I do?

**A**

1. Inflate the tyre to the appropriate pressure as soon as possible; or
2. Please refer to page 6 to set a new baseline pressure.

**Q** If one of my TPMS sensors becomes lost or damaged, can I just buy a new sensor and pair it to my existing TPMS display?

**A** Yes, our sensors are interchangeable! An individually purchased sensor needs to be paired to your existing display to work. For sensor pairing instructions, please refer to page 7.

**Q** Why is my display is still lit even though ACC is turned off?

**A** Some vehicles' cig sockets will still be powered by electricity even though ACC is turned off. In this case, the display will go into "sleep mode" after 4 minutes.

**Q** During a wheel rotation, how can I make sure the sensors are in the right position?

**A** There are two methods:

1. External sensors can be taken off and screwed onto the correct position; or
2. Users can pair all the internal sensors to the correct position following Sensor Pairing instructions on page 7.

**Q** The display warns me of low sensor battery, but it stops after a while. Why is that so?

**A** There are two cases when the system "thinks" the sensor battery is low:

1. The sensor battery is low. The user needs to change the battery ASAP.
2. The temperature is less than -40°C and the battery cannot output normal power. The user does not need to change the battery in this case.

**Q** Where do I find help?

**A** The first point of contact is your direct seller. For more help, please send email to [help@promata.cn](mailto:help@promata.cn)