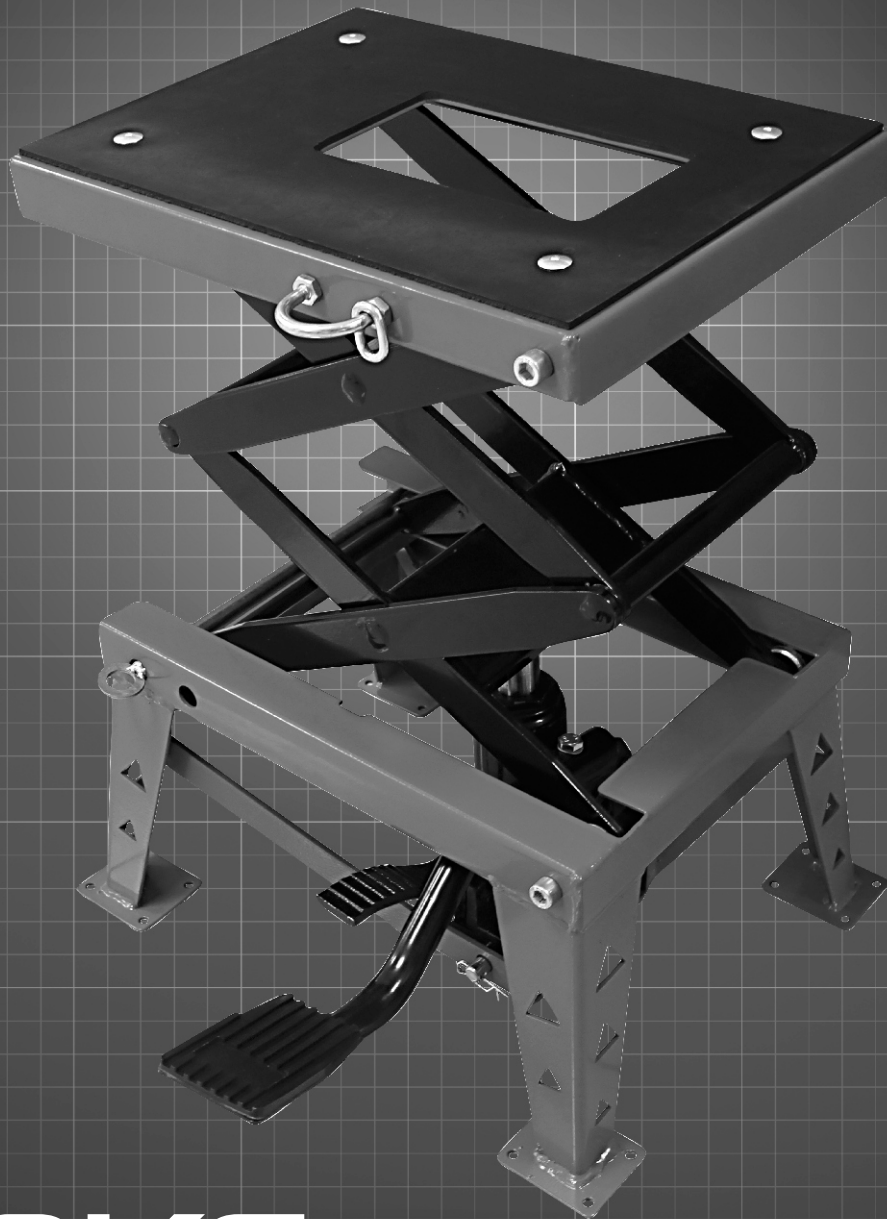


**ToolPRO**

**3 YEAR**  
WARRANTY



# 150KG

## DIRT BIKE SCISSOR LIFT

Product Manual

PLU: 620696

## WARRANTY

Our product is guaranteed to be free from quality and manufacturing defects for a period of **36 months**.

If your product becomes defective during this period, **SRGS PTY LTD** will offer you either a replacement, credit or refund where a product is faulty; wrongly described; different from the sample shown to you or do not do what they are supposed to do.

This warranty will not cover substantially modified product; misuse or abuse of the product contrary to user instructions or packaging label; change of mind and normal wear and tear.

Our goods come with guarantees that cannot be excluded under the Australian Consumer Law. You are entitled to a replacement or refund for a major failure and for compensation for any other reasonably foreseeable loss or damage. You are also entitled to have the goods repaired or replaced if the goods fail to be of acceptable quality and failure does not amount to a major failure.

To claim the warranty, take the product to the front Service Desk of your nearest store of purchase. You will need to show receipt or other proof of purchase. Additional information may be required to process your claim. Should you not be able to provide proof of purchase with a receipt or bank statement, identification showing name, address and signature may be required to process your claim.

Any expenses relating to the return of your product to the store will normally have to be paid by you. For online store purchases, **SRGS PTY LTD** will pay for the return freight for any product assessed as having a major failure.

The benefits to the customer given by this warranty are in addition to other rights and remedies of the Australian Consumer Law in relation to the goods or services to which this warranty relates.

This warranty is provided by **SRGS PTY LTD, 6 Coulthards Avenue, Strathpine QLD 4500, Australia. Phone: 1300 175 010.**

## CAUTION

1. Use on a hard level surface (e.g. concrete garage/workshop floor).
2. Conduct a pre-operational check of the unit.
3. Do not operate this unit while the motorcycle is mounted. Do not mount the motorcycle while the unit is extended.
4. Centrally locate the load to the middle of the **Dirt Bike Scissor Lift**.
5. Use a strong point of the motorcycle. Consult the vehicle manufacturers owner's manual for guidance.
6. Ensure the motorcycle being lifted is firmly secured to the **Dirt Bike Scissor Lift** by using the supplied mounting points.
7. Once the desired height is reached, fully engage the locking mechanism.
8. Do not extend the height of the lift/stand beyond its maximum working height.
9. Do not use any spacers/shims to extend height (e.g. bricks, timber).
10. Do not lay or sit under motorcycle while **Dirt Bike Scissor Lift** is in use.
11. Do not modify or add accessories to this **Dirt Bike Scissor Lift**.

## SPECIFICATIONS

Maximum Safe Working Capacity: 150kg

Minimum Working Height: 310mm

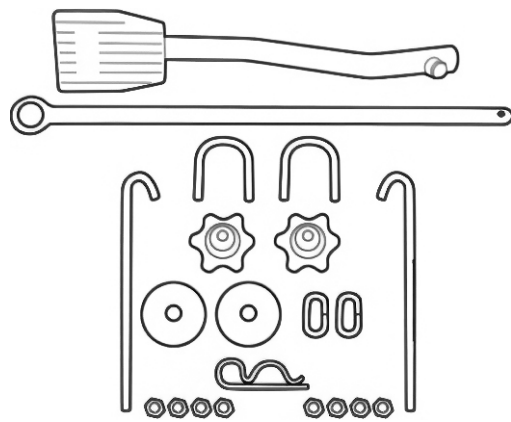
Maximum Working Height: 800mm

Platform Size: 380 x 280mm

## PREPARATION

Ensure that all parts are present before assembling the **150kg Dirt Bike Scissor Lift**. Do not attempt to assemble or use the product if any parts are missing or damaged.

Ref #	Description	Qty
4	J-Hook	2
5	Washer	2
6	Threaded Knob	2
13	Lifting Foot Pedal	1
15	Safety Locking Bar	1
17	R Pin	1
26	M8 Nut	8
27	U Bolt with Chain	2



## ASSEMBLY INSTRUCTIONS

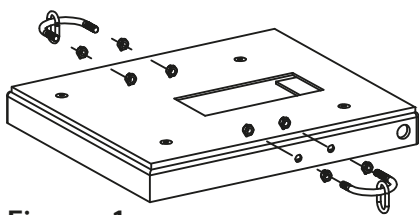


Figure 1

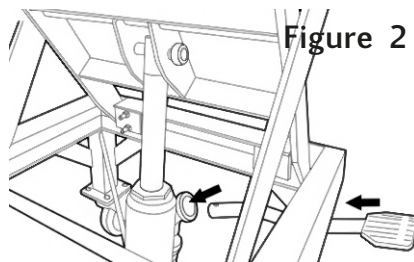


Figure 2

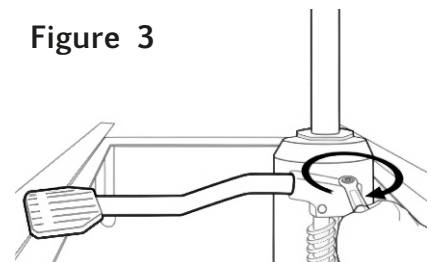


Figure 3

1. Install 8 x M8 Nut (26) and 2 x U Bolt with Chain (27) onto both sides of Platform Plate (25) as shown in Figure 1. Ensure that the M8 Nut (26) are tighten enough.
2. Install the Lifting Foot Pedal (13) to the Hydraulic Pump (20) as shown in Figure 2.
3. Screw in the M8 Bolt (7) as shown in Figure 3. Ensure it is tighten enough.

Tip: There is a cable tie be tied surrounding the piston lever and the base of hydraulic pump for easier to install the Lifting Foot Pedal (13). Remember to cut and remove this cable tie once the Lifting Foot Pedal (13) is installed completely.

The **150kg Dirt Bike Scissor Lift** is now ready to use.

## OPERATING INSTRUCTIONS

1. This **Dirt Bike Scissor Lift** should be used for lifting and lowering only.
2. BEFORE INITIAL USE: Lubricate all pivoting and moving points with lubricating oil and after every 50 lifting/lowering cycles or 3 months (whichever occurs first).
3. Place the motorcycle in a suitable area, checking that the surface on which the **Dirt Bike Scissor Lift** is solid and flat.
4. Place the **Dirt Bike Scissor Lift** under the motorcycle, ensure that the centre of gravity of the motorcycle is centrally located to the middle of the lift/stand's platform.
5. Pump the lifting foot pedal to raise the platform until it makes contact with the underside of the motorcycle.
6. Ensure the motorcycle being lifted is firmly secured to the **Dirt Bike Scissor Lift** by:
  - a) Hooking on the J-Hooks (4) to the Chains of the assembled U Bolt with Chains (27), they are the supplied mounting points of **Dirt Bike Scissor Lift**.
  - b) Using the strong points of the motorcycle. Consult the vehicle manufacturers owner's manual for guidance.
  - c) Passing through the J-Hooks (4) into the strong points of motorcycle, place the Washers (5) into the end of J-Hooks (4), screw in the Threaded Knobs (6) until they are tighten enough.
7. Slowly raise the motorcycle by pumping the lifting foot pedal. Recheck stability once the motorcycle is off ground.
8. Once the desired height is reached, fully engage the locking mechanism [the Safety Locking Bar (15) and the R Pin (17)]. Do not extend the height of the **Dirt Bike Scissor Lift** beyond its maximum working height.
9. TO LOWER: Remove the locking mechanism [the Safety Locking Bar (15) and the R Pin (17)], depressing the Release Pedal (29) until the **Dirt Bike Scissor Lift** is in the fully lowered position.

## TO ADD OIL

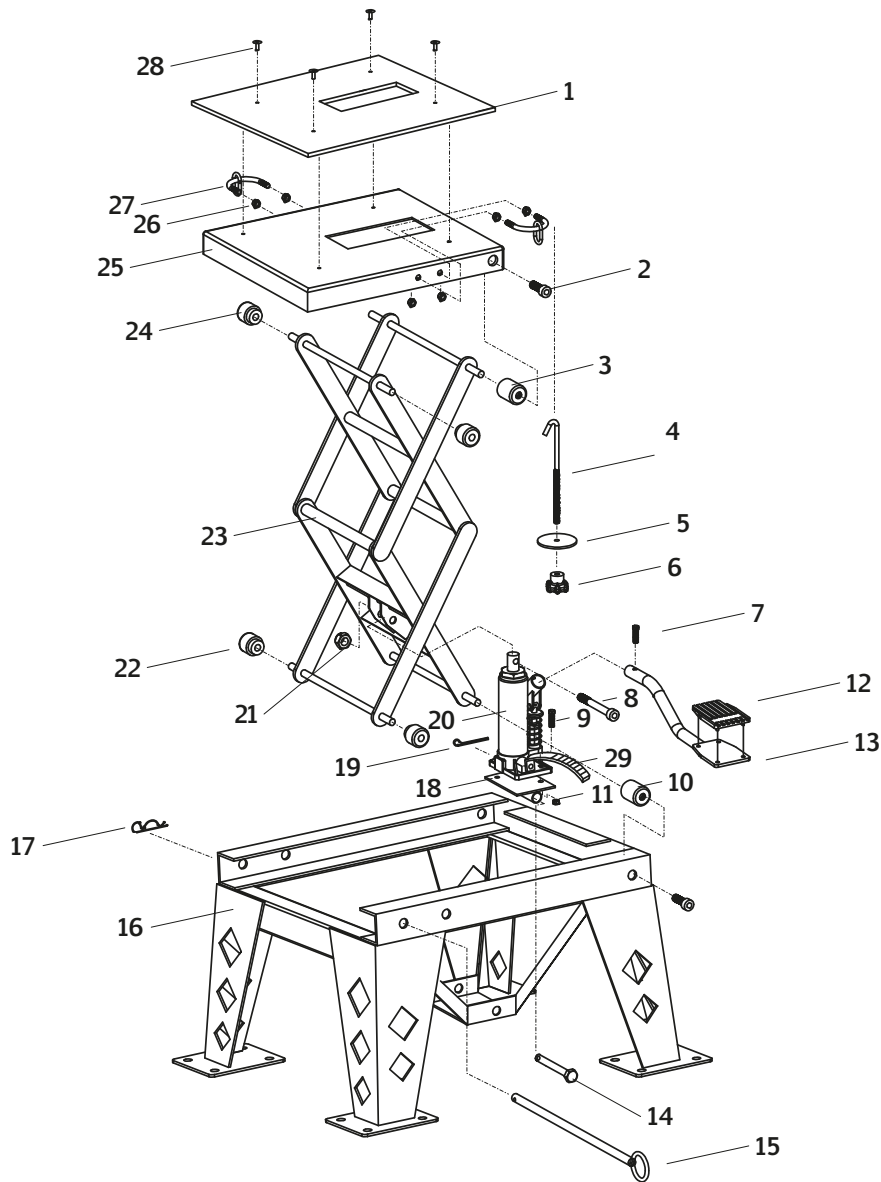
Place the **Dirt Bike Scissor Lift** with the oil filler plug be horizontally then remove the oil filler plug. Fill until oil is level with the filler plug hole. It is recommended to use a good grade Hydraulic Fluid (ISO 10-15 or equivalent).

## MAINTENANCE

1. Keep the **Dirt Bike Scissor Lift** clean and well lubricated.
2. Lubricate all pivoting and moving points with lubricating oil and after every 50 lifting/lowering cycles or 3 months (whichever occurs first).
3. When not in use, always leave the **Dirt Bike Scissor Lift** in the fully lowered position.
4. The **Dirt Bike Scissor Lift** should be inspected for any abnormal conditions such as cracks in the welds and damaged, bent or missing parts before each use. The **Dirt Bike Scissor Lift** showing any signs of not being in full operating condition should not be used.

# 150KG DIRT BIKE SCISSOR LIFT

## PARTS LIST AND EXPLODED DIAGRAM



Ref #	Description	Qty	Ref #	Description	Qty
1	Rubber Pad	1	16	Base Frame	1
2	M10 Inner Hex Bolt	4	17	R Pin	1
3	Upper Fixed Roller	2	18	Base Plate	1
4	J-Hook	2	19	Split Pin	2
5	Washer	2	20	Hydraulic Pump	1
6	Threaded Knob	2	21	M10 Nut	1
7	M8 Bolt	1	22	Lower Removable Roller	2
8	M10 Bolt	1	23	Assembled Lifting Arm	1
9	M8 Bolt	2	24	Upper Removable Roller	2
10	Lower Fixed Roller	2	25	Platform Plate	1
11	M8 Nut	1	26	M8 Nut	8
12	Foot Pedal Pad	2	27	U Bolt with Chain	2
13	Lifting Foot Pedal	1	28	Rivet	4
14	Base Plate Pin Ø20 x 150	1	29	Release Pedal	1
15	Safety Locking Bar	1			

**ToolPRO**

PLU: 620696

CODE: JL-M02301

Manufactured and packaged for  
SRGS PTY LTD.

ABN 23 113 230 050

6 Coulthards Avenue, Strathpine,  
Queensland 4500, Australia.

MADE IN CHINA.



Recyclable Paper