



# STEEL MESH GARDEN CART

## ASSEMBLY MANUAL



*"If the product fails to perform as specified  
we'll happily offer a refund or exchange"*

Manufactured and packaged for SRGS PTY LTD ABN 23 113 230 050  
6 Coulthards Avenue, Strathpine QLD 4500, Australia



# STEEL MESH GARDEN CART

## ASSEMBLY MANUAL



PLU 616467

## SAFETY INSTRUCTIONS

1. Read ALL instructions carefully before use.
2. Do not allow children to use the garden cart unsupervised, this product is not a toy.
3. Always distribute the weight evenly across the base of the garden cart.
4. Do not lean object on the side panels of the cart, drop the sides down before loading extra long items onto the garden cart.
5. Do not inflate tyres more than 30 psi and hand pump only.
6. Do not operate or use items that can cause damage to the tyre or tyre tubes.

## PARTS INDEX

Always check the parts index before you begin assembly to ensure you have all the required parts. You will also require a 12" wrench and a 6" wrench to assemble this garden cart (not included). This product takes roughly 30 minutes to assemble and can be assembled with one person although you may prefer to ask a friend to help you on some parts.

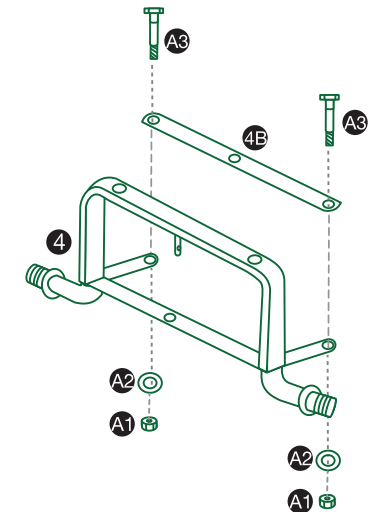
No.	Description	No.	Description
1	Handle	A1	14 x Main Nut
2	Plastic Coupling	A2	14 x Main Washer
3	Yoke	A3	14 x Main Bolt
4	Front Axle Support	B1	Handle Nut
4B	Front Axle Bar	B2	Handle Washer
5	Front Support	B3	Long Handle Bolt
6	Garden Cart Base	C1	4 x Wheel Nut
7	Rear Axle Support	C2	4 x Wheel Washer
8	Left Rear Support	D1	4 x Lock Handles
9	Right Rear Support	P1	Cotter Pin
10	4 x 10" Pneumatic Tyres	P2	8 x Clevis Pin
11	Back Side Panel		
12	Left Side Panel		
13	Right Side Panel		
14	Front Side Panel		

## STEP 1 (SIDE VIEW)

### ASSEMBLE THE FRONT AXLE SUPPORT

Take the Front Axle Support (Part 4, with moving sections not that static one). Take out the flat Axle Bar (Part 4B) and position the Front Axle parts, so that it looks like the diagram on the left.

Use Bolt Parts A3, A2 & A1 to secure each side of Part 4B to Part 4 as pictured.



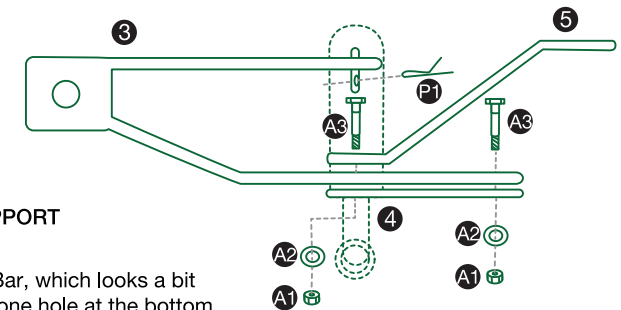
## STEP 2 (SIDE VIEW)

### ATTACH YOKE AND FRONT SUPPORT TO FRONT AXLE SUPPORT

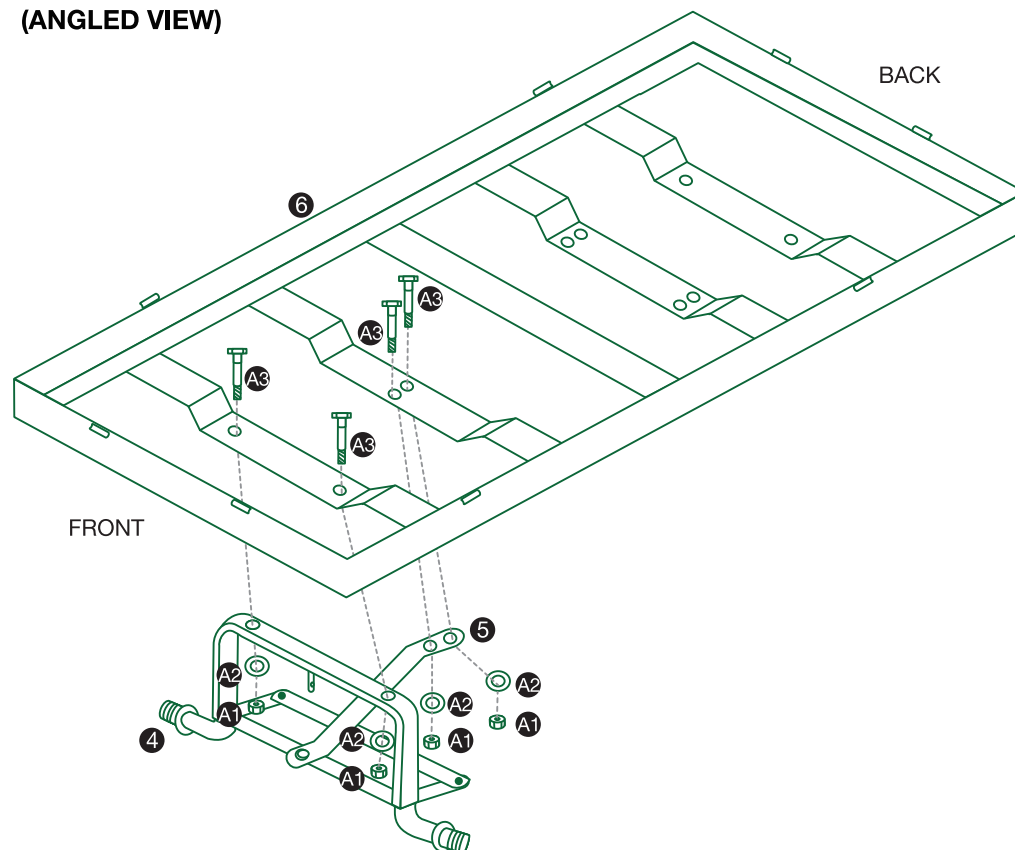
Locate Part 5, the Front Support Bar, which looks a bit like an angled "S" shape and has one hole at the bottom and two holes at the top.

Place the lower end of Part 5 (The end with only one hole) on top of the front lower end of Yoke (Part 3). Then line this on top of the front end (the part opposite the bit that moves from side to side) of the Front Axle Support (Part 4). Use the Bolt Parts A3, A2 & A1 to attach these together at this point.

The top of the Yoke (Part 3) will slot into the top middle protusion of the Front Axle Support (Part 4) which can be fixed into place with the pin (Part P1).



### STEP 3 (ANGLED VIEW)



#### ATTACH FRONT AXLE SUPPORT TO BASE

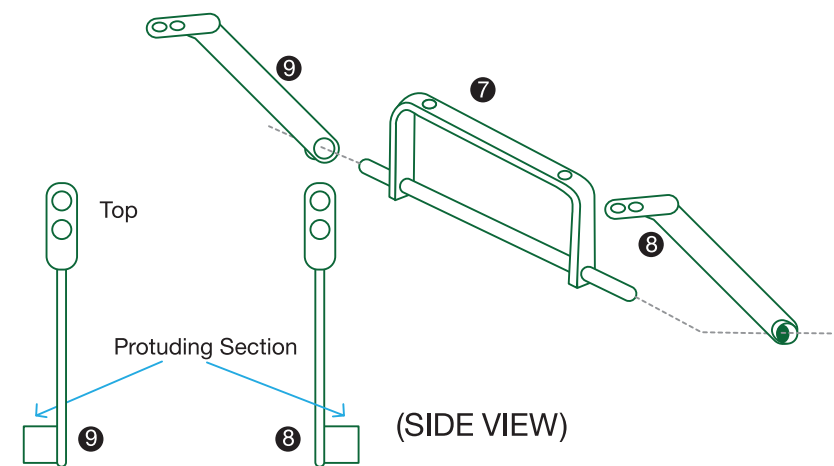
After Step Two, check the base (Part 6) and locate the front end of the base as per the picture above.

Attach the two top holes of the Front Axle Support (Part 4) to the base as pictured using bolt parts A3, A2 & A1.

Attach the top of part 5 to the base using bolt parts A3, A2 & A1 as pictured above.

You may need to insert the bolts in all holes before tightening them as the bar can be a very tight fit.

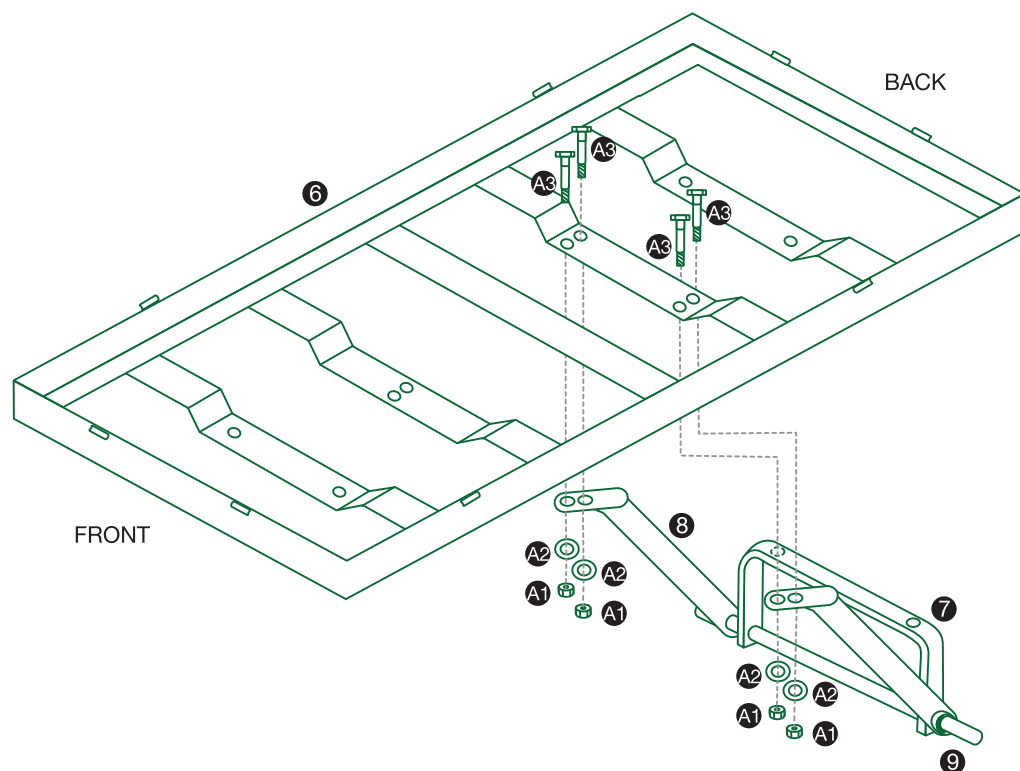
### STEP 4 (ANGLED VIEW)



#### ASSEMBLE REAR AXLE

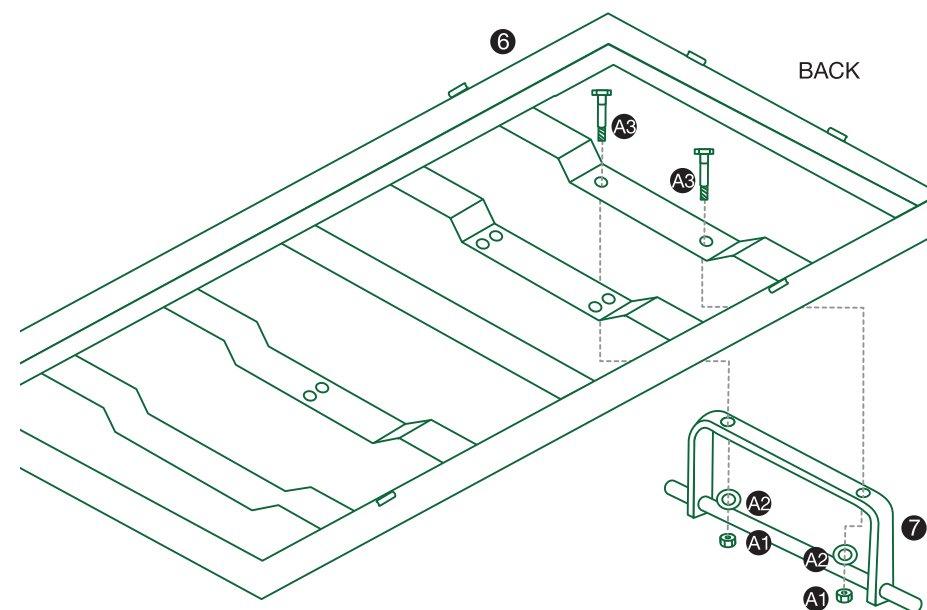
Slide Parts 8 & 9 onto the ends of the Rear Axle Support so that the protruding tunnel section is on the outside as pictured.

## STEP 5 (ANGLED VIEW)



### ATTACH REAR AXLE TO BASE

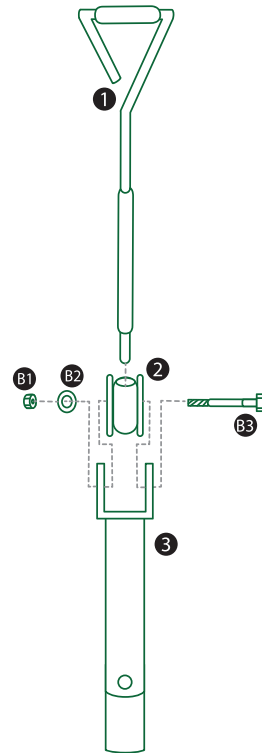
After you have assembled Parts 7, 8 & 9 in Step Four, Attach the tops of Parts 8 & 9 to the base as pictured above using bolt parts A1, A2 & A3.



Then attach the top part of the Rear Axle Support (Part 7) to the base (Part 6) using bolt parts A1, A2 & A3 as pictured to the left. You may need to line up both sections and insert the bolts first before tightening to ensure the sections together first time.



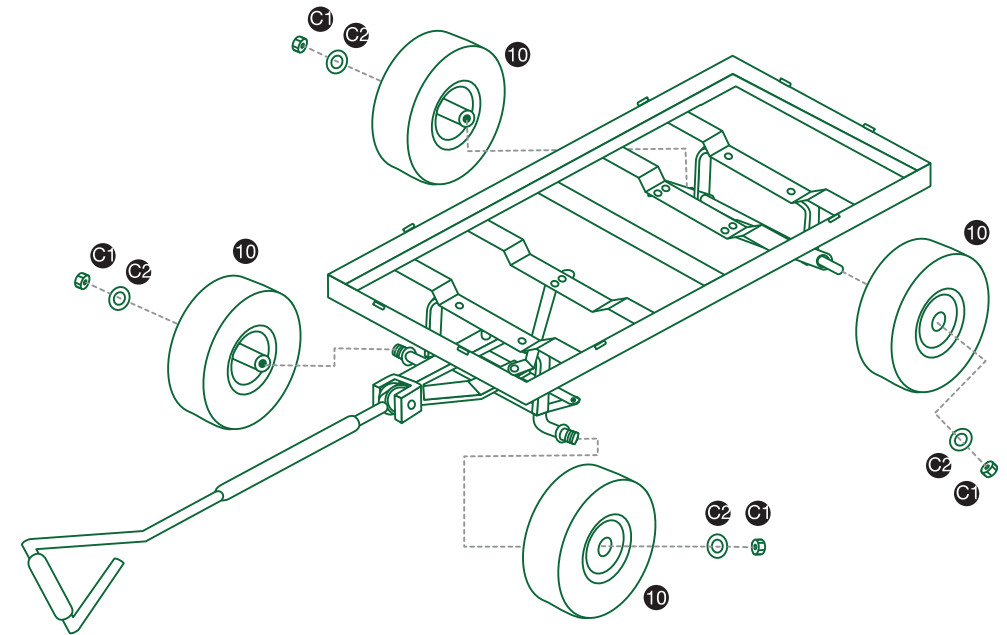
## STEP 6 (SIDE VIEW)



### ASSEMBLE HANDLE

Attach the Handle (Part 1) to the Plastic Coupling (Part 2) and the Yoke (Part 3) as pictured above using the long shoulder bolt parts (B1, B2 & B3).

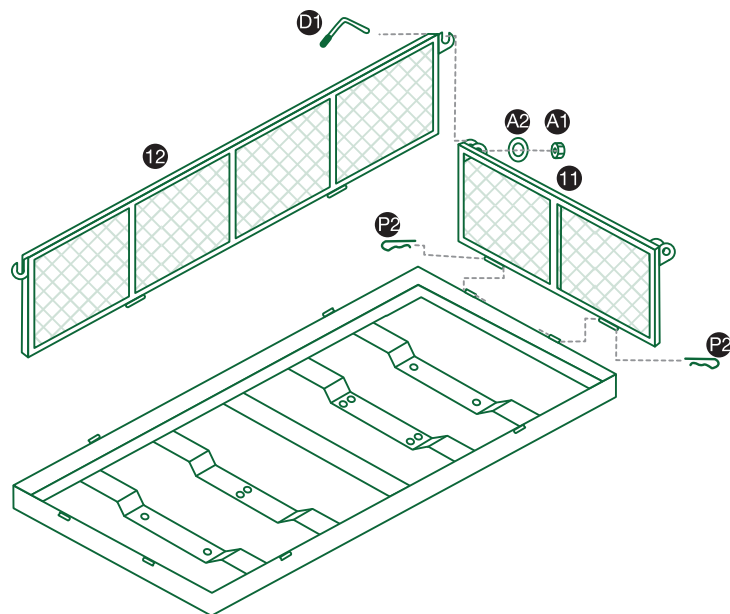
## STEP 7 (ANGLED VIEW)



### ATTACH WHEELS

Attach the wheels to the completed base using the wheel nuts and washers (Parts C1 & C2).

## STEP 8 (ANGLED VIEW)



### ADD DROP DOWN SIDES

Attach the sides to the completed base unit using the pins P2 (two per side). The sides will at first not stay upright on their own.

To fix sides (parts 11, 12, 13 & 14) in an upright position use the Lock Handles (Part D1) inserted between two adjacent side panels.

Handles Part D1 may come preassembled on the front and back side panels.

**Congratulations, Your Metal Cart is now ready for use!**

## WARRANTY

Our product is guaranteed to be free from quality and manufacturing defects for a period of 12 months.

If your product becomes defective during this period, SRGS PTY LTD will offer you either a replacement, credit or refund where a product is faulty; wrongly described; different from the sample shown to you or do not do what they are supposed to do.

This warranty will not cover substantially modified product; misuse or abuse of the product contrary to user instructions or packaging label; change of mind and normal wear and tear. Our goods come with guarantees that cannot be excluded under the Australian Consumer Law. You are entitled to a replacement or refund for a major failure and for compensation for any other reasonably foreseeable loss or damage. You are also entitled to have the goods repaired or replaced if the goods fail to be of acceptable quality and failure does not amount to a major failure.

To claim the warranty, take the product to the front Service Desk of your nearest store of purchase. You will need to show receipt or other proof of purchase. Additional information may be required to process your claim. Should you not be able to provide proof of purchase with a receipt or bank statement, identification showing name, address and signature may be required to process your claim.

Any expenses relating to the return of your product to the store will normally have to be paid by you. For online store purchases, SRGS PTY LTD will pay for the return freight for any product assessed as having a major failure.

The benefits to the customer given by this warranty are in addition to other rights and remedies of the Australian Consumer Law in relation to the goods or services to which this warranty relates.

This warranty is provided by SRGS PTY LTD, 6 Coulthards Avenue, Strathpine QLD 4500, Australia. Phone: 1300 175 010.