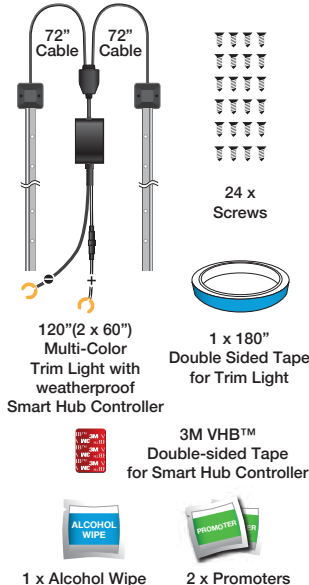


SMART EXTERIOR TRIM LIGHTING KIT



Instruction Manual

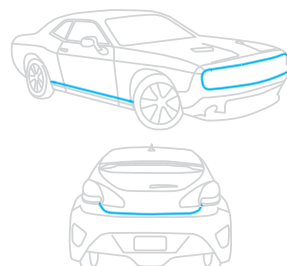
PACKAGE CONTENTS



TECHNICAL SPECIFICATIONS

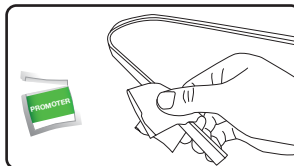
Working voltage: DC 12V Only
Bluetooth distance: 30ft (no obstacle)
Frequency band: 2.4 GHz
Maximum amperage draw: 0.1A

INSTALLATION

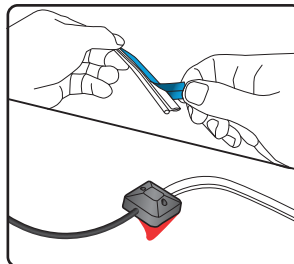


- 1) Choose your desired location. (see suggestions above)
- 2) Clean surface thoroughly with isopropyl alcohol. Dry completely.

INSTALLATION CONT...

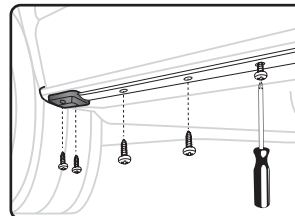


- 3) Apply adhesive promoter on the surface of the Trim Light.

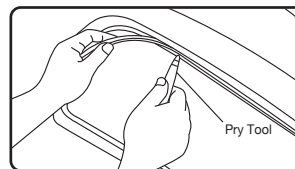


- 4) Apply double sided tape on the Trim Light and remove the protective layer. Remove the 3M VHB™ tape backer on the back of LED emitter.

INSTALLATION CONT...



- 5a) Mount the Trim Light and LED emitter on your vehicle and secure with the provided screws and tighten with a Phillips Screwdriver.



- 5b) Use a pry tool if you intend to push the Trim Light in the space between panels. (Pry tool is not included.)

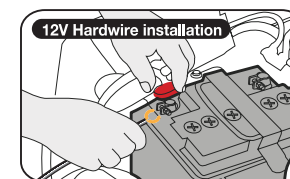
INSTALLATION CONT...



- 6) Route the power cable inside the vehicle. Secure the Smart Hub Controller using the provided 3M VHB™ double sided tape. Connect the hardwire cables to the vehicle's battery.

NOTE:
• For use with 12V power only.
• Suitable temperature for installation is 70°F (21°C) or above.

POWER



Smart Hub Controller hardwire cables are color coded, **BLACK AND WHITE** for POSITIVE (+) and **BLACK** for NEGATIVE (-). Connect the **BLACK AND WHITE** cable to the POSITIVE (+) battery clamp as illustrated. The POSITIVE battery post will be slightly larger than a PLUS (+) sign. There may also be a **RED** protective cover over the positive battery post. Connect the **BLACK** cable to the NEGATIVE (-) battery clamp as illustrated. The NEGATIVE will be marked with a MINUS (-) sign. There may also be a **BLACK** plastic protective cover over the negative battery post. The smart hub has built-in voltage protection to prevent car battery drain in case the lights are accidentally left on. The lights will automatically turn off and the smart hub will be on standby mode when the voltage drops to approximately 12V. Once on standby mode, if the car battery is producing below 12V, do not turn on the LED lights until your next engine start or when power is back to 12V or above. **WARNING:** Do not mix up the cables or allow the metal ends to touch together because this may damage the battery, charging system and/or electronics on the vehicle. When installing, please make sure your engine is not running.

APP INSTALLATION



Compatible with iPhone 4s & higher, iPad3, iPad Mini, iPad Air & higher, and iPod touch 5th Generation & higher. Requires iOS 7.0 or higher.

Compatible with phones with Android™ 4.3 or higher. Note: not all Android™ phones are equipped with Bluetooth™ v4.0 required for this application.

- Install Type S LED APP on your smart device. Search for the APP through the APP Store or Google Play by:

TYPE S LED

- Or scan above QR code to find the compatible APP for iOS or Android.
- Once installed, open the APP and begin enjoying your Plug & Glow™ experience.

USING THE APP

Home Page



Tap "SMART DOME/ MOTORCYCLE/ ENGINE BAY" icon to start. APP will automatically pair to the Hub when both are powered on (including Bluetooth) and within 30ft.

USING THE APP CONT...



A Master On/Off Switch

B LED Zone Functions:

Connect and control up to four separate zones.

On/Off: Press each zone icon to turn LED On or Off.

Move Zone Icon:

Press and hold zone icon, select "Move" to position each zone icon at your desired location.

Rename Zone Icon:

Press and hold zone icon, select "Rename" to rename each icon. (Note: Maximum 4 characters).

Select Multiple:

You can select multiple zones and control the same setting at once. Press and hold zone icon, select "Select Multiple" then select your desired zone by pressing "Confirm". To ungroup your selection, press and hold zone icon and select "Ungroup".

Select Vehicle Schematic:

Press>, select your desired vehicle schematic.

C Save Preset:

You can save your favorite settings. After creating your setting, press "Save Preset" and enter your preset name. You can save up to 10 preset settings.

Select Preset:

You can select your previously saved preset setting, press "Select Preset" and choose your saved setting.

Delete Saved Preset Setting:

To delete a saved preset setting, press "Select Preset" and press and hold the preset setting that you wish to delete. Press "Yes" to delete.

Select Color:

Choose from up to 49 different colors. Press "Select Color", select your desired color and press "Confirm".

D LED Mode:

Choose from 6 different modes

E Brightness:

Slide bar to adjust brightness setting

F Speed:

Slide bar to adjust the speed of the movement from each LED Mode.

WARNING

IMPORTANT SAFETY INSTRUCTIONS

1. SAVE THESE INSTRUCTIONS - This manual contains important safety and operating instructions for LED kit Model LM57485.
2. Before using this LED kit, read all instructions and cautionary markings .
3. Use of an attachment not recommended or sold by the battery LED kit manufacturer may result in a risk of fire, electric shock, or injury to persons.
4. Do not operate with damaged cord - replace it immediately.
5. Do not operate LED kit if it has received a sharp blow, been dropped, or otherwise damaged in any way; take it to a qualified serviceperson.
6. Do not disassemble LED kit; take it to a qualified serviceperson when service or repair is required. Incorrect reassembly may result in a risk of electric shock or fire.

Smart Exterior Trim Lighting Kit LM57485
Responsible Party:
Winplus North America Inc.
2975 Red Hill Ave., Ste. 100, Costa Mesa, CA 92626, USA
Tel: 1-866-294-9244

FCC / IC Compliance Statement:

This device complies with Part 15 of the FCC rules and Industry Canada. Operation is subject to the following two conditions:

- (1) This device may not cause harmful interference, and
- (2) this device must accept any interference received, including interference that may cause undesired operation.

Warning: Changes or modifications to this unit not expressly approved by the party responsible for compliance could void the user's authority to operate the equipment. The manufacturer is not responsible for any radio or TV interference caused by unauthorized modifications or change to this equipment. Such modifications or change could void the user's authority to operate the equipment.

NOTE: This equipment has been tested and found to comply with the limits for Class B digital device, pursuant to part 15 of the FCC Rules. These limits are designed to provide reasonable protection against harmful interference in a residential installation. This equipment generates, uses and can radiate radio frequency energy and, if not installed and used in accordance with the instructions, may cause harmful interference to radio or television reception, which can be determined by turning the equipment off and on, the user is encouraged to try to correct the interference by one or more of the following measures:

- Reorient or relocate the receiving antenna.
- Increase the separation between the equipment and the receiver.
- Connect the equipment into an outlet on a circuit different from that to which the receiver is connected.

• Consult the dealer or an experienced radio/TV technician for help.
The device has been evaluated to meet general RF exposure requirement.
To maintain compliance with FCC/IC's RF exposure guidelines, this equipment should be installed and operated with a minimum distance of 20cm between the radiator and your body.
CAN ICES-005 (B) / NMB-005 (B)

WARNING: This product can expose you to chemicals including DEHP and DINP, which are known to the State of California to cause cancer and birth defects or other reproductive harm. For more information go to www.P65Warnings.ca.gov.

Have a comment or question?
Email us at: info@typesauto.com or visit us online at: www.typesauto.com

Winplus North America, Inc.
2975 Red Hill Ave., Ste. 100,
Costa Mesa, CA 92626
Tel: 1.866.294.9244
© 2019 Winplus North America, Inc.
All rights reserved.
3M VHB™ is a trademark of 3M Company.

The Bluetooth® word mark and logos are registered trademarks owned by the Bluetooth SIG, Inc. and any use of such marks by Winplus Co. Ltd is under license. Other trademarks and trade names are those of their respective owners.

iPhone, iPad and iPod touch are trademarks of Apple Inc.

Android is a trademark of Google Inc.

OPTIONAL PRODUCTS

Optional Smart LED products also available to enhance your experience (sold separately).



48" Smart Lighting Deluxe Kit (LM55369)



72" Exterior Smart Lighting Kit (LM55878)