

TOURING ITEMS
TYPES[®]

Plug & Glow[™]

Automotive
Smart Multi-Color
Dome Light

PACKAGE CONTENTS



**Smart Multi-Color
Dome Light**



**Universal Dome
Light Adapters**

Instruction Manual

TECHNICAL SPECIFICATION

Working voltage: DC 12V Only

Bluetooth distance: No obstacle 30ft

Frequency band: 2.4GHZ

Types of LED: 5050 SMD RGB

Control up to: 4 Dome Lights

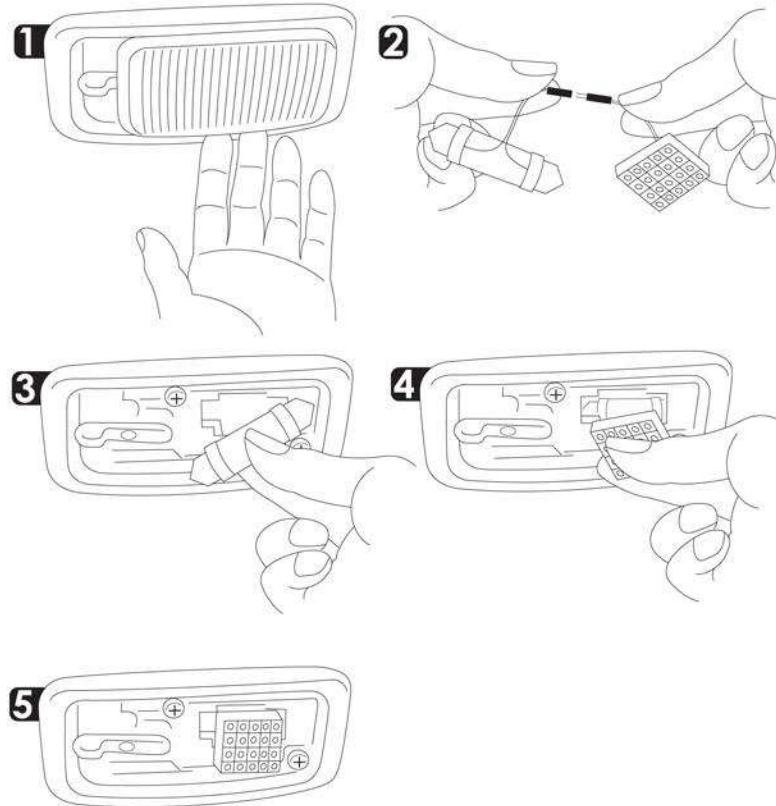
Fits the following bulb sizes:

560, 561, 578, 211-2, 212-2,
214-2, 6411, 6451, 6429,
6413, 6418, DE3423, 6461,
6423, DE3021, DE3022, DE3175,
921, 194, 168



Scan to learn more

INSTALLATION



1. Remove light cover
2. Select the appropriate replacement adapter
3. Attach LED light to the adapter and install adapter into light slot
4. Turn on light to confirm correct orientation; if light does not come on reverse adapter orientation.
5. Apply the adhesive to hold lights in place and replace cover.

APP INSTALLATION

Download on the
App Store



Scan to download APP

Compatible with iPhone 4s & higher, iPad3, iPad Mini, iPad Air & higher, and iPod touch 5th Generation & higher.
Requires iOS 7.0 or higher.

ANDROID APP ON
Google play



Scan to download APP

Compatible with phones with Android™ 4.3 or higher.

Note: not all Android™ phones are equipped with Bluetooth®
Smart v4.0 required for this application.

- Install Smart Lighting APP on your Smart phone. Scan above QR code to find the compatible APP for iOS or Android.
- Or you can search for the APP through the APP Store or Google Play by:



- Once installed, open the APP and begin enjoying your Plug & Glow™ experience.



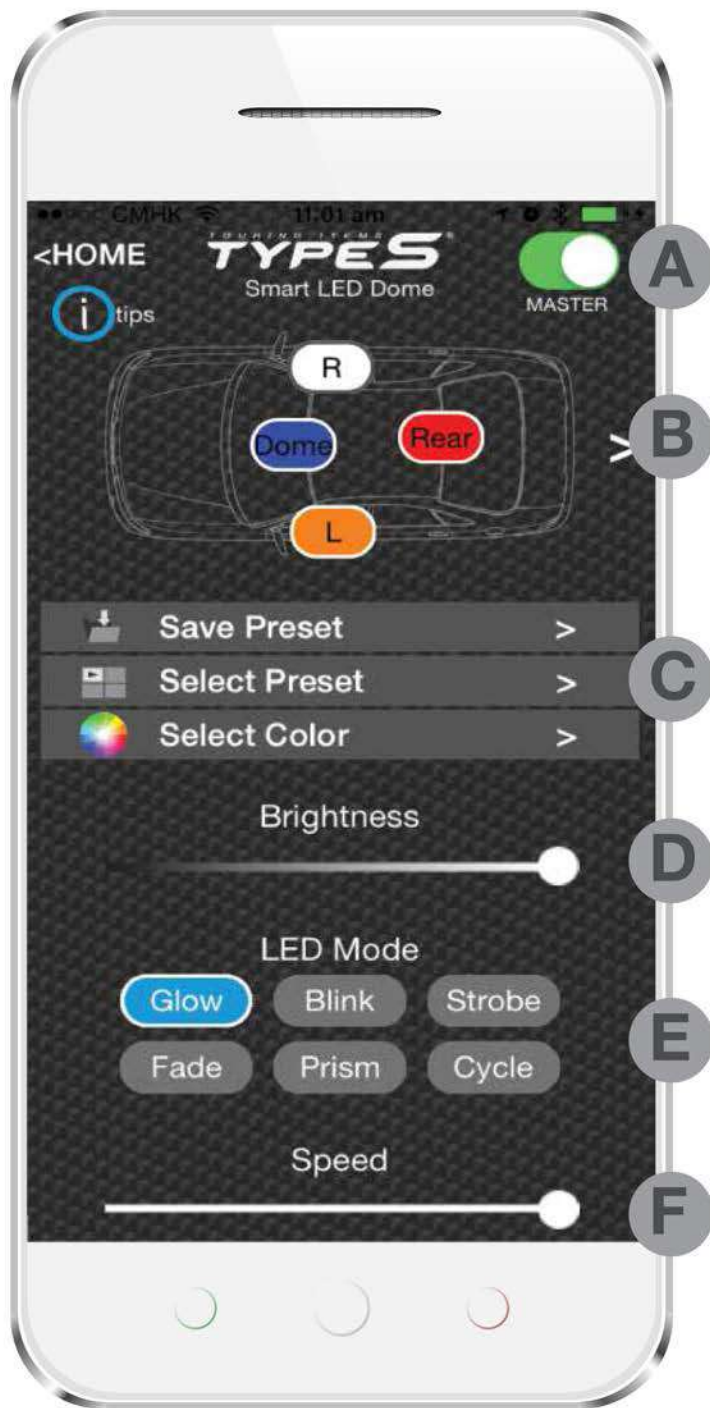
USING THE APP

Home Page



- Tap “Smart LED Dome” Icon to start
APP will automatically pair to the Dome Light when both are powered on (including Bluetooth) and within 30ft

USING THE APP Cont..



A Master On/Off Switch

B LED Zone Functions:

Connect and control up to four separate dome lights.

On/Off: Press each zone icon to turn LED On or Off.

Move Zone Icon:

Press and hold zone icon, select "Move" to position each zone icon at your desired location.

Rename Zone Icon:

Press and hold zone icon, select "Rename" to rename each icon. (Note: Maximum 4 characters).

Select Multiple:

You can select multiple zones and control the same setting at once. Press and hold zone icon, select "Select Multiple" then select your desired zone by pressing "Confirm". To ungroup your selection, press and hold zone icon and select "Ungroup".

Select Vehicle Schematic:

Press>, select your desired vehicle schematic.

C Save Preset:

You can save your favorite settings. After creating your setting, press **"Save Preset"** and enter your preset name. You can save up to 10 preset settings.

Select Preset:

You can select your previously saved preset setting, press **"Select Preset"** and choose your saved setting.

Delete Saved Preset Setting:

To delete a saved preset setting, press **"Select Preset"** and press and hold the preset setting that you wish to delete. Press **"Yes"** to delete.

Select Color:

Choose from up to 49 different colors. Press **"Select Color"**, select your desired color and press **"Confirm"**.

D Brightness:

Slide bar to adjust brightness setting

E LED Mode:

Choose from 6 different modes

F Speed:

Slide bar to adjust the speed of the movement from each LED Mode.

EXTENDABLE

Type S Plug & Glow™ Smart Multi-Color Dome Light can be extended up to **4 separate Dome Lights**.



WARNING

WARNINGS:

1. Do not install or use product if it, in any way, impairs the safe operation of your vehicle.
2. *NEVER use the APP while operating your vehicle. Use the APP when vehicle is stationary only.*
3. Follow manufacturer's instructions to ensure the product is properly & safely installed.
4. Check your state or provincial laws before installing. Vehicle owner must comply with all applicable laws.
5. This product is intended solely for decorative purposes. Manufacturer and Seller assume no liability for installation or use, which are solely the responsibility of the purchaser.
6. This product is not DOT approved and is designed and intended for interior uses only. Not for use in extreme temperature such as under hood applications.
7. The Manufacturer and Seller are not responsible or liable for consequential, incidental, or indirect damages, whether to person or property, resulting from the installation or improper use of this product.

PROP 65 WARNING: This product contains lead, a chemical known to the state of California to cause cancer, birth defects or other reproductive harm.

 Have a comment or question?
Email us at: info@winplususa.com
or visit us online at: www.winplususa.com

Winplus North America, Inc.
820 South Wanamaker Avenue, Ontario, CA 91761 USA
Tel: 866-294-9244

© 2015 Winplus North America, Inc.
All rights reserved.
3M™ is a trademark of 3M Company.

iPhone, iPad and iPod touch are trademarks of Apple Inc.
Android is a trademark of Google Inc.

FCC

This device complies with Part 15 of the FCC Rules. Operation is subject to the following two conditions: (1) This device may not cause harmful interference, and (2) This device must accept any interference received, including interference that may cause undesired operation.

The manufacturer is not responsible for any radio or TV interference caused by unauthorized modifications or change to this equipment. Such modifications or change could void the user's authority to operate the equipment.

IC

This radio transmitter (identify the device by certification number or model number if Category II) has been approved by Industry Canada to operate with the antenna types listed below with the maximum permissible gain indicated. Antenna types not included in this list, having a gain greater than the maximum gain indicated for that type, are strictly prohibited for use with this device.

Antenna Type	Max. Antenna Gain(dBi)
PCB printed antenna	0

CE

Hereby, Winplus North America Inc., declares that this Plug&Glow Smart LED is in compliance with the essential requirements and other relevant provisions of Directive 1999/5/EC.

Environment friendly disposal



You can help protect the environment!
Please remember to respect local regulations. Return any non-working electrical components to an appropriate waste disposal center.