

SCA

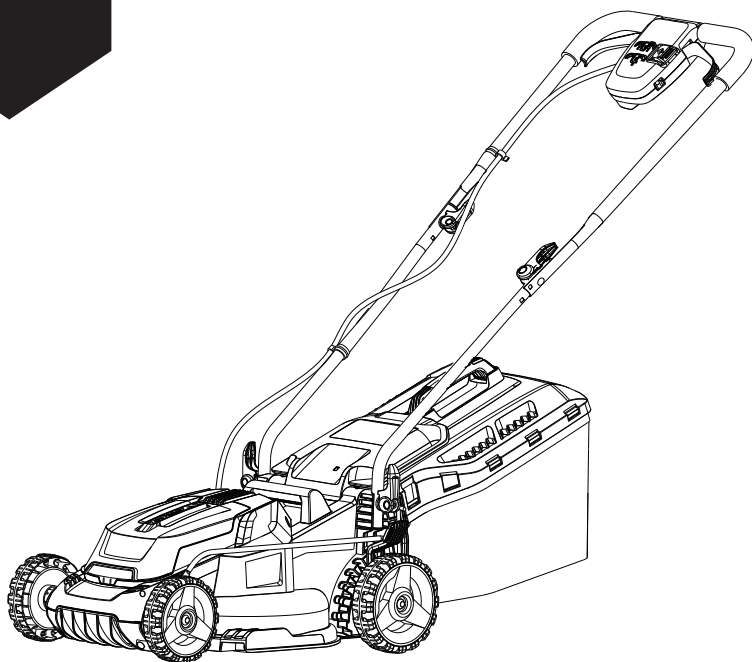
2X18V CORDLESS LAWN MOWER

Instruction Manual

CLM36LD

SCA

VALUE YOU CAN TRUST



After Sales Support

FREE CALL 1300 889 028

EMAIL:salesau@positecgroup.com

Important - Please read these instructions fully before operating or maintaining your Lawn Mower.

These instructions contain important information that will help you get the best from your Lawn Mower, ensuring it remains safe to operate.

If you need help or have damaged or missing parts, call the Customer Helpline on 1300 889 028

Contents

Safety Information.....	3
In The Box.....	8
Accessories.....	9
Assembly.....	9
Before Putting Into Operation.....	13
Operating Instructions.....	14
Maintenance.....	16
Troubleshooting.....	19
Technical Data.....	21
Warranty.....	22

Safety Information

Important - Please read these instructions fully before starting assembly

Warning Symbols



To reduce the risk of injury, user must read instruction manual



Read instruction handbook before operation this machine



Keep bystanders away



Beware of sharp blades.
Blades continue to rotate after the motor is switched off-
Remove disabling device before maintenance



Do not burn



Batteries may enter water cycle if disposed improperly, which can be hazardous for ecosystem. Do not dispose of waste batteries as unsorted municipal waste.



Li-Ion Li-Ion

Li-Ion battery. This product has been marked with a symbol relating to 'separate collection' for all battery packs and battery pack. It will then be recycled or dismantled in order to reduce the impact on the environment. Battery packs can be hazardous for the environment and for human health since they contain hazardous substances.



For indoor use only



Read the operator's manual



Fuse



Positive terminal



Negative terminal



Double insulation



RCM marking


ABN: Australian Business Number. By this number, business information such as entity type, status, business location etc. can be found at website <http://abr.business.gov.au>.
ABN of Positec Australia Pty Limited is 14 101 682 357

Safety Information

Important - Please read these instructions fully before starting assembly

General Power Tool Safety Warnings

PRODUCT SAFETY

 **WARNING! Read all safety warnings and all instructions.** *Failure to follow all instructions listed below may result in electric shock, fire and/or serious injury.*

Carefully read the instructions for the safe operation of the machine.

Save all warnings and instructions for future reference.

- This appliance is not intended for use by persons (including children) with reduced physical, sensory or mental capabilities, or lack of experience and knowledge, unless they have been given supervision or instruction concerning use of the appliance by a person responsible for their safety.
- Children should be supervised to ensure that they do not play with the appliance.
- The appliance is only to be used with the power supply unit provided with the appliance.

IMPORTANT

READ CAREFULLY BEFORE USE.

KEEP FOR FUTURE REFERENCE.

Safe operating practices for electrically powered lawn mowers

Training

- a) Read the instructions carefully. Be familiar with the controls and the proper use of the equipment.
- b) Never allow children or people unfamiliar with these instructions to use the lawnmower. Local regulations can restrict the age of the operator.
- c) Never mow while people, especially children, or pets are nearby.
- d) Keep in mind that the operator or user is responsible for accidents or hazards occurring to other people or their property.

Preparation

- a) While mowing, always wear substantial footwear and long trousers. Do not operate the equipment when barefoot or wearing open sandals.
- b) thoroughly inspect the area where the equipment is to be used and remove all objects which can be thrown by the machine.
- c) Before using, always visually inspect to see that the blades, blade bolts and cutter assembly are not worn or damaged. Replace worn or damaged blades and bolts in sets to preserve balance. Replace damaged and unreadable labels.
- d) On multi-bladed machines, take care as rotating one blade can cause other blades to rotate.

Operation

- a) Mow only in daylight or in good artificial light.
- b) Avoid operating the equipment in wet grass, where feasible.
- c) Always be sure of your footing on slopes.
- d) Walk, never run.
- e) For wheeled rotary machines, mow across the face of slopes, never up and down.

Safety Information

Important - Please read these instructions fully before starting assembly

General Power Tool Safety Warnings

- f) Exercise extreme caution when changing direction on slopes.
- g) Do not mow excessively steep slopes.
- h) Use extreme caution when reversing or pulling the lawn mower towards you.
- i) stop the blade(s) if the lawn mower has to be tilted for transportation when crossing surfaces other than grass, and when transporting the lawnmower to and from the area to be mowed.
- j) Never operate the lawn mower with defective guards, or without safety devices, for example deflectors and/or grass catchers, in place.
- k) Switch on the motor carefully according to instructions and with feet well away from the blade(s).
- l) Do not tilt the lawn mower when switching on the motor, except if the lawnmower has to be tilted for starting. In this case, do not tilt it more than absolutely necessary and lift only the part which is away from the operator. Always ensure that both hands are in the operating position before returning the lawn mower to the ground.
- m) Do not put hands or feet near or under rotating parts. Keep clear of the discharge opening at all times;
- n) Not to touch the blades before the disabling device has been removed and the blades have come to a complete stop.
- o) Do not start the lawn mower when standing in front of the discharge opening.
- p) Do not transport the lawn mower while the power source is running. Never pick up or carry the lawn mower while the motor is running.
- q) To remove the disabling device
 - whenever leaving the machine unattended;
 - before clearing a blockage;
 - before checking, cleaning or working on the machine;
 - after striking a foreign object, inspect the machine for damage and make repairs before restarting and operating the lawnmower.

If the lawn mower starts to vibrate abnormally (check immediately)

- inspect for damage;
- replace or repair any damaged parts;
- check and tighten any loose parts.

Maintenance and storage

- a) Keep all nuts, bolts and screws tight to be sure the equipment is in safe working condition;
- b) Check the grass catcher frequently for wear or deterioration;
- c) Replace worn or damaged parts for safety. Use only genuine replacement parts and accessories.
- d) Be careful during adjusting of the lawnmower to prevent entrapment of the fingers between moving blades and fixed parts of the lawnmower.
- e) Always allow the lawnmower to cool down before storing.
- f) When servicing the blades be aware that, even though the power source is switched off, the blades can still be moved.
- g) For rotary mowers, ensure that only replacement cutting means of the right type are used.

Safety Information

Important - Please read these instructions fully before starting assembly

General Power Tool Safety Warnings

SAFETY WARNINGS FOR BATTERY PACK


- a) Do not dismantle, open or shred cells or battery pack.
- b) Do not short-circuit a battery pack. Do not store battery packs haphazardly in a box or drawer where they may short-circuit each other or be short-circuited by conductive materials. *When battery pack is not in use, keep it away from other metal objects, like paper clips, coins, keys, nails, screws or other small metal objects, that can make a connection from one terminal to another. Shorting the battery terminals together may cause burns or a fire.*
- c) Do not expose battery pack to heat or fire. Avoid storage in direct sunlight.
- d) Do not subject battery pack to mechanical shock.
- e) In the event of battery leaking, do not allow the liquid to come into contact with the skin or eyes. If contact has been made, wash the affected area with copious amounts of water and seek medical advice.
- f) Seek medical advice immediately if a cell or battery pack has been swallowed.
- g) Keep battery pack clean and dry.
- h) Wipe the battery pack terminals with a clean dry cloth if they become dirty.
- i) Battery pack needs to be charged before use. Always refer to this instruction and use the correct charging procedure.
- j) Do not maintain battery pack on charge when not in use.
- k) After extended periods of storage, it may be necessary to charge and discharge the battery pack several times to obtain maximum performance.
- l) Recharge only with the charger specified by manufacturer. Do not use any charger other than that specifically provided for use with the equipment.
- m) Do not use any battery pack which is not designed for use with the equipment.
- n) Keep battery pack out of the reach of children.
- o) Retain the original product literature for future reference.
- p) Remove the battery from the equipment when not in use.
- q) Dispose of properly.
- r) Do not mix cells of different manufacture, capacity, size or type within a device.
- s) Do not remove battery pack from its original packaging until required for use.
- t) Observe the plus (+) and minus (-) marks on the battery and ensure correct use.

Safety Information

Important - Please read these instructions fully before starting assembly

General Power Tool Safety Warnings

GENERAL SAFETY WARNINGS

 **WARNING!** Read all safety warnings and all instructions. Failure to follow all instructions listed below may result in electric shock, fire and/or serious injury.

Save all warnings and instructions for future reference.

- This appliance is not intended for use by persons (including children) with reduced physical, sensory or mental capabilities, or lack of experience and knowledge, unless they have been given supervision or instruction concerning use of the appliance by a person responsible for their safety.
- Children should be supervised to ensure that they do not play with the appliance. If the supply cord is damaged, it must be replaced by the manufacturer, its service agent or similarly qualified persons in order to avoid a hazard.

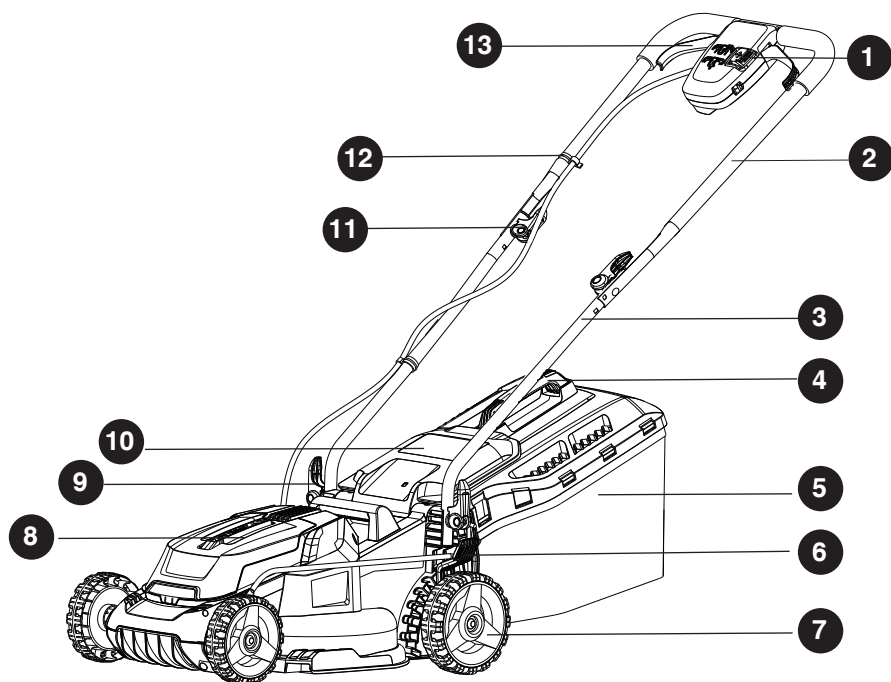
Additional safety instructions for your battery charger

1. Before charging, read the instructions.
2. For charge Li-ion battery pack only.
3. Do not charge a leaking battery.
4. Do not use chargers for works other than those for which they are designed.
5. Before charging, ensure your charger is matching the local AC supply.
6. The charging device must be protected from moisture.
7. Do not use the charging device outdoors.
8. Do not short out the contacts of battery or charger.
9. Respect the polarity "+/-" when charging.
10. Do not open the unit and keep it out of the reach of children.
11. Do not charge the batteries of other manufactures or ill-suited models.
12. Ensure that the connection between the battery charger and battery is correctly positioned and is not obstructed by foreign bodies.
13. Keep battery charger's slots free of foreign objects and protect against dirt and humidity. Store in a dry and frost-free place.
14. When charging batteries, ensure that the battery charger is in a well-ventilated area and away from inflammable materials. Batteries can get hot during charging. Do not overcharge any batteries. Ensure that batteries and chargers are not left unsupervised during charging.
15. Do not recharge non-rechargeable batteries, as they can overheat and break.
16. Longer life and better performance can be obtained if the battery pack is charged when the air temperature is between 18°C and 24°C. Do not charge the battery pack in air temperatures below 0°C, or above 40°C. This is important as it can prevent serious damage to the battery pack.
17. Charge only battery pack of the same model provided by manufacturer and of models recommended by manufacturer.

In The Box

Parts

- | | |
|--|---------------------------------|
| 1 Safety key | 9 Lower handle locking lever |
| 2 Upper handle | 10 Safety flap |
| 3 Lower handle | 11 Upper handle locking lever |
| 4 Grip handle for grass collection bag | 12 Cable clip |
| 5 Grass collection bag | 13 Switch lever |
| 6 Cutting height adjusting lever | 14 Battery pack (See Fig. D) |
| 7 Wheel | 15 Battery charger (See Fig. D) |
| 8 Battery housing cover | 16 Blade (See Fig. K2) |



Accessories

Grass collection bag	1
Battery pack	2
Charger	1

Assembly



NOTE: Before using the tool, read the instruction book carefully.

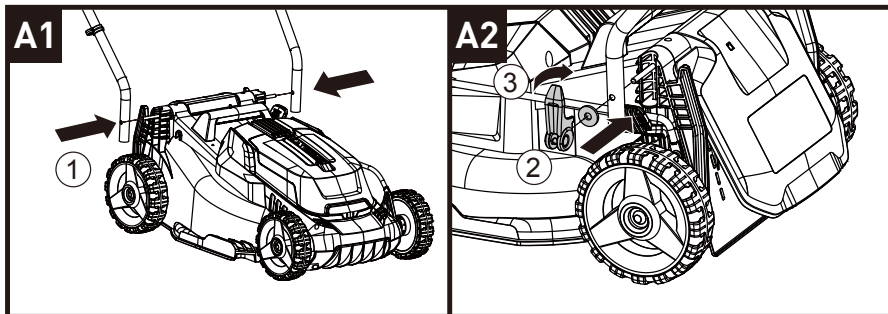
ASSEMBLY



WARNING! Before you assemble the lawn mower, check the accessories according above information, make sure the accessories are completed.

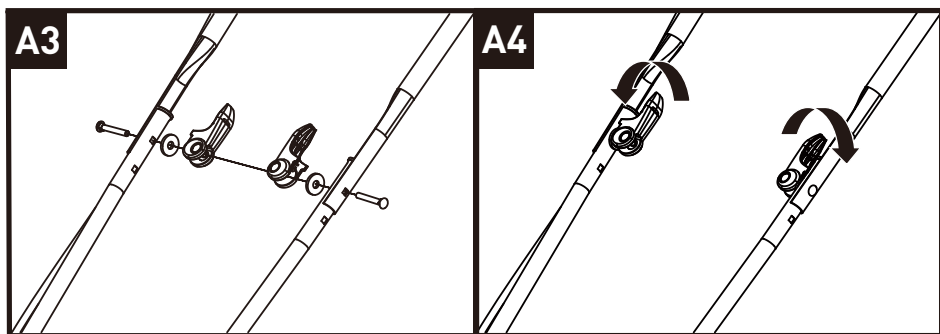
1. FITTING THE HANDLE

- 1) Insert the lower handle into the slot on the deck. (See Fig. A1)
- 2) Insert the lower handle locking lever with its washer into the hole on the lower handle. Be sure to carefully align the holes found on the lower handles and the deck. (See Fig. A2).
- 3) Tighten the lower handle locking lever by pressing the lever onto the lower handle as shown in Fig. A2.



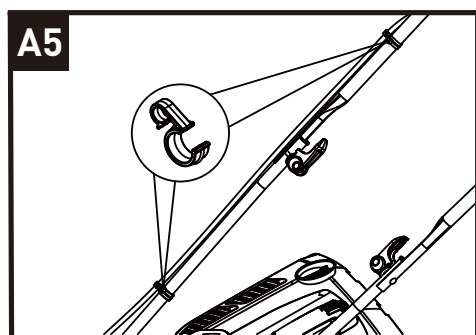
- 4) Repeat the same steps to the other side of the lower handle. Now the lower handle is locked in place.
- 5) Attach the lower handle to the upper handle. Then insert the upper handle locking lever and the washer through the hole from inside of the lower handle. Insert the locking bolt through the hole from outside of the lower handle. (See Fig. A3)
- 6) Tighten the upper handle locking lever by pressing the lever onto the lower handle as shown in Fig. A4.

Assembly



- 7) Repeat the same steps to the other side of the upper handle. Check that the handles are FULLY secured.
- 8) Attach the cable clips provided to the upper and lower handle. Insert the cable into the clips to fasten the cable to the handle, ensuring there is enough cable slack. (See Fig. A5)

NOTE: Make sure the cable is routed underneath the lower handle.



Assembly

2. GRASS COLLECTION BAG ASSEMBLY


Connect the grass box handle to the box top as shown in Fig. B1-B4.

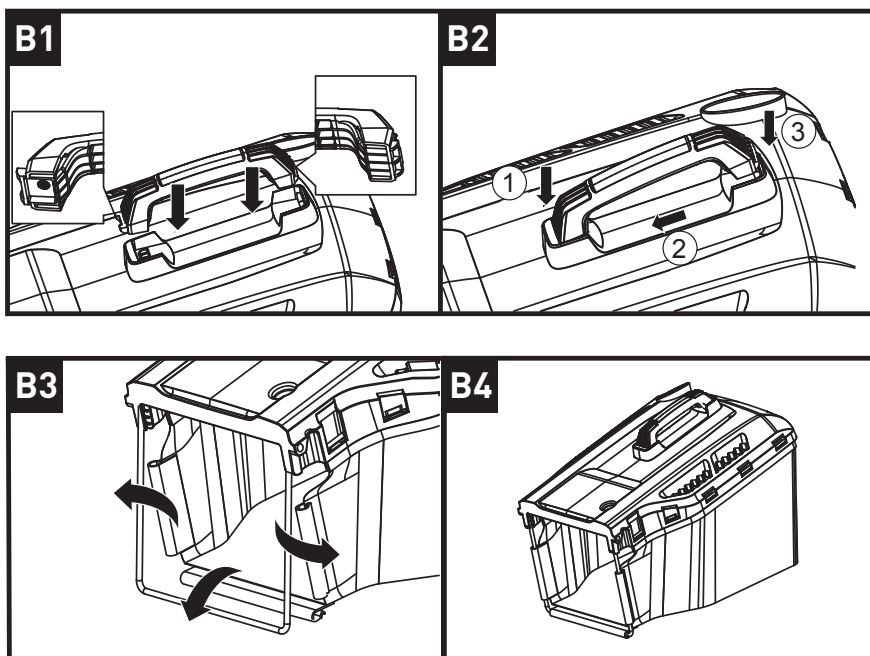
1) Align the front and back parts of the handle with the front and rear slots on the grass collection box. (See Fig. B1)

2) Press the front of the handle briefly. Then push it forward. Push down the back of the handle. (See Fig. B2)

3) Clip the plastic clips over the metal frame. (See Fig. B3)

NOTE: Depress the grass collection bag slightly to ensure that it is completely installed.

 **WARNING:** Don't fit the handle in reversed direction. Fit the handle as shown in Fig. B1.



3. GRASS COLLECTION BAG FITTING

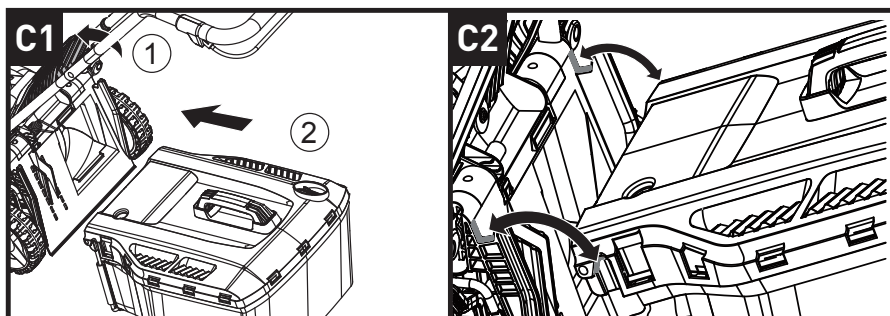
1) Turn the mower off, wait until blade stops.

2) Open the safety flap. Pick up the grass collection bag by the handle, and position grass collection bag on the upper hooks on the mower. (See Fig. C1, C2)

3) Release the safety flap. Ensure the grass collection bag is installed securely.

NOTE: Depress the grass collection bag slightly to ensure that it is completely installed.

Assembly



4. REMOVING/EMPTYING THE GRASS COLLECTION BAG

Hold the grass collection bag, lift the safety flap and hold up. Remove grass collection bag.



WARNING: Always check the safety flap can close the discharge outlet tightly before using. Never lift the safety flap when the lawn mower is being used without fitted grass collection bag.

Before Putting Into Operation

1. CHARGING THE BATTERY PACK CHARGER (SEE FIG. D)

NOTE:

- Do not use any charger other than that specifically provided for use with the equipment.
- If the battery pack is very hot you must remove your battery pack from the charger and allow time for the battery to cool down before recharging.
- The battery in your new tool is not charged when it leaves the plant. Therefore it must be full charged before using the first time.
- Please charge the battery to reach full or no less than half charge before storage. If the tool will not be used for long periods of time, charge the battery every 3-6 months.

CHARGING PROCEDURE

- Plug the charger into an appropriate outlet. The light will be green.
- Slide the battery packs into the charger, the light will turn to red to indicate the charging process has started.
- When charging is completed, the light will turn to green. The battery packs are now fully charged, unplug the charger and remove the battery packs.



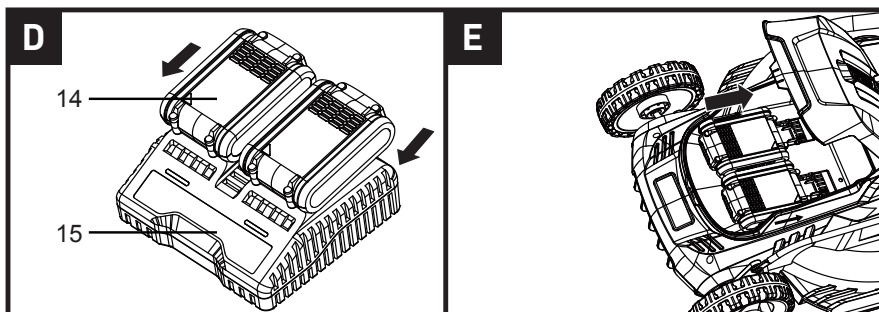
WARNING: When battery charger runs out after continuous use or exposure to direct sunlight or heat, allow time for the battery to cool down before re-charging to achieve the full charge.

CHARGING INDICATOR

Light	Status
Red on ●	Charging
Green on ●	Fully Charged

2. REMOVING OR INSTALL THE BATTERY PACKS (SEE FIG. E)

Depress the battery release button to release battery packs from your tool. After recharging, insert the battery packs into tool's battery ports. A simple push and slight pressure will be sufficient.



Operation Instruction

1. STARTING/STOPPING (SEE FIG. F1, F2)

STARTING

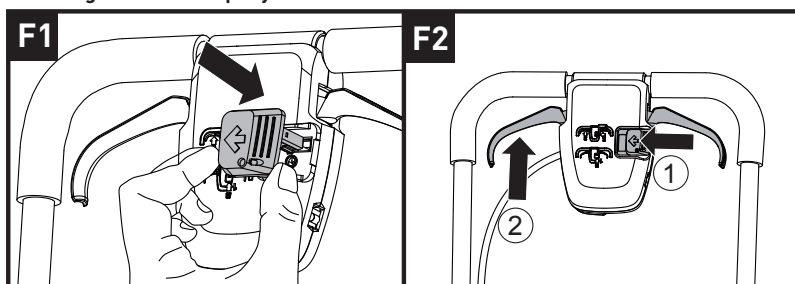
- 1) Insert the safety key into the motor switch on the handle.
- 2) Push the key inwards and hold it in position. Pull the switch lever towards the handle and the mower will start.
- 3) Release the safety key while holding the switch lever.

NOTE: The switch lever do not engage. Hold them tight against the handle bar during the entire working period.

STOPPING

- 1) Release the switch lever.
- 2) Wait for the mower to come to a standstill.
- 3) Remove the safety key.

⚠ WARNING: The blade continues to rotate for a few seconds after the machine is switched off. Allow the motor/blade to stop rotating before switching "on" again. Do not rapidly switch off and on.

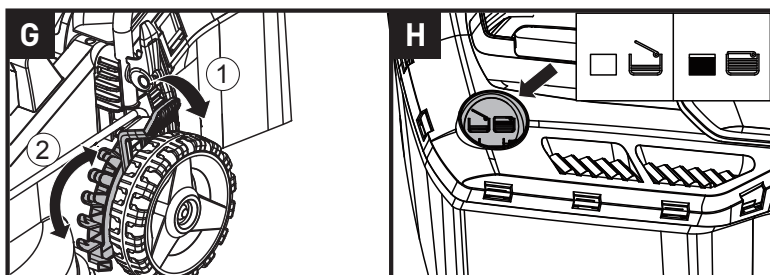


2. ADJUSTING THE CUTTING HEIGHT (SEE FIG. G)

⚠ WARNING: Stop, release switch lever and wait until the motor stops before adjusting height. The blades continue to rotate after the machine is switched off, a rotating blade can cause injury.

⚠ CAUTION: Do not touch rotating blades.

For the first cutting of the season, a high cutting adjustment should be selected. The lawn mower can be set to 6 cutting heights between 25mm and 75mm. For this purpose, move the cutting height adjustment lever outwards first, and then move forwards or backwards to choose a desired position.



Operation Instruction

3. GRASS BAG FILLING INDICATOR (SEE FIG. H)

To remind you immediately to empty when the grass collection bag is full, the mower provides an indicator on the top of bag to show the collection status. And you can follow as shown in the figure.

Empty status: flap floats



Fully status: flap falls down



4. MOWING TIPS

NOTE: ALWAYS INSPECT AREA WHERE MOWER IS TO BE USED AND REMOVE ALL STONES, STICKS, WIRE, METAL AND OTHER DEBRIS WHICH MIGHT BE THROWN BY THE ROTATING BLADE.

- 1) It is recommended to mow your lawn more frequently, walk at normal pace, and not to start/stop the mower too often during operation.
- 2) For best performance, please ensure use a fully charged battery pack and always cut off 1/3 or less of the grass height.
- 3) Walk slowly when cutting long grass, so as to have more effective cutting and properly discharge the clippings.
- 4) Avoid cutting wet grass, otherwise it will stick to the underside of the deck and the clippings cannot be collected or discharged properly.
- 5) A higher cutting height shall be applied to new or thick grass and it will extend the battery duration.
- 6) Mow across the face of slopes, never up-and-down. Exercise extreme caution when changing direction on slopes. Do not mow excessively steep slopes. Always maintain good footing.
- 7) Release switch lever to turn mower "OFF" when crossing any graveled area (stones can be thrown by the blade).
- 8) Set mower at highest cutting height when mowing in rough ground or in tall weeds. Removing too much grass at one time can cause circuit breaker to trip, which stops mower.
- 9) If a grass bag is used during the fast growing season, the grass may tend to clog up at the discharge opening. Release switch lever to turn mower "OFF". Remove the grass bag and shake the grass down to the back end of the bag. Also clean out any grass or debris which may be packed around the discharge opening. Replace the grass collection bag.
- 10) If mower should start to vibrate abnormally, release switch lever to turn mower "OFF". Check immediately for cause. Vibration is a warning of trouble. Do not operate mower until a service check has been made.
- 11) ALWAYS RELEASE SWITCH LEVER TO TURN MOWER "OFF" WHEN LEAVING IT UNATTENDED EVEN FOR A SHORT PERIOD OF TIME.

Maintenance



WARNING: Stop the mower before removing the grass bag.

NOTE: To ensure long and reliable service, perform the following maintenance procedures regularly. Check for obvious defects such as a loose, dislodged or a damaged blade, loose fittings, and worn or damaged components. Check that the covers and guards are all undamaged and are correctly attached to mower. Carry out any necessary maintenance or repairs before operating mower. If the mower should happen to fail despite regular maintenance, please call our customer helpline for advice.

BLADE SHARPENING

KEEP BLADE SHARP FOR BEST MOWER PERFORMANCE.

WEAR PROPER EYE PROTECTION WHILE REMOVING, SHARPENING, AND INSTALLING BLADE. ENSURE THAT THE MOWER IS TURNED OFF.

Sharpening the blade twice during a mowing season is usually sufficient under normal circumstances. Sand causes the blade to dull quickly. If your lawn has sandy soil, more frequent sharpening may be required.

REPLACE BENT OR DAMAGED BLADE IMMEDIATELY.

WHEN SHARPENING THE BLADE

1. Make sure blade remains balanced.
2. Sharpen blade at the original cutting angle.
3. Sharpen cutting edges on both ends of blade, removing equal amounts of material from both ends.

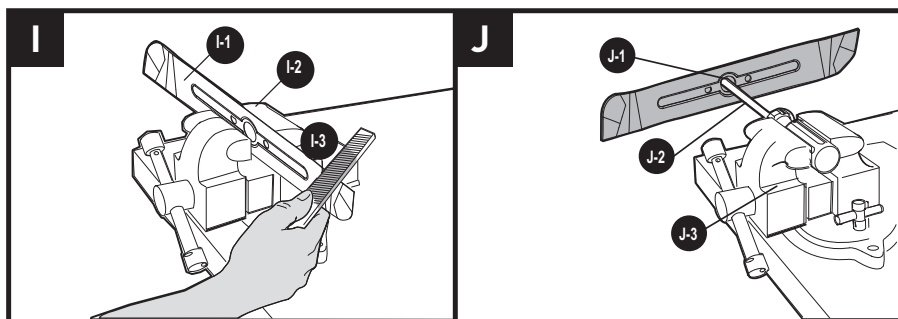
TO SHARPEN BLADE IN A VISE (SEE Fig. I)

1. Be sure the switch lever is released, the blade has stopped and the safety key removed before removing the blade.
2. Remove blade from mower. See instructions for removing and attaching blade.
3. Secure blade I-1 in a vise I-2.
4. Wear safety glasses and be careful not to cut yourself.
5. Carefully file the cutting edges of the blade with a fine tooth file I-3 or sharpening stone.
6. Check balance of blade. See instructions for blade balancing.
7. Replace blade on mower and tighten securely. Refer to instructions below.

BLADE BALANCING (SEE Fig. J)

Check balance of blade by placing center hole in blade J-1 over a nail or screwdriver shank J-2, clamped horizontally in a vise J-3. If either end of the blade rotates downward, file that end. Blade is properly balanced when neither end drops.

Maintenance

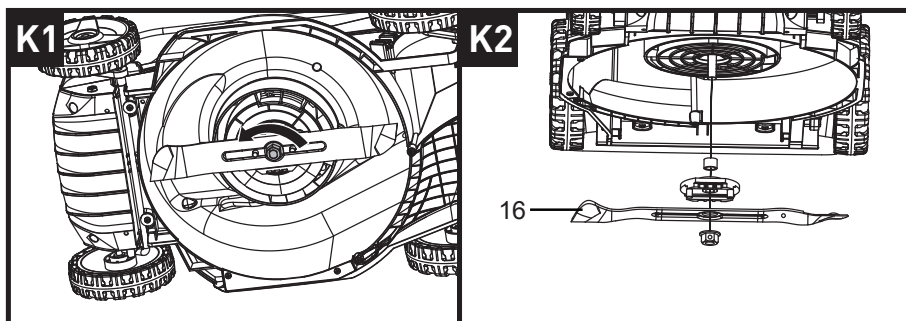


BLADE MAINTENANCE (See Fig. K1, K2)

Renew your metal blade after 50 hours mowing or 2 years, whichever is the sooner—regardless of condition.

Follow these procedures to remove and replace the blade. You will need garden gloves (not provided) and a spanner wrench (not provided) to remove the blade. Hold the blade and unscrew the blade bolt counter-clockwise using a spanner wrench, and then remove blade.

To re-assemble, position the blade with the cutting edges towards the ground. Then securely tighten the blade bolt.



Maintenance

STORAGE (SEE FIG. L1, L2)

⚠ WARNING: If the appliance is accessible to children and unauthorized persons during storage, this can result in injury. Store the appliance out of the reach of children and unauthorised persons.

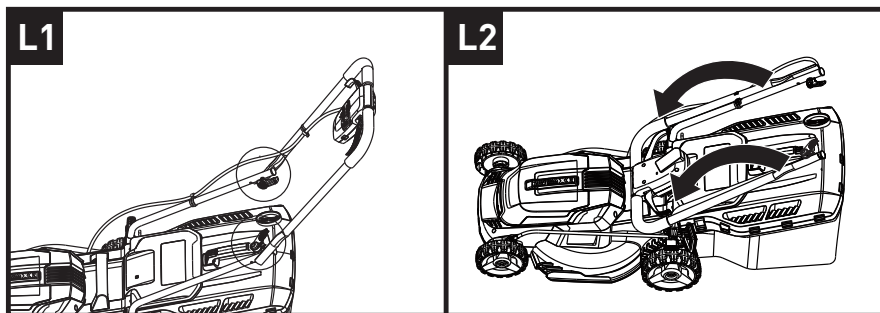
⚠ CAUTION: Store the battery packs in cool and dry conditions, but not exposed to naked flames or heat sources.

1. Switch off the appliance: remove the safety key.
2. Pull out the rechargeable batteries.
3. Allow the engine to cool down.
4. Thoroughly clean the appliance.
5. Rub a thin coat of oil or silicon onto all metal parts for corrosion protection.
6. Loosen the upper handle locking lever and fold the handle bar as shown in Fig. L1, L2.
7. Store the appliance in a dry, clean location protected from frost. Cover with a breathable tarpaulin to protect against dust. Do not use plastic film in order to avoid the accumulation of moisture.

FOR BATTERY TOOLS

The ambient temperature range for tool and battery use and storage is 0°C to 45°C.

The recommended ambient temperature range for the charging system during charging is 0°C to 40°C.



Troubleshooting

The following table gives checks and actions that you can perform if your machine does not operate correctly. If these do not identify/remedy the problem, contact your service agent.



WARNING: Switch off and remove the battery packs before investigating fault.




Symptom	Remedy
1. Mower doesn't run when switch lever is activated.	<p>A. Check to make sure safety key has been installed and is fully seated and that button on switch housing is being completely pushed.</p> <p>B. Release Switch Lever to turn mower off. Remove safety key, turn mower over and check that blade is free to turn. If not free, return to an authorized servicer. Blade should turn freely.</p> <p>C. Have battery packs been fully charged? Plug in charger and wait for green light to come on.</p>
2. Motor stops while mowing.	<p>A. Release Switch Lever to turn mower off. Remove safety key, turn mower over and check that blade is free to turn. If not free, return to an authorized servicer. Blade should turn freely.</p> <p>B. Raise cutting height of wheels to highest position and start mower.</p> <p>C. Have battery packs been fully charged? Plug in charger and wait for green light to come on.</p> <p>D. Avoid overloading the mower. Slow down the cutting pace by pushing mower slower or raise the cut height. Or both.</p>
3. Mower runs but cutting performance is unsatisfactory, or does not cut entire lawn.	<p>A. Have battery packs been fully charged? Plug in charger and wait for green light to come on.</p> <p>B. Release Switch Lever to turn mower off. Remove safety key. Turn mower over and check: Blade for sharpness - Keep blade sharp. Deck and discharge chute for clogging.</p> <p>C. Wheel height adjustment may be set too low for grass condition. Raise cutting height.</p>
4. Mower is too hard to push.	<p>A. Raise cutting height to reduce deck drag on grass. Check each wheel for free rotation.</p>
5. Mower is abnormally noisy and vibrates.	<p>A. Release Switch Lever to turn mower off. Remove safety key. Turn mower on side and check blade to ensure it has not been bent or damaged. If blade is damaged, replace with a replacement blade. If the underside of the deck is damaged return mower to an Authorized service center.</p> <p>B. If there is no visible damage to the blade and the mower still vibrates: Release Switch Lever to turn mower off, remove safety key and remove blade. Rotate blade 180 degrees and retighten. If mower still vibrates, return the mower to an authorized service center.</p>

Troubleshooting

Symptom	Remedy
6. Battery charger LED's not on.	A. Check plug connection. B. Replace charger.
7. Battery charger LED does not flip to green.	A. Battery needs to be diagnosed. Take to authorized service center.
8. Mower not picking up clippings with the Grass Collection Bag.	A. Chute clogged. Release Switch Lever to turn mower off. Remove safety key. Clear chute of grass clippings. B. Too much cut grass. Raise cutting height of wheels to shorten length of the cut. C. Bag full. Empty bag more often.
9. When mulching there are clippings visible.	A. Too much cut grass. Raise cutting height of wheels to shorten length of the cut. Do not cut off more than 1/3 of total length. B. Check blade for sharpness. Always keep blade sharp.
10. Low or diminished run-time after many uses	A. Return to Authorized Service location - may need new battery packs.
11. The battery charger LED flashes red and the battery packs can't be charged.	A. The battery packs overheat after continuous use. Remove battery packs from the charger and allow them to cool to 42°C or less.

Technical Data

Technical Data Table

Voltage	2*18V 	
No load speed	4200 /min	
Cutting diameter	340mm	
Front wheel diameter	140mm	
Rear wheel diameter	160mm	
Cutting height	25-75mm	
Cutting height positions	6 positions	
Grass collection capacity	30L	
Machine weight	11 kg (including battery)	
Protection class	 /II	
Charger input (ACG1820D2)	100-240V-50/60Hz, 50W	
Charger output (ACG1820D2)	20V  , 2.0A	
Battery capacity (ABP1820HD)	2.0 Ah Li-ion	
Charging time	2.0 Ah (1pc)	1 hr
	2.0 Ah (2pcs)	2 hrs

Warranty

Our product is guaranteed to be free from quality and manufacturing defects for a period of 12 months.

If your product becomes defective during this period, SRGS PTY LTD will offer you either a replacement, credit or refund where a product is faulty; wrongly described; different from the sample shown to you or do not do what they are supposed to do.

This warranty will not cover substantially modified product; misuse or abuse of the product contrary to user instructions or packaging label; change of mind and normal wear and tear.

Our goods come with guarantees that cannot be excluded under the Australian Consumer Law. You are entitled to a replacement or refund for a major failure and for compensation for any other reasonably foreseeable loss or damage. You are also entitled to have the goods repaired or replaced if the goods fail to be of acceptable quality and failure does not amount to a major failure.

To claim the warranty, take the product to the front Service Desk of your nearest store of purchase. You will need to show receipt or other proof of purchase. Additional information may be required to process your claim. Should you not be able to provide proof of purchase with a receipt or bank statement, identification showing name, address and signature may be required to process your claim.

Any expenses relating to the return of your product to the store will normally have to be paid by you. For online store purchases, SRGS PTY LTD will pay for the return freight for any product assessed as having a major failure.

The benefits to the customer given by this warranty are in addition to other rights and remedies of the Australian Consumer Law in relation to the goods or services to which this warranty relates.

This warranty is provided by SRGS PTY LTD, 6 Coulthards Avenue, Strathpine QLD 4500, Australia. Phone: 1300 175 010.

