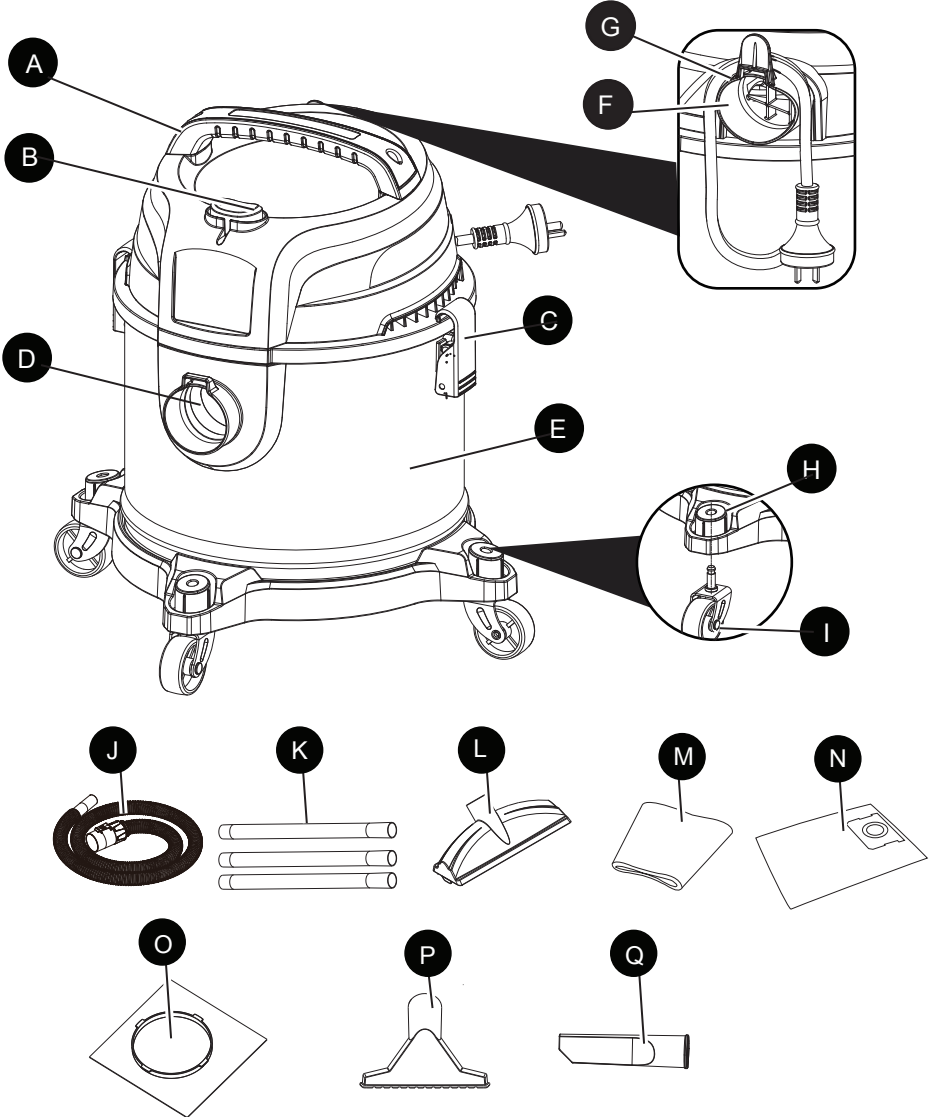


# BLACK+ DECKER

TM



**BDX19301-4B**

EN

---

## PACKAGE CONTENTS

PART	DESCRIPTION	QTY
A	Handle (To be assembled before use)	1
B	Switch	1
C	Latch	2
D	Vacuum port	1
E	Dust tank	1
F	Blowing port	1
G	Power cord wrap	1
H	Accessory holder	1
I	Caster (To be assembled before use)	4

PART	DESCRIPTION	PART NUMBERS	QTY
J	Hose	BDVA13-3304	1
K	Extension wand	BDVA25-1205	3
L	Floor nozzle	BDVA13-1570	1
M	Foam filter	BDVA20-1200A	1
N	Disposable filter bag	BDVA25-1238N	1
O	Reusable filter	BDVA20-1100N	1
P	Gulper nozzle	BDVA13-1588	1
Q	Crevice nozzle	BDVA13-1508	1

**To order replacement bag, filters or parts contact;**



Customer Service

**AUS 1300 660 457**

**NZ 0800 474 876**

**email: [service.group@smga.com.au](mailto:service.group@smga.com.au)**

---

## INTRODUCTION

Dear Customer,

Thank you for purchasing this wet/dry vacuum which has passed through our extensive quality assurance processes. Every care has been taken to ensure that it reaches you in perfect condition. However, in the unlikely event that you should experience a problem, or if you require any assistance please do not hesitate to contact us;

---

**PRODUCT SPECIFICATIONS**

---

Model	BDX19301-4B
Voltage / Frequency / Wattage	240V / 50Hz / 850W
Motor	By-Pass, Single Stage
Tank Capacity	15 Litre
Hose	32mmx1.5m
Power cord	H05VV-F, 2C x 0.75mm <sup>2</sup> / 1.83m. Length

**⚠ WARNING:**

Use only extension cords that are rated for outdoor use. Extension cords in poor condition or that are too small in wire size can pose fire and shock hazards.

To reduce the risk of these hazards when using an extension cord, be sure it is in good condition and that the connection does not come into contact with liquid. To keep power loss to a minimum, use the following table to choose the minimum wire size extension cord.

Extension Cord Length	TYPE
0 - 15 m	Heavy Duty 3 x 1mm <sup>2</sup>
15 - 30 m	Extra Heavy Duty 3 x 1.5mm <sup>2</sup>

**⚠ If you have a problem, call customer service do not return this wet/dry vacuum to the place of purchase.**

**For any queries or assistance call**



Customer Service

**AUS 1300 660 457**  
**NZ 0800 474 876**

Hours of operation:  
Monday to Friday  
8.00am - 5.00pm AEST

**Do not return to place of purchase.**

Keep your purchase receipt, this will be required to make any claims under the 12 month warranty.

**Please take note of serial number and write here for ease of reference:**

**Serial Number:** \_\_\_\_\_

**Date of Purchase:** \_\_\_\_\_

**Place of Purchase:** \_\_\_\_\_

**Receipt Number:** \_\_\_\_\_

---

## **EXPRESS WARRANTY STATEMENT WET/DRY VACUUM**

You are not required to do anything to register your wet/dry vacuum purchase. Please attach the purchase receipt to this manual and ensure both are kept safe. We hope you enjoy your new wet/dry vacuum, and if you have any problems call customer service on the above phone numbers. Do not return to place of purchase.

Smart Marketing Group Pty Ltd (SMG) warrants that this wet/dry vacuum will be free from manufacturing faults or defects for 12 months from the date of purchase, providing original purchase receipt is kept and shown when needed and is subject to the terms and conditions below.

If a warranty fault appears within the warranty period, SMG reserves the right to replace or repair the product. In the event that SMG chooses to replace the product, this original warranty will expire at the original date. If the product includes various accessories or components, only the defective accessory or component will be replaced or repaired. SMG reserves the right to replace defective parts of the product with parts and components of similar quality, grade and composition where an identical part or component is not available. Products presented for repair may be replaced by refurbished products of the same type rather than being repaired. Refurbished parts may be used to repair the products.

### **WHAT IS COVERED**

- Manufacturing fault or defect.

### **HOW TO CLAIM UNDER THIS WARRANTY**

- Call customer service.
- Ensure you have the following: Original purchase receipt, Model of wet/dry vacuum, Serial number of wet/dry vacuum.
- Discuss the issue.
- Customer service will advise which authorised service agent to take the wet/dry vacuum to provided the issue is a warranty one.
- Take wet/dry vacuum to authorised service agent for repair.

### **WHAT IS NOT COVERED**

- Use of wet/dry vacuum for hire.
- Commercial use of wet/dry vacuum.
- Use of wet/dry vacuum in a commercial application.
- Damage or deterioration due to transport.
- Damage caused by negligence, misuse, abuse or accident or incorrect voltage and wattage.
- Any corrosion or rusting.
- Damage caused by incorrect set up and start up.
- Replacement parts due to general wear and tear.
- Wet/dry vacuum with serial number defacement, modification or removal.
- Wet/dry vacuum which have been serviced by other than an authorised SMG service agent.
- Wet/dry vacuum with no original purchase receipt.
- Wet/dry vacuum which have been on sold, not original purchaser.
- Damage due to non-servicing of wet/dry vacuum as is required by this manual.
- Blockages / damage caused by dust, dirt, spiders webs or insects.
- Damage caused by the incorrect fitting of accessories.
- Damage caused by overloading, overworking the wet/dry vacuum.
- Damage to attached equipment or third party accessories.
- Damage caused by attached equipment or third party accessories.

### **CONTACT DETAILS**

Smart Marketing Group Pty Ltd  
33-35 Lionel Road, Mt. Waverley,  
Victoria 3149, Australia.  
AUS 1300 660 457  
NZ 0800 474 876  
service.group@smga.com.au

---

## **COMPLETE WARRANTY STATEMENT - WET/DRY VACUUM**

As soon as you have purchased the wet/dry vacuum, we recommend that you check to make sure it is intact and that you read the operating instructions carefully before using it. The purchase receipt for this product is to be retained and must be presented if making a claim under the terms of the Smart Marketing Group (SMG) warranty. Bank account statements are not acceptable for proof of purchase.

This warranty does not cover wet/dry vacuum intended for hire or use in commercial applications or in commercial premises. The warranty will under no circumstances extend to reimbursement or payment of damages, whether direct, indirect or consequential.

The warranty is void if there is evidence the wet/dry vacuum has been modified or tampered with in any way or used with unauthorised accessories without our consent.

SMG declines any responsibility or liability whatsoever arising from misuse or abuse, negligent handling of the wet/dry vacuum or if the product has not been installed or failure to comply with the relevant safety, operating, setting and maintenance instructions (see further in this manual). The warranty does not extend to installation or disconnection costs.

Any item sent freight forward/collect for repair will be refused. Warranty repairs are free of charge, provided the product is delivered to our service department or authorised service agent. The wet/dry vacuum will need to be returned, adequately protected in a box. SMG will not be responsible for any in-transit loss or damage. Assistance under the warranty will only be made available if the request is made to our customer service team on the contact numbers listed below and proof of purchase is provided.

This is a repair only warranty you will need to take the wet/dry vacuum to the authorised service agent after contacting our customer service centre.

If the product includes various accessories or components, only the defective accessory or component will be replaced or repaired.

SMG reserves the right to replace defective parts of the product with parts and components of similar quality, grade and composition where an identical part or component is not available.

Products presented for repair may be replaced by refurbished products of the same type rather than being repaired. Refurbished parts may be used to repair the products.

Damage caused by third party accessories is not covered under this warranty. Damage caused to attached equipment or third party accessories will not be covered under this warranty. Rust and corrosion are not covered under this warranty.

If a warranty fault is found the freight cost will be credited to the owner. If no fault is found the product will be returned and any costs associated with the service will be charged to the owner. Blockages caused by spider webs, insects, dirt, accumulated dust, incorrect voltage and wattage are not covered by this warranty.

SMG reserves the right to replace or repair the product within the warranty period. Parts found to be defective due to a manufacturing fault will be replaced free of charge.

In the event of SMG choosing to replace the product, the warranty will expire at the original date of purchase. If no warranty fault is found the owner will be advised and the product will be returned and any costs associated with the service will be charged to the owner.

Our goods come with guarantees that cannot be excluded under the Australian Consumer Law. You are entitled to a replacement or refund for a major failure and for compensation for any other reasonably foreseeable loss or damage. You are also entitled to have the goods repaired or replaced if the goods fail to be of acceptable quality and the failure does not amount to a major failure. The benefits of this warranty are in addition to any rights and remedies imposed by Australian State and Federal legislation that cannot be excluded.

In New Zealand, this SMG warranty is in addition to the conditions and guarantees which are mandatory as implied by the New Zealand Consumer Guarantee Act 1993. For service, spare parts or product information please contact customer service:

Australia: 1300 660 457

New Zealand: 0800 474 876

---

## **SAFETY INFORMATION**

### **IMPORTANT SAFETY INSTRUCTIONS & GROUNDING INSTRUCTIONS**

When using an electrical appliance, basic precautions should be always followed, including the following: **READ ALL INSTRUCTIONS BEFORE USING THIS APPLIANCE.**

#### **▲ATTENTION!**

Read all safety rules carefully before attempting to operate. Retain for future reference.

#### **▲DANGER!**

Never operate this unit when flammable materials or vapors are present because electrical devices produce arcs or sparks that can cause a fire or explosion.

#### **NEVER LEAVE OPERATING VACUUM UNATTENDED!**

#### **▲WARNING!**

#### **To reduce the risk of fire, electric shock, or injury:**


1. This vacuum is not intended for use by persons (including children) with reduced sensory or mental capabilities, or lack of experience and knowledge, unless they have been given supervision or instruction concerning the use of the appliance by a person responsible for their safety.
2. Do not leave appliance when plugged in. Unplug from outlet when not in use and before servicing. Connect to a properly grounded earth outlet only.
3. Do not expose to rain. Store indoors.
4. Always disconnect the plug from the wall outlet before removing the tank cover.
5. Do not allow to be used as a toy. Close attention is necessary when used by or near children.
6. Do not use with damaged cord or plug. If appliance is not working as it should, has been dropped, damaged, left outdoors or dropped into water, contact service center for assistance.
7. Do not pull or carry by cord, use cord as a handle, close a door on cord or pull cord around sharp edges or corners. Do not run appliance over cord. Keep cord away from heated surfaces.
8. Do not unplug by pulling on cord. To unplug, grasp the plug, not the cord.
9. Do not handle plug or appliance with wet hands.
10. Do not put any object into openings. Do not use with any openings blocked; keep the openings free of dust, lint, hair and anything that may reduce airflow.
11. Keep hair, loose clothing, fingers and all parts of body away from openings and moving parts.
12. Do not pick up anything that is burning or smoking, such as cigarettes, matches or hot ashes.
13. Do not use without dust bag and/or filters in place.
14. Turn off all controls before unplugging.
15. Use extra care when cleaning on stairs.
16. Do not use to pick up flammable or combustible liquids such as gasoline or use in areas where they may be present.
17. Do not use your cleaner as a sprayer of flammable liquids such as oil-based paint, lacquers, etc.
18. Do not vacuum toxic, carcinogenic, combustible or other hazardous materials such as asbestos, arsenic, barium, beryllium, lead, pesticides or other health endangering materials.
19. To reduce the risk of injury from accidental starting, always shut off vacuum and disconnect the power plug from the wall outlet before installing any part or cleaning accessory.

20. Do not pick up soot, cement, plaster or drywall dust without filter and dust bag in place. These are very fine particles that may affect the performance of the motor or be exhausted back into the air. Additional dust bags are available.
21. Do not leave the cord lying on the floor once you have finished the cleaning job. It can become a tripping hazard.
22. Use special care when emptying heavily loaded tanks.
23. To avoid spontaneous combustion, empty tank after each use.
24. The operation of a utility vacuum can result in foreign objects being blown into eyes, which can result in eye damage. Always wear safety goggles when operating vacuum.
25. This appliance is provided with double insulation. Use only identical replacement parts. See instructions for servicing double insulated appliances.
26. Unplug before connecting the hose, nozzles, filters, or other accessories.

**NOTE:** Use only as described in this manual. Use only manufacturer's recommended attachments.

**▲WARNING!**

**SERVICING OF DOUBLE-INSULATED WET/DRY VAC**

In a double-insulated Wet/Dry Vac, two systems of insulation are provided instead of grounding. No grounding means is provided on a double-insulated appliance, nor should a means for grounding be added. Servicing a double-insulated Wet/Dry Vac requires extreme care and knowledge of the system and should be done only by qualified service personnel. Replacement parts for a double-insulated Wet/Dry Vac must be identical to the parts they replace. Your double-insulated Wet/Dry Vac is marked with the words "DOUBLE INSULATED" and the symbol  (square within a square) may also be marked on the appliance. To reduce the risk of injury from electrical shock, unplug power cord before servicing the electrical parts of the Wet/Dry Vac.

**IMPORTANT!**

If the supply cord is damaged, it must be replaced by the manufacturer or its service agent or a similarly qualified person in order to avoid a hazard.



**IMPORTANT!**

Remove the plug from the socket before performing maintenance. Before using the machine make sure that the frequency and voltage shown on the rating plate correspond with the mains voltage. Specifications and details are subject to change without prior notice. The accessories shown in the pictures may vary from model to model.

**IMPORTANT SAFEGUARDS**

The symbol on the product or packaging indicates that the product must not be treated as domestic refuse. Instead, it should be handed in to a collection point for the recycling of electrical and electronic components. By ensuring the product is treated in the correct manner, you will help prevent any negative impact on the environment and health that might arise were the product to be discarded as ordinary refuse. For further information about recycling, you should contact your local authorities, refuse collection service or the sales outlet where you bought the goods.

To reduce the risk of injury from electrical shock:

1. This appliance has a polarized plug (one blade is wider than the other). This plug will fit in a polarized outlet only one way. If the plug does not fit fully in the outlet, reverse the plug. If it still does not fit, contact a qualified electrician to install the proper outlet. Do not change the plug in any way.
2. Unplug power cord before servicing the electrical parts of the Wet/Dry Vac.  

**IMPORTANT!**

If the supply cord is damaged, it must be replaced by the manufacturer or its service agent or a similarly qualified person in order to avoid a hazard.

**IMPORTANT!**

Remove the plug from the socket before performing maintenance. Before using the machine make sure that the frequency and voltage shown on the rating plate correspond with the mains voltage. Specifications and details are subject to change without prior notice. The accessories shown in the pictures may vary from model to model.

## ASSEMBLY

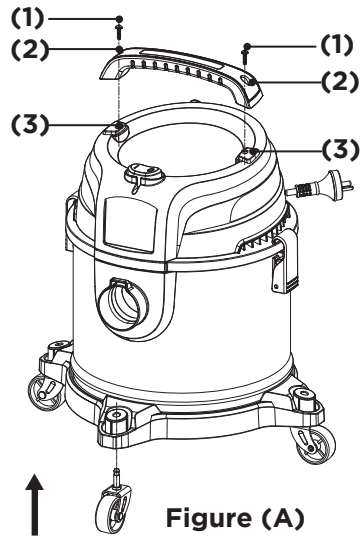
### INSTALLING HANDLE

To install handle

1. Place handle in recess (3)
2. Insert provided screws (1)
3. Use Phillips screwdriver to secure and tighten.

### INSTALLING CASTERS

Use provided casters and insert into the bottom of caster dolly as shown in Figure (A). Strong pressure required and listen for the click to ensure locked in place.



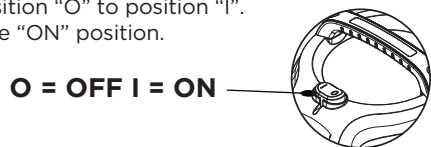
## OPERATING INSTRUCTIONS

### ▲WARNING!

To reduce the risk of fire or explosion, do not operate this vacuum in areas with flammable gases, vapors or explosive dust in the air. Flammable gases or vapors include but are not limited to: lighter fluid, solvent-type cleaners, oil-based paints, gasoline, alcohol or aerosol sprays. Explosive dusts include but are not limited to: coal, magnesium, aluminum, and grain or gun powder. Do not vacuum explosive dust, flammable or combustible liquids or hot ashes. Do not use this vacuum as a sprayer for any flammable or combustible liquid. To reduce the risk of health hazards from vapors or dusts, do not vacuum toxic materials.

### ▲CAUTION:

To reduce risk of hearing damage, wear ear protectors when using the vacuum for extended hours or when using it in a noisy area. This 15 Litre wet/dry vacuum is assembled at the factory and ready for use when you remove it from the carton. The unit is ready for dry vacuuming or blowing. After you plug the power cord into the wall receptacle, turn the unit "ON" by pushing the switch from position "O" to position "I". The "O" is the "OFF" position and the "I" is the "ON" position.



## DRY PICK-UP

1. The foam filter and reusable dry filter may be used to pick up dust and dry material; you must install both to ensure proper filtration. If the vacuum has been used to pick up liquids, the foam filter must be cleaned and dried before installing for dry pick up.



The filter must always be in correct position to reduce the risk of leaks and possible damage to vac. Make sure that the filter is completely covering the filter cage and that the clamp ring is as close to the lid as possible. Make sure there are no gaps between the filter and the lid (See illustration). It is very important to assemble the filter to the cage without allowing any possible leaks or tears. Any leaks will allow the picked up debris to be blown out of the blowing port and back into the surrounding environment.

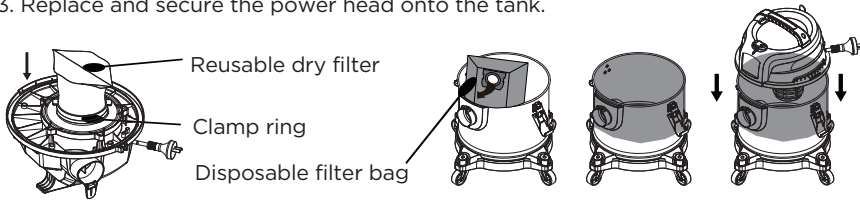
2. When using your vacuum to pick up very fine dust, it will be necessary to empty the dust tank and clean or replace the filter at more frequent intervals to maintain peak vacuum performance.

### ▲ NOTE

A dry filter is necessary to pick up dry material. If you use your vacuum to pick up dust when the filter is wet, the filter will clog quickly and be very difficult to clean. If the filter gets wet, replace it before continuing to do dry pickups.

### INSTALLING DISPOSABLE FILTER BAG

1. Slide the cardboard collar opening firmly onto the vacuum port deflector until it stops against the deflector wall.
2. Position the bag so that it is distributed around the inside of the tank.
3. Replace and secure the power head onto the tank.

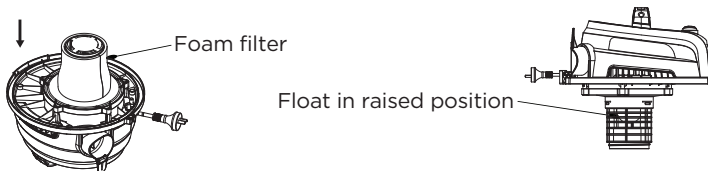


### WET PICK-UP

1. Remove disposable filter bag and reusable dry filter and replace it with foam filter when you do wet pickups (See illustration).
2. This wet/dry vacuum is equipped with a float mechanism which will rise automatically to cut off the airflow when the liquid in the tank reaches a predetermined level. When this happens, turn off vacuum, unplug the power cord, and empty the dust tank. You will know that the float has shut the airflow off because the suction ceases and the motor noise becomes higher in pitch due to increased motor speed. The liquid capacity may vary with the rate of pickup.

### ▲ IMPORTANT

1. To reduce the risk of damage to the vacuum, do not run motor with float in raised position.
2. Wet pick up accessories should be washed periodically.

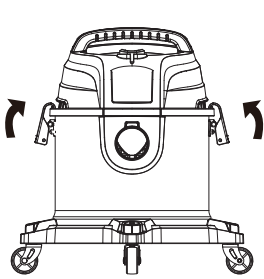


---

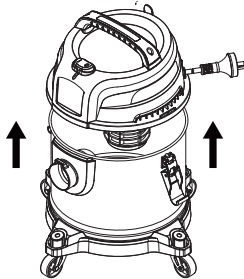
## EMPTY THE TANK

### ▲WARNING!

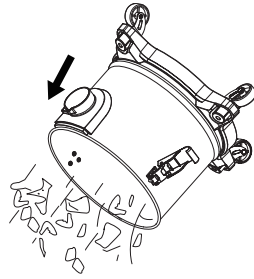
To reduce the risk of injury from accidental starting, unplug power cord before emptying the dust tank.



step 1



step 2



step 3

## BLOWING OPERATION

### ▲WARNING!

Always wear safety eyewear complying with ANSI Z87.1 (or in Canada CSA Z94.3) when using as a blower.

### ▲WARNING!

To avoid injury to bystanders, keep them clear of blowing debris.

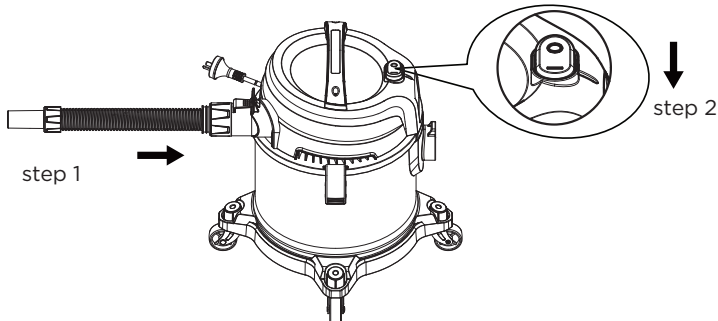
### ▲CAUTION

Wear a dust mask if blowing creates dust which might be inhaled.

### ▲CAUTION

To reduce the risk of hearing damage, wear ear protection when using the vac/blower for extended hours or in confined space.

Your vacuum contains a blowing feature. Follow the steps below to use your vacuum as a blower.



---

## CARE AND MAINTENANCE

### FILTER REPLACEMENT

#### ▲WARNING!

To reduce the risk of injury from accidental starting, unplug power cord before changing or cleaning filter. Your filter should be cleaned often to maintain peak vacuum performance.

#### ▲IMPORTANT

To avoid damage to the blower wheel and motor, always reinstall the reusable dry filter before using the vacuum for dry pickups and always reinstall the foam filter before using the vacuum for wet pickups.

#### ▲IMPORTANT

After cleaning, check the filter for tears or small holes. Do not use a filter with holes or tears in it. Even a small hole can cause dust to come out of your vacuum. Replace it immediately.

#### ▲NOTE

Before installing the filter on the vacuum, clean the area of the lid so that the clamp ring will seal the bag against the lid and stop small particles from bypassing the filter bag. If the filter is clean and not damaged, replace it on the filter cage. If it cannot be reused, place a new filter over the filter cage.

#### ▲NOTE

Clean the filter in an open area.

#### ▲WARNING!

Do not remove filter cage and float. The float prevents water from entering the impeller and damaging the motor. The cage prevents fingers from touching the moving impeller.

### CLEANING

To keep your wet/dry vacuum looking its best, clean the outside with a cloth dampened with warm water and mild soap.

To clean the tank:

1. Dump out debris.
2. Wash tank thoroughly with warm water and mild soap.
3. Wipe out with dry cloth.

### STORAGE

Before storing your vacuum, the dust tank should be emptied and cleaned. The cord should be wrapped and hung on the unit and the accessories should be kept in the accessory holder so they can be readily available. The vacuum should be stored indoors.

---

## TROUBLESHOOTING

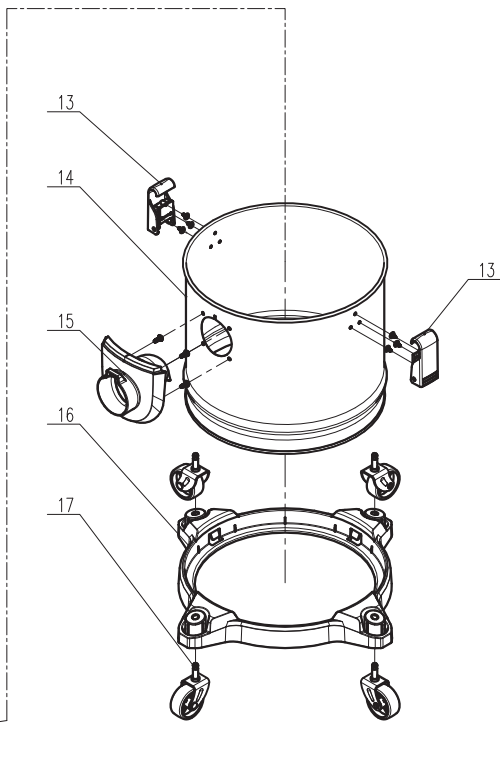
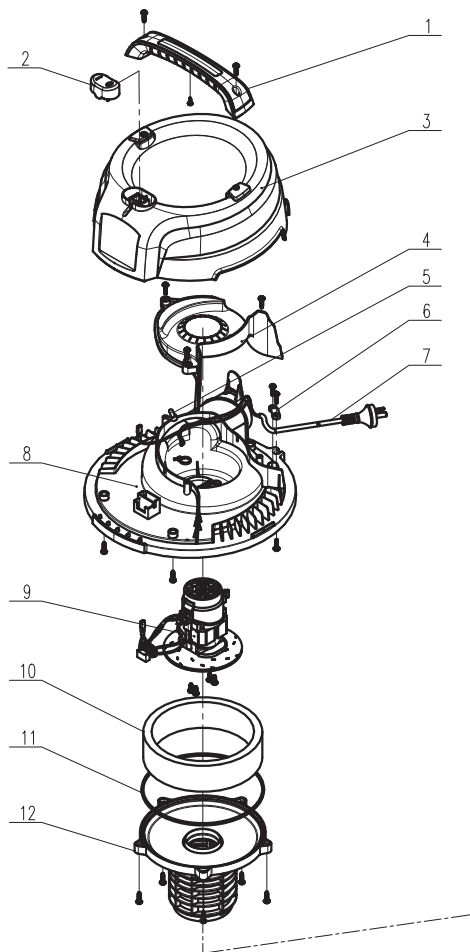
### ▲WARNING!

**TO REDUCE THE RISK OF INJURY FROM MOVING PARTS AND/OR ELECTRICAL SHOCK, TURN SWITCH OFF AND DISCONNECT GROUNDED PLUG FROM ELECTRICAL OUTLET BEFORE PERFORMING TROUBLESHOOTING CHECKS.**

Minor problems often can be fixed without calling customer service.

PROBLEM	POSSIBLE CAUSE	CORRECTIVE ACTION
Vacuum cannot run	No electricity	Make sure electrical outlet has voltage (A qualified electrician may need to be contacted)
Loss of suction, wet pick-up	Full tank	Drain and clean tank
Loss of suction, dry pick-up	Full tank	Drain and clean tank

## EXPANDED VIEW / PARTS LIST



PART	DESCRIPTION	QTY
1	Handle	1
2	Switch	1
3	Top cover	1
4	Baffle	1
5	Crimp cap	1
6	Cord clamp	1
7	Power cord	1
8	Lid	1
9	Motor	1

PART	DESCRIPTION	QTY
10	Silencer sponge	1
11	Tray sealing strip	1
12	Filter cage	1
13	Latch	2
14	Dust tank	1
15	Vacuum port	1
16	Caster dolly	1
17	Caster	4

Do not return to place of purchase.  
Smart Marketing Group Pty Ltd  
CUSTOMER SERVICE  
Australia: 1300 660 457  
New Zealand: 0800 474 876  
Operating times: Monday - Friday 8.00am - 5.00 pm  
Australian Eastern Standard Time (AEST)  
33-35 Lionel Road, Mt. Waverley  
Victoria 3149, Australia.



©2020 Manufactured under license for Black & Decker Corporation by Alton Industry Ltd Group.  
Made in China. Product in this box may differ slightly from that pictured.  
BLACK+DECKER and the BLACK+DECKER logos and product names are trademarks of  
The Black & Decker Corporation, used under license. All rights reserved.