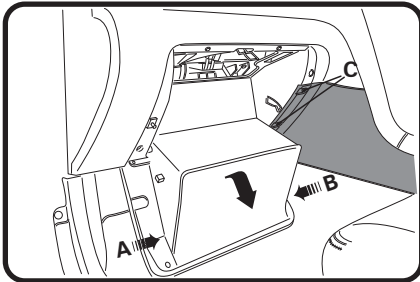


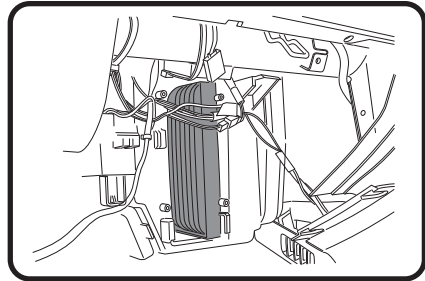
FITTING INSTRUCTIONS FOR RYCO CABIN FILTER RCA104M

SUBARU OUTBACK

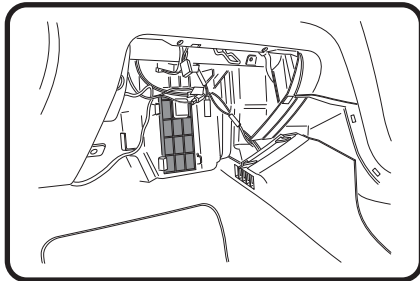
Filter located behind the glove box



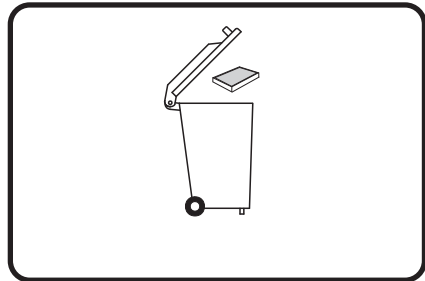
1: Open glove box, push each side of glove box (A & B) to release catches, glove box can then be rolled down to 180° position. Unclip trim panel (push / pull clips) (C) to reveal hidden screw.



3: Hold wires away from front of housing, Pull used filter out from housing and replace with new RycO RCA104M filter and re-assemble all previously removed components.



2: Remove 5 screws & 2 hex head bolts from around glove box frame, gently pull glove box out until plug for glove box light is visible and disconnect. Remove glove box to expose cover for cabin filter. Remove cover to gain access to filter by pulling out.



4: Dispose of used filter correctly.

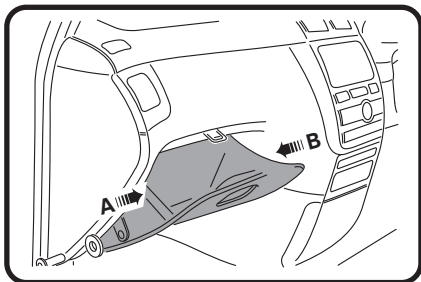
RYCO Group Pty Ltd
29 Taras Ave Altona
North Victoria 3025
Australia
www.rycofilters.com.au

RYCO Group- A division of
GUD (NZ) Holdings Limited.
19 Bell Avenue, Otahuhu,
Auckland 1060, New Zealand
www.ryco.co.nz

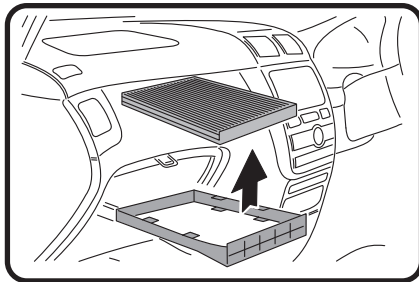
FITTING INSTRUCTIONS FOR RYCO CABIN FILTER RCA104M

TOYOTA AVENTIS VERSO

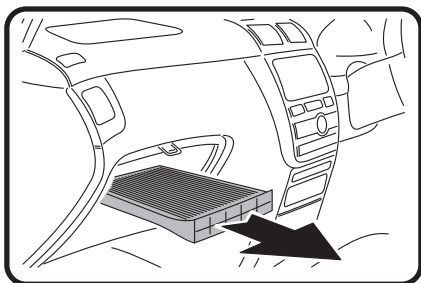
Filter located in glove compartment



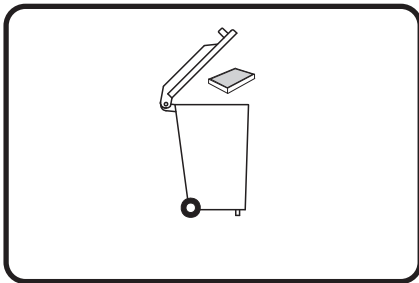
1: Push sides of glove box (A & B) to release catches, roll glove box down, unclip hinges to remove glove box.



3: Remove used filter from tray. Fit new Ryco filter. Refit all previously removed components.



2: Slide filter tray out from glove box compartment.



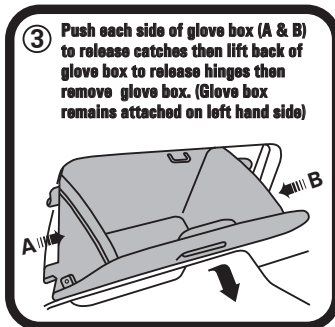
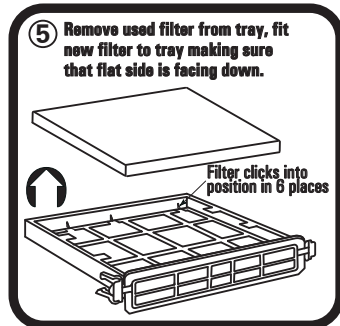
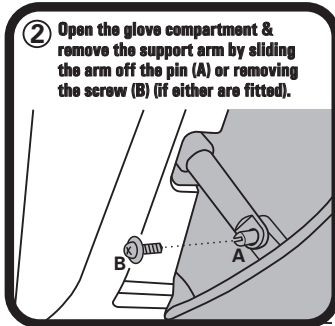
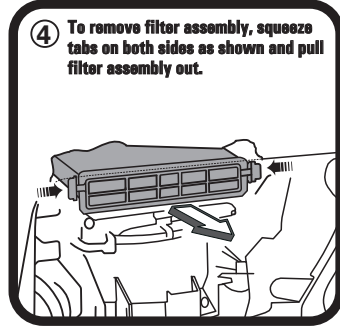
4: Clean filter housing, dispose of used filter correctly.



FITTING INSTRUCTIONS FOR RYCO CABIN FILTER RCA104M

TOYOTA CELICA

Filter is located behind glove box



RYCO Group Pty Ltd
29 Taras Ave Altona
North Victoria 3025
Australia
www.rycofilters.com.au

RYCO Group- A division of
GUD (NZ) Holdings Limited.
19 Bell Avenue, Otahuhu,
Auckland 1060, New Zealand
www.ryco.co.nz

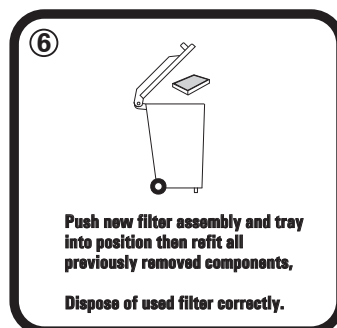
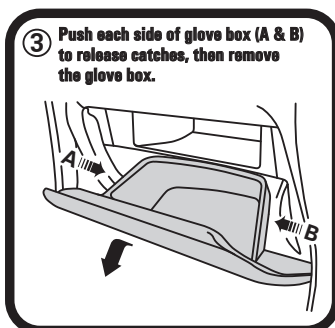
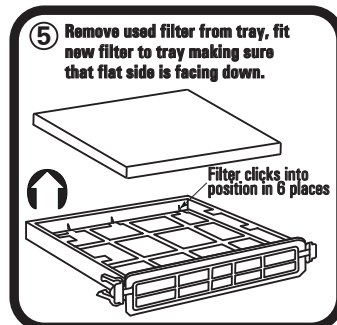
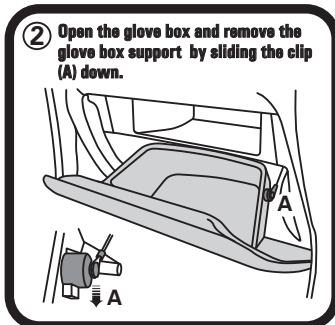
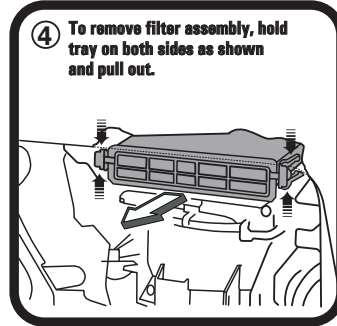
RYCO FILTERS



FITTING INSTRUCTIONS FOR RYCO CABIN FILTER RCA104M

TOYOTA LANDCRUISER PRADO

Filter is located behind glove box



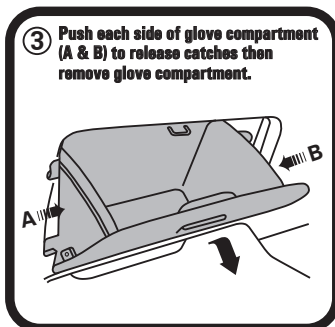
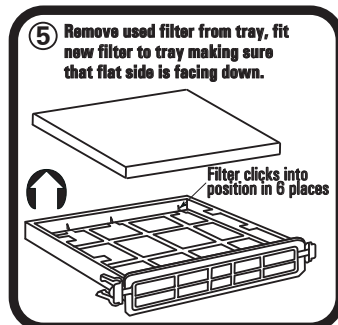
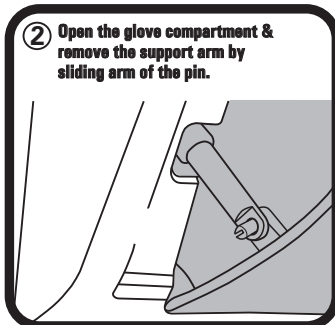
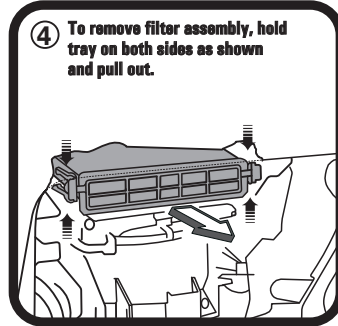
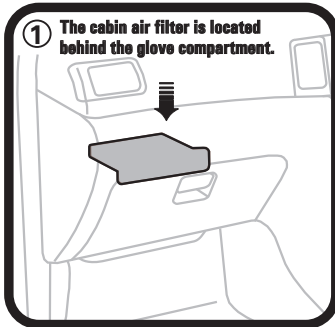
RYCO Group Pty Ltd
29 Taras Ave Altona
North Victoria 3025
Australia
www.rycofilters.com.au

RYCO Group- A division of
GUD (NZ) Holdings Limited.
19 Bell Avenue, Otahuhu,
Auckland 1060, New Zealand
www.ryco.co.nz

FITTING INSTRUCTIONS FOR RYCO CABIN FILTER RCA104M

TOYOTA PRIUS

Filter is located behind glove box



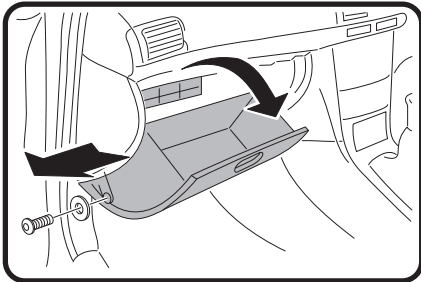
RYCO Group Pty Ltd
29 Taras Ave Altona
North Victoria 3025
Australia
www.rycofilters.com.au

RYCO Group - A division of
GUD (NZ) Holdings Limited. 19
Bell Avenue, Otahuhu,
Auckland 1060, New Zealand
www.ryco.co.nz

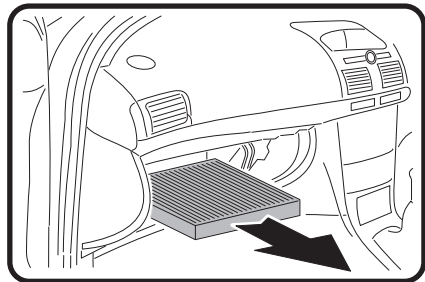
FITTING INSTRUCTIONS FOR RYCO CABIN FILTER RCA104M

TOYOTA AVENSIS

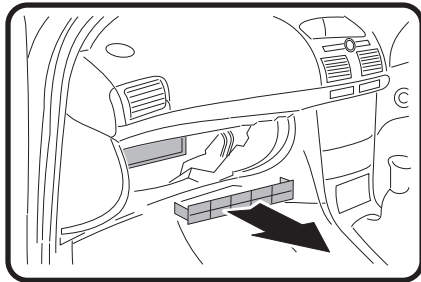
Filter located behind glove box



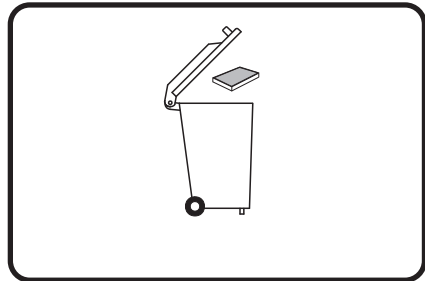
1: Open glove box, remove screw and washer, then remove the glovebox.



3: Remove used filter.



2: Remove filter cover.



4: Fit new Ryco filter, refit all previously removed parts, dispose of used filter correctly.

RYCO Group Pty Ltd
29 Taras Ave Altona
North Victoria 3025
Australia
www.rycofilters.com.au

RYCO Group- A division of
GUD (NZ) Holdings Limited.
19 Bell Avenue, Otahuhu,
Auckland 1060, New Zealand
www.ryco.co.nz