

NANOCAM+[®]

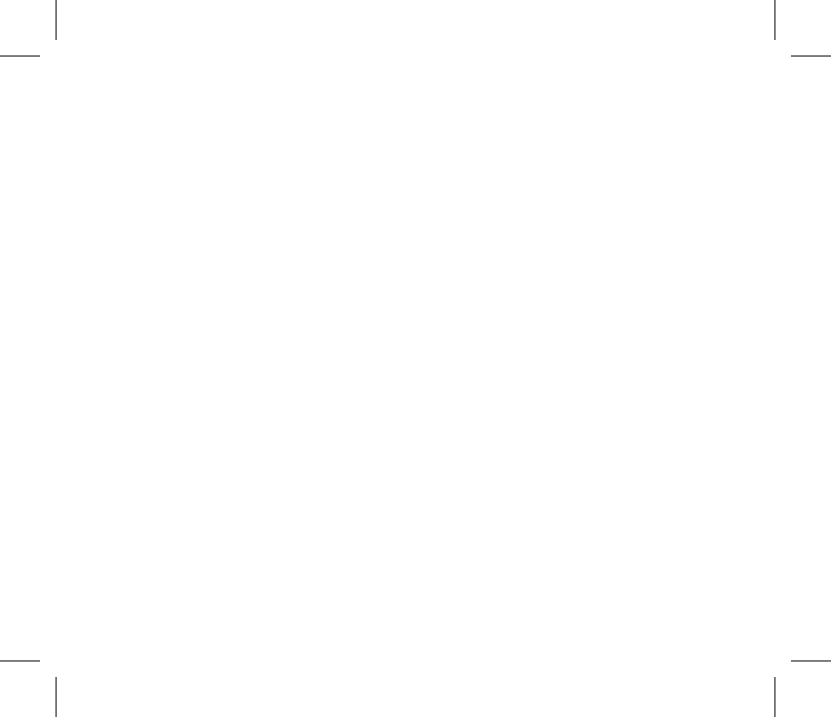
HD Dash Camera with
3.0" IPS Screen + 24 Hr Parkmode



USER MANUAL

Your Safety. Our Priority

NCP-DVRHD



CONTENTS

1.0 CAUTION	4
1.1 Battery Warning	5
1.2 Product Information	6
2.0 INTRODUCTION	7
2.1 Package Contents	8
2.2 Product Overview	9
3.0 BUTTON FUNCTIONS	10
4.0 GETTING STARTED	11
4.1 Inserting a Micro SD Card	11
4.2 Removing a Micro SD Card	12
4.3 Installing the NCP-DVRHD	13
4.4 Connecting to Power	14
4.5 LED Indicator	15

5.0	POWERING THE NCP-DVRHD ON/OFF	15
5.1	Auto Power On/Off	15
5.2	Manual Power On.....	15
5.3	Manual Power Off	16
5.4	Reset the Car DVR	16
6.0	INITIAL SETTINGS.....	16
6.1	Formatting the Inserted Micro SD Card	16
7.0	SETTING THE TIME AND DATE	17
8.0	VIDEO MODE	18
9.0	INTERFACE	19
9.1	Video Mode.....	19
9.2	Setup Menu	20
10.0	VIDEO MENU	21
11.0	SETUP MENU	24
12.0	PICTURE MODE	26

13.0	PLAYBACK	27
	13.1 Removing the Existing 3M Mount from my Windscreen	28
14.0	WARRANTY TERMS & CONDITIONS.....	28
15.0	NOTES.....	37

1.0 CAUTION

- Ensure you are using your Car Dash Cam within your countries' road laws. Please make sure you are familiar with your local road legislation before use.
- Avoid leaving your Dash Cam in direct sunlight for extended periods of time in an unventilated space.
- Please set time and date before you use this device to record.
- The notifications given by the Car Dash Cam are suggestions only, please drive to the actual conditions.
- The values displayed in this system, such as speed, position, and the distance warning, may be affected by the surrounding environment.
- The system is to be used only for non-commercial use, within the limits permitted by the relevant laws.
- Avoid using the Car Dash Cam near any devices that emit radio interference (e.g. Microwave Ovens).
- It is considered normal operation for the Car Dash Cam to get warm during use.

1.1 BATTERY WARNING

Always charge the Car Dash Cam using the provided charger. Improper charging of the Car Dash Cam may result in failure of the internal battery.

Never dismantle the Car Dash Cam or expose the internal battery.

Do not dispose of the Car Dash Cam in fire.

Dispose of the Car Dash Cam observing local regulations being mindful of the internal battery.

Do not attempt to replace or expose the internal battery.

NOTES ON INSTALLATION

- It is advised that the Car Dash Cam is installed near the rear view mirror, at the top centre of the windshield for optimal operation.
- Make sure that the lens is within the range of the windscreen wiper to ensure a clear view when it rains.
- Do not touch the lens with your fingers. Finger prints left on the lens will result in unclear videos or photos. If photos or videos are blurred, please clean the lens gently with a microfibre cloth.
- Only use the included cable to power the Car Dash Cam.
- The NCP-DVRHD is designed to be constantly connected to the included power supply, and is NOT designed to be used solely with the camera's built in battery.

1.2 PRODUCT INFORMATION

For latest manual and product updates please visit our website at www.nanocamplus.com.au or www.nanocamplus.co.nz

2.0 INTRODUCTION

Thank you for purchasing a Nanocam Plus Dash Cam. Please read through instructions before attempting to install or use this product.

This User guide is designed to assist with the day to day operation of the NCP-DVRHD.

Before attempting to use or install your Nanocam Plus NCP-DVRHD, please ensure you have read and understood all of the safety notes below.

- Avoid leaving your NCP-DVRHD in direct sunlight for extended periods of time in an unventilated space.
- Do not expose your NCP-DVRHD to liquids, excessive dusty conditions or temperatures exceeding 60°C.
- Only use the included cables to power and charge the NCP-DVRHD.
- Please do not attempt to adjust the NCP-DVRHD position or settings whilst you are operating your vehicle.
- Please clean the windshield thoroughly removing all dust and dirt particles before fixing the adhesive mount.
- Since the mount sticks on the wind shield with 3M mount, please ensure that the position of the camera is best located to capture maximum area.

- We suggest you to power-on the dash camera and test the playback image on screen first prior to removing the 3M tape for installation.
- Only remove the 3M tape when you are satisfied with the dash camera placement and image position are delivering the best possible image and view of the road ahead.
- Ensure you are using your NCP-DVRHD within your countries' road laws. Please make sure you are familiar with your local road legislation before use.

2.1 PACKAGE CONTENTS



Dash Camera



3M Mount



12/24V Adapter

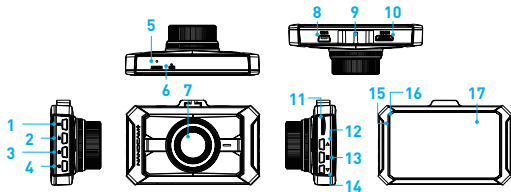


Spare 3M Adhesive



User Guide

2.2 PRODUCT OVERVIEW



- | | |
|--------------------------|--------------------------------|
| 1. Rec / OK Button | 10. HDMI Port (not applicable) |
| 2. Mode Button | 11. Micro SD card slot* |
| 3. Lock Recording Button | 12. Up Button |
| 4. ON / OFF Power Button | 13. Menu Button |
| 5. Reset | 14. Down Button |
| 6. Microphone | 15. Recording Indicator LED |
| 7. Lens | 16. Power ON LED Indicator |
| 8. Mini USB power socket | 17. Display Screen |
| 9. Slot for fixing mount | |

3.0 BUTTON FUNCTIONS

[M] MODE BUTTON

When Device is not recording, press the mode button to switch between Video Mode / Photo Mode / Play Back mode.

[OK] OK BUTTON

Press the OK Button to start/stop video recording in Video mode.

Press the OK Button to take photo in Camera mode.

Press the OK Button to play/pause current video on playback mode.

[⏸] LOCK FILE BUTTON

When DVR is recording, Press Lock Button to lock the current file. Locked file won't be over recorded during loop recording.

[⏻] POWER BUTTON

Press and hold the Power Button to Power Off the Device. Press once to switch LCD Screen Off however DVR will continue recording.

[▼] DOWN BUTTON

In Settings menu use the down key to toggle between the settings.

[⏏] MENU BUTTON

Press to enter or exit the Settings Menu.

[▲] UP BUTTON

In the Settings menu use the Up Button to toggle between the settings.

Short press the UP Key to Mute/Unmute inbuilt Microphone.

[RESET] RESET BUTTON

Press to reset to factory settings.

[MIC] MIC

Microphone Position

[TF] TF CARD SLOT

Micro SD Card Slot. Minimum 16GB and maximum 32 GB, Class 6 SD Card.

[USB] USB INTERFACE

Mini USB Power cable to connect with power adapter provided in the packaging.

4.0 GETTING STARTED

4.1 INSERTING A MICRO SD CARD

With the Car DVR turned off and the screen facing towards you insert your Micro SD Card (not included) in the slot on the right side of the NCP-DVRHD with the text on the Micro SD card away from you. Push the memory card in until a click is heard.

4.2 REMOVING A MICRO SD CARD

Ensure that the NCP-DVRHD is powered off, and with your thumbnail press in the Micro SD Card until a click is heard. The Micro SD Card will eject from the NCP-DVRHD when released.

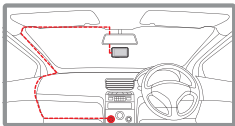
NOTE:

- Micro SD Card is not included.
- Do not remove or insert the memory card while the Car DVR is turned on as this may damage the memory card or corrupt the memory cards stored data.
- Please use a Class 6 or higher rated micro SD card with a capacity of 16GB minimum to 32GB maximum.
- Please format the Micro SD card before the initial use. Formatting instructions are mentioned on section 6.1 on page 16. This will make sure that the card is ready for your camera.
- When removing the memory card, be careful as the card may eject quickly.

- We recommend that you format the memory card periodically every 2-3 months. This will wipe all files from the SD card and be ready for continued use with your Dash Cam. **(This should only be done AFTER you have downloaded all files from the card.)**

4.3 INSTALLING THE NCP-DVRHD

1. Connect the 3M mount from the top of the DVR by sliding in the mount via the mount attachment slot.
2. Please follow the instructions on **page 6** before continuing.
3. Remove the protective stickers from the Car DVR and the 3M Mount.
4. Press the mount base firmly against the windscreen and hold for 30 seconds.
5. Insert the power cable adapter onto the dash camera power socket.



NOTE:

- It is advised that the NCP-DVRHD is installed in the centre of the windscreen behind the rear view mirror.

4.4 CONNECTING TO POWER

Only use the included charger to power and charge the Car DVR.

1. Once the Car DVR is securely installed on your vehicle's windscreen, plug the DC Power Plug into your vehicle's cigarette lighter.
2. Run the power cable along your vehicle's console and windscreen and plug the USB Micro plug into the Car DVR and the USB A end into the DC Power Plug.

NOTES:

- It is recommended that the Car DVR is installed behind your vehicle's rear view mirror.
- Make sure that the camera view is not obstructed by any window tint or any other objects.
- The NCP-DVRHD is designed to be constantly powered by the included DC Power Plug. The internal battery is designed to hold saved settings and power the camera when in Park Mode. The battery is NOT designed for primary use.

4.5 LED INDICATOR

- Flashing blue light indicates recording is in progress, while continuous blue light indicates DVR is not recording.
- Continuous red light indicates the internal battery is charging.

NOTE:


- The NCP-DVRHD is designed to be constantly powered by the included DC Power Plug. The internal battery is designed to hold saved settings and power the camera when in Park Mode. The battery is NOT designed for primary use.

5.0 POWERING THE NCP-DVRHD ON/OFF

5.1 AUTO POWER ON/OFF

When the Car DVR is correctly installed and connected to your vehicle's 12/24v power supply, the Car DVR will automatically power up and start recording when the vehicle accessories are activated.

5.2 MANUAL POWER ON

Hold the [] Power button on the lower right hand side of the camera until the Nanocam Plus start up screen appears.

5.3 MANUAL POWER OFF

Make sure that recording has been stopped and then press the **[⏻]** Power button on the lower right hand side of the car DVR. After powering down the device please wait for 10 seconds before turning the Car DVR back on.

5.4 RESET THE CAR DVR

If the Car DVR does not function normally, try restarting the car DVR. To restart the car DVR, using a small pin press and hold the Reset button on the bottom side of the camera.

6.0 INITIAL SETTINGS

Before using the Car DVR we recommend Formatting the Inserted Micro SD Card and setting the correct Time and Date.

6.1 FORMATTING THE INSERTED MICRO SD CARD

Formatting the Micro SD card will delete all information on the inserted Micro SD Card and prepare the card for use with the Car DVR.

1. Press the **[OK]** Button to stop the Car DVR from recording.
2. Press the **[⏏]** Menu Button twice to enter the Settings Menu.
3. Use the **[▲]** and **[▼]** Buttons to navigate the Setup Menu and highlight the Format SD Card setting and press the right **[OK]** to select.

4. Press the [▼] Down Button and select Apply.
5. Press the [OK] OK Button to confirm.

NOTES:

- Menus cannot be accessed while the camera is recording. Please stop the recording before attempting to access the menu.
- Formatting your Micro SD Card will delete all files from the card. Once these files have been deleted you will not be able to recover them.

7.0 SETTING THE TIME AND DATE

Setting the Time and Date allows you to stamp your footage with the time as a reference.

1. Press the [OK] Button to stop the Car DVR from recording.
2. Press the [≡] Button twice to enter the Settings Menu.
3. Use the [▲] and [▼] Buttons to navigate the Setup Menu and highlight the Date/Time setting and press the right [OK] button to select.

- Use the [▲] and [▼] buttons to edit the selected digit and the right [OK] button to confirm and progress to the next digit. The final field sets the format that the date will be presented in, pressing the [📅] button with this field highlighted will save the date and time and return you to the settings menu.

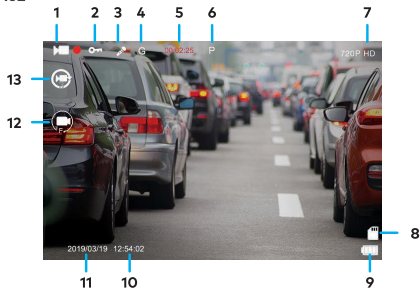
NOTES:

- Menu cannot be accessed while the camera is recording. Please stop the recording before attempting to access the menu.
- Once the time and date is set, it can be stamped onto your footage using the Date Stamp setting. Please see section Date Stamp for more details.

8.0 VIDEO MODE

When the Car DVR is powered up the video screen will start by default. In this screen recording will automatically start and can be stopped by pressing the [OK] Button. To access the Video Menu, ensure that the Car DVR is not recording then press the [📅] button.

9.0 INTERFACE



9.1 VIDEO MODE

1. **Video Mode:** Red circle indicates DVR is recording.
2. **Lock File:** Current Recorded File Locked indicator.
3. **Microphone:** Turns on or off the Microphone.
4. **G-Sensor:** Turns on or off the G-Sensor.

5. **Duration:** 00:00:01 Loop Recording timer.
6. **Park Mode:** Turns on or off the Park Mode.
7. **Resolution:** 720P HD Video Recording Resolution.
8. **Micro SD Card:** Indicates inserted SD Card.
9. **Battery:** Indicates battery level.
10. **Time:** (00:00:01)
11. **Date:** (01/01/2019)
12. **Motion Detection:** Displays Motion Detection
13. **Loop Recording:** Number shows the loop recording duration in minutes.

9.2 SETUP MENU

1. Press **[OK]** to stop Recording.
2. Press the **[Menu]** Menu button twice to enter into the Settings Menu.
3. Press the **[▲]** and **[▼]** Button to select the setting you wish to change.
4. Press **[OK]** Button on your selected option.

10.0 VIDEO MENU

Menu	Select Settings	Description
Resolution	720P FHD @30 FPS	Records the Video in 720P Resolution. Default: 720P @30 FPS
Loop Recording	OFF/1,2,3,5 Minutes	Loop Recording defines the length of time the NCP-DVRHD records before creating a new file. Using the Off setting will record the longest possible loops under the file size of 100 MB (around 1 minute). Default: 1 Minute
Exposure	+2.0, +5/3, +4/3, +1.0, +2/3, +1/3, +0.0, -1/3, -2/3, -1.0, -4/3, -5/3, -2.0	To increase or decrease the exposure on recorded Video. Default 0.0

VIDEO MENU CONT'

Menu	Select Settings	Description
Motion Detection	Off / On	<p>DVR will stop recording if it doesn't detect any motion and will immediately start recording if it detects motion.</p> <p>We suggest to use this option when DVR is connected via Hardwire kit.</p> <p><i>*Hardwire kit not provided.</i></p> <p>Default: Off</p>
Microphone	Off / On	<p>Turning this setting off mutes the built in microphone.</p> <p>Default: On</p>
Date/Time	Set Date and Time	<p>Using the Up/Down and OK buttons to enter the date and time (24hr clock) to stamp onto your footage. Once you have finished use the Menu button to save and return to the Settings Menu.</p>

VIDEO MENU CONT'

Menu	Select Settings	Description
G-Sensor	Off / Low / Medium / High	To adjust the sensitivity of the G-sensor. High is the highest sensitivity and Low is the lowest. Default: Middle
Number Plate Stamp	Input Number Plate	Input your car number plate and it will be watermarked on the recorded footage. Using the UP/DOWN and OK buttons to input a maximum of 8 Digits for the License Plate number.

11.0 SETUP MENU

Menu	Select Settings	Description
Park Mode	Off / On	<p>Park Mode helps to make your car safe by recording the video even when the Engine is switched off. Your DVR will record the incidents when ever it detects an impact and the G-Sensor is triggered. Park Mode will record a maximum of 10 instances during a 24 hour period, once the battery has been fully charged.</p> <p>Default: Off</p>
Date Stamp	Off / On	<p>Select On/Off to have the date and time stamped on the recorded Video.</p> <p>Default: On</p>
Auto Display Off	Off / 3 / 5 / 10 Minutes	<p>Auto Screen Saver setting determines the amount of time before the display screen turns off and enters into Screen Saver Mode. <i>(NCP-DVRHD will keep on recording even if the display is Off).</i></p> <p>Default : Off</p>

SETUP MENU CONT'

Menu	Select Settings	Description
Keypad Tone	Off / On	Mutes control for Key beeps. Default: On
Language	Select Language	Select Menu Language. Default: English
Format SD Card	Cancel / Apply	Format the inserted Micro SD Card, deleting all photos, videos and data.
Factory Settings	Restore factory settings	Cancel / OK
Version	OK	Displays the installed firmware version.

12.0 PICTURE MODE

Picture
Mode

Exposure

White
Balance

ISO



Resolution

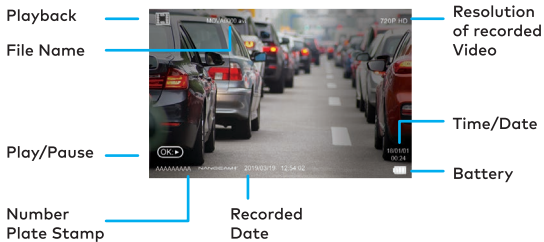
Favorites

SD Card

Battery
Indicator

1. Press OK to Stop Recording.
2. Press M (Mode Key) once to enter Picture Mode.
3. Press OK Key to take pictures.

13.0 PLAYBACK



1. Press the **[OK]** OK Button once to Stop Recording.
2. Press **[M]** M (Mode Key) twice to enter Playback Mode.
3. Press **[▲]** and **[▼]** button to select the desired file to be played back.
4. Press the OK button to Playback selected video file and then press again to pause.

13.1 REMOVING THE EXISTING 3M MOUNT FROM MY WINDSCREEN

To remove your existing Nanocam Plus 3M Mount from your windscreen, it's recommend that you gently twist the mounting bracket left and right until the 3M tape underneath starts to give way.

You should then be able to slowly remove the mount from your windscreen, once removed you can then clean your windscreen of any dirt, residue or fingerprints.

When you are ready to reinstall your mount back onto your windscreen, please use the spare 3M adhesive provided.

14.0 WARRANTY TERMS & CONDITIONS

Our goods come with guarantees that cannot be excluded under the Australian & New Zealand Consumer Law. You are entitled to a replacement or refund for a major failure and for compensation for any other reasonably foreseeable loss or damage. You are also entitled to have the goods repaired or replaced if the goods fail to be of acceptable quality and the failure does not amount to a major failure.

This warranty is provided in addition to your rights under the Australian & New Zealand Consumer Law.

NanoCam Plus warrants that this product is free from defects in material and workmanship for a period of 12 months from the date of purchase or for the period stated on the packaging. This warranty is only valid where you have used the product in accordance with any recommendations or instructions provided by NanoCam Plus.

This warranty excludes defects resulting from alterations of the product, accident, misuse, abuse or neglect.

In order to claim the warranty, you must return the product to the retailer from which it was purchased or if that retailer is part of a National network, a store within that chain, along with satisfactory proof of purchase. The retailer will then return the goods to NanoCam Plus.

NanoCam Plus will repair, replace or refurbish the product at its discretion. The retailer will contact you when the product is ready for collection. All costs involved in claiming this warranty, including the cost of the retailer sending the product to NanoCam Plus, will be borne by you.

Ph: +61 03 8331 4800

Email: info@nanocamplus.com.au

INDEMNITY

YOU AGREE TO DEFEND, INDEMNIFY AND HOLD HARMLESS NANOCAM PLUS AND ITS SUBSIDIARIES AND AFFILIATES FROM AND AGAINST ANY AND ALL CLAIMS, PROCEEDINGS, INJURIES, LIABILITIES, LOSSES, COSTS AND EXPENSES (INCLUDING REASONABLE LEGAL FEES), INCLUDING BUT NOT LIMITED TO, CLAIMS ALLEGING NEGLIGENCE, INVASION OF PRIVACY, COPYRIGHT INFRINGEMENT AND/OR TRADEMARK INFRINGEMENT AGAINST NANOCAM PLUS AND ITS SUBSIDIARIES AND AFFILIATES OR THE NANOCAM PLUS SERVICES, RELATING TO OR ARISING OUT OF YOUR BREACH OF ANY PROVISION OF THESE TERMS, YOUR MISUSE OF THE NANOCAM PLUS OR NANOCAM PLUS SERVICES, OR YOUR UNAUTHORIZED MODIFICATION OR ALTERATION OF PRODUCTS OR SOFTWARE.

WARRANTY AND WARRANTY DISCLAIMER

NANOCAM PLUS HAS A LIMITED WARRANTY ON WHEREBY NANOCAM PLUS WARRANTS TO AND ONLY TO YOU THAT THE ON NANOCAM PLUS VEHICLE DASH CAMERAS, MIRROR DASH CAMERAS, FRONT, REAR AND REVERSING CAMERAS AND MIRROR MONITOR DEVICES WILL BE FREE FROM DEFECTS IN MATERIALS AND WORKMANSHIP FOR ONE (1) YEAR FROM THE DATE OF YOUR PURCHASE OF THE ON NANOCAM

PLUS VEHICLE DASH CAMERAS, MIRROR DASH CAMERAS, FRONT, REAR AND REVERSING CAMERAS AND MIRROR MONITOR DEVICES (UNLESS A LONGER WARRANTY PERIOD IS REQUIRED BY LAW).

THE SPECIFICS OF THIS NANOCAM PLUS LIMITED WARRANTY ARE AT [HTTPS://WWW.NANOCAMPLUS.COM.AU/WARRANTY](https://www.nanocamplus.com.au/warranty)

TO THE EXTENT POSSIBLE UNDER GOVERNING LAW, OTHER THAN THE ABOVE PRODUCT WARRANTY FOR THE NANOCAM PLUS VEHICLE DASH CAMERAS, MIRROR DASH CAMERAS, FRONT, REAR AND REVERSING CAMERAS AND MIRROR MONITOR DEVICES, YOU UNDERSTAND AND AGREE THAT THE NANOCAM PLUS SERVICES ARE PROVIDED ON AN "AS IS" AND "AS AVAILABLE" BASIS. NANOCAM PLUS MAKES NO WARRANTY THAT THE NANOCAM PLUS SERVICES WILL MEET YOUR REQUIREMENTS OR THAT USE OF THE NANOCAM PLUS SERVICES WILL BE UNINTERRUPTED, TIMELY, SECURE OR ERROR-FREE NOR DOES NANOCAM PLUS MAKE ANY WARRANTY AS TO THE ACCURACY OR RELIABILITY OF ANY INFORMATION OBTAINED THROUGH THE NANOCAM PLUS SERVICES (INCLUDING THIRD PARTY CONTENT), THAT ANY DEFECTS IN THE NANOCAM PLUS SERVICES WILL BE CORRECTED OR THAT THE NANOCAM PLUS PRODUCTS OR NANOCAM PLUS SERVICES WILL BE COMPATIBLE WITH ANY OTHER SPECIFIC HARDWARE OR SERVICE. FURTHER, NANOCAM PLUS DOES NOT WARRANT THAT THE

NANOCAM PLUS SERVICES OR THE NANOCAM PLUS SERVERS THAT PROVIDE YOU WITH DATA AND CONTENT ARE FREE OF VIRUSES OR OTHER HARMFUL COMPONENTS. NANOCAM PLUS ALSO ASSUMES NO RESPONSIBILITY FOR AND SHALL NOT BE LIABLE FOR ANY DAMAGES CAUSED BY VIRUSES THAT MAY INFECT YOUR NANOCAM PLUS VEHICLE DASH CAMERAS, MIRROR DASH CAMERAS, FRONT, REAR AND REVERSING CAMERAS AND MIRROR MONITOR DEVICES, COMPUTER SOFTWARE, OR OTHER HARDWARE.

YOU AGREE THAT NANOCAM PLUS IS NOT AN INSURER AND THAT NANOCAM PLUS IS NOT PROVIDING ME WITH INSURANCE OF ANY TYPE. ANY AMOUNTS THAT YOU PAY NANOCAM PLUS FOR THE NANOCAM PLUS SERVICE ARE NOT INSURANCE PREMIUMS AND ARE NOT RELATED TO THE VALUE OF YOUR VEHICLE OR PROPERTY, ANYONE ELSE'S PROPERTY LOCATED IN YOUR VEHICLE OR PREMISES, OR ANY RISK OF LOSS IN YOUR VEHICLE OR AT YOUR PREMISES. IF YOU WANT INSURANCE TO PROTECT AGAINST ANY RISK OF LOSS AT YOUR VEHICLE OR PREMISES, YOU WILL PURCHASE IT. IN THE EVENT OF ANY LOSS, DAMAGE OR INJURY, YOU WILL NOT LOOK TO NANOCAM PLUS TO COMPENSATE YOU OR ANYONE ELSE. YOU RELEASE AND WAIVE FOR YOURSELF AND YOUR INSURER ALL SUBROGATION AND OTHER RIGHTS TO RECOVER AGAINST NANOCAM PLUS ARISING AS A RESULT OF THE PAYMENT OF ANY CLAIM FOR LOSS, DAMAGE OR INJURY.

NANOCAM PLUS'S EQUIPMENT AND SERVICES DO NOT CAUSE AND CANNOT ELIMINATE OCCURRENCES OF CERTAIN EVENTS, INCLUDING, BUT NOT LIMITED TO, FIRES, FLOODS, BURGLARIES, ROBBERIES AND MEDICAL PROBLEMS. NANOCAM PLUS MAKES NO GUARANTEE OR WARRANTY, INCLUDING ANY IMPLIED WARRANTY OF MERCHANTABILITY OR FITNESS FOR A PARTICULAR PURPOSE, THAT THE NANOCAM PLUS EQUIPMENT AND SERVICES PROVIDED WILL DETECT OR AVERT SUCH INCIDENTS OR THEIR CONSEQUENCES. NANOCAM PLUS DOES NOT UNDERTAKE ANY RISK THAT YOU OR YOUR VEHICLE OR PROPERTY, OR THE PERSON OR PROPERTY OF OTHERS, MAY BE SUBJECT TO INJURY OR LOSS IF SUCH AN EVENT OCCURS. THE ALLOCATION OF SUCH RISK REMAINS WITH YOU, NOT NANOCAM PLUS.

OTHER THAN THE ABOVE PRODUCT WARRANTY FOR THE NANOCAM PLUS VEHICLE DASH CAMERAS, MIRROR DASH CAMERAS, FRONT, REAR AND REVERSING CAMERAS AND MIRROR MONITOR DEVICES, NANOCAM PLUS AND ITS SUPPLIERS DISCLAIM ALL WARRANTIES OF ANY KIND, WHETHER EXPRESS, IMPLIED, OR STATUTORY, REGARDING THE NANOCAM PLUS EQUIPMENT AND ANY ASSOCIATED APP/SERVICE. INCLUDING ANY IMPLIED WARRANTY OF TITLE, MERCHANTABILITY, FITNESS FOR A PARTICULAR PURPOSE, OR NONINFRINGEMENT OF THIRD PARTY RIGHTS. BECAUSE SOME JURISDICTIONS DO NOT PERMIT

THE EXCLUSION OF IMPLIED WARRANTIES, THE LAST SENTENCE OF THIS SECTION MAY NOT APPLY TO YOU. NANOCAM PLUS HEREBY FURTHER EXPRESSLY DISCLAIMS ALL LIABILITY FOR ANY CLAIMS FOR SERVICE FAILURES THAT ARE DUE TO NORMAL PRODUCT WEAR, PRODUCT MISUSE, ABUSE, PRODUCT MODIFICATION, IMPROPER PRODUCT SELECTION OR YOUR NON-COMPLIANCE WITH ANY AND ALL APPLICABLE FEDERAL, STATE OR LOCAL LAWS. THIS WARRANTY AND WARRANTY DISCLAIMER GIVE YOU SPECIFIC LEGAL RIGHTS, AND YOU MAY HAVE OTHER RIGHTS THAT VARY BY STATE, PROVINCE, OR COUNTRY. OTHER THAN AS PERMITTED BY LAW, NANOCAM PLUS DOES NOT EXCLUDE, LIMIT OR SUSPEND OTHER RIGHTS YOU HAVE, INCLUDING THOSE THAT MAY ARISE FROM THE NONCONFORMITY OF A SALES CONTRACT. FOR A FULL UNDERSTANDING OF YOUR RIGHTS YOU SHOULD CONSULT THE LAWS OF YOUR STATE, PROVINCE, OR COUNTRY. FOR OUR AUSTRALIAN CUSTOMERS: PLEASE NOTE THAT THIS WARRANTY IS IN ADDITION TO ANY STATUTORY RIGHTS IN AUSTRALIA IN RELATION TO YOUR GOODS WHICH, PURSUANT TO THE AUSTRALIAN CONSUMER LAW, CANNOT BE EXCLUDED.

LIMITATIONS OF NANOCAM PLUS LIABILITY

UNDER NO CIRCUMSTANCES WILL NANOCAM PLUS BE LIABLE IN ANY WAY FOR ANY CONTENT, INCLUDING, BUT NOT LIMITED TO, THE LOSS

OF CONTENT, ANY ERRORS OR OMISSIONS IN ANY CONTENT, OR ANY LOSS OR DAMAGE OF ANY KIND INCURRED IN CONNECTION WITH USE OF OR EXPOSURE TO ANY CONTENT POSTED, EMAILED, ACCESSED, TRANSMITTED, OR OTHERWISE MADE AVAILABLE VIA THE NANOCAM PLUS APP.

NANOCAM PLUS LIABILITY FOR DAMAGES, ESPECIALLY FOR BREACH OF DUTY OR OBLIGATION, DELAY IN PERFORMANCE, NON-PERFORMANCE, OR MALPERFORMANCE SHALL BE PRECLUDED, EXCEPT WHEN THESE ARE DUE TO NEGLIGENT BREACHES OF ANY SIGNIFICANT CONTRACTUAL DUTY OR OBLIGATION ON THE PART OF NANOCAM PLUS. ANY LIABILITY FOR NEGLIGENCE IS LIMITED TO DIRECT LOSSES USUALLY AND TYPICALLY FORESEEABLE IN SUCH CASE. SHOULD THE CLAIM FOR DAMAGES BE BASED ON WILFUL OR GROSSLY NEGLIGENT BREACH OF CONTRACTUAL DUTY OR OBLIGATION ON THE PART OF NANOCAM PLUS, THE PRECLUSION AND LIMITATION OF LIABILITY MENTIONED IN THE PRECEDING SENTENCES WILL NOT APPLY. THE PRECEDING PRECLUSION AND LIMITATION OF LIABILITY WILL ALSO NOT APPLY TO CLAIMS FOR DAMAGES ARISING OUT OF LOSS OF LIFE, BODILY INJURY OR HEALTH IMPACTS FOR WHICH NANOCAM PLUS MAY BE LIABLE, OR FOR NON-CONTRACTUAL LIABILITY.

SOME STATES AND COUNTRIES DO NOT ALLOW THE EXCLUSION OR LIMITATION OF INCIDENTAL OR CONSEQUENTIAL DAMAGES, SO THE ABOVE LIMITATION OR EXCLUSION MAY NOT APPLY TO YOU. ADDITIONALLY, THIS PROVISION IS NOT INTENDED TO LIMIT NANOCAM PLUS'S LIABILITY IN THE EVENT OF NANOCAM PLUS'S WILLFUL OR INTENTIONAL MISCONDUCT.

15.0 NOTES

Your Safety. Our Priority



All Images, Information and Content are Copyright © 2020
Directed Electronics Australia Pty Ltd. All Rights Reserved.

www.nanocamplus.com.au | www.nanocamplus.co.nz

DIRECTED

www.directed.com.au | www.directed.co.nz