

GRAVITY FEED AIR SPRAY GUN



BLACKRIDGE

Manufactured and packaged for SRGS
PTY LTD ABN 23 113 230 050
751 Gympie Road, Lawnton, Queensland 4501, Australia

GRAVITY FEED AIR SPRAY GUN



**INSTRUCTION
MANUAL**

BLACKRIDGE

PLU 572924

WARRANTY

Our product is guaranteed to be free from quality and manufacturing defects for a period of 12 months.

If your product becomes defective during this period, SRGS PTY LTD will offer you either a replacement, credit or refund where a product is faulty; wrongly described; different from the sample shown to you or do not do what they are supposed to do.

This warranty will not cover substantially modified product; misuse or abuse of the product contrary to user instructions or packaging label; change of mind and normal wear and tear.

Our goods come with guarantees that cannot be excluded under the Australian Consumer Law. You are entitled to a replacement or refund for a major failure and for compensation for any other reasonably foreseeable loss or damage. You are also entitled to have the goods repaired or replaced if the goods fail to be of acceptable quality and failure does not amount to a major failure.

To claim the warranty, take the product to the front Service Desk of your nearest store of purchase. You will need to show receipt or other proof of purchase. Additional information may be required to process your claim. Should you not be able to provide proof of purchase with a receipt or bank statement, identification showing name, address and signature may be required to process your claim.

Any expenses relating to the return of your product to the store will normally have to be paid by you. For online store purchases, SRGS PTY LTD will pay for the return freight for any product assessed as having a major failure.

The benefits to the customer given by this warranty are in addition to other rights and remedies of the Australian Consumer Law in relation to the goods or services to which this warranty relates.

This warranty is provided by SRGS PTY LTD, 751 Gympie Road, Lawnton, QLD 4501, Australia. Phone: 1300 175 010.

ILLUSTRATION



TECHNICAL DATA

Model: W-960

Nozzle Size: 1.4mm (standard)

Recommended Operating Pressure: 43 PSI

Average Air Consumption: 100 LPM

Fluid Delivery: 0.16-0.24 LPM

Painting Fan: 180-240mm (at distance of 20cm)

Cup Size: 600ml

Air Inlet: 1/4"

WARNING

When using the tool, basic safety precautions should always be followed to reduce the risk of personal injury and damage to equipment. Please read all instructions carefully before using this tool.

- **WORK AREA CONDITIONS.** Cluttered areas invite injuries. Avoid any ignition sources, such as smoking, open flames and similar hazards.
- **ADDITIONAL WORK AREA CONDITIONS.** Do not use machines or power tools in damp or wet locations. Do not expose to rain. Keep work area illuminated.
- **KEEP CHILDREN AWAY.** Children should not be allowed in the work area. Do not let them handle machines, tools or extension cords.
- **STORE IDLE EQUIPMENT.** When not in use, tools must be stored in a dry location to inhibit rust or corrosion. Always lock up tools and keep out of reach of children.

- **USE THE RIGHT TOOL FOR THE JOB.** Always use the tool for the specific purpose it was intended.
- **DRESS PROPERLY.** Always wear the appropriate clothing suited to the painting application.
- **WEAR EYE PROTECTION.** Always wear appropriate eye protection when operating a spray gun.
- **DO NOT OVER-REACH.** Keep proper footing and balance at all times. Do not reach over or across running machines.
- **STAY ALERT.** Watch what you are doing and use common sense. Do not operate any tools when you are tired.
- **CHECK FOR DAMAGED PARTS.** Before using any tool, any part that appears damaged should be carefully checked to determine if it will operate properly and perform its intended function. Any part that cannot fulfill its intended purpose should be replaced.
- **REPLACEMENT PARTS AND ACCESSORIES.** When servicing, use only identical replacement parts.

OPERATION

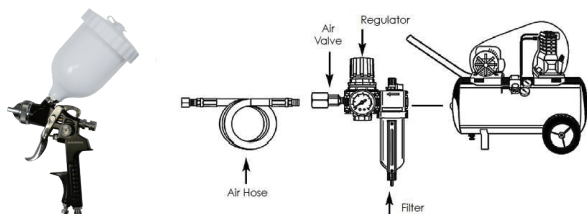
Preparation before operating:

- Check and replace any damaged or wrong parts.
- Make sure the nozzle and air trigger are free to operate correctly.
- Attach paint pot to the spray gun.
- Pour paint into paint pot and screw on lid securely.

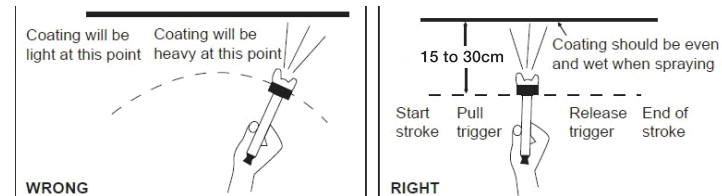
WARNING: When filling or refilling the material, disconnect your gun from the air supply to avoid accidental spillage or spraying.

Operating:

Recommended air line components (for best results you should incorporate an air regulator with filter).



- Connect the air source hose to the gun. Make sure the air pressure does not exceed 43 PSI (3 BAR).
- Pull the trigger slowly and move the spray gun in parallel strokes to the object being painted. Keep the distance from the object being painted at 15 to 30cm. This may slightly differ depending on the flow adjustment and the material being sprayed.
- Release the trigger after each forward movement; pull the trigger again on the return movement.
- When using a vertical pattern, move the spray gun in a horizontal motion. When using a horizontal pattern, move the spray gun in a vertical motion. A round pattern requires a greater distance from the object being painted.



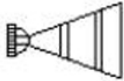


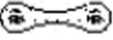

- When finished, release the trigger and disconnect from the air source. The spray gun may still have pressure; point the spray gun towards scrap material and pull the trigger until all of the pressure is exhausted.

MAINTENANCE

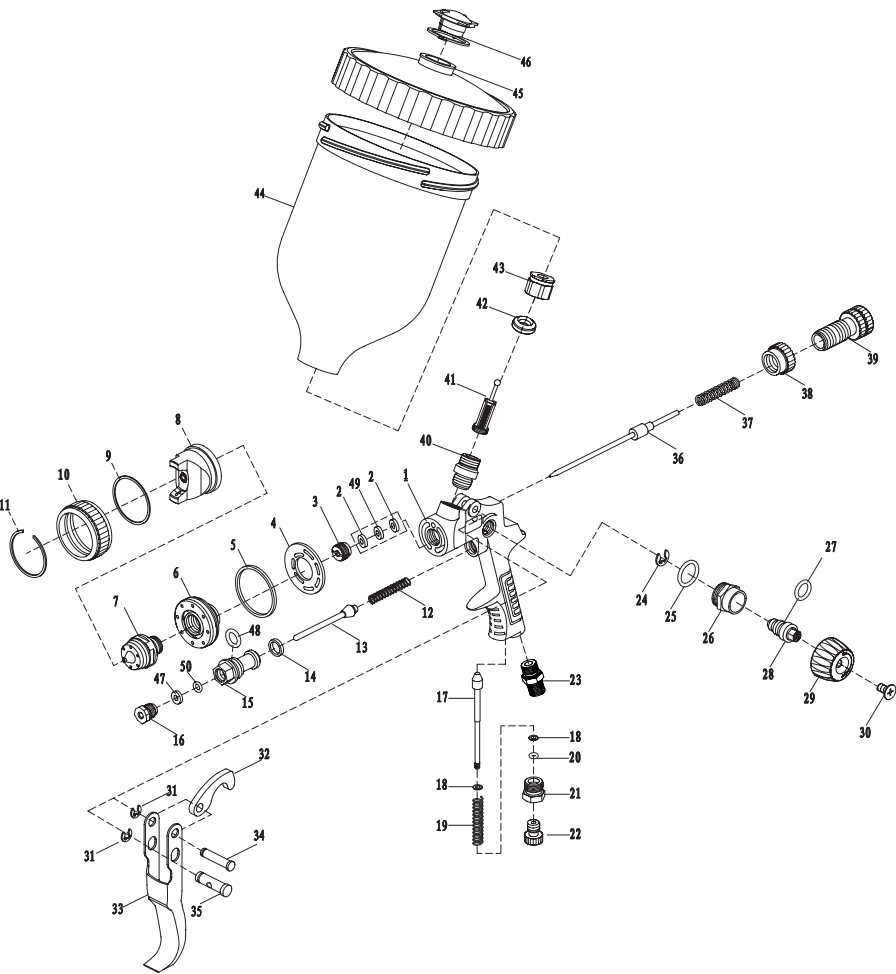
- Pour remaining paint into another container and then clean paint pot and air nozzle. Spray a small amount of thinner to clean the passage. Incomplete cleaning will cause an adverse pattern shape when spraying. Clean thoroughly, immediately after use.
- Clean other sections with a cloth, soaked with thinner.
- Ensure paint passages have been fully cleaned before disassembly.
- Remove fluid nozzle after removing fluid needle set or while keeping fluid needle pulled, in order to protect the seat section.

CAUTION: Never use wire or other hard objects to clear the nozzle and clean the fluid needle. This will cause damage to the components. Never immerse the whole gun into solvent such as thinner as it will damage the air nozzle, fluid nozzle and needle.

TROUBLESHOOTING

SPRAY PATTERN	REASON	SOLUTION
 <p>Ring or Fluttering</p>	Air enters between the fluid nozzle and tapered seat of the gun body.	Remove the fluid nozzle and clean the seat. Replace if damaged.
	Air enters near the needle sealing nut.	Tighten the needle sealing nut.
	Air enters between material passage connector and cup.	Assemble and tighten the relative parts again after cleaning.
 <p>Crescent</p>	Paint build up on air nozzle partially clogs horn holes. Air pressure from each horn is different.	Remove obstructions from horn holes. Do not use metal objects to clean horn holes.
 <p>Inclined</p>	Paint build up on the periphery of the fluid nozzle hole or centre hole of air nozzle damaged.	Remove obstructions or replace if necessary.
	Loose fluid nozzle.	Remove fluid nozzle, clean and replace.
 <p>Split</p>	Paint viscosity too low.	Add paint to increase viscosity.
	Fluid output too high.	Adjust the fluid adjustment knob or pattern adjustment knob.
 <p>Heavy</p>	Paint viscosity too high.	Add thinner to reduce viscosity.
	Fluid output too low.	Adjust the spray adjustment valve to allow more fluid output.

PARTS LIST



NO.	Description	Quantity	NO.	Description	Quantity
1	Gun body	1	26	Pattern adj.seat	1
2	Sealing gasket	2	27	O ring 6 x 1.8	1
3	Sealing screw	1	28	Pattern adj.stem	1
4	Air ring	1	29	Pattern adj.knob	1
5	Nozzle seat gasket	1	30	Bolt M4 x 8	1
6	Nozzle seat	1	31	Opening stopper 4	2
7	Material nozzle	1	32	Hanger	1
8	Air nozzle	1	33	Trigger	1
9	Air nozzle gasket	1	34	Trigger pin	1
10	Locking knob	1	35	Flexible pin	1
11	Air nozzle circlip	1	36	Needle set	1
12	Air valve spring	1	37	Needle adj.spring	1
13	Air valve stem	1	38	Needle adj.seat	1
14	Sealing gasket	1	39	Needle adj.knob	1
15	Air valve body	1	40	Material passage connector	1
16	Sealing screw	1	41	Filter	1
17	Airflow adj.stem	1	42	Sealing gasket	1
18	Gasket 3	2	43	Rivet	1
19	Airflow adj.spring	1	44	Cup	1
20	O ring 2.5 x 1.8	1	45	Cup cover	1
21	Airflow adj.seat	1	46	Cup cover cap	1
22	Airflow adj.knob	1	47	Sealing gasket	1
23	Air joint	1	48	O ring 7.5 x 1.8	1
24	Opening stopper 3.5	1	49	Foamed PE	1
25	O ring 8 x 1.5	1	50	O ring 2.8 x 1.8	1

NOTE:

When spray painting consider the size of the job and the size of your air compressor being used. When spray painting large jobs like a fence or car, a Belt Drive Air compressor is recommended. Always refer to the duty cycle of your air compressor before spray painting.