

## WARRANTY

Our product is guaranteed to be free from quality and manufacturing defects for a period of 12 months.

If your product becomes defective during this period, SRGS PTY LTD will offer you either a replacement, credit or refund where a product is faulty; wrongly described; different from the sample shown to you or do not do what they are supposed to do.

This warranty will not cover substantially modified product; misuse or abuse of the product contrary to user instructions or packaging label; change of mind and normal wear and tear.

Our goods come with guarantees that cannot be excluded under the Australian Consumer Law. You are entitled to a replacement or refund for a major failure and for compensation for any other reasonably foreseeable loss or damage. You are also entitled to have the goods repaired or replaced if the goods fail to be of acceptable quality and failure does not amount to a major failure.

To claim the warranty, take the product to the front Service Desk of your nearest store of purchase. You will need to show receipt or other proof of purchase. Additional information may be required to process your claim. Should you not be able to provide proof of purchase with a receipt or bank statement, identification showing name, address and signature may be required to process your claim.

Any expenses relating to the return of your product to the store will normally have to be paid by you. For online store purchases, SRGS PTY LTD will pay for the return freight for any product assessed as having a major failure.

The benefits to the customer given by this warranty are in addition to other rights and remedies of the Australian Consumer Law in relation to the goods or services to which this warranty relates.

This warranty is provided by SRGS PTY LTD, 751 Gympie Road, Lawnton, QLD 4501, Australia. Phone: 1300 175 010.



Manufactured and packaged for SRGS PTY LTD ABN 23 113 230 050  
6 Coulthards Avenue, Strathpine QLD 4500, Australia



# ToolPRO

## 3000kg Low Profile Garage Jack

### Instruction Manual

COMPLIES WITH CONSUMER GOODS (TROLLEY JACKS)  
SAFETY STANDARD 2017

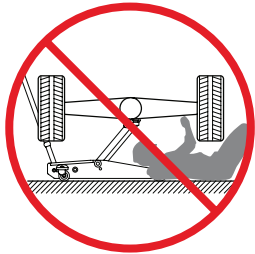
12 MONTH  
WARRANTY



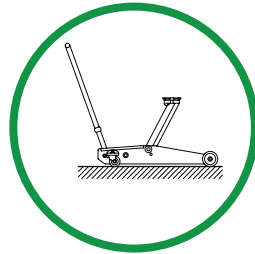
PLU 563849



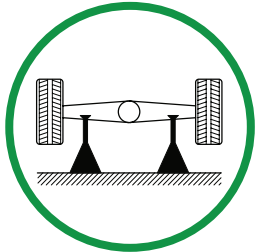
## WARNING



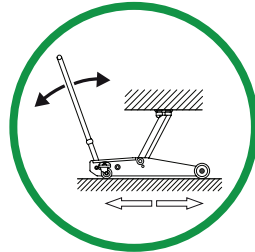
**DEATH OR INJURY  
FROM  
INCORRECT USE**



**FLAT HARD  
LEVEL  
GROUND**



**USE TWO  
SUPPORT  
STANDS**



**FREE TO ROLL  
DURING LIFTING  
AND LOWERING**

**REFER TO VEHICLE  
MANUFACTURER'S  
MANUAL FOR INSTRUCTIONS**

## SAFETY USAGE INSTRUCTIONS

### INSPECTION:

1. Before each use a visual inspection of the jack should be made. This should check for things such as cracks in the welds, leaking oil, any general damage, and loose or missing parts.
2. An annual inspection of the jack is recommended.
3. Do not use if any damage is evident.

- (1) Consult the vehicle manufacture's manual prior to the lifting of the vehicle.
- (2) Conduct a pre-operational check of the equipment.
- (3) Use the hydraulic trolley jack for lifting and lowering only; the raised vehicle should be supported on suitably rated vehicle support stands.
- (4) Use the hydraulic trolley jack on a hard level surface and ensure it is free to roll during lifting and lowering.
- (5) No person should remain in a vehicle that is being lifted.
- (6) Chock the unlifted wheels of the vehicle.
- (7) Centrally locate the load on the head cap.
- (8) Support the vehicle on suitably rated vehicle support stands and remove the hydraulic trolley jack prior to commencement of work on the vehicle.
- (9) No person should get bodily under a vehicle that is supported only by a hydraulic trolley jack.

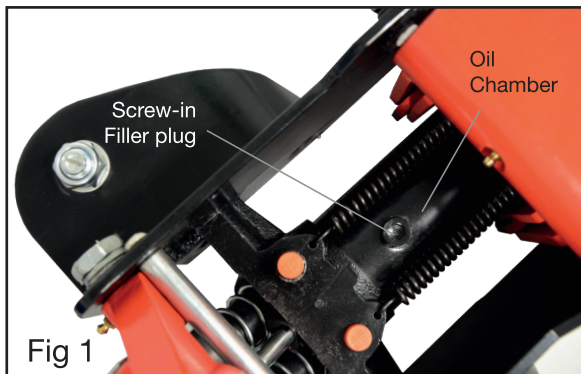
## MAINTENANCE INSTRUCTIONS

### OIL TYPE:

**IMPORTANT:** When adding or replacing oil, always use good grade of low viscosity HYDRAULIC FLUID. (Recommended ISO 32, SAE10 or equivalent). **Avoid** mixing types of fluid. **DO NOT** use Brake Fluid, Alcohol, Glycerine, Detergent, Motor Oil or Dirty Oil.

### ADDING OIL & OIL LEVEL:

1. Set the jack in a horizontal level position and fully lower the head cap. Remove the screw-in filler plug on the oil chamber (Fig. 1).
2. Fill using oil can with a fine spout. The recommended oil capacity is approximately 280ml. If low, add oil as required.
3. Replace the screw-in filler plug on the oil chamber.



### LUBRICATION:

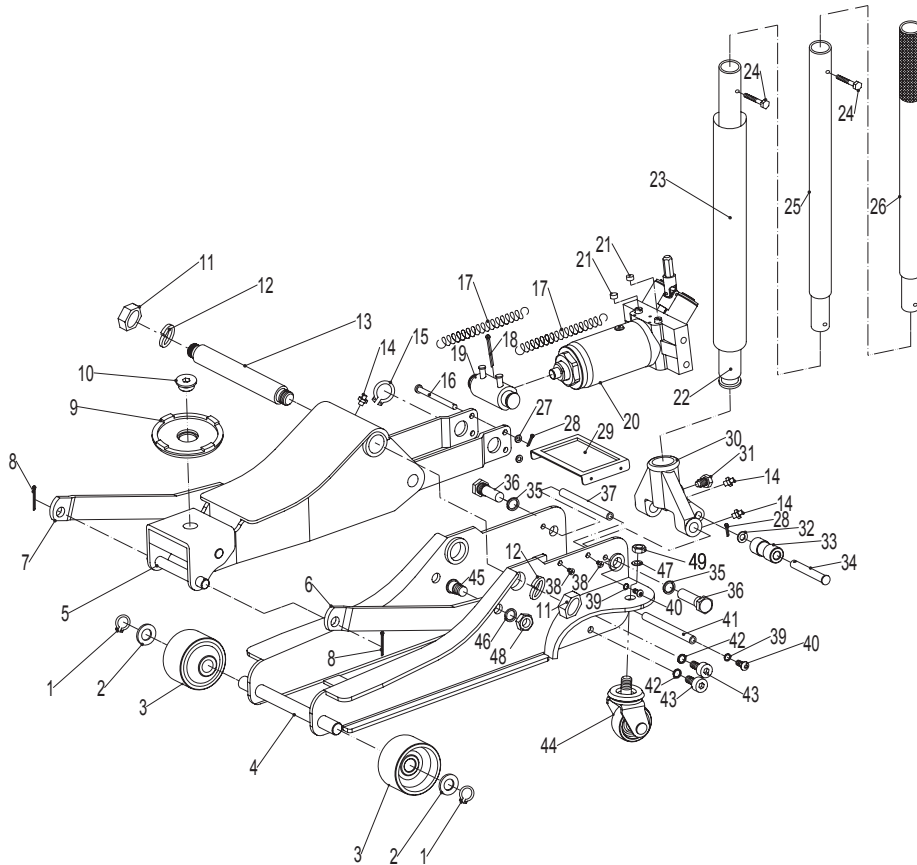
Lubricate all pivoting and moving points with lubricating oil prior to initial use and after every 20 lifting/lowering cycles or 3 months (whichever occurs first) full stop.

### RUST PREVENTION & STORAGE:

1. Check jack every few months for any signs of rust or corrosion. Clean as needed by wiping with an oily cloth.
2. When not in use, always store jack with wheels on horizontal surface and with lifting arm lowered all the way.

Modifications must NOT be carried out or accessories added.

## PARTS LIST



Ref. No.	Qty.	Description	Ref. No.	Qty.	Description
1	2	φ20 Retaining Ring	26	1	Up Handle
2	2	φ20 Flat Washer	27	1	φ8 Flat Washer
3	2	Front Wheel	28	2	φ2.5 x 16 Cotter Pin
4	1	Main Frame	29	1	Cover Plate
5	1	Lift Arm Assembly	30	1	Handle Socket
6	1	Left Link Rod	31	1	M12 Handle Screw
7	1	Right Link Rod	32	1	φ12 Flat Washer
8	2	φ2.5 x 25 Cotter Pin	33	1	Roller
9	1	Head Cap	34	1	Pin For Roller
10	1	The Retaining Bolt	35	2	φ18 Spring Washer
11	2	M24 Thin Nut	36	2	Handle Socket Screw
12	2	φ24 Spring Washer	37	1	Handle Socket Limit Lever
13	1	Lift Arm Shaft	38	4	M5 x 15 Screw
14	3	Grease Nipple	39	4	φ8 Spring Washer
15	2	φ25 Retaining Ring	40	4	M8 x 20 Hex Head Screw
16	1	Short Connecting Rod	41	1	Reinforcing Spindle
17	2	Tension Spring	42	4	φ10 Spring Washer
18	1	φ4 x 45 Cotter Pin	43	4	M10 x 20 Hex Head Screw
19	1	Ram Connecting Rod	44	2	Rear Castor Wheel
20	1	Hydraulic Ram Assembly	45	2	Connecting Rod Pin
21	2	Safety Cover	46	2	φ16 Spring Washer
22	1	Low Handle	47	2	φ16 Flat Washer
23	1	Foam	48	2	M16 Thin Nut
24	2	M6 x 35 Bolt	49	2	M16 Lock Nut
25	1	Middle Handle			

Note: Parts are listed and shown for illustration purpose only. Replacement parts are not available for this product.

## ASSEMBLY INSTRUCTION

### TO ASSEMBLE THE JACK FOR USE:

1. Depress the handle socket with palm of hand, keep fingers clear when removing holding spring (Fig 2).
2. Screw together the 3 parts of the handle.
3. Insert the assembled handle into handle socket on the jack (Fig 3).
4. Secure the handle to the jack with the bolt provided.

Fig 2

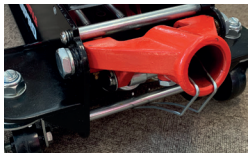
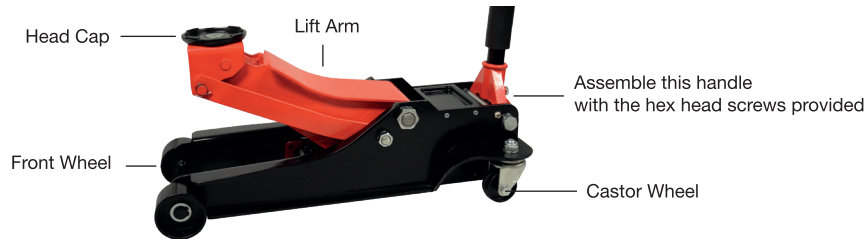
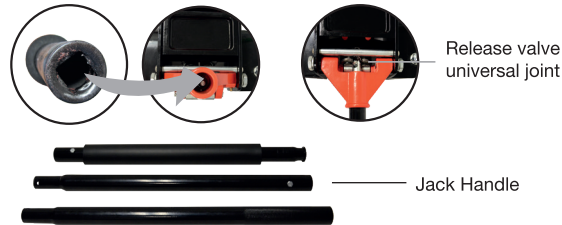


Fig 3



### SPECIFICATIONS

Working Load Limit: 3000kg  
Jack Dimensions: 717 x 346 x 188mm  
Height Lowered: 112mm  
Height Raised: 505mm  
This hydraulic trolley jack is designed to be used with a 108mm diameter head cap, and a three piece handle of 1550mm length.

## OPERATING INSTRUCTIONS

### TO RAISE THE JACK:

1. Place the end of the jack handle over the release valve.
2. Turn the jack handle clockwise until the release valve is closed. Do not over tighten.
3. Chock the wheels of the vehicle with wheel chocks. This will help ensure that the vehicle will remain stable during lifting.
4. Place the jack so the head cap on the lifting arm is directly under the object to be lifted. Please refer to the vehicle manufacturer owner's manual to locate approved lifting points on the vehicle.
5. Insert the handle into the handle socket and pump the jack until the head cap is almost in contact with the vehicle. Check that the head cap will be centrally located at the vehicle manufacturers recommended lifting point.
6. Continue to pump the jack handle to lift the vehicle to the desired height.
7. After lifting the vehicle to the desired height, support the load with an approved pair of vehicle support stands before working under the vehicle.

**CAUTION:** Do not place any part of your body under a vehicle that is not supported by an approved pair of vehicle support stands before working under the vehicle.

### TO LOWER THE JACK:

1. With the jack supporting the weight of the vehicle, remove the vehicle support stands. Please refer to the vehicle manufacturer owner's manual to locate approved lifting points on the vehicle.
2. VERY SLOWLY turn the release valve anti-clockwise using the jack handle. This will open the release valve and the lifting arm will lower.
3. Do not turn the handle too quickly as this may cause damage or injury.

**CAUTION:** Ensure no part of the body or any objects are under the vehicle when lowering the load.

## TROUBLE SHOOTING

POSSIBLE PROBLEMS						POSSIBLE CAUSES AND SOLUTIONS (Refer to operation and maintenance procedures for detailed information)
Jack will not lift load	Jack will lift load, but will not hold	Jack will not lower completely	Poor jack lifting. Pump feels spongy	Jack will not lift to full height	Handle raises by itself when jack is under load	
X						Ensure that the release valve has been turned clockwise to a point at which it is firm/tight.
X	X		X	X	X	Air is trapped in hydraulic system, refer to Air Purge Procedure located on Jack.
X	X		X	X		Oil level is low in jack. Add oil as required.
		X				1. Oil reservoir is over-filled. Drain out some oil. 2. Lubrication of all pivoting and moving parts is necessary.

**Note:** Do not tamper with any part of the Jack as this may lead to serious injury or death.