

WARRANTY

This product is guaranteed against defects for a period of (12 months) from date of purchase. This warranty is provided by SRGS PTY LTD ABN 23 113 230 050 of 751 Gympie Rd Lawnton QLD 4501 Ph (07) 3482 7500. Supercheap Auto will offer a repair, replacement product or store credit if the product is assessed as being defective during the warranty period.

To claim under this warranty, take this product to the Front Service Desk of your nearest Supercheap Auto store. For store locations, visit www.supercheapauto.com.au (AUS) or www.supercheapauto.co.nz (NZ). You will need your receipt or proof of purchase. Additional information may be requested of you to process your claim. Should you not be able to provide proof of purchase with a receipt or a bank statement, identification showing your name, address and signature may be required to process your claim.

This product may need to be sent to the manufacturer to assess the defect before determining any claim. Faults or defects caused by product modification, misuse and abuse, normal wear and tear or failure to follow user instructions are not covered under this warranty.

Our goods come with guarantees that cannot be excluded under the Australian Consumer Law. You are entitled to a replacement or refund for a major failure and for compensation for any other reasonably foreseeable loss or damage. You are also entitled to have the goods repaired or replaced if the goods fail to be of acceptable quality and the failure does not amount to a major failure.

Any expenses incurred relating to the return of this product to store will normally have to be paid by you. For more information contact your nearest Supercheap Auto store. The benefits to the consumer given by this warranty are in addition to other rights and remedies of the Australian Consumer Law in relation to the goods and services to which this warranty relates.



Manufactured and packaged for SRGS PTY LTD ABN 23 113 230 050
751 Gympie Road, Lawnton, Queensland 4501, Australia



1600kg Low Profile Trolley Jack

Instruction Manual

COMPLIES WITH CONSUMER GOODS (TROLLEY JACKS)
SAFETY STANDARD 2017

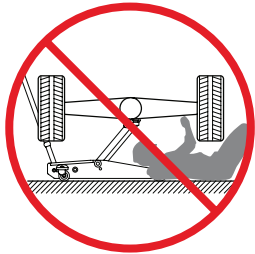
12 MONTH
WARRANTY



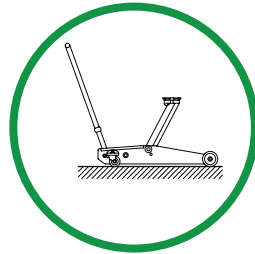
PLU 563848



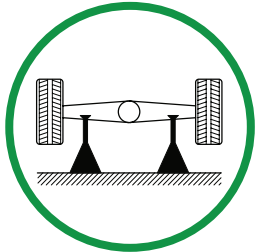
WARNING



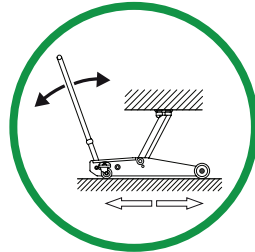
**DEATH OR INJURY
FROM
INCORRECT USE**



**FLAT HARD
LEVEL
GROUND**



**USE TWO
SUPPORT
STANDS**



**FREE TO ROLL
DURING LIFTING
AND LOWERING**

**REFER TO VEHICLE
MANUFACTURER'S
MANUAL FOR INSTRUCTIONS**

SAFETY USAGE INSTRUCTIONS

INSPECTION:

1. Before each use a visual inspection of the jack should be made. This should check for things such as cracks in the welds, leaking oil, any general damage, and loose or missing parts.
2. An annual inspection of the jack is recommended.
3. Do not use if any damage is evident.

- (1) Consult the vehicle manufacture's manual prior to the lifting of the vehicle.
- (2) Conduct a pre-operational check of the equipment.
- (3) Use the hydraulic trolley jack for lifting and lowering only; the raised vehicle should be supported on suitably rated vehicle support stands.
- (4) Use the hydraulic trolley jack on a hard level surface and ensure it is free to roll during lifting and lowering.
- (5) No person should remain in a vehicle that is being lifted.
- (6) Chock the unlifted wheels of the vehicle.
- (7) Centrally locate the load on the head cap.
- (8) Support the vehicle on suitably rated vehicle support stands and remove the hydraulic trolley jack prior to commencement of work on the vehicle.
- (9) No person should get bodily under a vehicle that is supported only by a hydraulic trolley jack.

MAINTENANCE INSTRUCTIONS

OIL TYPE:

IMPORTANT: When adding or replacing oil, always use good grade of low viscosity HYDRAULIC FLUID. (Recommended ISO 32, SAE10 or equivalent). **Avoid** mixing types of fluid. **DO NOT** use Brake Fluid, Alcohol, Glycerine, Detergent, Motor Oil or Dirty Oil.

ADDING OIL & OIL LEVEL:

1. Set the jack in a horizontal level position and fully lower the head cap. Remove the rubber bung on the oil chamber (Fig. 1).
2. Fill using oil can with a fine spout. The recommended oil capacity is approximately 105ml. If low, add oil as required.
3. Replace the rubber bung on the oil chamber.



LUBRICATION:

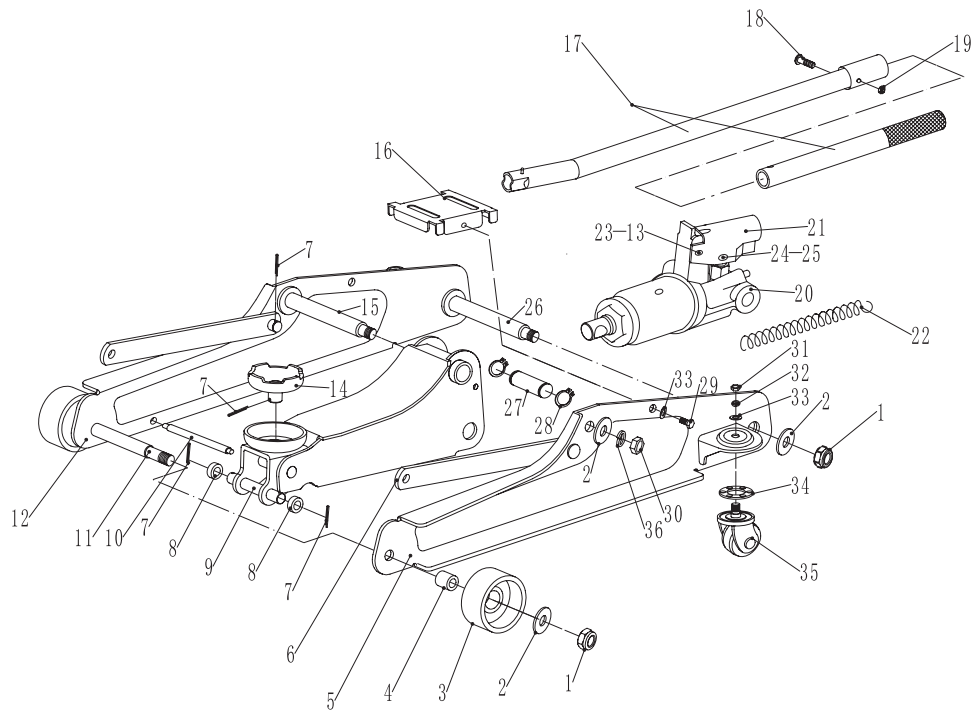
Lubricate all pivoting and moving points with lubricating oil prior to initial use and after every 20 lifting/lowering cycles or 3 months (whichever occurs first) full stop.

RUST PREVENTION & STORAGE:

1. Check jack every few months for any signs of rust or corrosion. Clean as needed by wiping with an oily cloth.
2. When not in use, always store jack with wheels on horizontal surface and with lifting arm lowered all the way.

Modifications must NOT be carried out or accessories added.

PARTS LIST



Ref. No.	Qty.	Description	Ref. No.	Qty.	Description
1	4	M12 Lock Nut	19	1	M6 Lock Nut
2	6	Ø12 Flat Washer	20	1	Hydraulic Ram Assembly
3	2	Front Wheel	21	1	Handle Socket
4	2	Shaft Sleeve	22	1	Tension Spring
5	1	Left Main Frame	23	1	Pin For Handle Socket
6	2	Link Rod	24	1	Pin For Pump Core
7	5	Cotter Pin	25	1	Insert Spring 2
8	2	Baffle Ring	26	1	Spindle
9	1	Lift Arm Assembly	27	1	Ram Connecting Rod
10	1	Front Reinforcing Spindle	28	2	Ø19 Retaining Ring
11	1	Front Wheel Shaft	29	2	M8*14 Bolt
12	1	Right Main Frame	30	2	M12 Nut
13	1	Insert Spring 1	31	2	M8 Hex Nut
14	1	Inner Head Cap	32	2	Ø8 Spring Washer
15	1	Lift Arm Shaft	33	4	Ø8 Flat Washer
16	1	Cover Plate	34	2	Cartridge Holder
17	2	2 Piece Handle	35	2	Rear Castor Wheel
18	1	Hex Head Screw	36	2	Ø12 Spring Washer

Note: Parts are listed and shown for illustration purpose only. Replacement parts are not available for this product.

ASSEMBLY INSTRUCTION

TO ASSEMBLE THE JACK FOR USE:

1. Screw the 2 piece handle together using the hex head screw and lock nut provided.
2. Insert the assembled handle into handle socket on the jack (as shown in Fig 2).

Fig 2



SPECIFICATIONS

Working Load Limit: 1600kg
Jack Dimensions: 560mm x 212mm x 135mm
Height Lowered: 85mm
Height Raised: 375mm
This hydraulic trolley jack is designed to be used with a 54mm diameter head cap, and a handle length of 641mm length.

OPERATION

TO RAISE THE JACK:

1. Place the end of the jack handle over the release valve.
2. Turn the jack handle clockwise until the release valve is closed. Do not over tighten.
3. Chock the wheels of the vehicle with wheel chocks. This will help ensure that the vehicle will remain stable during lifting.
4. Place the jack so the head cap on the lifting arm is directly under the object to be lifted. Please refer to the vehicle manufacturer owner's manual to locate approved lifting points on the vehicle.
5. Insert the handle into the handle socket and pump the jack until the head cap is almost in contact with the vehicle. Check that the head cap will be centrally located at the vehicle manufacturers recommended lifting point.
6. Continue to pump the jack handle to lift the vehicle to the desired height.
7. After lifting the vehicle to the desired height, support the load with an approved pair of vehicle support stands before working under the vehicle.

CAUTION: Do not place any part of your body under a vehicle that is not supported by an approved pair of vehicle support stands before working under the vehicle.

TO LOWER THE JACK:

1. With the jack supporting the weight of the vehicle, remove the vehicle support stands. Please refer to the vehicle manufacturer owner's manual to locate approved lifting points on the vehicle.
2. **VERY SLOWLY** turn the release valve anti-clockwise using the jack handle. This will open the release valve and the lifting arm will lower.
3. Do not turn the handle too quickly as this may cause damage or injury.

CAUTION: Ensure no part of the body or any objects are under the vehicle when lowering the load.

TROUBLE SHOOTING

POSSIBLE PROBLEMS						POSSIBLE CAUSES AND SOLUTIONS (Refer to operation and maintenance procedures for detailed information)
Jack will not lift load	Jack will lift load, but will not hold	Jack will not lower completely	Poor jack lifting. Pump feels spongy	Jack will not lift to full height	Handle raises by itself when jack is under load	
X						Ensure that the release valve has been turned clockwise to a point at which it is firm/tight.
X	X		X	X	X	Air is trapped in hydraulic system, refer to Air Purge Procedure located on Jack.
X	X		X	X		Oil level is low in jack. Add oil as required.
		X				1. Oil reservoir is over-filled. Drain out some oil. 2. Lubrication of all pivoting and moving parts is necessary.

Note: Do not tamper with any part of the Jack as this may lead to serious injury or death.