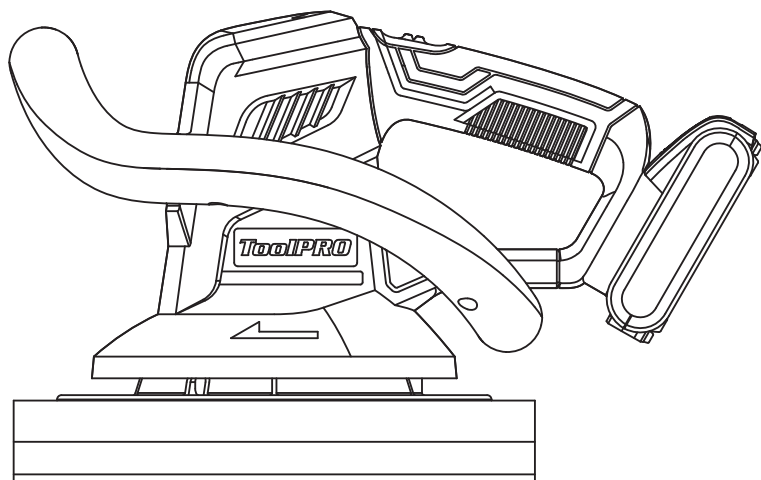


TOOLPRO

18V Cordless Polisher

Instruction Manual

CBP18G



ToolPRO

After Sales Support

FREE CALL 1300 889 028
EMAIL: salesau@positecgroup.com

Important - Please read these instructions fully before operating or maintaining your Cordless Polisher

These instructions contain important information that will help you get the best from your Cordless Polisher, ensuring it remains safe to operate.

If you need help or have damaged or missing parts, call the Customer Helpline on 1300889028

Contents

Safety Information	3
In The Box	10
Accessories	10
Operating Instructions	11
Working hints for your polisher	17
Maintenance	17
Troubleshooting	17
Technical Data	18

Safety Information

Important - Please read these instructions fully before starting assembly

Warning Symbols



To reduce the risk of injury, Please read the instruction manual



Warning



Wear ear protection



Wear eye protection



Wear dust mask



Do not expose to rain or water



Do not burn



Not permitted for face grinding with abrasive cutting off wheels



Li-Ion



Li-Ion

Li-ion battery. This product has been marked with a symbol relating to 'separate collection' for all battery packs and battery pack. It will then be recycled or dismantled in order to reduce the impact on the environment. Battery packs can be hazardous for the environment and for human health since they contain hazardous substances.



RCM marking

ABN: Australian Business Number. By this number, business information such as entity type, status, business location etc. can be found at website <http://abr.business.gov.au>.
ABN of Positec Australia Pty Limited is 14 101 682 357

Safety Information

Important - Please read these instructions fully before starting assembly

General Power Tool Safety Warnings



WARNING! Read all safety warnings and all instructions. Failure to follow the warnings and instructions may result in electric shock, fire and/or serious injury.

Save all warnings and instructions for future reference.

The term "power tool" in the warnings refers to your mains-operated (corded) power tool or battery-operated (cordless) power tool.

1) Work area safety

- a) **Keep work area clean and well lit.** Cluttered or dark areas invite accidents.
- b) **Do not operate power tools in explosive atmospheres, such as in the presence of flammable liquids, gases or dust.** Power tools create sparks which may ignite the dust or fumes.
- c) **Keep children and bystanders away while operating a power tool.** Distractions can cause you to lose control.

2) Electrical safety

- a) **Power tool plugs must match the outlet. Never modify the plug in any way. Do not use any adapter plugs with earthed (grounded) power tools.** Unmodified plugs and matching outlets will reduce risk of electric shock.
- b) **Avoid body contact with earthed or grounded surfaces, such as pipes, radiators, ranges and refrigerators.** There is an increased risk of electric shock if your body is earthed or grounded.
- c) **Do not expose power tools to rain or wet conditions.** Water entering a power tool will increase the risk of electric shock.
- d) **Do not abuse the cord. Never use the cord for carrying, pulling or unplugging the power tool. Keep cord away from heat, oil, sharp edges or moving parts.** Damaged or entangled cords increase the risk of electric shock.
- e) **When operating a power tool outdoors, use an extension cord suitable for outdoor use.** Use of a cord suitable for outdoor use reduces the risk of electric shock.
- f) **If operating a power tool in a damp location is unavoidable, use a residual current device (RCD) protected supply.** Use of an RCD reduces the risk of electric shock.

3) Personal safety

- a) **Stay alert, watch what you are doing and use common sense when operating a power tool. Do not use a power tool while you are tired or under the influence of drugs, alcohol or medication.** A moment of inattention while operating power tools may result in serious personal injury.
- b) **Use personal protective equipment. Always wear eye protection.** Protective equipment such as dust mask, non-skid safety shoes, hard hat, or hearing protection used for appropriate conditions will reduce personal injuries.
- c) **Prevent unintentional starting. Ensure the switch is in the off-position before connecting to power source and/or battery pack, picking up or carrying the tool.** Carrying power tools with your finger on the switch or energising power tools that have the switch on invites accidents.

Safety Information

Important - Please read these instructions fully before starting assembly

General Power Tool Safety Warnings

- d) **Remove any adjusting key or wrench before turning the power tool on.** A wrench or a key left attached to a rotating part of the power tool may result in personal injury.
- e) **Do not overreach. Keep proper footing and balance at all times.** This enables better control of the power tool in unexpected situations.
- f) **Dress properly. Do not wear loose clothing or jewellery. Keep your hair, clothing and gloves away from moving parts.** Loose clothes, jewellery or long hair can be caught in moving parts.
- g) **If devices are provided for the connection of dust extraction and collection facilities, ensure these are connected and properly used.** Use of dust collection can reduce dust-related hazards.

4) Power tool use and care

- a) **Do not force the power tool. Use the correct power tool for your application.**
The correct power tool will do the job better and safer at the rate for which it was designed.
- b) **Do not use the power tool if the switch does not turn it on and off.** Any power tool that cannot be controlled with the switch is dangerous and must be repaired.
- c) **Disconnect the plug from the power source and/or the battery pack from the power tool before making any adjustments, changing accessories, or storing power tools.** Such preventive safety measures reduce the risk of starting the power tool accidentally.
- d) **Store idle power tools out of the reach of children and do not allow persons unfamiliar with the power tool or these instructions to operate the power tool.**
Power tools are dangerous in the hands of untrained users.
- e) **Maintain power tools. Check for misalignment or binding of moving parts, breakage of parts and any other condition that may affect the power tool's operation. If damaged, have the power tool repaired before use.** Many accidents are caused by poorly maintained power tools.
- f) **Keep cutting tools sharp and clean.** Properly maintained cutting tools with sharp cutting edges are less likely to bind and are easier to control.
- g) **Use the power tool, accessories and tool bits etc. in accordance with these instructions, taking into account the working conditions and the work to be performed.** Use of the power tool for operations different from those intended could result in a hazardous situation.

5) Battery tool use and care

- a) **Recharge only with the charger specified by the manufacturer.** A charger that is suitable for one type of battery pack may create a risk of fire when used with another battery pack.
- b) **Use power tools only with specifically designated battery packs.** Use of any other battery packs may create a risk of injury and fire.
- c) **When battery pack is not in use, keep it away from other metal objects, like paper clips, coins, keys, nails, screws or other small metal objects, that can make a connection from one terminal to another.** Shorting the battery terminals together may cause burns or a fire.

Safety Information

Important - Please read these instructions fully before starting assembly

General Power Tool Safety Warnings

- d) **Under abusive conditions, liquid may be ejected from the battery; avoid contact.** If contact accidentally occurs, flush with water. If liquid contacts eyes, additionally seek medical help. Liquid ejected from the battery may cause irritation or burns.
- 6) **Service**
Have your power tool serviced by a qualified repair person using only identical replacement parts. This will ensure that the safety of the power tool is maintained.

Safety instructions for all operations

Safety Warnings Common for Polishing:

- a) **This power tool is intended to function as a polisher. Read all safety warnings, instructions, illustrations and specifications provided with this power tool.** Failure to follow all instructions listed below may result in electric shock, fire and/or serious injury.
- b) **Operations such as grinding, sanding, wire brushing or cutting-off are not recommended to be performed with this power tool.** Operations for which the power tool was not designed may create a hazard and cause personal injury.
- c) **Do not use accessories which are not specifically designed and recommended by the tool manufacturer.** Just because the accessory can be attached to your power tool, it does not assure safe operation.
- d) **The rated speed of the accessory must be at least equal to the maximum speed marked on the power tool.** Accessories running faster than their rated speed can break and fly apart.
- e) **The outside diameter and the thickness of your accessory must be within the capacity rating of your power tool.** Incorrectly sized accessories cannot be adequately guarded or controlled.
- f) **Threaded mounting of accessories must match the grinder spindle thread. For accessories mounted by flanges, the arbour hole of the accessory must fit the locating diameter of the flange.** Accessories that do not match the mounting hardware of the power tool will run out of balance, vibrate excessively and may cause loss of control.
- g) **Do not use a damaged accessory. Before each use inspect the accessory such as tear or excess wear. If power tool or accessory is dropped, inspect for damage or install an undamaged accessory.** After inspecting and installing an accessory, position yourself and bystanders away from the plane of the rotating accessory and run the power tool at maximum no-load speed for one minute.
Damaged accessories will normally break apart during this test time.
- h) **Wear personal protective equipment. Depending on application, use face shield, safety goggles or safety glasses. As appropriate, wear dust mask, hearing protectors, gloves and workshop apron capable of stopping small abrasive or workpiece fragments.** The eye protection must be capable of stopping flying debris generated by various operations. The dust mask or respirator must be capable of filtering particles generated by your operation. Prolonged exposure to high intensity noise may cause hearing loss.
- i) **Keep bystanders a safe distance away from work area. Anyone entering the work**

Safety Information

Important - Please read these instructions fully before starting assembly

Safety Warnings for battery pack

- area must wear personal protective equipment.** Fragments of workpiece or of a broken accessory may fly away and cause injury beyond immediate area of operation.
- j) Never lay the power tool down until the accessory has come to a complete stop.** The spinning accessory may grab the surface and pull the power tool out of your control.
 - k) Do not run the power tool while carrying it at your side.** Accidental contact with the spinning accessory could snag your clothing, pulling the accessory into your body.
 - l) Regularly clean the power tool's air vents.** The motor's fan will draw the dust inside the housing and excessive accumulation of powdered metal may cause electrical hazards.
 - m) Do not operate the power tool near flammable materials.** Sparks could ignite these materials.

Further safety instructions for all operations

Kickback and Related Warnings

Kickback is a sudden reaction to a pinched or snagged rotating wheel, backing pad, brush or any other accessory. Pinching or snagging causes rapid stalling of the rotating accessory which in turn causes the uncontrolled power tool to be forced in the direction opposite of the accessory's rotation at the point of the binding.

For example, if an abrasive wheel is snagged or pinched by the workpiece, the edge of the wheel that is entering into the pinch point can dig into the surface of the material causing the wheel to climb out or kick out. The wheel may either jump toward or away from the operator, depending on direction of the wheel's movement at the point of pinching. Abrasive wheels may also break under these conditions.

Kickback is the result of power tool misuse and/or incorrect operating procedures or conditions and can be avoided by taking proper precautions as given below.

- a) Maintain a firm grip on the power tool and position your body and arm to allow you to resist kickback forces.** Always use auxiliary handle, if provided, for maximum control over kickback or torque reaction during start-up. The operator can control torque reactions or kickback forces, if proper precautions are taken.
- b) Never place your hand near the rotating accessory.** Accessory may kickback over your hand.
- c) Do not position your body in the area where power tool will move if kickback occurs.** Kickback will propel the tool in direction opposite to the wheel's movement at the point of snagging.
- d) Use special care when working corners, sharp edges etc. Avoid bouncing and snagging the accessory.** Corners, sharp edges or bouncing have a tendency to snag the rotating accessory and cause loss of control or kickback.
- e) Do not attach a saw chain woodcarving blade or toothed saw blade.** Such blades create frequent kickback and loss of control.

Safety Warnings Specific for Polishing Operations:

- a) Do not allow any loose portion of the polishing bonnet or its attachment strings to spin freely. Tuck away or trim any loose attachment strings.** Loose and spinning attachment strings can entangle your fingers or snag on the workpiece.

Safety Information

Important - Please read these instructions fully before starting assembly

General Power Tool Safety Warnings

Safety Warnings for battery pack

- a) Do not dismantle, open or shred cells or battery pack.
- b) Do not short-circuit a battery pack. Do not store battery packs haphazardly in a box or drawer where they may short-circuit each other or be short-circuited by conductive materials. When battery pack is not in use, keep it away from other metal objects, like paper clips, coins, keys, nails, screws or other small metal objects, that can make a connection from one terminal to another. Shorting the battery terminals together may cause burns or a fire.
- c) Do not expose battery pack to heat or fire. Avoid storage in direct sunlight.
- d) Do not subject battery pack to mechanical shock.
- e) In the event of battery leaking, do not allow the liquid to come into contact with the skin or eyes. If contact has been made, wash the affected area with copious amounts of water and seek medical advice.
- f) Seek medical advice immediately if a cell or battery pack has been swallowed.
- g) Keep battery pack clean and dry.
- h) Wipe the battery pack terminals with a clean dry cloth if they become dirty.
- i) Battery pack needs to be charged before use. Always refer to this instruction and use the correct charging procedure.
- j) Do not maintain battery pack on charge when not in use.
- k) After extended periods of storage, it may be necessary to charge and discharge the battery pack several times to obtain maximum performance.
- l) Battery pack gives its best performance when it is operated at normal room temperature (20 °C ± 5 °C).
- m) When disposing of battery packs, keep battery packs of different electrochemical systems separate from each other.
- n) Recharge only with the charger specified by POSITEC . Do not use any charger other than that specifically provided for use with the equipment. A charger that is suitable for one type of battery pack may create a risk of fire when used with another battery pack.
- o) Do not use any battery pack which is not designed for use with the equipment.
- p) Keep battery pack out of the reach of children.
- q) Retain the original product literature for future reference.
- r) Remove the battery from the equipment when not in use.
- s) Dispose of properly.

Additional safety instructions for your Battery Charger

- a) Before charging, read the instructions.
- b) For charge Li-ion battery pack only.
- c) Do not charge a leaking battery.
- d) Do not use chargers for works other than those for which they are designed.
- e) Before charging, ensure your charger is matching the local AC supply.
- f) The charging device must be protected from moisture.
- g) Do not use the charging device in the open.
- h) Do not short out the contacts of battery or charger.
- i) Respect the polarity "+/-" when charging.
- j) Do not open the unit and keep out of the reach of children.
- k) Do not charge the batteries of other manufactures or ill-suited models.
- l) Ensure that the connection between the battery charger and battery is correctly



Safety Information

Important - Please read these instructions fully before starting assembly

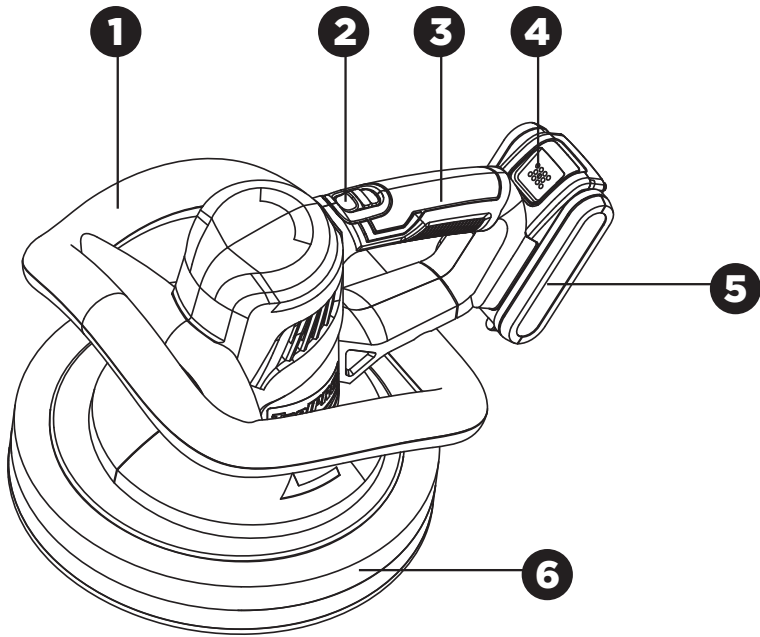
General Power Tool Safety Warnings

- positioned and is not obstructed by foreign bodies.
- m) Keep battery charger's slots are free of foreign objects and protect against dirt and humidity. Store in a dry and frost-free place.
 - n) When charging batteries, ensure that the battery charger is in a well-ventilated area and away from inflammable materials. Batteries can get hot during charging. Do not overcharge any batteries. Ensure that batteries and chargers are not left unsupervised during charging.
 - o) Do not recharge non-rechargeable batteries, as they can overheat and break.
 - p) Longer life and better performance can be obtained if the battery pack is charged when the air temperature is between 18°C and 24°C. Do not charge the battery pack in air temperatures below 4.5°C, or above 40.5°C. This is important as it can prevent serious damage to the battery pack.
 - q) Charge only battery pack of the same model provided by manufacturer and of models recommended by manufacturer.

In The Box

Parts

- ① Perimeter Handle System
- ② On/Off switch
- ③ Soft Grip Handle
- ④ Battery pack release button
- ⑤ Battery pack
- ⑥ Foam Pad Base



Accessories

Charger (ACG18LD3)	1
Battery pack (ABP118G2)	1
Polishing bonnet	1
Applicator bonnet	1

Operating Instructions



NOTE: Before using the tool, read the instruction book carefully.

CHARGING

We strongly recommend to use ToolPRO battery & charger kit. Please contact your local Supercheap Auto store for more details or log onto www.supercheapauto.com.au for Australia or www.supercheapauto.co.nz for New Zealand customers to find out more details.

1. BEFORE PUTTING INTO OPERATION

CHARGING THE BATTERY PACK (SEE FIG. A1,A2)

NOTE:

- a) **The battery in your new tool is not charged when it leaves the plant. Therefore it must be full charged before using the first time.**
- b) Do not use any charger other than that specifically provided for use with the equipment.
- c) If the battery pack is very hot you must remove your battery pack from the charger and allow time for the battery to cool down before recharging.
- d) Please charge the battery to reach full or no less than half charge before storage. If the tool will not be used for long periods of time, charge the battery every 3-6 months.

2. CHARGING PROCEDURE

- a) Plug the charger into an appropriate outlet.
- b) Place the battery pack into the charger
- c) When charging is completed, unplug the charger and remove the battery pack.

Note: If the battery pack is locked in the charger, press the battery pack release button and remove it.







WARNING: When battery charge runs out after continuous use or exposure to direct sunlight or heat, allow time for the battery to cool down before re-charging to achieve the full charge.



Operating Instructions

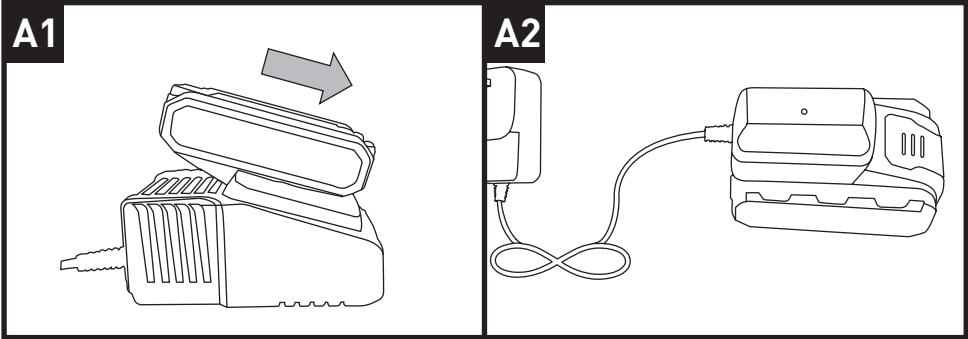
3. CHARGING INDICATOR

a) Fast charger (See fig. A1)

Light	ON/OFF flash	Status
Red on 	————	Charging
Red flash 	- - - - -	Defective Battery
Green on 	————	Fully Charged
Green flash 	- - - - -	Hot/Cold Delay

b) Slow charger (See fig. A2)

Light	ON/OFF flash	Status
Green flash 	- - - - -	Charging
Green on 	————	Fully Charged



Operating Instructions

4. TO REMOVE AND INSTALL THE BATTERY PACK (See Fig. B1, B2)

Depress the Battery Pack Release Button firmly first and then slide the Battery Pack out from your tool to remove the battery pack (SEE FIG. B1). After recharge, insert the battery pack into the tool's battery port. A simple push and slight pressure will be sufficient (SEE FIG. B2).

OPERATION

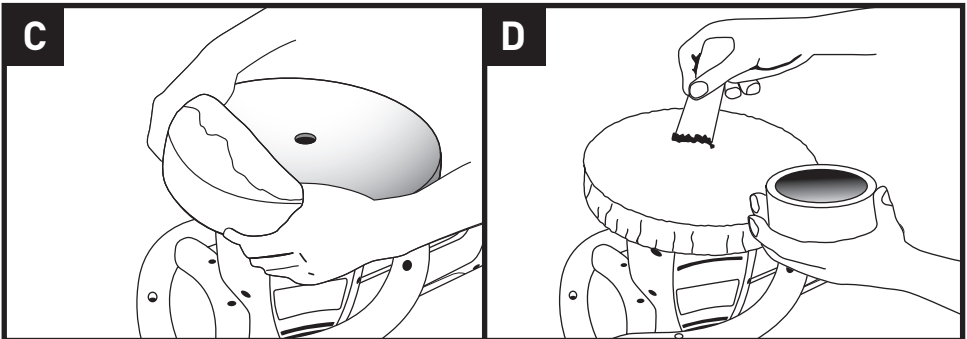
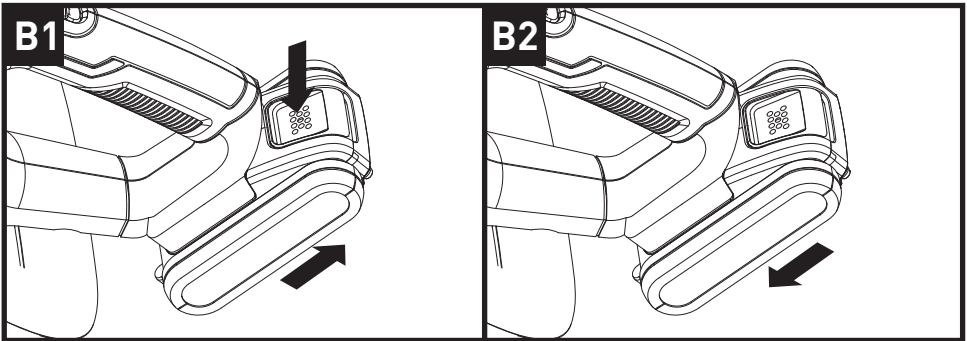
1. ATTACHING THE WAX APPLICATOR BONNET TO THE FOAM PAD (See Fig. C)

- Place wax applicator bonnet on foam pad as shown in Fig. C.
- Always make sure that the elastic strip on the bottom of the bonnet is securely tucked under the underside of the foam pad.

2. APPLYING SOLID WAX (Not provided) TO BONNET (See Figures D)

IMPORTANT: DO NOT APPLY WAX DIRECTLY ON CAR!

Spread a heaping teaspoon of wax evenly over entire surface of applicator bonnet using a putty knife (Not provided) or any other flat object (See Fig. D).



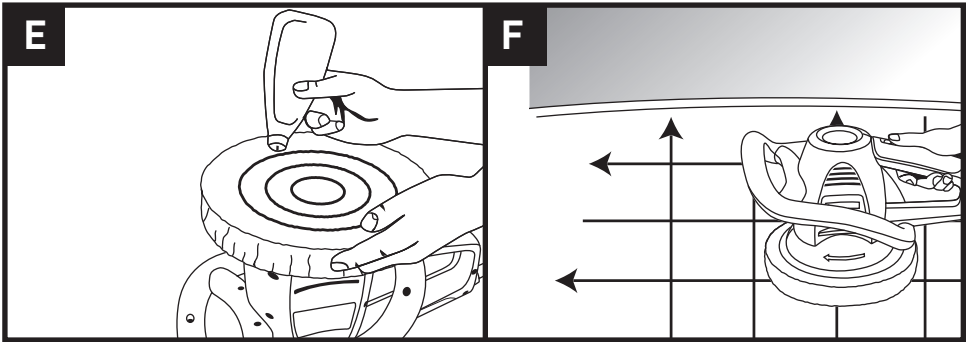
Operating Instructions

3. APPLYING LIQUID WAX (NOT PROVIDED) TO BONNET (See Figure E)

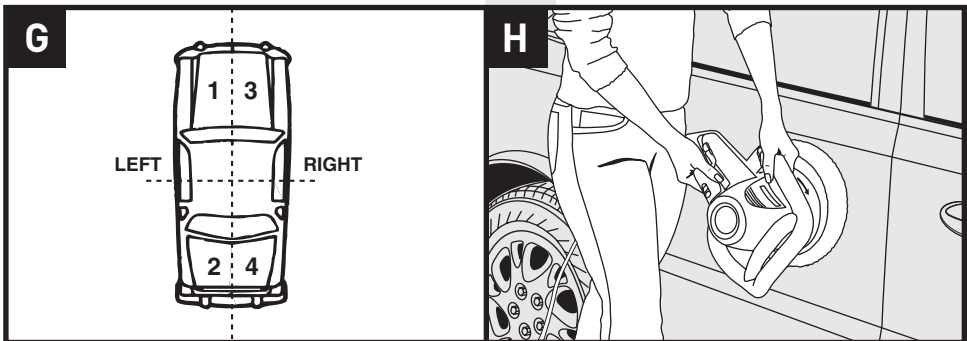
- Apply three swirls of wax over applicator bonnet (See Fig. E).
- This should be enough to cover 1/4 of car surface.
- For the second and third and fourth applications, only use about one half as much as on first application. The bonnet will not absorb as much wax on these applications.

4. RUNNING YOUR POLISHER AND WAXING VEHICLE

- To avoid splashing wax, ALWAYS start and stop the polisher against the surface to be polished.
- Place polisher against vehicle and turn polisher ON by sliding switch to On position.
- Apply wax in a straight line with either a side-to-side or back and forth motion(See Fig. F). Always use broad, even strokes when applying wax.




- Start applying wax to the flat surfaces (hood, trunk and roof) first. Wax one section at a time (see Fig. G).
- After flat surfaces are covered with wax, do the sides. The perimeter handle system allows easy polishing of horizontal and vertical surfaces. (see Fig. H).
- Apply wax in a thin, even coat. Too much wax does not add any more protection and only makes the wax removal more difficult.



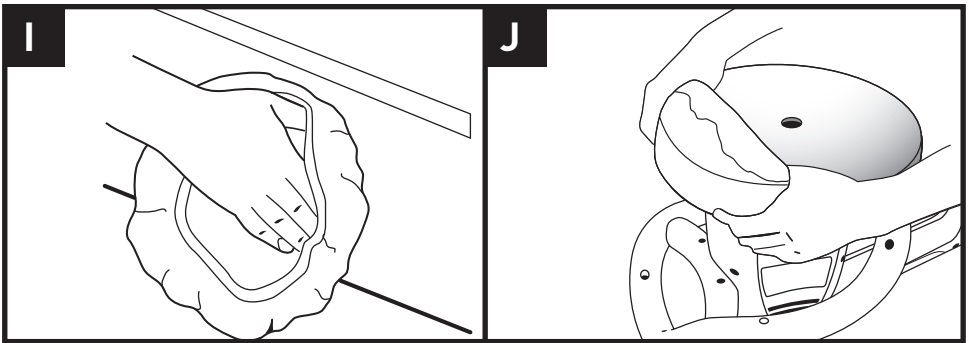
Operating Instructions

- g) The random orbit motion of the polisher provides an application that cannot be duplicated, not even "by hand".
IMPORTANT: DO NOT apply excessive pressure against the work surface with this tool. The random orbital motion feature on this tool will perform better when less pressure is applied. Applying excessive pressure will slow the random orbital motion and reduce the effectiveness of the tool.
- h) It is easiest to apply the wax to the entire surface before starting the removal phase; however, follow the specific recommendations of the wax or polish being used.
- i) When you have finished applying wax with the applicator bonnet, SHUT OFF the polisher before removing from the car's surface.
- j) You can use the applicator pad included with the polisher to hand wax all the hard-to-reach surfaces (under bumpers, around door handles, etc.), or remove the wax applicator bonnet and use it to hand polish all the hard-to-reach surfaces (See Fig. I).
- k) Properly dispose of wax applicator bonnet.

5. ATTACHING THE POLISHING BONNET TO THE FOAM PAD (See Fig. J)

 **WARNING:** When changing accessories, BE SURE that the switch is in the OFF position and the battery pack has been removed.

- a) Place the terry bonnet on foam pad as shown in Fig. J.
- b) Always make sure that the elastic strip on the bottom of the bonnet is securely tucked on the underside of the foam pad.



Operating Instructions

6. POLISHING - REMOVING THE WAX FROM THE SURFACE (See Fig. K)

NOTE: Remove wax in the same order in which it was applied.

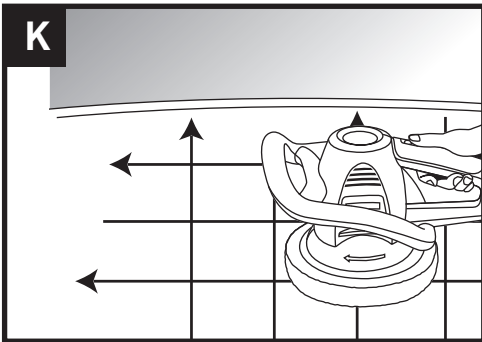
- a) Wait until wax has dried to an even haze on vehicle.
- b) Place polisher against vehicle and turn polisher ON by sliding switch to On position.

IMPORTANT: DO NOT apply excessive pressure against the work surface with this tool.

The random orbital motion feature on this tool will perform better when less pressure is applied. Applying excessive pressure will slow the random orbital motion and reduce the effectiveness of the tool.

NOTE: For best results, use long, sweeping strokes in a criss-cross pattern when removing wax.

- c) Buff and polish the entire surface until all dried wax is removed. Remove the bonnet from time to time and shake out the dried wax residue. A bonnet with excess residue will cause streaking. You may need to replace the bonnet with a new one if you can't get it clean enough to avoid streaking.
- d) Use a clean terry cloth bonnet for final buffing and polishing, or use the polishing bonnet for the ultimate "showroom" shine.



7. CAR CARE TIPS

Always follow the directions of the Polish/Wax or any Chemicals as indicated on their instructions. Each product, brand will differ in their applications and is critical that this followed. Do not use with Hand Only application products.

Working hints for your polisher

1. At all times, let the polisher do the work-do not force it or apply excessive pressure to the polisher. Preferably, use a light circular motion. Pressing too hard will slow down the machine's movement and affect the quality of the work.
2. The most common error, however, is applying too much wax. If pad absorbs too much wax, it will not last as long, and polishing is more difficult and takes longer.

Maintenance





Your power tool requires no additional lubrication or maintenance. There are no user serviceable parts in your power tool. Never use water or chemical cleaners to clean your power tool. Wipe clean with a dry cloth. Always store your power tool in a dry place. Keep the motor ventilation slots clean. Keep all working controls free of dust. Occasionally you may see sparks through the ventilation slots. This is normal and will not damage your power tool.

Troubleshooting

1. The battery pack gets warm when charging. This is normal, it's a result of the stepping down of the chemical reactions inside the batteries during the charging process.
2. If the polisher does not abrade surface, check the bonnet. If the bonnet has been worn, replace the new bonnet and try again.
3. If a fault can not be rectified, return the tool to an authorized dealer for repair.

Technical Data

Technical Data Table

Voltage		18 V 		
No load speed		2800/min		
Pad size		Ø240mm		
Battery capacity		2.0Ah		
Machine weight		2.28kg(Not include battery)		
Charging time		1.5Ah battery	2.0Ah battery	4.0Ah battery
	400mA charger (HYCH0102000400S)	3-5hrs	5-7hrs	10-12hrs
	1.5A Charger (ACG18LD)	60min	80min	160min
	3.0A Charger (ACG18LD3)	40min	60min	120min
Charger Input		100-240V~50/60Hz		
Charger Output		10.8--20V  400mA by slow charger 10.8--20V  1.5A by 1.5A fast charger 14.4--20V  3.0A by 3.0A fast charger		
Applicable battery		1.5/2.0/4.0Ah Li-ion battery		

Staple your purchase receipt here
Before returning this product for
warranty or any other reason, please call.
POSITEC AUSTRALIA PTY LIMITED
ABN 14 101 682 357
Unit 15, 23 Narabang Way Belrose 2085 NSW Australia
FREE CALL 1300 889 028
EMAIL:salesau@positecgroup.com

