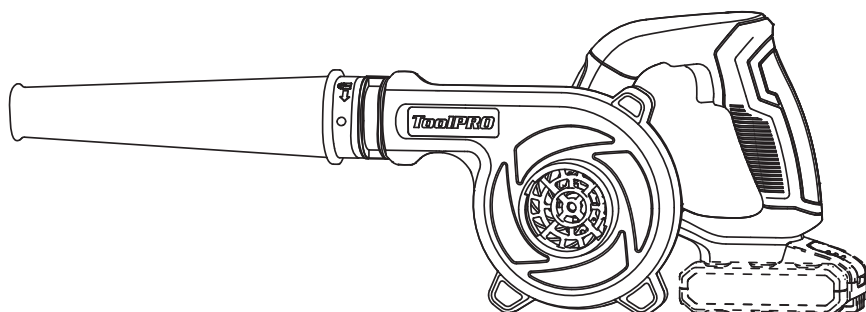


TOOLPRO

18V Lithium workshop blower

Instruction Manual

CBV18G.9



After Sales Support

FREE CALL 1300 889 028
EMAIL: salesau@positecgroup.com

Important - Please read these instructions fully before operating or maintaining your Blower

These instructions contain important information that will help you get the best from your Blower, ensuring it remains safe to operate.

If you need help or have damaged or missing parts, call the Customer Helpline on 1300 889 028

Contents

Safety Information.....	3
In The Box.....	10
Operating Instructions.....	11
Maintenance.....	14
Trouble shooting	15
Technical data.....	15

Safety Information

Important - Please read these instructions fully before starting assembly

Warning Symbols



WARNING: Read the operator's manual



Wear eye protection



Do not use in the rain or leave outdoors while it is raining.



SWITCH OFF: Remove plug from mains before cleaning or maintenance.



Warning of hazard



Keep bystanders away.



For indoor use only(only for charger)



Read the operator's manual.



Positive terminal



Negative terminal



Do not burn



Do not expose to rain or water



Li-Ion battery. This product has been marked with a symbol relating to 'separate collection' for all battery packs and battery pack. It will then be recycled or dismantled in order to reduce the impact on the environment. Battery packs can be hazardous for the environment and for human health since they contain hazardous substances.

Li-Ion



Li-Ion



Fuse



RCM marking

ABN: Australian Business Number. By this number, business information such as entity type, status, business location etc. can be found at website <http://abr.business.gov.au>.
ABN of Positec Australia Pty Limited is 14 101 682 357

Safety Information

Important - Please read these instructions fully before starting assembly

General Power Tool Safety Warnings



WARNING! Read all safety warnings and all instructions. Failure to follow the warnings and instructions may result in electric shock, fire and/or serious injury.

Save all warnings and instructions for future reference.

The term "power tool" in the warnings refers to your mains-operated (corded) power tool or battery-operated (cordless) power tool.

1) Work area safety

- a) **Keep work area clean and well lit.** Cluttered or dark areas invite accidents.
- b) **Do not operate power tools in explosive atmospheres, such as in the presence of flammable liquids, gases or dust.** Power tools create sparks which may ignite the dust or fumes.
- c) **Keep children and bystanders away while operating a power tool.** Distractions can cause you to lose control.

2) Electrical safety

- a) **Power tool plugs must match the outlet. Never modify the plug in any way. Do not use any adapter plugs with earthed (grounded) power tools.** Unmodified plugs and matching outlets will reduce risk of electric shock.
- b) **Avoid body contact with earthed or grounded surfaces, such as pipes, radiators, ranges and refrigerators.** There is an increased risk of electric shock if your body is earthed or grounded.
- c) **Do not expose power tools to rain or wet conditions.** Water entering a power tool will increase the risk of electric shock.
- d) **Do not abuse the cord. Never use the cord for carrying, pulling or unplugging the power tool. Keep cord away from heat, oil, sharp edges or moving parts.** Damaged or entangled cords increase the risk of electric shock.
- e) **When operating a power tool outdoors, use an extension cord suitable for outdoor use.** Use of a cord suitable for outdoor use reduces the risk of electric shock.
- f) **If operating a power tool in a damp location is unavoidable, use a residual current device (RCD) protected supply.** Use of an RCD reduces the risk of electric shock.

3) Personal safety

- a) **Stay alert, watch what you are doing and use common sense when operating a power tool. Do not use a power tool while you are tired or under the influence of drugs, alcohol or medication.** A moment of inattention while operating power tools may result in serious personal injury.
- b) **Use personal protective equipment. Always wear eye protection.** Protective equipment such as dust mask, non-skid safety shoes, hard hat, or hearing protection used for appropriate conditions will reduce personal injuries.
- c) **Prevent unintentional starting. Ensure the switch is in the off-position before connecting to power source and/or battery pack, picking up or carrying the tool.** Carrying power tools with your finger on the switch or energising power tools that have the switch on invites accidents.

Safety Information

Important - Please read these instructions fully before starting assembly

General Power Tool Safety Warnings

- d) **Remove any adjusting key or wrench before turning the power tool on.** A wrench or a key left attached to a rotating part of the power tool may result in personal injury.
 - e) **Do not overreach. Keep proper footing and balance at all times.** This enables better control of the power tool in unexpected situations.
 - f) **Dress properly. Do not wear loose clothing or jewellery. Keep your hair, clothing and gloves away from moving parts.** Loose clothes, jewellery or long hair can be caught in moving parts.
 - g) **If devices are provided for the connection of dust extraction and collection facilities, ensure these are connected and properly used.** Use of dust collection can reduce dust-related hazards.
- 4) Power tool use and care**
- a) **Do not force the power tool. Use the correct power tool for your application.**
The correct power tool will do the job better and safer at the rate for which it was designed.
 - b) **Do not use the power tool if the switch does not turn it on and off.** Any power tool that cannot be controlled with the switch is dangerous and must be repaired.
 - c) **Disconnect the plug from the power source and/or the battery pack from the power tool before making any adjustments, changing accessories, or storing power tools.** Such preventive safety measures reduce the risk of starting the power tool accidentally.
 - d) **Store idle power tools out of the reach of children and do not allow persons unfamiliar with the power tool or these instructions to operate the power tool.**
Power tools are dangerous in the hands of untrained users.
 - e) **Maintain power tools. Check for misalignment or binding of moving parts, breakage of parts and any other condition that may affect the power tool's operation. If damaged, have the power tool repaired before use.** Many accidents are caused by poorly maintained power tools.
 - f) **Keep cutting tools sharp and clean.** Properly maintained cutting tools with sharp cutting edges are less likely to bind and are easier to control.
 - g) **Use the power tool, accessories and tool bits etc. in accordance with these instructions, taking into account the working conditions and the work to be performed.** Use of the power tool for operations different from those intended could result in a hazardous situation.
- 5) Battery tool use and care**
- a) **Recharge only with the charger specified by the manufacturer.** A charger that is suitable for one type of battery pack may create a risk of fire when used with another battery pack.
 - b) **Use power tools only with specifically designated battery packs.** Use of any other battery packs may create a risk of injury and fire.
 - c) **When battery pack is not in use, keep it away from other metal objects, like paper clips, coins, keys, nails, screws or other small metal objects, that can make a connection from one terminal to another.** Shorting the battery terminals together may cause burns or a fire.

Safety Information

Important - Please read these instructions fully before starting assembly

General Power Tool Safety Warnings

- d) **Under abusive conditions, liquid may be ejected from the battery; avoid contact.** If contact accidentally occurs, flush with water. If liquid contacts eyes, additionally seek medical help. Liquid ejected from the battery may cause irritation or burns.
- 6) **Service**
Have your power tool serviced by a qualified repair person using only identical replacement parts. This will ensure that the safety of the power tool is maintained.

Additional safety warnings for cordless Blower



WARNING: Read all safety warnings and all instructions. Failure to follow the warnings and instructions may result in electric shock, fire and/or serious injury.

Save all warnings and instructions for future reference.

- This appliance is not intended for use by persons (including children) with reduced physical, sensory or mental capabilities, or lack of experience and knowledge, unless they have been given supervision or instruction concerning use of the appliance by a person responsible for their safety.
- Children should be supervised to ensure that they do not play with the appliance.

The device is designed only for the blowing of dry leaves in private households and as a hobby device in the garden. Any other utilization, which is not explicitly approved in these directions, can lead to damage to the device and represent a serious danger to the user.

- The device is designed for use by adults. Young people over 16 years may use the device under supervision only.
- The use of the device in the rain or in a humid environment is forbidden.
- The manufacturer is not liable for damage which is caused through inappropriate use or incorrect operation.

NOTE: Do not employ and low power machines for heavy work. DO NOT use your device for purposes for which it has not been designed.



WARNING: To reduce the risk of injury, user must read and understand instruction manual.

1) Training

- a) Read the instructions carefully. Be familiar with the controls and the proper use of the appliance;
- b) Never allow children to use the appliance.
- c) Never allow people unfamiliar with these instructions to use the appliance. Local regulations may restrict the age of the operator;
- d) Never operate the appliance while people, especially children, or pets are nearby;
- e) The operator or user is responsible for accidents or hazards occurring to other people or their property.

2) Preparation

- a) While operating the appliance, always wear substantial footwear and long trousers. Do not operate the equipment when barefoot or wearing open sandals;

Safety Information

Important - Please read these instructions fully before starting assembly

Additional safety warnings for cordless Blower

- b) Do not wear loose clothing or jewellery that can be drawn into the air inlet. Keep long hair away from the air inlets.
- c) Wear protective goggles while operating
- d) To prevent dust irritation the wearing of a face mask is recommended
- e) Never operate the appliance with defective guards or shields, or without safety devices

3) Operation

- a) Take off the battery from the appliance,
 - when not in use;
 - before clearing a blockage;
 - before checking, cleaning or working on the appliance;
 - if the appliance starts to vibrate abnormally.
- b) Operate the appliance only in daylight or in good artificial light.
- c) Do not overreach and keep your balance at all times.
- d) Always be sure of your footing on slopes.
- e) Walk, never run;
- f) Keep all cooling air inlets clear of debris.
- g) Never blow debris in the direction of bystanders.
- h) Do not put hands or feet near or under rotating parts.

4) Maintenance and storage

- a) Keep all nuts, bolts and screws tight to be sure the appliance is in safe working condition;
- b) Replace worn or damaged parts.
- c) Use only genuine replacement parts and accessories.
- d) Store the appliance only in a dry place.

Safety Warnings for battery pack

- a) **Do not dismantle, open or shred cells or battery pack.**
- b) **Do not short-circuit a battery pack. Do not store battery packs haphazardly in a box or drawer where they may short-circuit each other or be short-circuited by conductive materials. When battery pack is not in use, keep it away from other metal objects, like paper clips, coins, keys, nails, screws or other small metal objects, that can make a connection from one terminal to another. Shorting the battery terminals together may cause burns or a fire.**
- c) **Do not expose battery pack to heat or fire. Avoid storage in direct sunlight.**
- d) **Do not subject battery pack to mechanical shock.**
- e) **In the event of battery leaking, do not allow the liquid to come into contact with the skin or eyes. If contact has been made, wash the affected area with copious amounts of water and seek medical advice.**
- f) **Seek medical advice immediately if a cell or battery pack has been swallowed.**
- g) **Keep battery pack clean and dry.**
- h) **Wipe the battery pack terminals with a clean dry cloth if they become dirty.**
- i) **Battery pack needs to be charged before use. Always refer to this instruction and use the correct charging procedure.**
- j) **Do not maintain battery pack on charge when not in use.**

Safety Information

Important - Please read these instructions fully before starting assembly

Additional safety warnings for cordless Blower

- k) After extended periods of storage, it may be necessary to charge and discharge the battery pack several times to obtain maximum performance.
- l) Battery pack gives its best performance when it is operated at normal room temperature (20 °C ± 5 °C).
- m) When disposing of battery packs, keep battery packs of different electrochemical systems separate from each other.
- n) Recharge only with the charger specified by Manufacturer. Do not use any charger other than that specifically provided for use with the equipment. A charger that is suitable for one type of battery pack may create a risk of fire when used with another battery pack.
- o) Do not use any battery pack which is not designed for use with the equipment.
- p) Keep battery pack out of the reach of children.
- q) Retain the original product literature for future reference.
- r) Remove the battery from the equipment when not in use.
- s) Dispose of properly.

General Safety Warnings



WARNING! Read all safety warnings and all instructions. Failure to follow the warnings and instructions may result in electric shock, fire and/or serious injury.

Save all warnings and instructions for future reference.

- This appliance is not intended for use by persons (including children) with reduced physical, sensory or mental capabilities, or lack of experience and knowledge, unless they have been given supervision or instruction concerning use of the appliance by a person responsible for their safety.

- Children should be supervised to ensure that they do not play with the appliance.

If the supply cord is damaged, it must be replaced by the manufacturer, its service agent or similarly qualified persons in order to avoid a hazard.

Additional safety instructions for your Battery Charger

1. Before charging, read the instructions.
2. For charge Li-ion battery pack only.
3. Do not charge a leaking battery.
4. Do not use chargers for works other than those for which they are designed.
5. Before charging, ensure your charger is matching the local AC supply.
6. The charging device must be protected from moisture.
7. Do not use the charging device in the open.
8. Do not short out the contacts of battery or charger.
9. Respect the polarity "+/-" when charging.
10. Do not open the unit and keep out of the reach of children.
11. Do not charge the batteries of other manufactures or ill-suited models.
12. Ensure that the connection between the battery charger and battery is correctly positioned and is not obstructed by foreign bodies.
13. Keep battery charger's slots are free of foreign objects and protect against dirt and humidity. Store in a dry and frost-free place.

Safety Information

Important - Please read these instructions fully before starting assembly

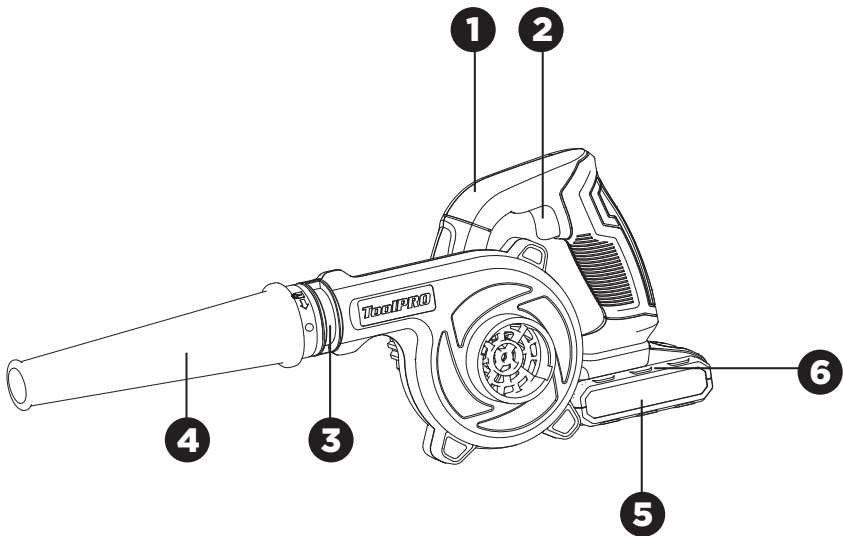
General safety warnings

14. When charging batteries, ensure that the battery charger is in a well-ventilated area and away from inflammable materials. Batteries can get hot during charging. Do not overcharge any batteries. Ensure that batteries and chargers are not left unsupervised during charging.
15. Do not recharge non-rechargeable batteries, as they can overheat and break.
16. Longer life and better performance can be obtained if the battery pack is charged when the air temperature is between 18°C and 24°C. Do not charge the battery pack in air temperatures below 4.5°C, or above 40.5°C. This is important as it can prevent serious damage to the battery pack.
17. Charge only battery pack of the same model provided by manufacturer and of models recommended by manufacturer.

In The Box

Parts

- ① Handle
- ② On/off switch
- ③ Blower Port
- ④ Blower nozzle
- ⑤ Battery pack*(Sold separately)
- ⑥ Battery pack release button*



Operating Instructions

Charging



NOTE: Before using the tool, read the instruction book carefully.

1. CHARGING

We strongly recommend to use ToolPRO battery & charger kit. Please contact your local Supercheap Auto store for more details or log onto www.supercheapauto.com.au for Australia or www.supercheapauto.co.nz for New Zealand customers to find out more details.

BEFORE PUTTING INTO OPERATION

CHARGING THE BATTERY PACK (SEE FIG. A1,A2)

NOTE:

- a) **The battery in your new tool is not charged when it leaves the plant. Therefore it must be full charged before using the first time.**
- b) Do not use any charger other than that specifically provided for use with the equipment.
- c) If the battery pack is very hot you must remove your battery pack from the charger and allow time for the battery to cool down before recharging.
- d) Please charge the battery to reach full or no less than half charge before storage. If the tool will not be used for long periods of time, charge the battery every 3-6 months.

CHARGING PROCEDURE

- 1) Plug the charger into an appropriate outlet.
- 2) Place the battery pack into the charger
- 3) When charging is completed, unplug the charger and remove the battery pack.

Note: If the battery pack is locked in the charger, press the battery pack release button and remove it.







WARNING: When battery charge runs out after continuous use or exposure to direct sunlight or heat, allow time for the battery to cool down before re-charging to achieve the full charge.

Operating Instructions



Charging

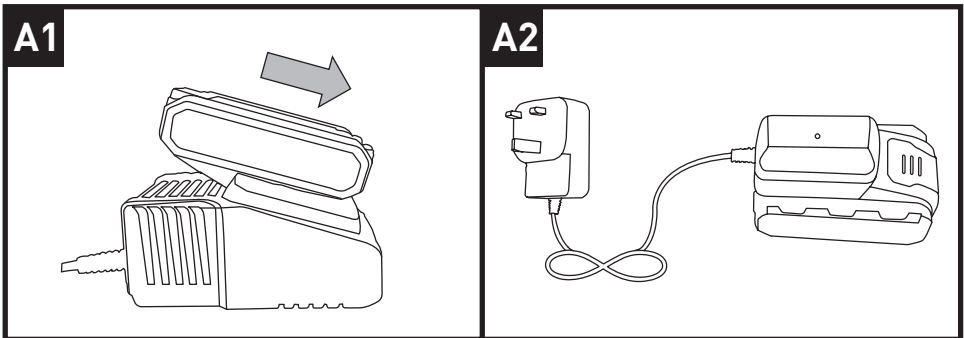
CHARGING INDICATOR

1、 Fast charger(See fig. A1)

Light	ON/OFF flash	Status
Red on ● 	————	Charging
Red flash 	- - - - -	Defective Battery
Green on ● 	————	Fully Charged
Green flash 	- - - - -	Hot/Cold Delay

2、 Slow charger(See fig. A2)

Light	ON/OFF flash	Status
Green flash ● 	- - - - -	Charging
Green on ● 	————	Fully Charged




Operating Instructions

Assembly

1. ASSEMBLING THE BLOWER TUBE (SEE FIG B1,B2)

- 1) Align the tab (a) on the Blower Tube (4) with the indentation (b) on the Blower Port (3) and attach the Blower Tube on Blower Port.(See Fig B1)
- 2) Then slightly rotate the tube until it locks into position as shown in Fig.B2. Make sure the blower tube is firmly assembled.

 **WARNING:** Do not attempt to operate or disassemble the safety switch by any means other than the normal assembly.

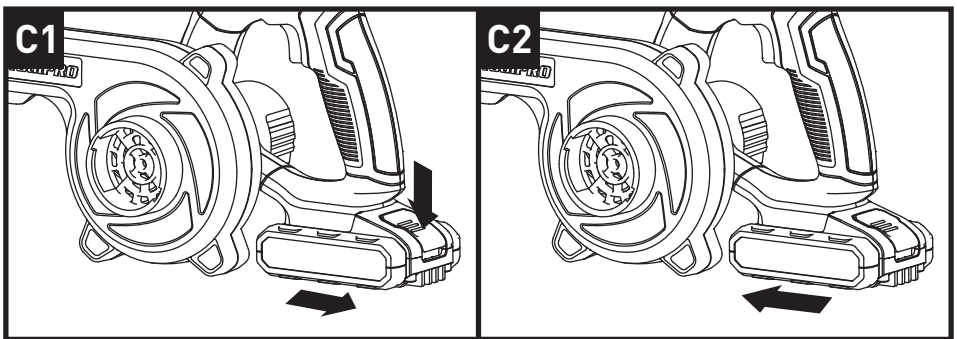
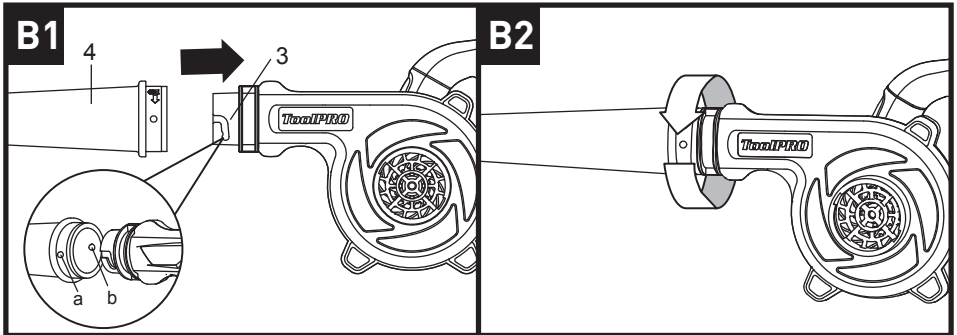
2. INSTALLING AND REMOVING THE BATTERY PACK (not supplied)

a) TO REMOVE THE BATTERY PACK (SEE FIG C1)

Press the Battery Pack Release Button firmly first and then slide the Battery Pack out from your tool.

b) TO INSTALL THE BATTERY PACK (SEE FIG C2)

Slide the fully charged Battery Pack onto the tool with sufficient force until it clicks into position.



Operating Instructions

Operation

1. SWITCHING ON AND OFF (SEE FIG D)

Press the On/off Switch (2) to switch on.

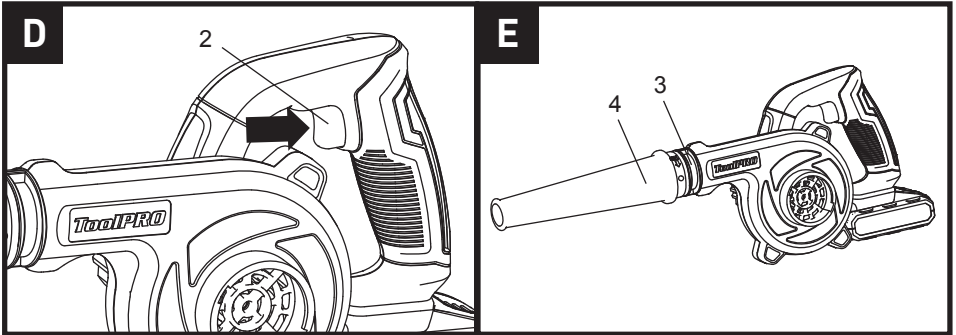
Release the On/off Switch to switch off.

⚠ WARNING! The tool runs for approximately 5 seconds after it has been switched off. Let the motor come to a complete standstill before setting the tool down.

2. BLOWING (SEE FIG E)

When use for blowing, attach the Blower Tube (4) to the Blower Port (3).

⚠ WARNING! Flying debris can cause serious personal injury to the operator, bystanders or pets. Keep bystanders and pets at least 5m away from the area of work and always wear suitable eye and ear protection, long pants and sturdy shoes or boots whilst operating the tool.



Maintenance

1. Store the tool, instruction manual and accessories in a secure, dry place. In this way you will always have the information ready.
2. Keep the tool's air vents unclogged and clean at all times.
3. Remove dust and dirt regularly. Cleaning is best done with a rag or brush.
4. Never use caustic agents to clean plastic parts.






CAUTION: Do not use cleaning agents to clean the plastic parts of the tool. A mild detergent on a damp cloth is recommended. Water must never come into contact with the tool.

Trouble shooting

Problem	Possible cause	Fault correction
Device does not start	Mains voltage is not present	Check the battery pack, charger, where appropriate, repair through electrical specialist
	Defective on/off switch	Repair through customer service
	Defective motor	
Device works with interruptions	Damaged battery pack	Check the battery pack, replace it
	Internal loose connection	Repair through customer service
	Defective on/off switch	

Technical data

Technical Data Table

Voltage		18 V 		
No load speed		12500 /min		
Blower speed		60MPH		
Weight		1.49 kg(Including battery)		
Charger Protection class		 /II		
Charging time		1.5Ah battery	2.0Ah battery	4.0Ah battery
	400mA charger (HYCH0102000400S)	3-5hrs	5-7hrs	10-12hrs
	1.5A Charger (ACG18LD)	60min	80min	160min
	3.0A Charger (ACG18LD3)	40min	60min	120min
Charger Input		100-240V-50/60Hz		
Charger Output		10.8--20V  400mA by slow charger 10.8--20V  1.5A by 1.5A fast charger 14.4--20V  3.0A by 3.0A fast charger		
Battery capacity		1.5/2.0/4.0Ah Li-ion battery		

Staple your purchase receipt here
Before returning this product for
warranty or any other reason, please call.
POSITEC AUSTRALIA PTY LIMITED
ABN 14 101 682 357
Unit 15, 23 Narabang Way Belrose 2085 NSW Australia
FREE CALL 1300 889 028
EMAIL:salesau@positecgroup.com

