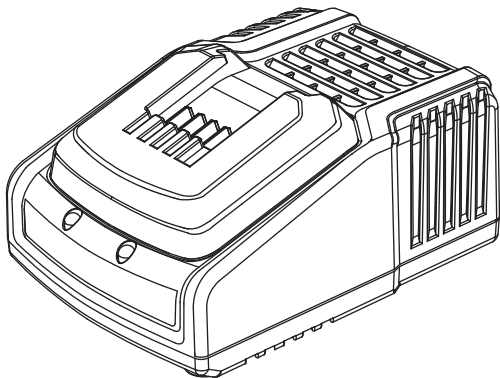


TOOLPRO Battery Charger

Instruction Manual

ACG18LD ACG18LD3



After Sales Support

FREE CALL 1300 889 028

EMAIL: salesau@positecgroup.com

Important - Please read these instructions fully before operating or maintaining your Battery Charger

These instructions contain important information that will help you get the best from your battery charger, ensuring it remains safe to operate.
If you need help or have damaged or missing parts, call the Customer Helpline on 1300 889 028

Contents

Safety Information.....	3
In The Box.....	5
Charging Procedure.....	6
Troubleshooting	7
Maintenance.....	8
Technical Data.....	8

Safety Information

Important - Please read these instructions fully before starting assembly

Warning Symbols



To reduce the risk of injury, Please read the instruction manual



Warning



For indoor use only



Fuse

T 2A time lag fuse with rated current of 2A



Positive terminal



Negative terminal



Double insulation



RCM marking

ABN: Australian Business Number. By this number, business information such as entity type, status, business location etc. can be found at website <http://abr.business.gov.au>.
ABN of Positec Australia Pty Limited is 14 101 682 357

Safety Information

Important - Please read these instructions fully before starting assembly

General Power Tool Safety Warnings



WARNING! Read all safety warnings and all instructions. Failure to follow the warnings and instructions may result in electric shock, fire and/or serious injury.

Save all warnings and instructions for future reference.

This appliance can be used by children aged from 8 years and above and persons with reduced physical, sensory or mental capabilities or lack of experience and knowledge if they have been given supervision or instruction concerning use of the appliance in a safe way and understand the hazards involved. Children shall not play with the appliance. Cleaning and user maintenance shall not be made by children without supervision. If the supply cord is damaged, it must be replaced by the manufacturer, its service agent or similarly qualified persons in order to avoid a hazard.

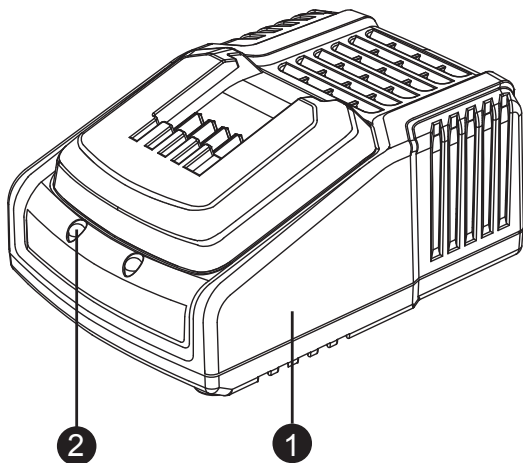
Additional safety instructions for your Battery Charger

1. Before charging, read the instructions.
2. For charge ToolPRO ABP118G1 ABP118G2 battery pack only.
3. Do not charge a leaking battery.
4. Do not use chargers for works other than those for which they are designed.
5. Before charging, ensure your charger matches the local AC supply.
6. The charging device must be protected from moisture.
7. Do not use the charging device in the open.
8. Do not short out the contacts of battery or charger.
9. Respect the polarity "+/-" when charging.
10. Do not open the unit and keep out of the reach of children.
11. Ensure that the connection between the battery charger and battery is correctly positioned and is not obstructed by foreign bodies.
12. Keep battery charger's slots free of foreign objects and protect against dirt and humidity. Store in a dry and frost-free place.
13. When charging batteries, ensure that the battery charger is in a well-ventilated area and away from inflammable materials. Batteries can get hot during charging. Do not overcharge any batteries. Ensure that batteries and chargers are not left unsupervised during charging.
14. Do not recharge non-rechargeable batteries, as they can overheat and break.
15. Longer life and better performance can be obtained if the battery pack is charged when the air temperature is between 18°C and 24°C. Do not charge the battery pack in air temperatures below 4.5°C, or above 40.5°C. This is important as it can prevent serious damage to the battery pack.
16. Charge only battery pack of the same model provided by manufacturer and of models recommended by manufacturer.

In The Box

Parts

- ① Charger Base
- ② Charge Indicator Light



Charging Procedure



NOTE: Before using the tool, read the instruction book carefully.

BEFORE PUTTING INTO OPERATION

A) CHARGING THE BATTERY

The battery charger supplied is matched to the Li-Ion battery listed in this manual. Do not use another battery charger.

The Li-Ion battery is protected against deep discharging. When the battery is empty, the tool is switched off by means of a protective circuit: The tool holder no longer rotates.

In a warm environment or after heavy use, the battery pack may become too hot to permit charging. Allow time for the battery to cool down before recharging.

When the battery pack is charged for the first time and after prolonged storage, the battery pack will accept a 100% charge after several charge and discharge cycles.

B) TO REMOVE THE BATTERY PACK (SEE FIG A1)

Press the Battery Pack Release Button firmly first and then slide the Battery Pack out from your tool.

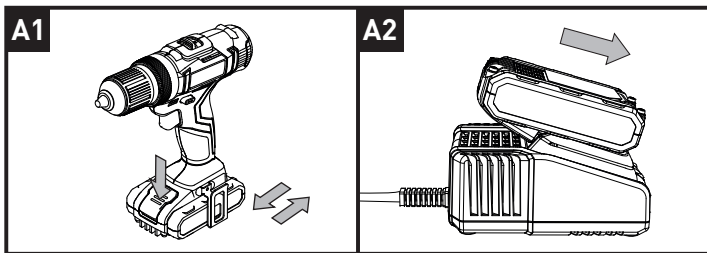
C) HOW TO CHARGE YOUR BATTERY PACK (SEE FIG A2)

Charging procedure

- 1) Plug the charger into an appropriate outlet. The light will be green.
- 2) Slide the battery pack into the charger, the light will turn to red to indicate the charging process has started.
- 3) When charging is completed, the light will turn to green. The pack is now fully charged, unplug the charger and remove the battery pack.







WARNING: When battery charge runs out after continuously use or exposure to direct sunlight or heat, allow time for the tool to cool down before re-charging to achieve the full charge.



Charging Procedure

CHARGING INDICATOR

This charger is designed to detect some problems that can arise with battery packs. Indicator lights indicate problems (see table below). If this occurs, insert a new battery pack to determine if the charger is OK. If the new battery charges correctly, then the original pack is defective and should be returned to a service center or recycling service center. If the new battery pack displays the same problem as the original Battery Pack, have the charger tested at an authorized service center.

Light	ON/OFF flash	Status
Red on 	—————	Charging
Red flash 	- - - - -	Defective Battery
Green on 	—————	Fully Charged
Green flash 	- - - - -	Hot/Cold Delay

Troubleshooting

1. I CANNOT FIT THE BATTERY INTO THE BATTERY CHARGER.WHY?

Check if the charger and the battery pack are specifically designed for working together.

2. REASONS FOR DIFFERENT CHARGING TIMES.

- 1) If the battery pack is only partly discharged it may be re-charged in less than 3 hours.
- 2) If the battery pack and ambient temperature are very cold then recharging may take more hours.
- 3) If the battery pack is very hot you must remove your battery pack from the charger and allow your battery pack to cool first to ambient temperature and then recharging can be started.

NOTE: The charging time can be affected by many reasons which do not indicate defects in your product. Remove the plug from the socket before carrying out any adjustment, servicing or maintenance.

Maintenance

Remove the plug from the socket before carrying out any adjustment, servicing or maintenance.

Your battery charger requires no additional lubrication or maintenance. Never use water or chemical cleaners to clean your charger. Wipe clean with a dry cloth. Always store your charger in a dry place.

If the supply cord is damaged, it must be replaced by the manufacturer, its service agent or similarly qualified persons in order to avoid a hazard.

Technical Data

Technical Data Table

Charger Input	100-240V~50/60Hz,42W(ACG18LD)
	100-240V~50/60Hz,78W(ACG18LD3)
Charger Output	10.8--20V 1500mA(ACG18LD)
	14.4--20V 3.0A(ACG18LD3)
Machine weight	0.34 kg

Our universal charger ACG18LD/ACG18LD3 for ToolPRO 1.5Ah, 2.0Ah, 4.0Ah battery

Battery model	Capacity	Charging time		No. Of Battery cells
		ACG18LD	ACG18LD3	
ABP118G1	18V-1.5Ah	60min	40min	5
ABP118G2	18V- 2.0Ah	80min	60min	5
ABP118L4	18V- 4.0Ah	160min	120min	10

**Staple your purchase receipt here
Before returning this product for
warranty or any other reason, please call.**

**POSITEC AUSTRALIA PTY LIMITED
ABN 14 101 682 357**

**Unit 15, 23 Narabang Way Belrose 2085 NSW Australia
FREE CALL 1300 889 028**

EMAIL:salesau@positecgroup.com

