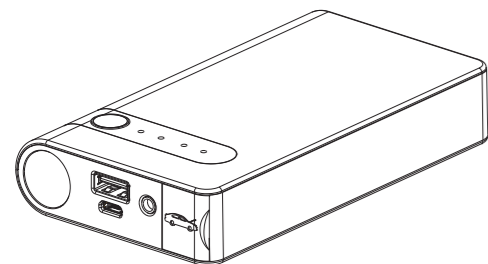
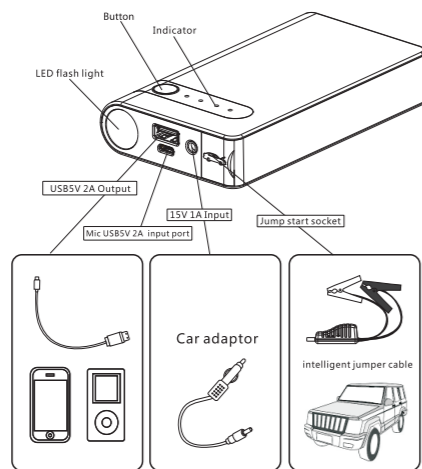




SCA7800 USER MANUAL



PRODUCT LAYOUT



OPERATING INSTRUCTIONS

Charge Level Indicator

Press the button on the front of the unit, the LED lights illuminated indicate the state of charge as per the table below:

Indicator	1 Flashing	1 solid	2 solid	3 solid	4 solid
Storage Level	0%	25%	50%	75%	100%

When charging, the LEDs will illuminate sequentially to indicate the current charge level. When charging is complete, all lights will turn off.

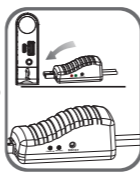
This manual contains important information regarding the safe operation of this product. Please read it carefully and retain it with the product.

Part No: SCA7800
Model No: Epower-03(B)
PLU: 524202

Jump Starting Instructions (12V Vehicle Only)

Note: Before attempting to start the vehicle, make sure the jump starter is sufficiently charged to attempt a jump start.

- 1 Connect the BLUE plug of the Intelligent Jumper Cable leads firmly to the jump start socket of the jump starter.
- 2 Connect the Black clamp to the Negative (-) battery terminal. Connect the RED clamp to the Positive (+) battery terminal.
- 3 Check the indicator light on the INTELLIGENT JUMPER CABLE and match to one of the following conditions;



WARNING! DO NOT ATTEMPT TO CRANK THE VEHICLE FOR MORE THAN 5 SECONDS. WAIT AT LEAST 2 MINUTES BETWEEN CRANKING ATTEMPTS

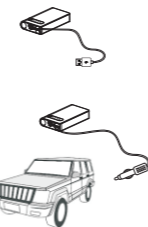
- A) GREEN LIGHT ON:** The connection is correct and the protections are engaged. Attempt to start the vehicle.
- B) GREEN LIGHT FLASHING, AUDIBLE BEEPING:** The vehicle battery is very low. Press the "BOOST" button and wait for the flashing green light to stop flashing and stay lit green. Attempt to start the vehicle within 30 seconds before unit switches off.
- C) RED LIGHT ON, AUDIBLE BEEPING:** The clamps connected to the vehicle battery are in reversed polarity. Check connections and make sure the RED clamp is connected to the Positive terminal (+) and the Black clamp is connected to the Negative terminal (-). Wait for solid Green light to indicate correct connection, then attempt to start the vehicle.
- D) NO LIGHTS ON, NO AUDIBLE BEEPING:** The vehicle battery may be damaged. Check INTELLIGENT JUMPER CABLE is firmly connected to the jump starter. Check the INTELLIGENT JUMPER CABLE clamps are connected to the correct battery terminals. After confirming connections, press the "BOOST" button and wait for Green light to illuminate. If the Green light is on, attempt to start the vehicle. If the Green light is not on, contact either roadside assistance, a mechanic or an auto-electrician. DO NOT ATTEMPT TO START THE VEHICLE.

- 4 When the vehicle has been successfully started, remove the clamps from the vehicle battery as soon as possible. Once the jump starter is removed, leave the engine running in order to recharge the vehicle battery.

Jump Starter Charging Instructions

Charging via USB cable

- 1 Plug the USB charging cable into any working USB output port
- 2 Insert the Micro USB connector into the 5V2A input port on the jump starter



Charging Via Car Adapter

- 1 Plug the car adaptor lead into the 12V Power Socket (Cigarette Lighter Socket)
- 2 Insert the other end of the car adaptor lead into the 15V 1A input port on the jump starter



Charging Instructions for Mobile Devices (Phone/Tablet etc)

- 1 Plug the device charging lead into the USB 5V/2A output port of the jump starter.
- 2 Connect the charging lead into the portable device (Phone/ Tablet etc)
- 3 Press the button on the front of the jump starter and charging will start.

Note; Charge level indicator lights will be illuminated while device is charging, showing the remaining charge level of the jump starter.

LED Torch Instructions

Press and hold the button on the front of the jump starter to turn on the LED Torch. Briefly press the button again to cycle through the different torch modes: Torch, Strobe, SOS and Off.

PARTS LIST

#	Part Name	Qty
1	Jump Starter	1
2	Device Charging Cable	1
3	Car Adaptor	1
4	Intelligent Jumper Cable	1
5	User Manual	1

TECHNICAL SPECIFICATIONS

Dimensions	131 x 75 x 25mm
Weight	300g
Battery Capacity	7800mAh (28.86Wh)
Output	5VDC 2Amp, 12VDC Jump Start
Input	15VDC 1Amp, 5VDC 2Amp
Full Charging Time	3 hours for 15VDC 1Amp, 5 hours for 5VDC 2Amp
Starting Current	200Amp
Peak Current	400Amp
Operating Temperature	-20C to 60C

FAQ'S

- Q** How do I turn off the jump starter?
A The jump starter will automatically turn off when charging is complete or it senses no activity for a short period of time.
- Q** How long does it take to charge the jump starter?
A Between 3 to 5 hours via the USB 5VDC 2Amp input.
- Q** How many times can the jump starter charge my phone?
A If the jump starter is fully charged, it should charge an iPhone6 three times.
- Q** How many times will the jump starter start a car per full charge?
A Approximately 10 times for a small petrol engine. This will change depending on engine size and condition.
- Q** How long will the jump starter retain its charge when not in use?
A Depending on environmental conditions, up to 12 months, but it will slowly lose charge over this time. We highly recommend recharging after each use, and charging every three months when not in use.

TROUBLESHOOTING

Problem	Solution
No lights come on when the "On/Test" button is pressed.	The jump starter is completely flat and the low voltage protection is engaged. Recharge the jump starter – See Charging Instructions section.
The jump starter is connected to the vehicle correctly, and the green light is on steady, but the car won't start.	You will need to talk to a roadside assistance group, a mechanic or an auto electrician, as the problem in your vehicle is not a flat battery. There are many reasons that a vehicle may not start, the jump starter is only designed to assist with a flat battery, not a damaged battery or mechanical issue.

WARNINGS

- 1) Always make sure the blue plug of the intelligent jumper cable is firmly inserted into the jump starter. Failure to make a proper connection can generate a large amount of heat at this connection, potentially melting the blue plug.
- 2) Always check the intelligent jumper cable clamps are well connected to the vehicle battery terminals, in the correct polarity. Make sure the vehicle battery terminals are clean of dirt, rust, sulphation and grease. Failure to make a good connection will prevent the jump starter from being able to deliver enough energy to start the vehicle.
- 3) Always let the jump starter cool down for at least two minutes between attempts at starting a vehicle, and do not attempt to start the vehicle more than 3 times. Failure to observe this instruction may damage the jump starter, and will void your warranty.
- 4) DO NOT CONNECT THE INTELLIGENT JUMPER CABLE CLAMPS TOGETHER! This can result in a short circuit, sparks, heat and will damage the jump starter. This will void your warranty.

- 5) Do not disassemble the jump starter. Incorrect handling of the contents can cause a short circuit, and this will void your warranty.

- Always be careful when using this device
- This device is not a toy, and is not intended to be operated by children
- Do not get the jump starter wet, or submerge in water
- Do not operate the jump starter in any environment where there is a chance of flammable gasses, liquids or other materials
- Do not store in any environment capable of exceeding 70 degrees Celsius
- Only charge the device in an environment between 0 and 40 degrees Celsius
- Charge the device only with the supplied equipment
- Under extreme conditions or if damaged, battery leakage may occur. Avoid contact with skin, clean using a cloth and wearing gloves. If contact occurs with skin or eyes, rinse immediately with water and seek medical attention
- At the end of the jump starter service life, please discard with care for the environment. The device contains recyclable materials and can be disposed of at most battery recycling points.

WARRANTY INFORMATION

"Our goods come with guarantees that cannot be excluded under the Australian Consumer Law. You are entitled to a replacement or refund for a major failure and for compensation for any other reasonably foreseeable loss or damage. You are also entitled to have the goods repaired or replaced if the goods fail to be of acceptable quality and the failure does not amount to a major failure."

Manufactured and packaged for SRGS PTY LTD ABN 23 113 230 050
751 Gympie Road, Lawnton, Queensland 4501, Australia