



NCP-MIR43

USER MANUAL

# CLIP ON REVERSE MIRROR MONITOR & CAMERA PACK



4.3" LCD SCREEN



GRIDLINES



170° FOV



REVERSE ACTIVATED

Thank you for purchasing NanoCam Plus' 4.3" Reverse Mirror Monitor & Camera Pack. We are certain that our product will give you trouble-free operation while providing you with a safety feature that enhances your driving experience. Our products, like most after-market safety enhanced devices, are designed to assist and aid the driver, not to replace the manual function of the person operating the vehicle.

For the latest manual and product updates, please visit our website at [www.nanocamplus.com.au](http://www.nanocamplus.com.au) or [www.nanocamplus.co.nz](http://www.nanocamplus.co.nz)

## **Disclaimer**

NanoCam Plus' NCP-MIR43 4.3" Reverse Mirror Monitor & Camera Pack is designed as a driver assistance device. Although this is a visual aid and will allow you to view what is behind the vehicle, it does not remove the responsibility of driving the vehicle from the driver. The legal responsibility and safe driving practise remains with the driver at all times. You have purchased this product with the understanding that its use is as an aid only. We highly recommend that you have this product professionally installed to ensure that it will provide the functions it is set out to perform.

## NCP-MIR43 Component List & Package Contents:

- Mirror Monitor
- Camera
- 6M AV cable
- Power Cable
- Camera connection cable



## Important Notice

1. Please read this manual carefully before using the product.
2. This unit is for vehicles with 12v DC only.
3. 12V IGN/ACC Power wiring connections **MUST** be made to a 12V ignition feed. (Refer to Wiring Diagram on Page 4)
4. Route wiring harness away from heat sources and electrical components.
5. Wire connection points should be insulated
6. Please install this unit in a professional manner
7. Please perform tests after finishing the installation.
8. Specifications subject to change without prior notice.

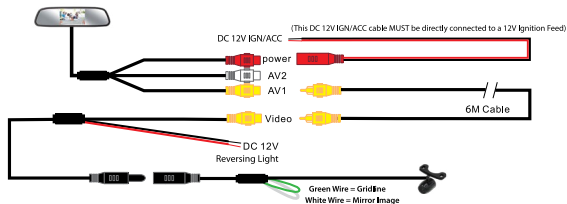
### Specifications (Mirror Monitor)

**Display:** 4.3" (16:9 Ratio diagonal length)  
**Power:** ≤3W  
**Power supply:** 9-13V DC  
**Resolution:** 480(W)\*R.G.B.\*272(H)  
PAL/NTSC compatible  
2 AV inputs (allows up to two cameras)  
Auto activation upon reverse gear engagement  
Adjustable brightness

### Specifications (Camera)

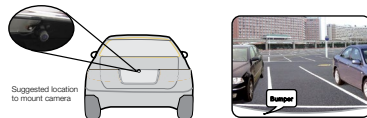
**Resolution:** 420 TV Lines  
**Effective pixels:** PAL = 648 x 520  
648 x 488  
**NTSC:**  
**Power supply:** 9 – 16V DC  
**Operating Temperature:** -20°C – +70°C  
**Horizontal Angle:** 170° degrees  
**Water-proof rating:** IP68  
**Minimum Illumination:** 0.5 Lux  
Normal to Mirror image switching  
Grid-line switching

## Wiring Diagram

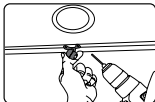


## Camera Installation - Butterfly Mount

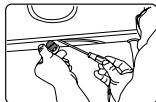
1. Select a flat and centred location near the number plate lamp at the rear of the vehicle to mount camera.



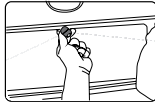
**IMPORTANT:** When selecting this location it is highly recommended that the image transmitted by the camera show the rear bumper and area behind the vehicle.



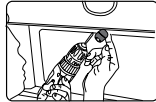
2. Attach tape to the bracket of the camera, and drill a small hole for the first screw.



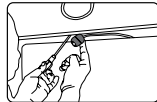
3. Use a screw driver to fix the first screw, but don't tighten it yet.



4. Insert camera wire through newly drilled hole and mount securely in place.



5. Mark the position suitable for the second screw and drill a small hole for it.



6. Fix the second screw and tighten both screws.

## Installing the Mirror

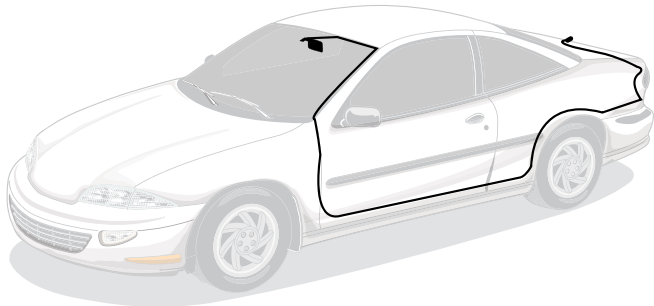
1. Place the cable over the front of the mirror so that it does not get caught between the mirror monitor and your vehicles rear view mirror during installation.
2. Place the clips on the top of the mirror monitor on the top of your rear view mirror.
3. Place your thumbs on the front of the mirror monitor to hold the unit in place, and use your index fingers to push the bottom clips down over the bottom of the mirror.
4. Push the mirror monitor in to place ensuring that the monitor is secure.

## Installation Diagram

### Testing

#### How to Test:

1. Apply the parking brakes.
2. Turn Ignition on. (PLEASE DO NOT START VEHICLE)
3. Shift into reverse gear.
4. Image should appear on the mirror monitor.



### Trouble Shooting

Problem	Solution
"No Signal" appears while reversing	1. Check video input connections 2. Check camera power connections
Video image is not sharp	Check camera lens for debris

### Maintenance

Always keep camera clear from dirt and mud. Clean camera with a soft moist cloth.

## Warranty Terms & Conditions

Our goods come with guarantees that cannot be excluded under the Australian & New Zealand Consumer Law. You are entitled to a replacement or refund for a major failure and for compensation for any other reasonably foreseeable loss or damage. You are also entitled to have the goods repaired or replaced if the goods fail to be of acceptable quality and the failure does not amount to a major failure.

This warranty is provided in addition to your rights under the Australian & New Zealand Consumer Law.

NanoCam Plus warrants that this product is free from defects in material and workmanship for a period of 12 months from the date of purchase or for the period stated on the packaging. This warranty is only valid where you have used the product in accordance with any recommendations or instructions provided by NanoCam Plus.

This warranty excludes defects resulting from alterations of the product, accident, misuse, abuse or neglect.

In order to claim the warranty, you must return the product to the retailer from which it was purchased or if that retailer is part of a National network, a store within that chain, along with satisfactory proof of purchase. The retailer will then return the goods to NanoCam Plus. NanoCam Plus will repair, replace or refurbish the product at its discretion. The retailer will contact you when the product is ready for collection. All costs involved in claiming this warranty, including the cost of the retailer sending the product to NanoCam Plus, will be borne by you.

**NanoCam Plus Address:** 44 Translink Drive, Keilor Park Victoria Australia 3042

**Ph:** +61 03 8331 4800

**Email:** [info@nanocamplus.com.au](mailto:info@nanocamplus.com.au)

YOUR **SAFETY** OUR **PRIORITY**™



[www.nanocamplus.com.au](http://www.nanocamplus.com.au)  
[www.nanocamplus.co.nz](http://www.nanocamplus.co.nz)

