



NCP-DRM50

USER MANUAL

5" REVERSE MONITOR & CAMERA PACK



5" DISPLAY



GRIDLINES



170° FOV



DUAL INPUTS

Thank you for purchasing NanoCam Plus' 5" Monitor & Camera Pack. We are certain that our product will give you trouble-free operation while providing you with a safety feature that enhances your driving experience. Our products, like most after-market safety enhanced devices, are designed to assist and aid the driver, not to replace the manual function of the person operating the vehicle.

For the latest manual and product updates, please visit our website at www.nanocamplus.com.au or www.nanocamplus.co.nz

Disclaimer

NanoCam Plus' NCP-DRM50 5" Monitor & Camera Pack rear-view system is designed as a driver assistance device. Although this is a visual aid and will allow you to view what is behind the vehicle, it does not remove the responsibility of driving the vehicle from the driver. The legal responsibility and safe driving practise remains with the driver at all times. You have purchased this product with the understanding that its use is as an aid only. We highly recommend that you have this product professionally installed to ensure that it will provide the functions it is set out to perform.

NCP-DRM50 Component List:

- 1 x Camera
- 1 x Monitor
- 1 x 6M Extension Cable
- 2 x Power Cable
- 1 x Window Mount
- 1 x Dash Mount

Package Contents

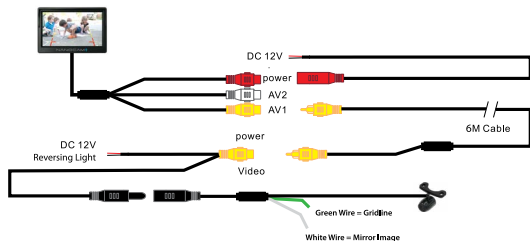
5" Monitor	Camera	Dash Mount	Suction Cup Mount	Power Cable	Extension Cable
					

Important Notice

1. Please read this manual carefully before using the product.
2. This unit is for vehicles with 12V DC only.
3. Route wiring harness away from heat sources and electrical components.
4. Wire connection points should be insulated
5. Please install this unit in a professional manner
6. Please perform tests after finishing the installation.
7. Specifications subject to change without prior notice.

Specifications (Monitor)	Specifications (Camera)
Display: 5.0" (16:9 ratio diagonal length)	Resolution: 420 TV Lines
Power: ≤3W	Effective pixels: PAL = 648 x 520
Power supply: 9 – 16V DC	NTSC: 648 x 488
Resolution: 480(W)*R.G.B.*272(H)	Power supply: 9 – 16V DC
PAL/NTSC compatible	Operating Temperature: -20°C – +70°C
2 AV inputs (allows up to two cameras)	Horizontal Angle: 170° degrees
180° degree rotational swivel stand	Water-proof rating: IP68
Auto activation upon reverse gear engagement	Minimum Illumination: 0.5 Lux
Adjustable brightness	Normal to Mirror image switching
	Grid-line switching

Wiring Diagram



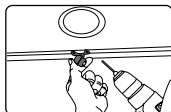
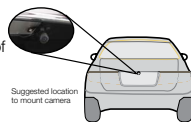
Front view option: NCP-DRM50 functions as a rear view camera standard and also supports front view application. For front view application, you can cut the thin WHITE wire near the camera lead and restart power to see the image reversed.

Grid-line option: NCP-DRM50 comes with parking grid-lines. To remove the grid-line application, you can cut the thin GREEN wire near the camera lead and restart power to show the removal of grid-lines on your screen.

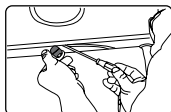
Camera Installation - Butterfly Mount

1. Select a flat and centred location near the number plate lamp at the rear of the vehicle to mount camera.

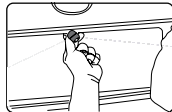
IMPORTANT: When selecting this location it is highly recommended that the image transmitted by the camera show the rear bumper and area behind the vehicle.



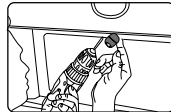
2. Attach tape to the bracket of the camera, and drill a small hole for the first screw.



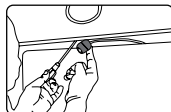
3. Use a screw driver to fix the first screw, but don't tighten it yet.



4. Insert camera wire through newly drilled hole and mount securely in place.



5. Mark the position suitable for the second screw and drill a small hole for it.



6. Fix the second screw and tighten both screws.

Monitor Installation

Inserting your required bracket:

1. Insert the bracket pegs of your required bracket into the rear of the monitor
2. Slide the monitor down to lock the bracket in place

Installing the Windscreen Suction Mount:

1. Clean the intended installation point on the interior of your windscreen ensuring there is no dirt or dust present.
2. Remove the protective film from the suction cap
3. With the lock clip of the suction mount in the UP position position the suction mount on the interior of your windscreen ensuring that the monitor will not block the drivers view whilst driving.
4. Firmly hold the suction cup against the window while switching the lock clip DOWN into the locked position.

Installing the 3M Dash Mount:

1. Clean a suitable flat position on your dashboard ensuring that there is no dust or dirt on the intended installation position.
2. Remove the protective film from the adhesive sticker.
3. Firmly press the base of the bracket down onto the desired position for one minute ensuring that the adhesive is making full contact with your intended installation position.

Menu

The menu button on the rear of the Monitor can be used to update the display settings.

To access the menu the monitor needs to be active. Please follow the directions in the section named **How to Test** for instructions on how to activate switch on your monitor so that it is ready to adjust the settings.

Adjusting the Settings

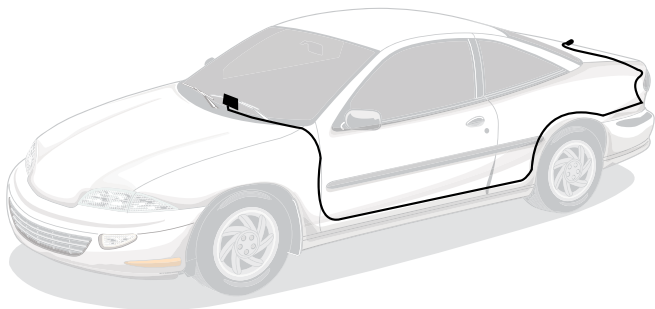
1. With the monitor on, press the Menu button on the rear of the monitor to cycle through the following setting:
 - Brightness
 - Contrast
 - Colour
 - Language
 - Ratio
2. To adjust any of these settings use the **UP** and **DOWN** button on the rear of the monitor.
3. To save the settings, wait 3 seconds until the menu disappears.

Installation Diagram

Testing

How to Test:

1. Apply the parking brakes.
2. Turn Ignition on. (DO NOT TURN ON VEHICLE)
3. Shift into reverse gear.
4. Image should appear on the monitor.



Trouble Shooting

Problem	Solution
"No Signal" appears while reversing	<ol style="list-style-type: none">1. Check video input connections2. Check camera power connections
Video image is not sharp	Check camera lens for debris

Maintenance

Always keep camera clear from dirt and mud. Clean camera with a soft moist cloth.

Warranty Terms & Conditions

Our goods come with guarantees that cannot be excluded under the Australian & New Zealand Consumer Law. You are entitled to a replacement or refund for a major failure and for compensation for any other reasonably foreseeable loss or damage. You are also entitled to have the goods repaired or replaced if the goods fail to be of acceptable quality and the failure does not amount to a major failure.

This warranty is provided in addition to your rights under the Australian & New Zealand Consumer Law.

NanoCam Plus warrants that this product is free from defects in material and workmanship for a period of 12 months from the date of purchase or for the period stated on the packaging. This warranty is only valid where you have used the product in accordance with any recommendations or instructions provided by NanoCam Plus.

This warranty excludes defects resulting from alterations of the product, accident, misuse, abuse or neglect.

In order to claim the warranty, you must return the product to the retailer from which it was purchased or if that retailer is part of a National network, a store within that chain, along with satisfactory proof of purchase. The retailer will then return the goods to NanoCam Plus. NanoCam Plus will repair, replace or refurbish the product at its discretion. The retailer will contact you when the product is ready for collection. All costs involved in claiming this warranty, including the cost of the retailer sending the product to NanoCam Plus, will be borne by you.

NanoCam Plus Address: 44 Translink Drive, Keilor Park Victoria Australia 3042

Ph: +61 03 8331 4800

Email: info@nanocamplus.com.au



www.nanocamplus.com.au
www.nanocamplus.co.nz

