



PR3217 FISHING ROD HOLDER INSTRUCTIONS

FIRST TIME INSTALLATION

- Please read instructions carefully before installation.
- Check the contents of kit. Contact your Prorack dealer if any parts appear to be missing or damaged.
- Clean your roof racks prior to fitting the Fishing Rod Holder.

TOOLS REQUIRED

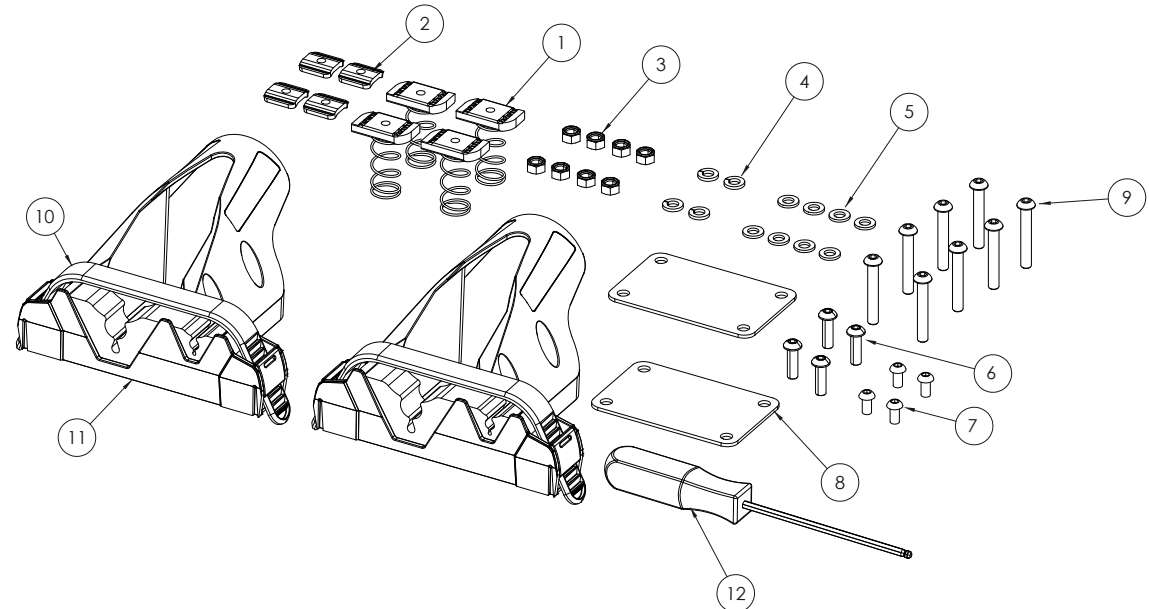
- 10mm Spanner or Torque Wrench (for P-Bar fitment only)

IMPORTANT WARNING!

IT IS CRITICAL THAT ALL PRORACK RACKS AND ACCESSORIES BE PROPERLY AND SECURELY ATTACHED TO YOUR VEHICLE. IMPROPER ATTACHMENT COULD RESULT IN AN AUTOMOBILE ACCIDENT, AND COULD CAUSE SERIOUS BODILY INJURY OR DEATH TO YOU OR TO OTHERS. YOU ARE RESPONSIBLE FOR SECURING THE RACKS AND ACCESSORIES TO YOUR CAR, CHECKING THE ATTACHMENTS PRIOR TO USE, AND PERIODICALLY INSPECTING THE PRODUCTS FOR ADJUSTMENT, WEAR, AND DAMAGE. THEREFORE, YOU MUST READ AND UNDERSTAND ALL OF THE INSTRUCTIONS AND CAUTIONS SUPPLIED WITH YOUR PRORACK PRODUCT PRIOR TO INSTALLATION OR USE. IF YOU DO NOT UNDERSTAND ALL OF THE INSTRUCTIONS AND CAUTIONS, OR IF YOU HAVE NO MECHANICAL EXPERIENCE AND ARE NOT THOROUGHLY FAMILIAR WITH THE INSTALLATION PROCEDURES, YOU SHOULD HAVE THE PRODUCT INSTALLED BY A PROFESSIONAL INSTALLER SUCH AS A ROOF RACK SPECIALIST.

KIT CONTENTS

| Item # | Component | Qty |
|--------|------------------------------|-----|
| 1 | M6 Spring Nut | 4 |
| 2 | M6 Slot Nut | 4 |
| 3 | M6 Nylock Nut | 8 |
| 4 | M6 Spring Washer | 4 |
| 5 | M6 Washer | 8 |
| 6 | M6 Button Head Capscrew 20mm | 4 |
| 7 | M6 Button Head Capscrew 12mm | 4 |
| 8 | Clamp Plate For P-Bar | 2 |
| 9 | M6 Button Head Capscrew 40mm | 8 |
| 10 | Fishing Rod Holder Zip Strap | 2 |
| 11 | Fishing Rod Holder Body | 2 |
| 12 | Screwdriver Allen Key 4mm | 1 |



Installation onto Tradesman and other Heavy Duty Crossbars

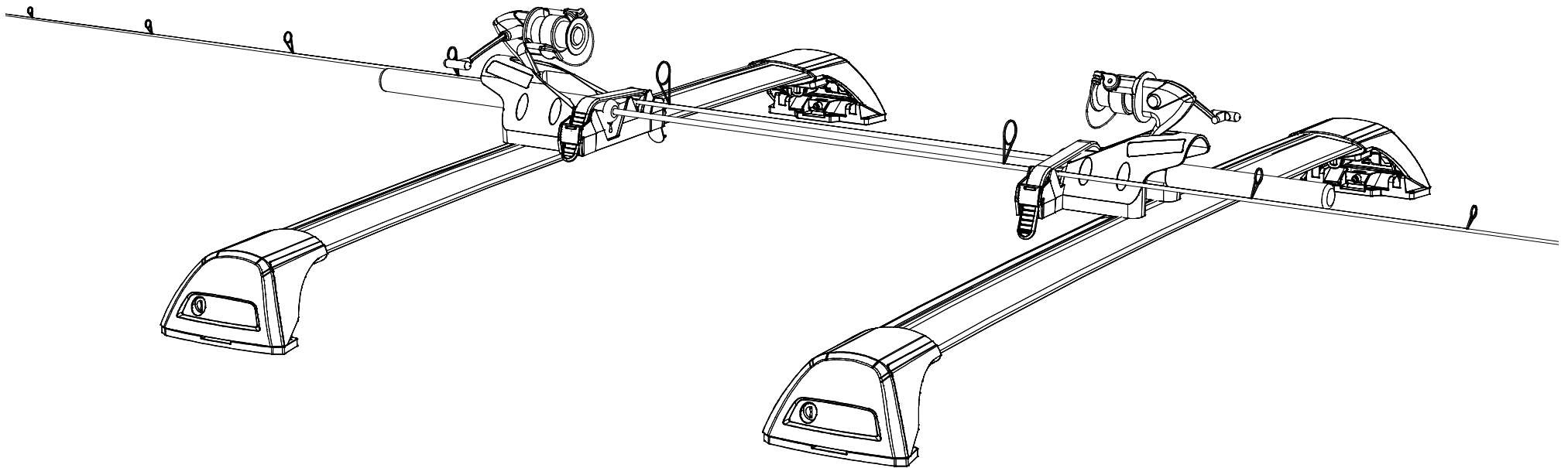
▶ Go to Page 3

Installation onto Prorack S-Wing and International T-Slot Crossbars

▶ Go to Page 4

Installation onto Prorack P-bar and other square Crossbars

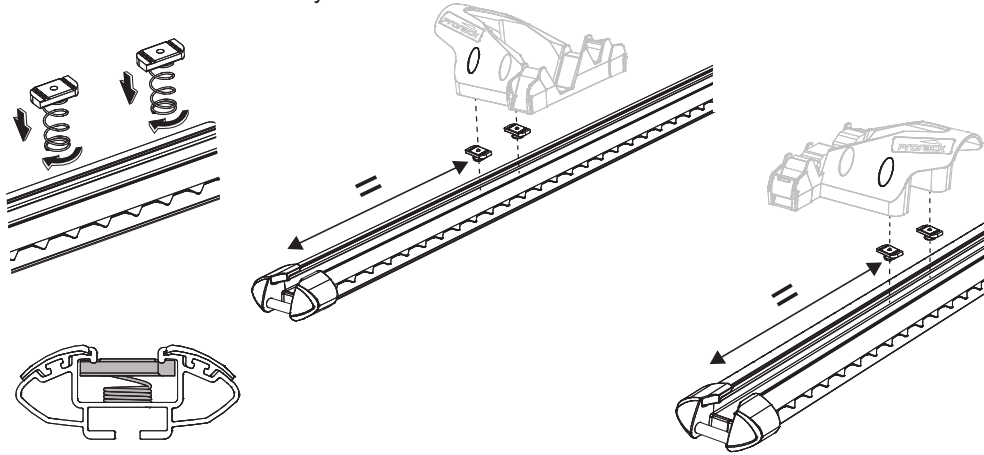
▶ Go to Page 5



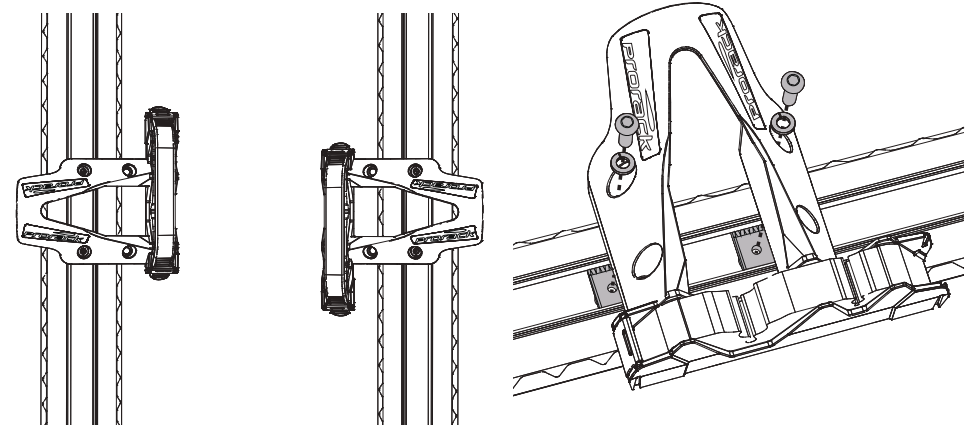
INSTALLATION ONTO TRADESMAN AND OTHER HEAVY DUTY CROSSBARS

- 1 Insert 2 x M6 Spring Nuts at an equal distance from the ends of each crossbar. Push Spring Nuts down into the crossbar channels and twist to lock into place as pictured.

Use the Rod Holder Body to ensure Spring Nuts align with the two rear holes in the base of Rod Holder Body.

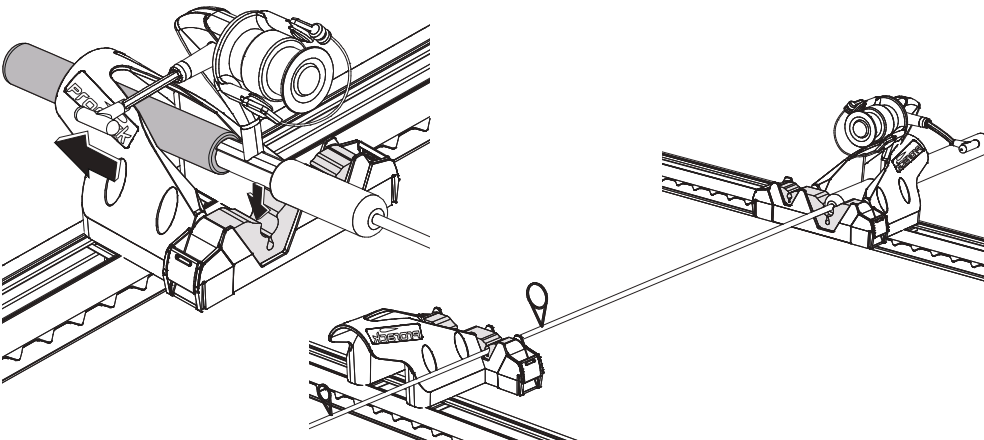


- 2 Position the Rod Holder Bodies on each crossbar with the strap/foam ends pointing towards each other. Secure the 2 x Rod Holder Bodies to the M6 Spring Nuts in the crossbars using the M6 Button Head Capscrews 20mm and M6 Spring Washers via the rear holes as shown. Tighten to 4Nm with 4mm Allen Key Screwdriver provided or a suitable Torque Wrench.



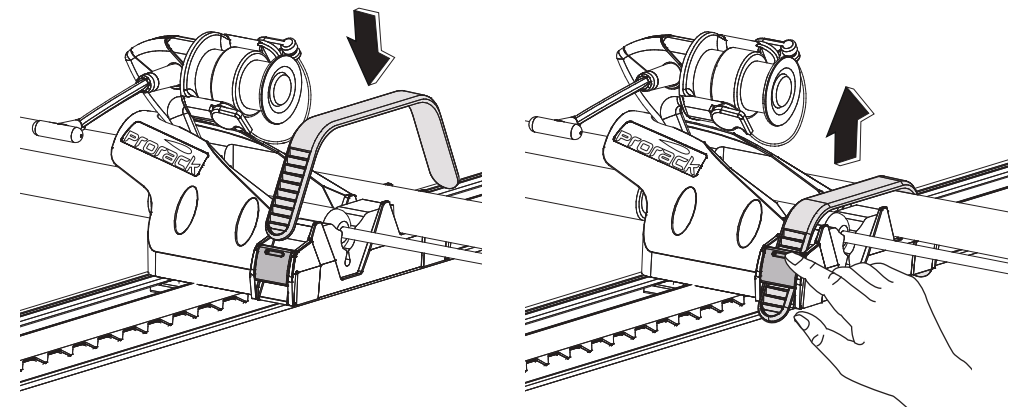
- 3 Your Fishing Rod Holder is now fitted and ready for use.

To use, place handle end of rod back into the main opening of the Rod Holder Body and down into the foam. Place the rod tip into the foam on the opposite Rod Holder Body as shown. Repeat for multiple rods, utilising the opposite end as required.



- 4 To secure rods, push the Zip Straps into the Buckles on either side of the Rod Holders.

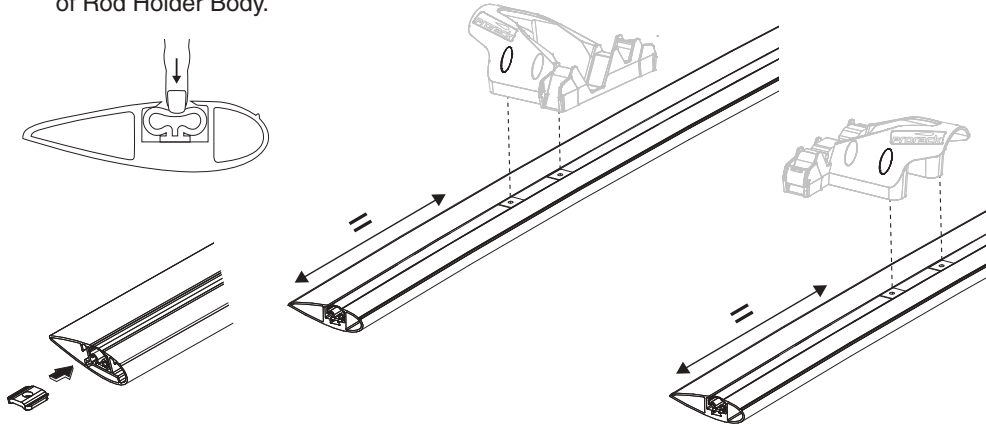
To release, push the top end of the Buckles inwards and lift Strap.



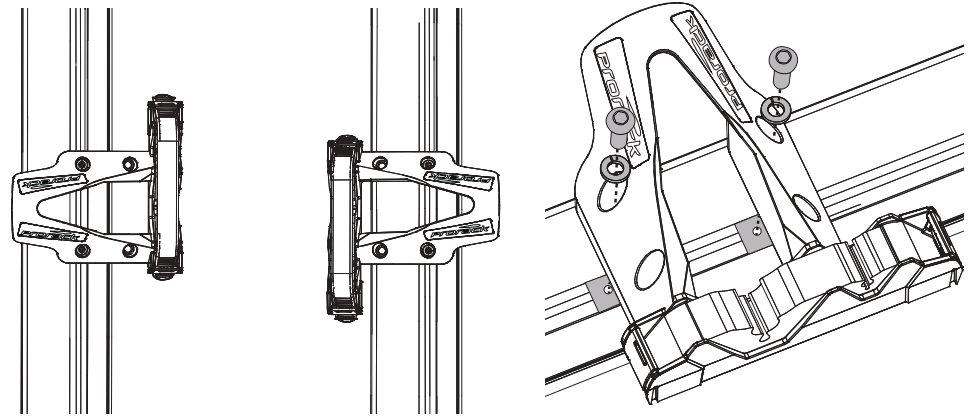
INSTALLATION ONTO PRORACK S-WING AND INTERNATIONAL T-SLOT CROSSBARS

- 1 Push rubber infill down and slide 2 x M6 Slot Nuts into each crossbar channel at an equal distance from the ends of the crossbars as pictured. The 4mm Screwdriver Alley Key can be used to assist Slot Nut installation into the channel.

Use the Rod Holder Body to ensure Slot Nuts align with the two rear holes in the base of Rod Holder Body.

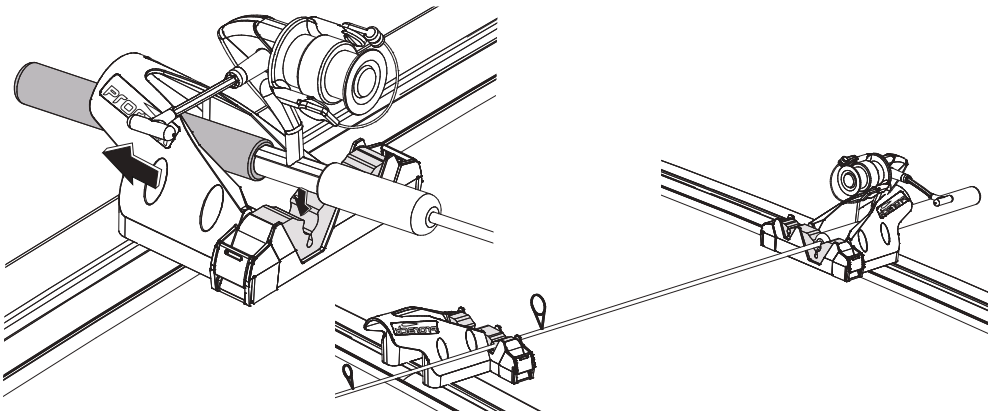


- 2 Position the Rod Holder Bodies on each crossbar with the strap/foam ends pointing towards each other. Secure the Rod Holder Bodies to the Slot Nuts in the crossbars using the M6 Button Head Capscrews 12mm and M6 Spring Washers via the rear holes as shown. Tighten to 4Nm with 4mm Allen Key Screwdriver provided or a suitable Torque Wrench.



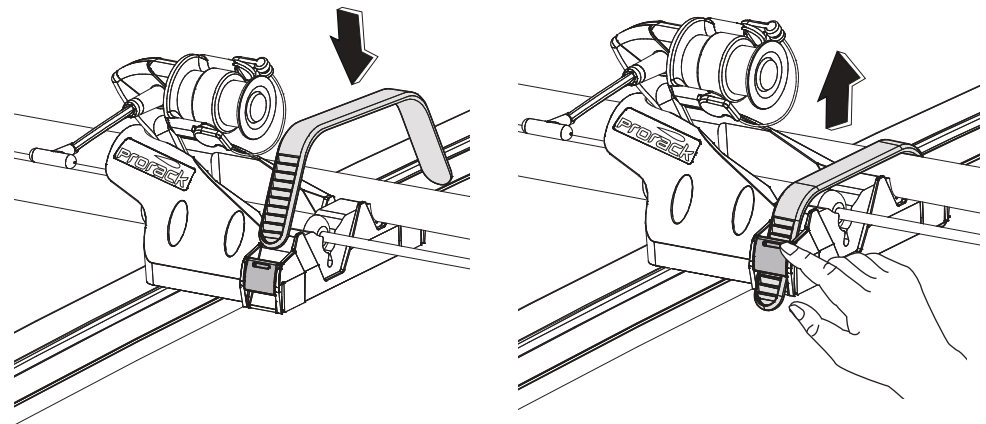
- 3 Your Fishing Rod Holder is now fitted and ready for use.

To use, place handle end of rod back into the main opening of the Rod Holder Body and down into the foam. Place the rod tip into the foam on the opposite Rod Holder Body as shown. Repeat for multiple rods, utilising the opposite end as required.



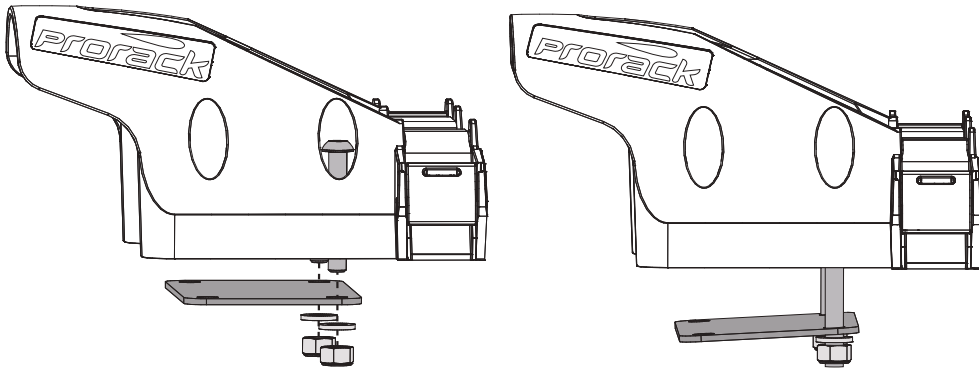
- 4 To secure rods, push the Zip Straps into the Buckles on either side of the Rod Holders.

To release, push the top end of the Buckles inwards and lift Strap.

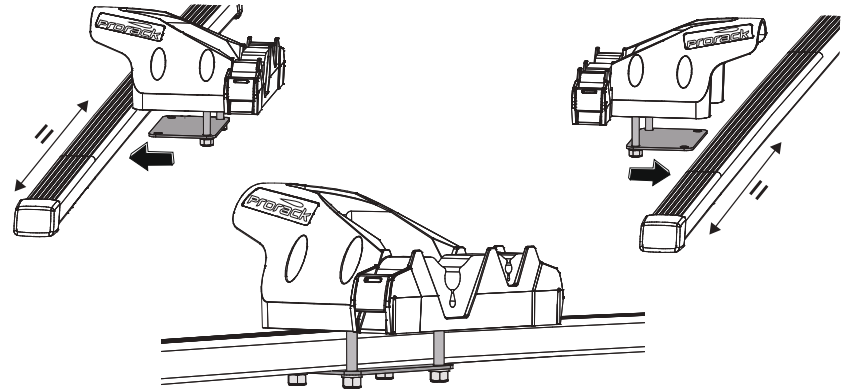


INSTALLATION ONTO PRORACK P-BAR AND OTHER SQUARE CROSSBARS

- 1 Loosely fasten the Clamp Plates to Rod Holder Bodies via the two inward facing holes (next to foam) using 2 x M6 Button Head Capscrews 40mm, 2 x M6 washers and 2 x M6 Nyloc Nuts as shown.

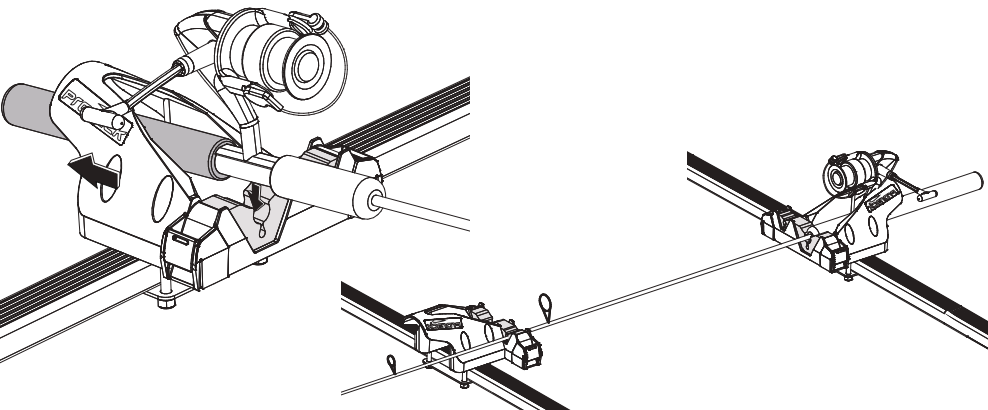


- 2 Position the Rod Holder Bodies on each crossbar with the strap/foam ends pointing towards each other. Slide the Clamp and Rod Holder assemblies onto crossbars at an equal distance from the ends of the crossbars as pictured. Install the remaining M6 Button Head Capscrews 40mm, M6 washers and M6 Nyloc Nuts into the outward facing holes. Tighten all Nuts to 4Nm with a 10mm spanner or a suitable Torque Wrench.



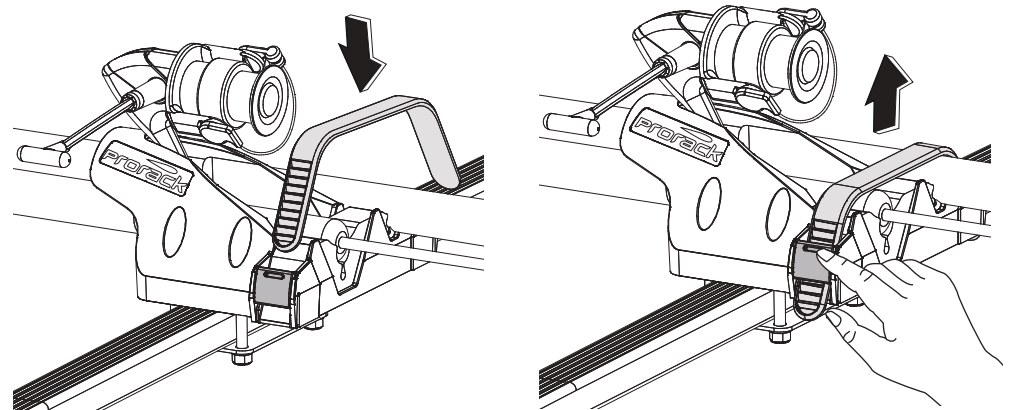
- 3 Your Fishing Rod Holder is now fitted and ready for use.

To use, place handle end of rod back into the main opening of the Rod Holder Body and down into the foam. Place the rod tip into the foam on the opposite Rod Holder Body as shown. Repeat for multiple rods, utilising the opposite end as required.



- 4 To secure rods, push the Zip Straps into the Buckles on either side of the Rod Holders.

To release, push the top end of the Buckles inwards and lift Strap.



MAINTENANCE

- Check accessory is securely attached whenever you refit it to the vehicle. If the unit feels loose, refer to the fitting instructions and readjust.
- Regularly check all fasteners. This includes all attached accessories and roof racks.
- Clean with hot soapy water and sponge as required.

CAUTION

- The Fishing Rod Holder can carry up to 2 fishing rods with a maximum of 3kg per rod. Ensure all items are securely attached.
- A loaded roof rack system can alter the performance of your vehicle. Be especially aware of the effects of side winds, changing of direction, and braking performance. Avoid rapid acceleration and deceleration. Drive Carefully.
- Make sure all loads are securely fastened with the Zip Straps. Check regularly during longer journeys.
- Never drive into a car wash with the roof rack system or accessories fitted.
- Do not exceed the vehicle manufacturer's roof load rating. Total load equals weight of roof racks + accessories + cargo/equipment.

WARRANTY & DISCLAIMER

Yakima Australia Pty Ltd ABN 58 154 440 221

17 Hinkler Court, Brendale QLD 4500

Tel: 0800 4776 722 (NZ) or 1800 143 548 (AU)

Email: warranty@yakima.co.nz or warranty@yakima.com.au

1. Where the product is supplied to the customer for other than business purposes within the meaning of section 43 of the New Zealand Consumer Guarantees Act 1993, the provisions of that Act shall apply. It is important that anyone who fits or uses this product does so in accordance with the manufacturer's instructions.
2. Where the product is supplied to the customer for business purposes within the meaning of section 43 of the New Zealand Consumer Guarantees Act 1993, the provisions of that Act and all other representations or terms (including any conditions or warranty expressed or implied by law, statute or otherwise) not expressly included in this leaflet are hereby expressly excluded shall have no effect and the clauses (a) and (b) shall apply.
3. Subject to the **Additional Information (Australia)**, where the product is supplied and purchased in Australia, the following shall apply:
 - (a). THE SUPPLIER WARRANTS the product to be free from defects in materials and/or workmanship for a period of three (3) years from the date of original purchase (the warranty period). Proof of purchase is required. Subject to the limitations and exclusions set out below, the Supplier hereby agrees to remedy any defects in materials or workmanship becoming apparent during the warranty period, by replacing or repairing any defective product or component (at its option) free of charge to the purchaser in respect of replacement parts or labour. Any defective product or component must be notified and where practicable, returned at the purchaser's expense to the Supplier immediately upon discovery of the alleged defect and no attempt made on the part of the purchaser to repair it.

- (b). EXCEPTIONS, EXCLUSIONS AND LIMITATIONS TO WARRANTY. The product and/or its components must be fitted/assembled and loaded in accordance with the Supplier's written instructions and any requirements set out in the car's owner manual. This warranty does not cover defects, loss or damage resulting from circumstances beyond the Supplier's control including, but not limited to misuse, overloading, or failure to assemble and/or fit the product or component in accordance with the Supplier's written instructions. Nor does the warranty cover defects, loss or damage resulting from accidents, unlawful use of the vehicle or defects/inconsistencies in the vehicle on which the product or component is fitted. Liability for direct, indirect, special, punitive, incidental, exemplary, contractual or consequential damage or loss arising from defects, faulty materials or design omissions or negligence or workmanship in the product or its components is hereby expressly excluded subject to the following. Certain Commonwealth legislation, including the Competition and Consumer Act 2010 (Cth), and other State and Territorial legislation confers upon purchasers rights which cannot be excluded from or be restricted or modified by contract. Any conditions, guarantees and/or warranties implied by law and incapable of exclusion are deemed to be expressly incorporated herein. Nothing herein contained is intended nor shall be permitted to be inconsistent with any such conditions, guarantees and/or warranties. To the extent permitted by legislation all conditions, guarantees and/or warranties such as implied warranties which are capable of exclusion are hereby expressly excluded and negated.

ADDITIONAL INFORMATION (AUSTRALIA)

This information should be read in conjunction with clauses (a) and (b).

IMPORTANT LEGAL NOTICE

Our goods come with guarantees that cannot be excluded under the Australian Consumer Law. You are entitled to a replacement or refund for a major failure and for compensation for any other reasonably foreseeable loss or damage. You are also entitled to have the goods repaired or replaced if the goods fail to be of acceptable quality and the failure does not amount to a major failure.

This warranty does not change or take away your rights under the Australian Consumer Law. Your right to claim under this policy for the benefits covered is in addition to other rights and remedies you have under the law in relation to the product.

Where you become aware of defects in materials or of workmanship, and wish to make a claim under this warranty you must do the following for the warranty to be honoured by your Prorack dealer or Yakima Australia Pty Ltd ABN 58 154 440 221 (Yakima):

1. Make a claim as soon as practicable by contacting the Prorack dealer from whom you purchased the product, who will give you instructions on how to proceed.
2. If you are unable to contact the Prorack dealer, or the dealer is not able to remedy the defect, you should contact Yakima as soon as practicable at:

Call: 0800 4776 722 (NZ) or 1800 143 548 (AU)

Email: warranty@yakima.co.nz or warranty@yakima.com.au

Alternately, you can write to Yakima at 17 Hinkler Court, Brendale QLD Australia 4500 in order to make a claim under your warranty.

3. Upon contacting Yakima directly, you should explain as fully as possible the defect. A Yakima representative will provide you with appropriate instructions for returning the product together with a copy of the original purchase invoice or receipt to Yakima.
4. The costs and expenses associated with making a claim under your warranty including the costs of complying with those instructions and of returning the product to Yakima or the Prorack dealer will be borne by you.

Following receipt of the product and purchase invoice or receipt, Yakima or the Prorack dealer must inspect the product to determine whether the claim falls within the warranty. If:

- 4.1 the claim falls within the warranty, Yakima will remedy any defects in materials or workmanship becoming apparent during the warranty period, by replacing or repairing any defective product or component (at its option) free of charge to the purchaser in respect of replacement parts or labour.
- 4.2 the claim does not fall within the warranty, Yakima will return the product to you at your expense.