

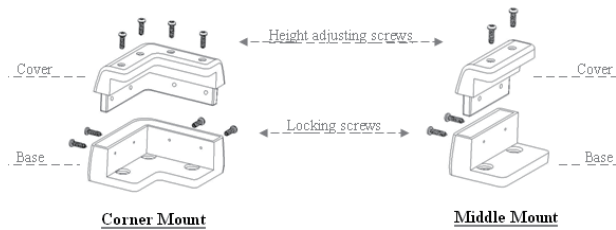
Universal Solar Panel Mount

Features:

- This universal solar panel mount is a set of mounting brackets that help to secure a solar panel to a desired surface, such as on a vehicle, boat or roof.
- This universal solar panel mount is suitable for various sized solar panels and solar panel frames of thicknesses between 18mm to 40mm.
- This universal solar panel mount can raise a solar panel to allow increased air flow which can help reduce the solar panel temperature and solar power loss.

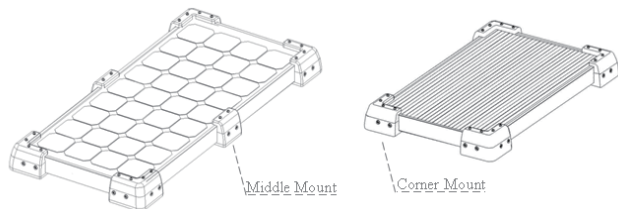
Part List

Serial	Description of parts	Quantity
1	Corner mount (inclusive of base & cover)	4 pcs
2	Middle mount (inclusive of base & cover)	2 pcs
3	Locking screws	20 pcs
4	Screws for 35mm height frame only.	20 pcs
5	Height adjusting screws for 18- 40mm height frame.	20 pcs



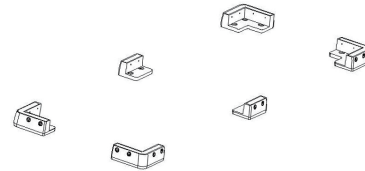
Fitment Instructions

1. Corner mounts should be positioned around the four corners of the solar panel.
2. To prevent the solar panel from curving in the middle, add the middle mounts onto the middle section of the solar panel.



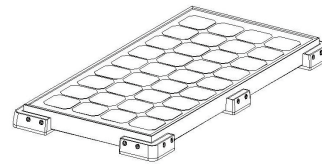
• Step 1

Secure base of the corner mount (and the middle mount, if applicable). The bases can be secured either by screws (not included) to the desired surface though the holes at its bottom or you can secure by using strong adhesive (not included) to the bottom of corner mount or middle mount. Make sure that you position all the bases in a way that solar panel can fit in between precisely.



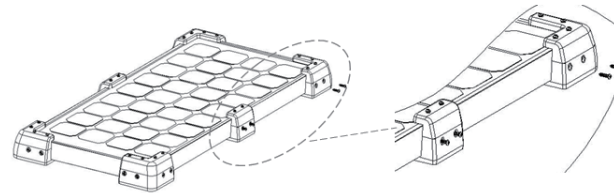
• Step 2

Place solar panel on top of the bases.



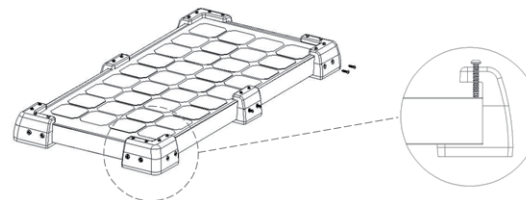
• Step 3

Secure solar panel by fitting the mount covers and securing with locking screws provided.



• Step 4

This universal solar panel mount can handle any solar panel frame with thicknesses between 18mm and 40mm Max. Soft material, such as rubber, can be placed in-between the screw and the frame to prevent damage to the frame.



WARRANTY

This product is guaranteed against defects for a period of 12 months from date of purchase. This warranty is provided by Super Cheap Auto Pty Ltd ACN 085 395 124 (Supercheap Auto) of 751 Gympie Rd Lawnton QLD 4501 Ph (07) 3482 7500. Supercheap Auto will offer a repair, replacement product or store credit if the product is assessed as being defective during the warranty period.

To claim under this warranty, take this product to the Front Service Desk of your nearest Supercheap Auto store. For store locations, visit www.supercheapauto.com.au (AUS) or www.supercheapauto.co.nz (NZ). You will need your receipt or proof of purchase. Additional information may be requested of you to process your claim. Should you not be able to provide proof of purchase with a receipt or a bank statement, identification showing your name, address and signature may be required to process your claim.

This product may need to be sent to the manufacturer to assess the defect before determining any claim. Faults or defects caused by product modification, misuse and abuse, normal wear and tear or failure to follow user instructions are not covered under this warranty. Our goods come with guarantees that cannot be excluded under the Australian Consumer Law. You are entitled to a replacement or refund for a major failure and for compensation for any other reasonably foreseeable loss or damage. You are also entitled to have the goods repaired or replaced if the goods fail to be of acceptable quality and the failure does not amount to a major failure.

Any expenses incurred relating to the return of this product to store will normally have to be paid by you. For more information contact your nearest Supercheap Auto store. The benefits to the consumer given by this warranty are in addition to other rights and remedies of the Australian Consumer Law in relation to the goods and services to which this warranty relates.