

CYCLONIC BAGLESS VACUUM CLEANER



Manufactured and packaged for SRGS PTY LTD ABN 23 113 230 050
751 Gympie Road, Lawnton, Queensland 4501, Australia



Value you can trust



CYCLONIC BAGLESS VACUUM CLEANER

Owners/Instruction Manual



PLU 389624

IMPORTANT SAFEGUARDS

When using an electrical appliance, basic precautions should always be followed, including the following:

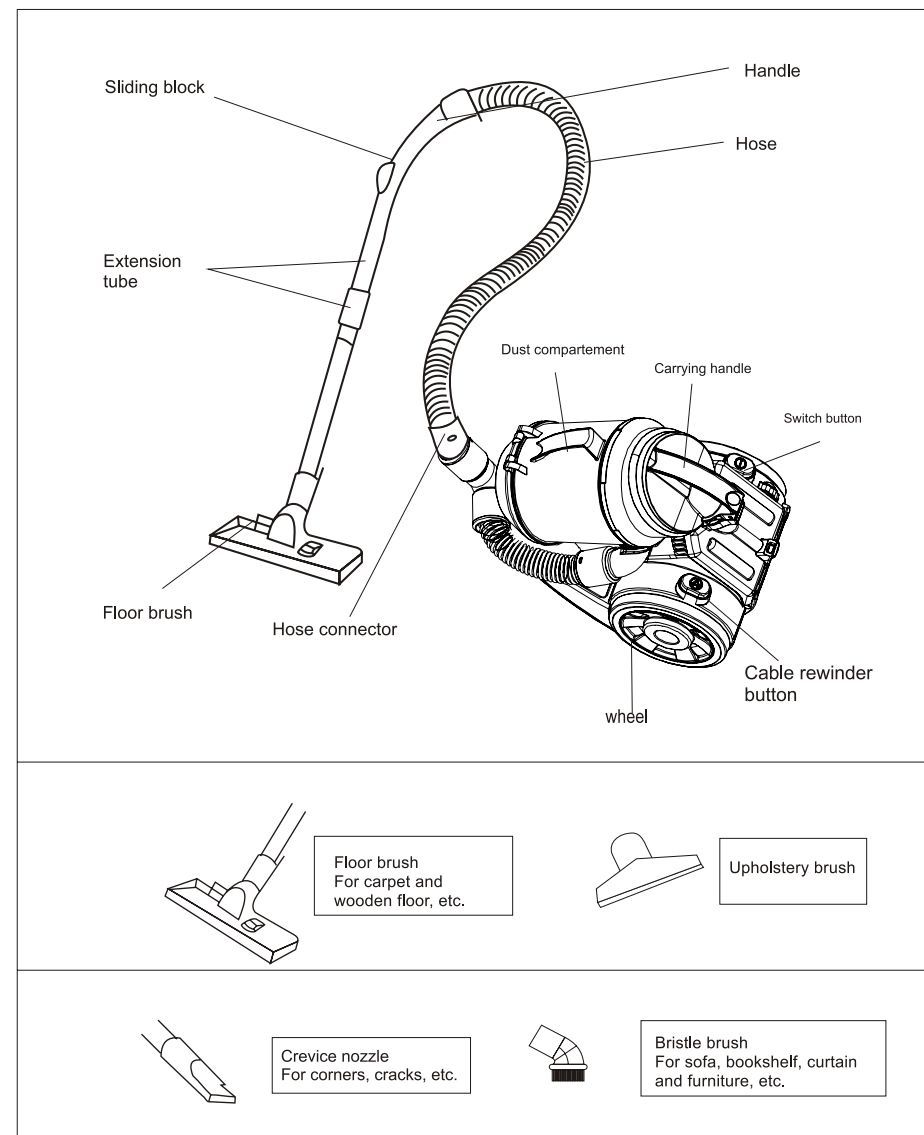
READ ALL INSTRUCTION BEFORE USING THIS VACUUM CLEANER

WARNING

To reduce the risk of fire, electric shock, or injury:

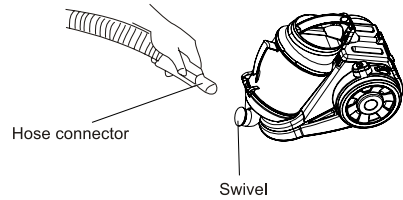
- Do not use outdoors.
- Do not leave vacuum cleaner when plugged in. Turn off the switch and unplug the electrical cord when not in using and before servicing.
- Do not allow to be used as a toy. Close attention is necessary when used by or near children.
- Use only as this manual described. Use only manufacturer's recommended attachments.
- Do not use with damaged power cord or plug.
- Do not pull or carry by cord, use a cord as a handle, close door on cord, or pull cord around sharp edges and corners. Do not run this item over cord. Keep the cord away from heated surface.
- Do not use extension cords or outlets with inadequate current carrying capacity. Turn off all controls before unplug.
- Do not unplug by pulling on cord. To unplug, grasp the plug, not the cord.
- Do not handle plug or vacuum cleaner with wet hands or operate without shoes.
- Do not put any object into openings. Do not use with any opening blocked; Keep free of dust, lint, hair, and anything that may reduce airflow.
- This vacuum cleaner creates suction. Keep hair, loose clothing, fingers, and all parts of body away from openings and moving parts.
- Do not pick up anything that is burning or smoking, such as cigarettes, matches, or hot ashes.
- Do not use without dust bag or filter in place.
- Use extra care when cleaning on stairs.
- Do not use to pick up flammable or combustible liquids such as gasoline, or use in areas where they may be present.
- Store your cleaner indoors in a cool, dry area.
- Ensure you turn the unit off at the very minimum every 15 minutes (for 1 minute) to let the motor cool down - failure to do so may cause motor failure.
- Do not use this unit for more than 4 hours (including rest breaks) on any given day.
- If the supply cord is damaged, it must be replaced by the manufacturer.
- When retracting the cord ensure you hold the plug end before pressing the rewind button. Do not suck large fragments or sharp objects as these will damage the vacuum and void warranty. If suction decreases please check dust compartment is not full, check filters are not dirty and check to see that hose, extension tubes and floor tools are not jammed.
- This cleaner must be operated in accordance with these instructions and used only for domestic applications. This cleaner is not designed for industrial applications and should not be used for collection of cement dust, fiberglass dust, excessive or frequent sand or body fillers as these will be harmful to your motor and void the manufacturers warranty.

PARTS NAME



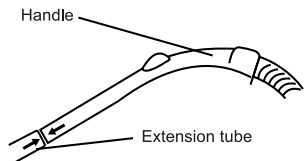
OPERATION METHOD

1



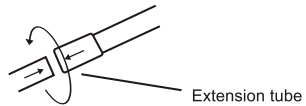
Insert the hose connector into the vacuum port of the Vacuum Cleaner

2



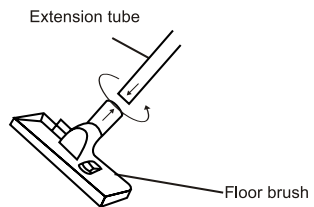
Insert the handle into the tube with a twisting force.

3



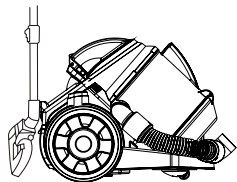
Push tubes together with a twisting force

4



Connect the floor tool with a twisting force

5

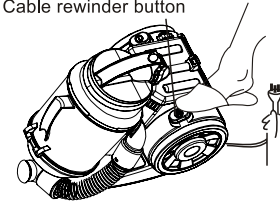


Standing position
Put the fixing block into the hole on the body,

OPERATION METHOD

6

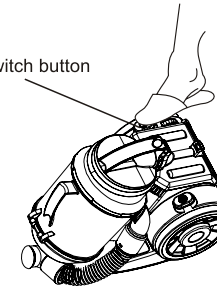
Cable rewriter button



(1) Pull out the cord as long as you need, but do not exceed the mark of red.
(2) Hold the plug when rewinding, you can press the button with your foot to retract the cable into the machine.

7

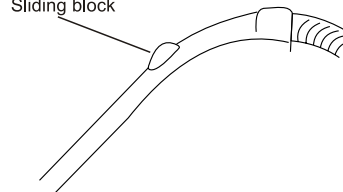
Switch button



Press the switch button to turn on/off the cleaner.

8

Sliding block



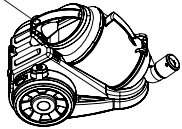
You can adjust the airflow by push the sliding block up and down.

Warning: This machine is a cyclonic design, no dust bag fitted. The filter is clogged when the dust container is full, you can follow below MAINTENANCE instructions to resolve this problem.

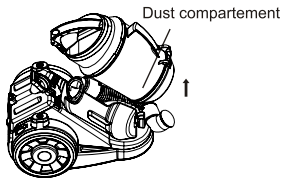
MAINTENANCE

Dust cup maintenance: Please always keep the dust cup clean before each operation. You can wash the cup in water whenever necessary.

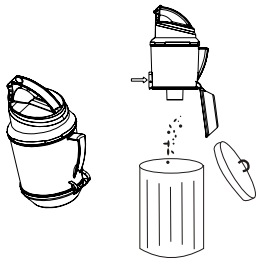
Lock button



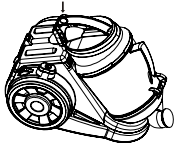
Press the locking button then push forward to open the dust compartment



Remove the dust compartment



Press the automatic release button to empty the dust into dust container.

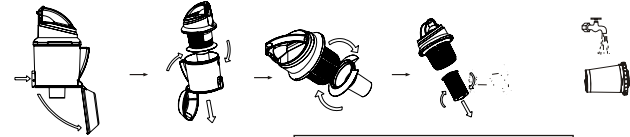


Reassemble the dust compartment to the body of vacuum cleaner

MAINTENANCE

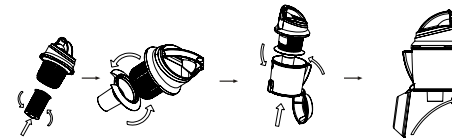
Filter maintenance

1



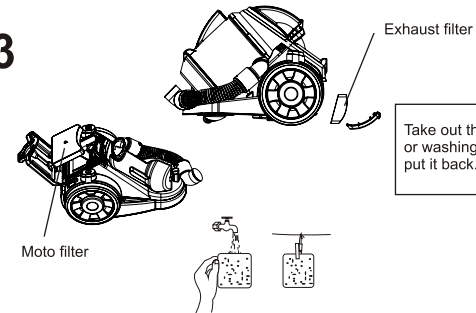
Remove the HEPA filter. Gently wash the filter using mild soap and water. Rinse thoroughly

2



Allow the filter to dry thoroughly before reinstalling

3



Take out the motor filter and exhaust filter tapping it or washing in running water drying naturally then put it back.

SPECIFICATION

- Rated voltage: 220V-240V ~ 50Hz
- Rated input power: 1800W
- Airflow: 1.7m³/min
- Vacuum pressure: 20 Kpa
- Noise: 80 dB(A)
- Capacity: 2.5L
- Cable length: 5m