

12V VACUUM CLEANER



Value you can trust



12V VACUUM CLEANER

Owners/Instruction Manual



Manufactured and packaged for SRGS PTY LTD ABN 23 113 230 050
751 Gympie Road, Lawnton, Queensland 4501, Australia

PLU 389620

Thanks for purchasing our company's product. Please read all instructions carefully before operation and retain for future use.

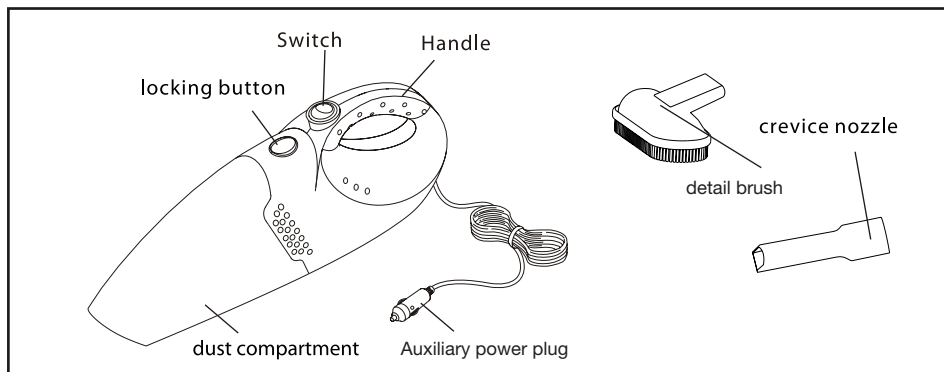
SAFETY DIRECTION:

1. This appliance is designed to be used with a 12 volt powered accessory socket.
2. The product must be operated in accordance with these instructions and to be used for domestic cleaning to remove dry dirt and dust.
3. This cleaner is intended for domestic use only and is not designed for collection of building materials including particle board, wood fibres, sand, cement, fibreblase etc. The pick up of these materials may be harmful to the cleaner and will void manufacturers warranty.
4. Always disconnect from power before emptying the dust compartment or removing the filter
5. Do not operate if the cord has been damaged, always disconnect the cleaner from power socket by pulling out the plug directly and never by pulling on power cord.
6. Do not pick up sharp or hard objects, matches, hot ashes, flammable liquids

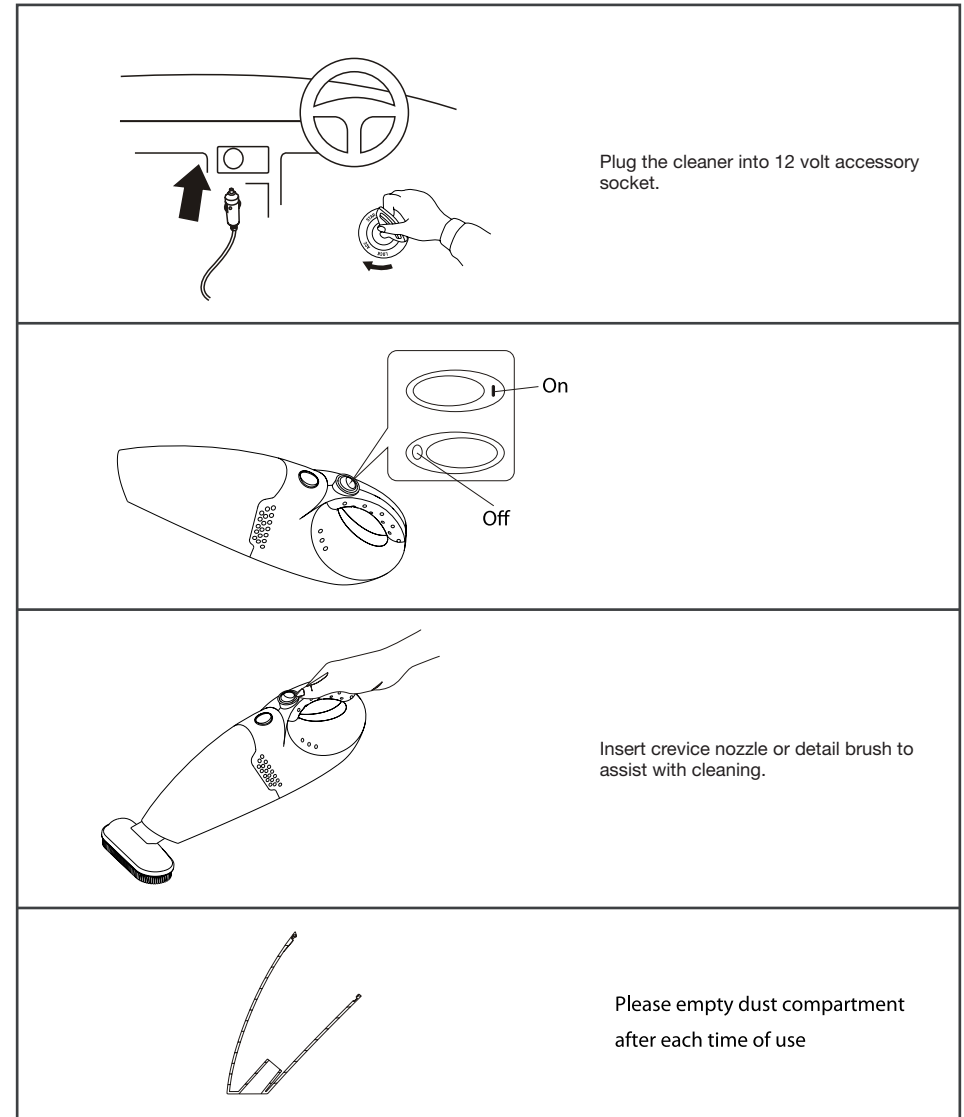
OVERLOAD PROTECTION:

Your cleaner is protected by a 3AG 8 amp fuse that is fitted in the power supply plug of the appliance. If the appliance should cease to operate check the fuse by unscrewing the auxiliary power plug and replace if fuse is blown. (ensure only the same fuse is used to replace blown fuse)

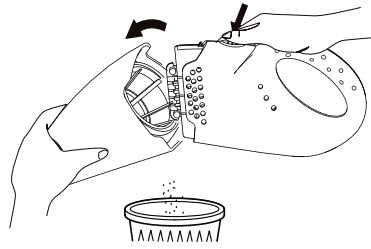
PARTS NAME:



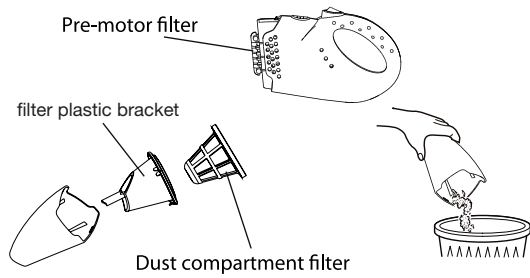
OPERATION:



MAINTENANCE:

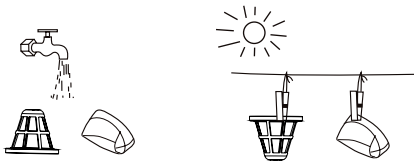


Press the locking button and
take out dust compartment

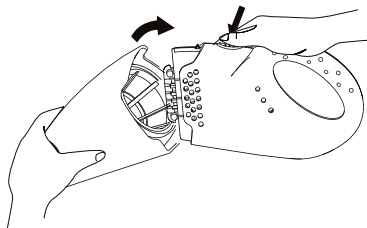


IMPORTANT!

Take out the filter and plastic
bracket and empty dust
compartment after each use.



Wash the filters in water
and allow to dry



Reassemble the appliance
together with dried filters
before next use.

SPECIFICATIONS:

Rated voltage: DC 12V
Rated input power: 60W
Vacuum pressure: 14 Kpa
Capacity: 0.3L
Cable length: 4.5m