



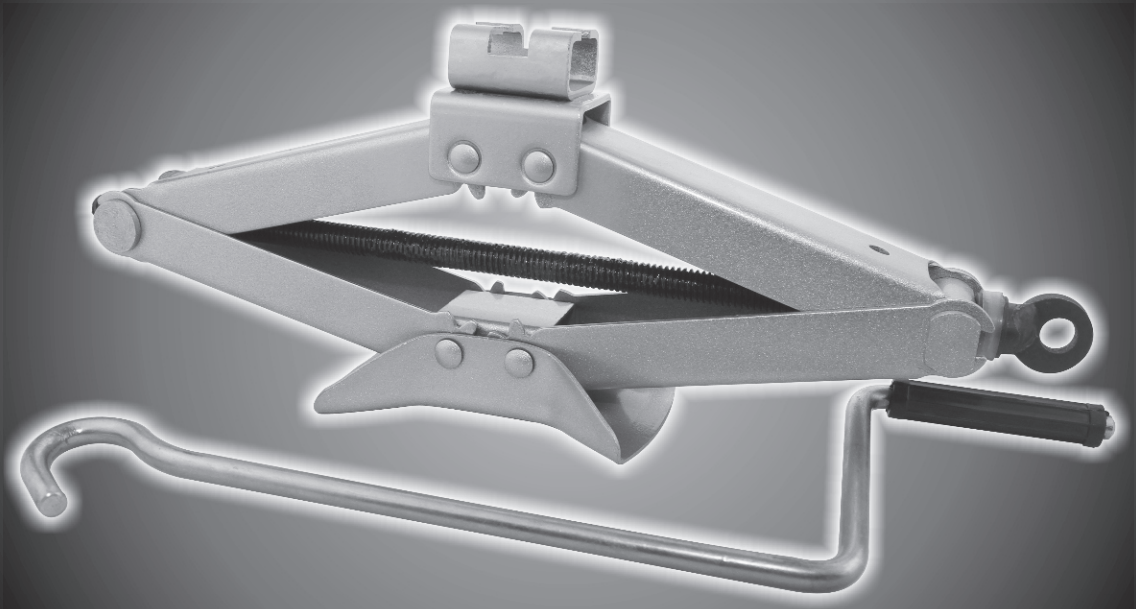
*Value you can trust*



# 1000KG SCISSOR JACK

## ***OWNERS MANUAL***

- ***Working Load Limit: 1000kg***
- ***Height Lowered: 115mm*** • ***Height Raised: 405mm***
- ***Meets Australian and New Zealand Standard AS/NZS 2693:2007***



**WARNING: READ OWNERS MANUAL CAREFULLY FOR SAFE OPERATION.**

PLU 362693

## WARRANTY

This product is guaranteed against defects for a period of **12 months** from date of purchase. This warranty is provided by **Super Cheap Auto Pty Ltd ACN 085 395 124 (Supercheap Auto) of 751 Gympie Rd Lawnton QLD 4501 Ph (07) 3482 7500**. Supercheap Auto will offer a repair, replacement product or store credit if the product is assessed as being defective during the warranty period.

To claim under this warranty, take this product to the Front Service Desk of your nearest Supercheap Auto store. For store locations, visit [www.supercheapauto.com.au](http://www.supercheapauto.com.au) (AUS) or [www.supercheapauto.co.nz](http://www.supercheapauto.co.nz) (NZ). You will need your receipt or proof of purchase. Additional information may be requested of you to process your claim. Should you not be able to provide proof of purchase with a receipt or a bank statement, identification showing your name, address and signature may be required to process your claim.

This product may need to be sent to the manufacturer to assess the defect before determining any claim. Faults or defects caused by product modification, misuse and abuse, normal wear and tear or failure to follow user instructions are not covered under this warranty. Our goods come with guarantees that cannot be excluded under the Australian Consumer Law. You are entitled to a replacement or refund for a major failure and for compensation for any other reasonably foreseeable loss or damage. You are also entitled to have the goods repaired or replaced if the goods fail to be of acceptable quality and the failure does not amount to a major failure.

Any expenses incurred relating to the return of this product to store will normally have to be paid by you. For more information contact your nearest Supercheap Auto store.

The benefits to the consumer given by this warranty are in addition to other rights and remedies of the Australian Consumer Law in relation to the goods and services to which this warranty relates.

## SAFE USAGE INSTRUCTIONS

- **The jack should be used on level firm ground wherever possible.**
- **It is recommended that the wheels of the vehicle be chocked, and that no person should remain in a vehicle that is being jacked.**
- **No person should place any portion of their body under a vehicle that is supported by a jack.**
- **The vehicle manufacturer owner's manual should be consulted prior to the jacking of the vehicle and for further instructions.**
- **Store the jack in upright position.**
- **Do not use if the jack appears damaged in anyway.**

## OPERATING INSTRUCTIONS

This scissor jack should be used for lifting and lowering only. The raised vehicle should be supported on vehicle support stands before working under the vehicle.

**BEFORE INITIAL USE:** Lubricate all pivoting and moving points with lubricating oil and after every 50 lifting/lowering cycles or 3 months (whichever occurs first).

## TO RAISE:

1. Hook the handle into the hole on the screw arm.
2. Position the jack under the load so that the head cap will load firmly and centrally.
3. Turn the handle clockwise to raise the jack until the head cap contacts the load. Once again, check to see that the head cap is correctly positioned.
4. Raise the load to the desired height. After the load is lifted to desired height, use appropriately rated vehicle support stands to support the load.

## TO LOWER:

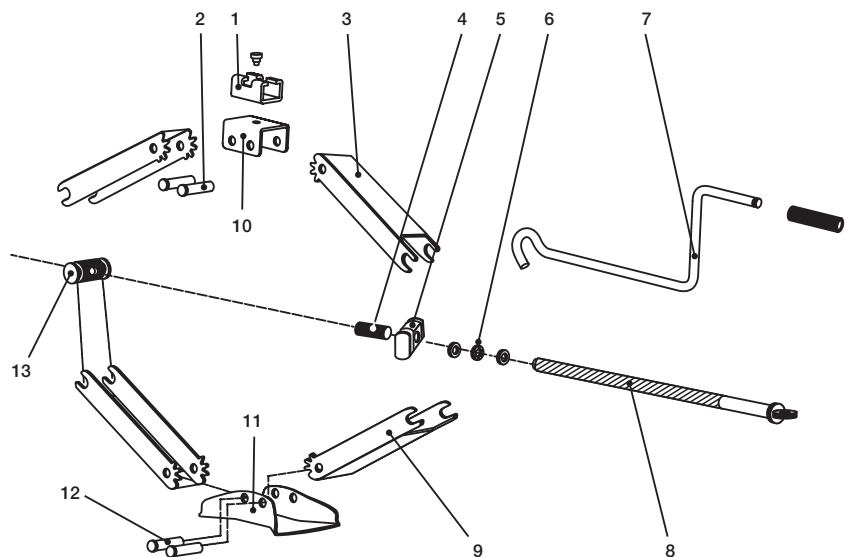
1. Raise the jack to remove the vehicle support stands.
2. Slowly turn the jack handle counter clockwise until the jack is returned to its lowered position.

## MAINTENANCE

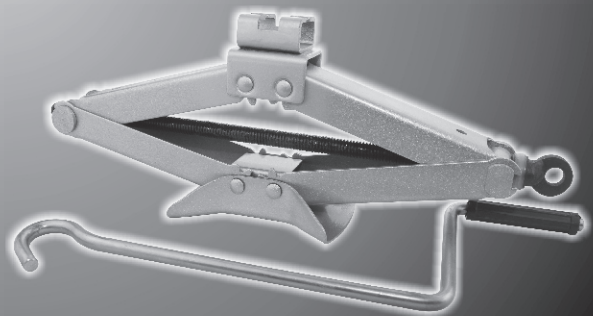
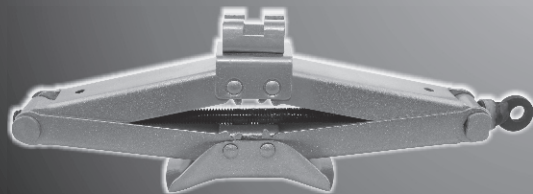
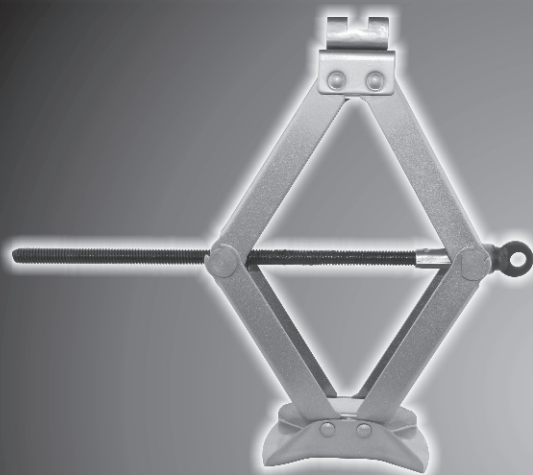
- Keep the jack clean and well lubricated.
- When not in use, always leave the jack in the fully lowered position.
- A visual inspection of the jack should be made before each use of the jack. The jack should be inspected for any abnormal conditions such as cracks in the welds and damaged, bent or missing parts. A jack showing any signs of not being in full operating condition should not be used.
- Due to the potential hazards associated with the operation of vehicle jacks, no alterations should be made to the product.

## PARTS LIST AND EXPLODED DIAGRAM

No.	DESCRIPTION	Qty.
1	Head Cap	1
2	Rivet for Head cap	2
3	Upper Arm	2
4	Collar	1
5	Bracket	1
6	Bearing	1
7	Offset Handle	1
8	Threaded Rod	1
9	Lower Arm	2
10	Inner Stay	1
11	Base	1
12	Rivet for Base	2
13	Nut	1



# 1000KG SCISSOR JACK



## SPECIFICATIONS

PLU:	362693
Working Load Limit:	1000kg
Height Lowered:	115mm
Height Raised:	405mm
Handle Length:	400mm



**WARNING: DO NOT GET UNDER A VEHICLE THAT IS SUPPORTED BY A JACK.**

Manufactured and packaged for SRGS PTY LTD ABN 23 113 230 050  
751 Gympie Road, Lawnton, Queensland 4501, Australia  
MADE IN CHINA