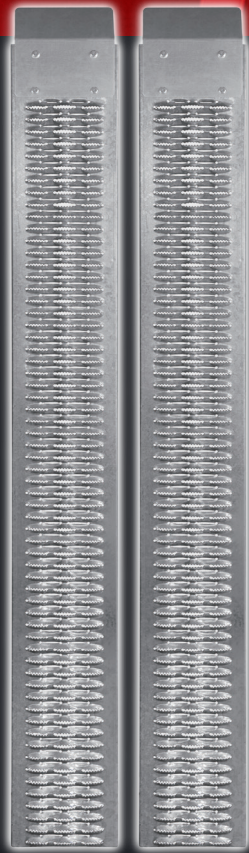


HEAVY DUTY STEEL LOADING RAMPS



Manufactured and packaged for SRGS PTY LTD ABN 23 113 230 050
751 Gympie Road, Lawnton, Queensland 4501, Australia

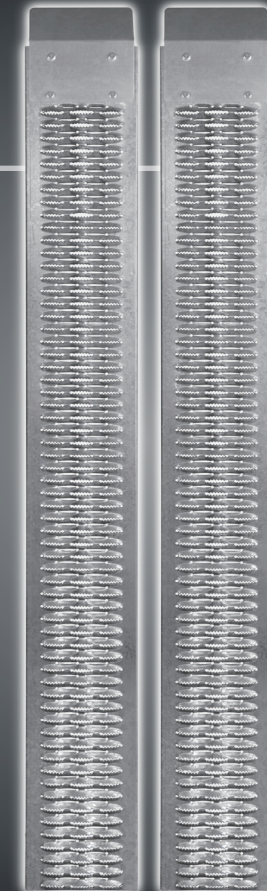


Value you can trust



HEAVY DUTY STEEL LOADING RAMPS

Instruction Manual



PLU 361826

WARRANTY

This product is guaranteed against defects for a period of 12 months from date of purchase. This warranty is provided by Super Cheap Auto Pty Ltd ACN 085 395 124 (Supercheap Auto) of 751 Gympie Rd Lawnton QLD 4501 Ph (07) 3482 7500. Supercheap Auto will offer a repair, replacement product or store credit if the product is assessed as being defective during the warranty period.

To claim under this warranty, take this product to the Front Service Desk of your nearest Supercheap Auto store. For store locations, visit www.supercheapauto.com.au (AUS) or www.supercheapauto.co.nz (NZ). You will need your receipt or proof of purchase. Additional information may be requested of you to process your claim. Should you not be able to provide proof of purchase with a receipt or a bank statement, identification showing your name, address and signature may be required to process your claim.

This product may need to be sent to the manufacturer to assess the defect before determining any claim. Faults or defects caused by product modification, misuse and abuse, normal wear and tear or failure to follow user instructions are not covered under this warranty.

Our goods come with guarantees that cannot be excluded under the Australian Consumer Law. You are entitled to a replacement or refund for a major failure and for compensation for any other reasonably foreseeable loss or damage. You are also entitled to have the goods repaired or replaced if the goods fail to be of acceptable quality and the failure does not amount to a major failure.

Any expenses incurred relating to the return of this product to store will normally have to be paid by you. For more information contact your nearest Supercheap Auto store.

The benefits to the consumer given by this warranty are in addition to other rights and remedies of the Australian Consumer Law in relation to the goods and services to which this warranty relates.

WARNING

To avoid personal injury and/or property damage, please read and follow ALL of these instructions before assembling and operating.

SAFETY INSTRUCTIONS

1. NEVER OVERLOAD RAMPS. MAXIMUM CAPACITY FOR YOUR RAMP IS 200KG PER PIECE; 400KG PER PAIR (ALL LOADS MUST BE EVENLY DISTRIBUTED). CHECK THE RATED CAPACITY OF THE VEHICLE BEFORE USING THE RAMPS. USE ONLY ONE PAIR PER VEHICLE.
2. MAXIMUM RECOMMENDED HEIGHT IS 76CM.
3. Always use safety strap to securely fasten the ramp to the vehicle. This prevents the ramp from slipping off of the tailgate.
4. Carefully roll or winch equipment up or down the ramp.
NEVER DRIVE OR RIDE YOUR EQUIPMENT WHILE LOADING OR UNLOADING.
5. Make sure the ramp is aligned with the wheels of the equipment being loaded or unloaded.
6. Always load or unload on a solid, level and stable surface with the vehicle in gear, the parking/emergency brake on and the engine off.
7. Use as a loading and unloading ramp only.
8. Ramp surfaces must be clean, dry and free from oil or grease or water.
9. Inspect ramps before each use. Do not use if there are broken, bent, cracked or otherwise damaged parts. If the ramps perform abnormally discontinue use. Do not modify or alter the ramps.
Proper care and maintenance of the ramps is essential to safety.

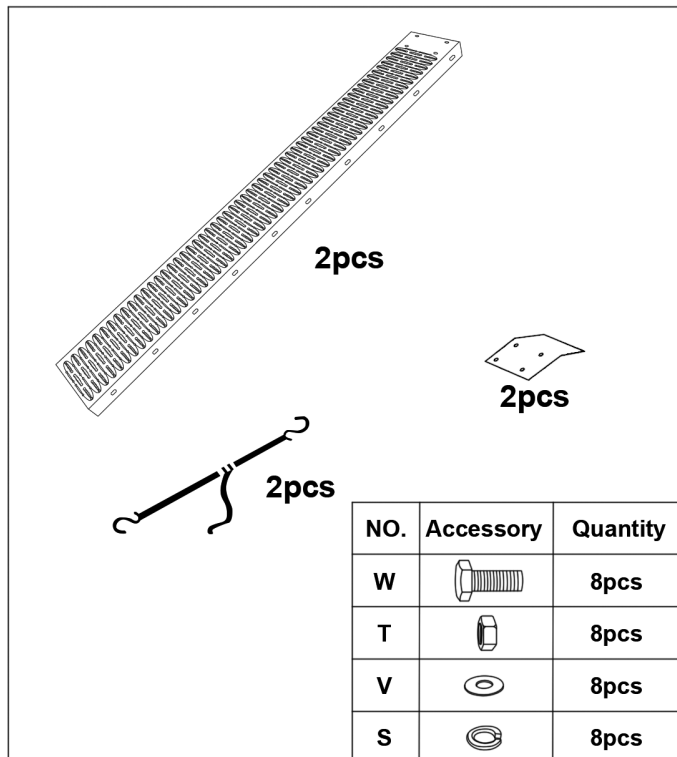
SPECIFICATIONS

Rated Capacity	400kg per pair
Ramp dimensions	183cm x 22.5cm

ASSEMBLY

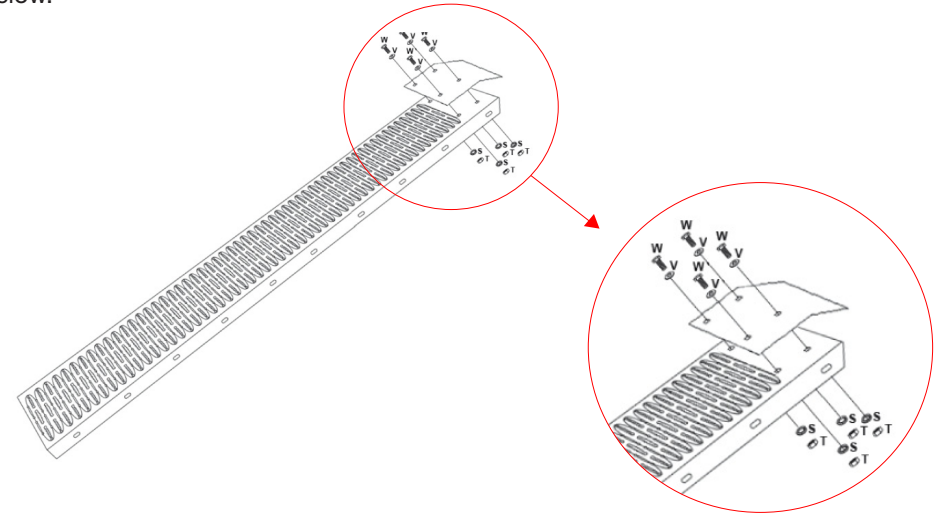
Step 1 Verify all parts are in the list below:

Required Tools (not included): 14mm socket with extension bar and ratchet handle, adjustable wrench.



Step 2 Assemble Each Ramp:

Select the required parts. Then, use required tools to do the assembling as shown below.



USER INSTRUCTIONS

Step 1 Be sure you are loading and unloading onto a hard, level and stable surface and that the vehicle you are loading into is parked with the emergency/parking brake in "Park" and the engine is "off". Unfold and place the lip edge of the ramp against the tailgate of the vehicle. **THE TAILGATE SHOULD NOT BE MORE THAN 76CM IN HEIGHT** or the ramp incline will be too steep. Ensure the ramps are in line with the vehicle being loaded or unloaded.

Step 2 Secure the ramp to the vehicle using the adjustable strap. After the strap is secure, test the ramp by pulling backwards on it. Make sure it does not slide back or disengage from the loading surface.

Step 3 Once the ramp is secure and the area is safe to proceed with loading, move the vehicle to be loaded between the ramps and center the load between both ramp rails.

Step 4 Proceed with loading the vehicle, making sure that ramp is sustaining the load and not bowing from the weight.

Step 5 Continue until the vehicle is fully loaded. Secure the brake and tie down as needed.

Step 6 Unhook the adjustable strap and move the ramp away. Store in a clean, dry and safe place where damage will not occur.

