

TOUCH UP AIR SPRAY GUN INSTRUCTION MANUAL



BLACK RIDGE

Touch Up Air Spray Gun Instruction Manual



12

*Month
Warranty*

*Minimum
65 LPM*

Manufactured and packaged for SUPER CHEAP AUTO PTY LTD ABN 64 085 395 124
751 Gympie Road, Lawnton, Queensland 4501, Australia

WARRANTY

This product is guaranteed against defects for a period of 12 months from date of purchase. This warranty is provided by Super Cheap Auto Pty Ltd ACN 085 395 124 (Supercheap Auto) of 751 Gympie Rd Lawnton QLD 4501 Ph (07) 3482 7500. Supercheap Auto will offer a repair, replacement product or store credit if the product is assessed as being defective during the warranty period.

To claim under this warranty, take this product to the Front Service Desk of your nearest Supercheap Auto store. For store locations, visit www.supercheapauto.com.au (AUS) or www.supercheapauto.co.nz (NZ). You will need your receipt or proof of purchase. Additional information may be requested of you to process your claim. Should you not be able to provide proof of purchase with a receipt or a bank statement, identification showing your name, address and signature may be required to process your claim.

This product may need to be sent to the manufacturer to assess the defect before determining any claim. Faults or defects caused by product modification, misuse and abuse, normal wear and tear or failure to follow user instructions are not covered under this warranty.

Our goods come with guarantees that cannot be excluded under the Australian Consumer Law. You are entitled to a replacement or refund for a major failure and for compensation for any other reasonably foreseeable loss or damage. You are also entitled to have the goods repaired or replaced if the goods fail to be of acceptable quality and the failure does not amount to a major failure.

Any expenses incurred relating to the return of this product to store will normally have to be paid by you. For more information contact your nearest Supercheap Auto store.

The benefits to the consumer given by this warranty are in addition to other rights and remedies of the Australian Consumer Law in relation to the goods and services to which this warranty relates.

ILLUSTRATION



TECHNICAL DATA

Model: T100
Standard Nozzle: 1.5mm
Max Operating Pressure: 50 PSI (3.45 BAR)
Minimum Air Consumption: 65 LPM
Fluid Delivery: 0.16-0.24 LPM
Painting Fan: 160-200mm (at distance of 10")
Cup Size: 200ml
Air Inlet: 1/4"

WARNING

When using the tool, basic safety precautions should always be followed to reduce the risk of personal injury and damage to equipment. Please read all instructions carefully before using this tool.

- Toxic vapors produced by spraying certain materials can create intoxication and serious damage to health. Always wear protective eyewear, gloves and a respirator to prevent the toxic vapor hazard or solvent and paint coming into contact with your eyes and skin.
- Never use oxygen, combustible or any other bottled gas as a power source as it may cause an explosion and serious personal injury.
- Fluid and solvent can be highly flammable or combustible. Use in a well ventilated work area and avoid any ignition sources, such as smoking, open flames and similar hazards.

- Disconnect tool from air supply hose before attempting maintenance and when not in use.
- Use clean, dry, and regulated compressed air rated at 40-70 PSI. Never exceed the maximum operating pressure of 50 PSI.
- Never use homogenate (homogeneous) hydrocarbon solvent, which can chemically react with aluminum and zinc parts.
- Never point gun at yourself or any other person at any time.
- Never modify this tool for any applications. Only use parts, nozzles and accessories recommended by manufacturers.

OPERATION

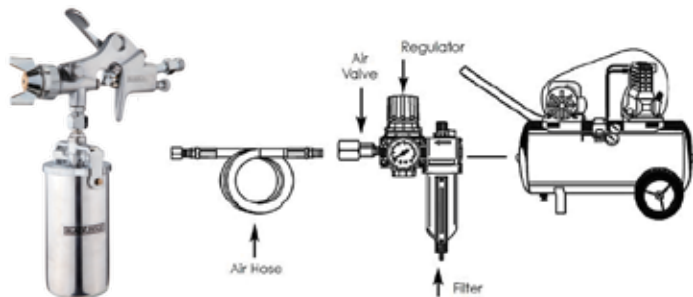
Preparation before operating:

- Put a small amount of thinner into the paint cup.
- Attach the paint cup to the gun and attach to the air line.
- Flush the gun's fluid system out with thinner before attempting to paint.
- Empty thinner and clean paint cup.
- Pour paint into cup, test spray onto a piece of scrap and adjust fluid output and pattern as desired.

WARNING: When filling or refilling the material, disconnect your gun from the air supply to avoid accidental spillage or spraying.

Operating:

Recommended air line components (for best results you should incorporate an air regulator with filter).



NOTE: Thin paint to manufacturer's specification to ensure a good finish.

- Set the appropriate distance of 6" to 12" from the gun to the work piece, relevant to the atomisation pressure and work demand.
- Keep the gun perpendicular to the surface of the work piece at all times, and move the gun in a straight and horizontal line.

ADJUSTMENT:

The desired pattern, volume of fluid output and fine atomisation can easily be obtained by tuning the fan adjusting knob, air adjusting knob and fluid adjusting knob.

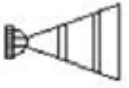
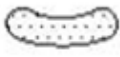




TYPE	ACTION	RESULT
Fan adjusting knob	Turn right.	Pattern is round.
	Turn left.	Pattern is fan.
Needle adjusting knob	Turn right.	Decrease fluid output.
	Turn left.	Increase fluid output.

MAINTENANCE

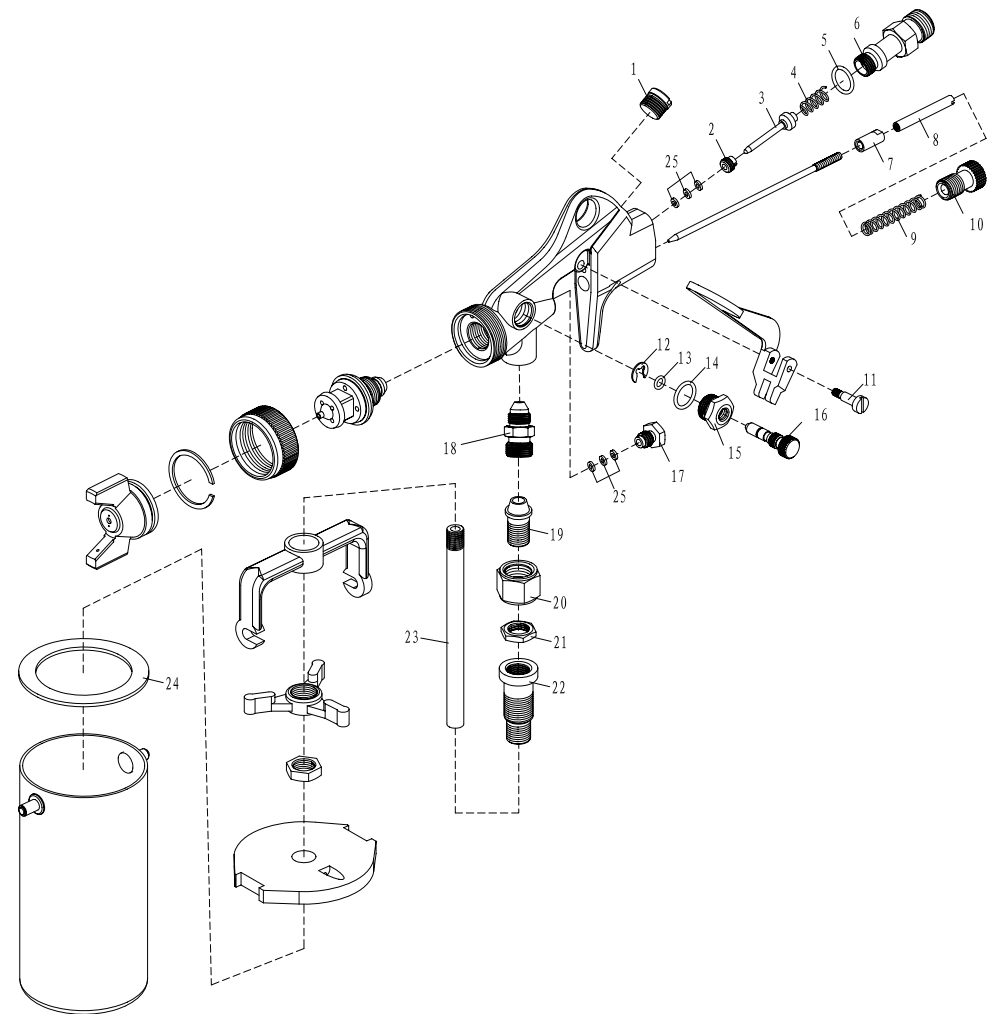
- Pour remaining paint into another container and then clean paint cup and air nozzle. Spray a small amount of thinner to clean the passage. Incomplete cleaning will cause an adverse pattern shape. Clean thoroughly, immediately after use.
- Clean other sections with a cloth soaked with thinner.
- Ensure paint passages have been completely cleaned before disassembly.
- Remove fluid nozzle after removing fluid needle set or while keeping fluid needle pulled, in order to protect seat section.

CAUTION: Never use wire or other hard objects to clear the nozzle and clean the fluid needle. This will cause damage to the components. Never immerse the whole gun into solvent such as thinner as it will damage the air nozzle, fluid nozzle and needle.

TROUBLESHOOTING

SPRAY PATTERN	REASON	SOLUTION
 Fluttering	Air enters between the fluid nozzle and tapered seat of the gun body.	Remove the fluid nozzle and clean the seat. Replace if damaged.
	Air is suctioned from fluid needle packaging.	Tighten fluid needle packaging.
 Crescent	Paint build up on air nozzle partially clogs horn holes. Air pressure from each horn is different.	Remove obstructions from horn holes. Do not use metal objects to clean horn holes.
 Inclined	Paint build up on the periphery of the fluid nozzle hole or centre hole of air nozzle damaged.	Remove obstructions or replace if necessary.
	Loose fluid nozzle.	Remove fluid nozzle, clean and replace.
 Split	Paint viscosity too low.	Add paint to increase viscosity.
	Fluid output too high.	Adjust the needle adjustable knob or fan adjustable knob.
 Heavy	Paint viscosity too high.	Add thinner to reduce viscosity.
	Fluid output too low.	Adjust the needle adjustable knob or fan adjustable knob.
 Spit	Fluid nozzle and fluid needle seat are not seating properly.	Clean or replace fluid nozzle and fluid needle set.
	The first-stage travel of trigger (when only air discharges) decreases.	Replace fluid nozzle and fluid needle set.
	Paint build-up inside air nozzle set.	Clean air nozzle set.

PARTS LIST



No.	Description	Quantity	No.	Description	Quantity
1	Sealing Screw	1	14	O-ring 6.0x1.5	1
2	Air Valve Sealing Screw	1	15	Pattern Adj. Seat	1
3	Air Valve Stem	1	16	Pattern Adj. Spring	1
4	Air Valve Spring	1	17	Needle Sealing Screw	1
5	O-ring 5.0*1.8	1	18	Material Passage Connector	1
6	Air Joint	1	19	Connector Screw	1
7	Needle Adj. Seat	1	20	Connector Nut	1
8	Throw-out Lever	1	21	Hexagon Nut	1
9	Needle Spring	1	22	Material Tube	1
10	Needle Adj. Knob	1	23	Material Tube	1
11	Trigger Pin	1	24	Sealing Gasket	1
12	Opening Stopper 3.5	1	25	Sealing Gasket	6
13	O-ring 3.5x1.8	1			

NOTE:

When spray painting consider the size of the job and the size of your air compressor being used. When spray painting large jobs like a fence or car, a Belt Drive Air compressor is recommended. Always refer to the duty cycle of your air compressor before spray painting.