

PRO GRAVITY FEED AIR SPRAY GUN INSTRUCTION MANUAL



BLACK RIDGE

PRO Gravity Feed Air Spray Gun Instruction Manual



12

Month
Warranty

Minimum
100LPM

Manufactured and packaged for SUPER CHEAP AUTO PTY LTD ABN 64 085 395 124
751 Gympie Road, Lawnton, Queensland 4501, Australia

WARRANTY

This product is guaranteed against defects for a period of 12 months from date of purchase. This warranty is provided by Super Cheap Auto Pty Ltd ACN 085 395 124 (Supercheap Auto) of 751 Gympie Rd Lawnton QLD 4501 Ph (07) 3482 7500. Supercheap Auto will offer a repair, replacement product or store credit if the product is assessed as being defective during the warranty period.

To claim under this warranty, take this product to the Front Service Desk of your nearest Supercheap Auto store. For store locations, visit www.supercheapauto.com.au (AUS) or www.supercheapauto.co.nz (NZ). You will need your receipt or proof of purchase. Additional information may be requested of you to process your claim. Should you not be able to provide proof of purchase with a receipt or a bank statement, identification showing your name, address and signature may be required to process your claim.

This product may need to be sent to the manufacturer to assess the defect before determining any claim. Faults or defects caused by product modification, misuse and abuse, normal wear and tear or failure to follow user instructions are not covered under this warranty.

Our goods come with guarantees that cannot be excluded under the Australian Consumer Law. You are entitled to a replacement or refund for a major failure and for compensation for any other reasonably foreseeable loss or damage. You are also entitled to have the goods repaired or replaced if the goods fail to be of acceptable quality and the failure does not amount to a major failure.

Any expenses incurred relating to the return of this product to store will normally have to be paid by you. For more information contact your nearest Supercheap Auto store.

The benefits to the consumer given by this warranty are in addition to other rights and remedies of the Australian Consumer Law in relation to the goods and services to which this warranty relates.

ILLUSTRATION



THE BLACKRIDGE Professional Gravity Feed Spray Gun is designed to be lightweight, stylish, comfortable, compact, easy to operate, and to provide a superior finish while saving paint at the same time. This gun is suited to automotive, furniture, machinery, house, and building painting applications.

TECHNICAL DATA

Model: RF901AG

Type of feed: Gravity

Material Fluid Nozzle Diameter: 1.4mm

Max Operating Pressure: 40 PSI (2.7 BAR)

Minimum Air Consumption: 100 LPM

Fluid Delivery: 0.13-0.18 LPM

Painting Fan: 160mm - 200mm

Cup Size: 600ml

Air Inlet: 1/4"

Accessory: Wrench brush

WARNING

Fire or explosion hazard:

- Fluid and solvents can be highly flammable or combustible:
 - Use in a well ventilated spray booth.
 - Avoid any ignition sources such as smoking, open flames, electrical hazard, etc.
- Never use halogenated hydrocarbon solvents (1,1,1-trichloroethane, ethyl chloride, etc.) which can chemically react with aluminum and zinc parts and cause an explosion.
 - Be sure that all fluids and solvents used are chemically compatible with aluminum and zinc parts.
- To reduce the risk of static sparking, grounding continuity to the spray equipment and object being sprayed must be maintained.

Misuse hazard:

- Never point the gun in the direction of a human body.
- Never exceed the maximum safe working pressure of the equipment.
- Always release air and fluid pressure before cleaning, disassembling or servicing.
- For emergency stop and prevention of unintended operation, a ball valve installation near the gun to stop the air supply is recommended.

Hazard created while coating material is atomised and sprayed:

- Toxic vapours produced by spraying certain materials can create intoxication and serious damage to health.
 - Use the gun in well-ventilated areas.
 - Always wear protective eyewear, gloves, respirator, etc. to prevent the toxic vapour, solvents and paint from coming into contact with your eyes or skin.
- Noise level mentioned in main specifications was measured at 1m behind the tip of the gun, 1.6m high from floor.
 - Wear earplugs if required.

Other hazards:

- Never modify this product for any application.
- Never spray foods or dangerous chemicals through the spray gun.

OPERATION

Preparation before operating:

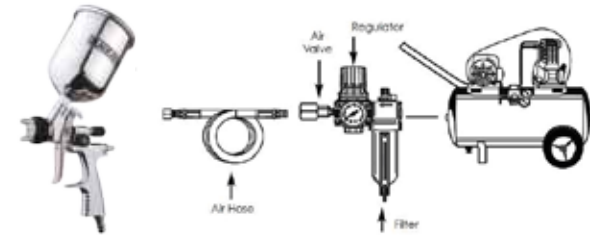
- Check and replace any damaged or worn parts.
- Make sure the nozzle and air trigger are free to operate correctly.
- Pour paint into the paint cup.

- Attach the cup to the spray gun. Make sure the lid is securely tightened and the vent tube is secured.

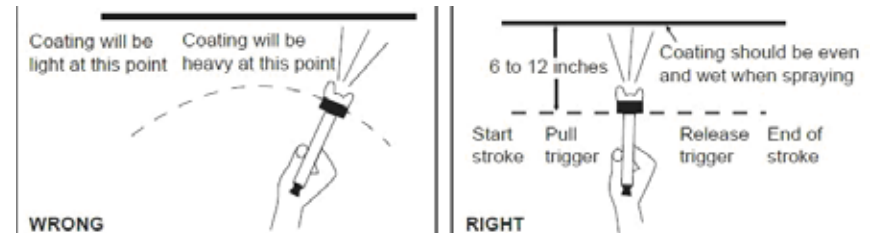
WARNING: When filling or refilling the material, disconnect your gun from the air supply to avoid accidental spillage or spraying.

Operating:

Recommended air line components (for best results you should incorporate an air regulator with filter).



- Connect the air source hose to the gun. Make sure the air pressure does not exceed 40 PSI (2.7 BAR).
- Pull the trigger slowly and move the spray gun in parallel strokes to the object being painted. Keep the appropriate distance of 6" – 12" between the gun and the spraying area. This may differ slightly depending on the flow adjustment and the material being sprayed.
- Release the trigger after each forward movement; pull the trigger again on the return movement.
- When using a vertical pattern, move the spray gun in a horizontal motion; with a horizontal pattern move the spray gun in a vertical motion. A round pattern requires a greater distance from the object being painted.



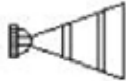




- When finished, release the trigger and disconnect from the air source. The cup and spray gun may still hold air pressure; fire the spray gun toward scrap material until all of the pressure is extended. Open the vent before removing the lid to make sure there is no remaining pressure.

MAINTENANCE

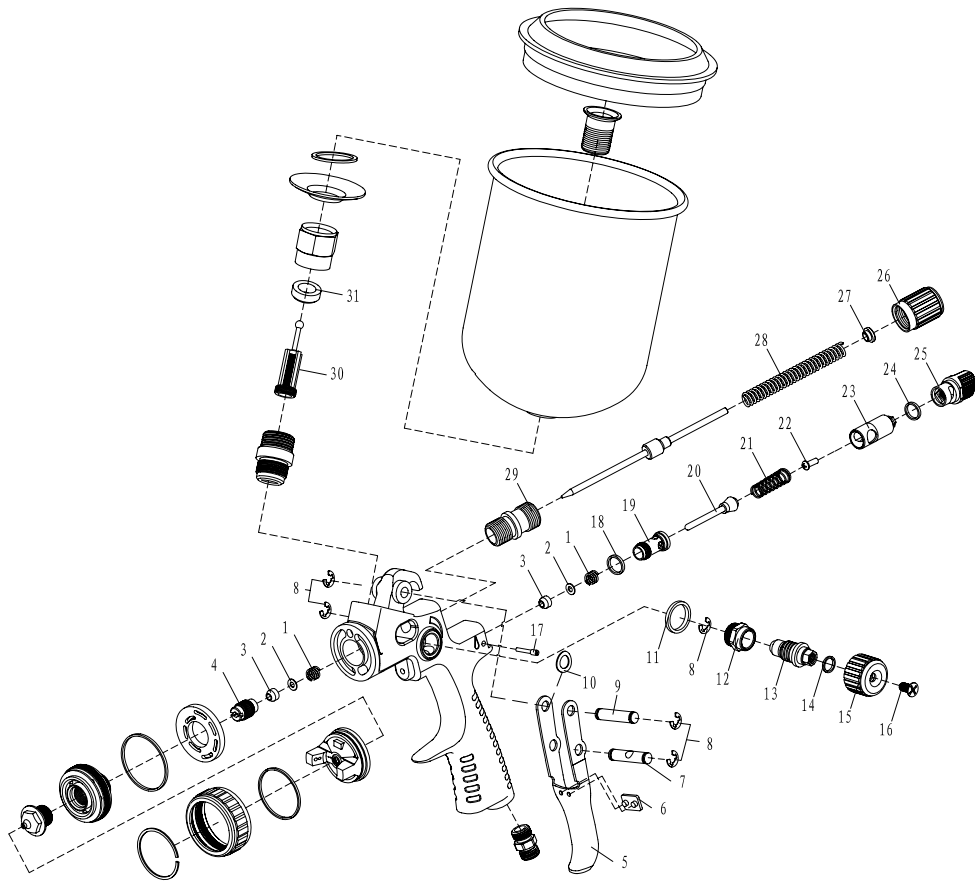
WARNING:

- Turn off air and coating materials to the gun and release pressure by triggering the gun before disassembling, cleaning or servicing.
 - Be careful when disassembling the spray gun it contains sharp parts.
 - If unsure, please take the spray gun to a qualified technician for repair.
-
- Pour remaining paint into another container and then clean the paint passages and air nozzle. Spray a small amount of thinner to clean paint passages, incomplete cleaning will cause adverse pattern shape and particles. Always clean spray guns thoroughly, immediately after use. If using two-component paint, ensure the gun is cleaned thoroughly, immediately after use.
 - Clean other sections with a brush soaked with thinner and waste cloth.
 - Clean paint passage fully before disassembly.
 - Remove fluid nozzle after removing fluid needle set or while keeping fluid needle pulled in order to protect seat section.
 - While keeping fluid needle packing set by hand, then tighten gradually by spanner.
 - Adjust packing set while pulling trigger and watching movement of fluid needle set since too much tightening will slow down movement of fluid needle and re

TROUBLESHOOTING

SPRAY PATTERN	REASON	SOLUTION
 Ring or Fluttering	Air enters between the fluid nozzle and tapered seat of the gun body.	Remove the fluid nozzle and clean the seat. Replace if damaged.
	Air enters near the needle sealing nut.	Tighten the needle sealing nut.
	Air enters between material passage connector and cup.	Assemble and tighten the relative parts again after cleaning.
 Crescent	Paint build up on air nozzle partially clogs horn holes. Air pressure from each horn is different.	Remove obstructions from horn holes. Do not use metal objects to clean horn holes.
 Inclined	Paint build up on the periphery of the fluid nozzle hole or centre hole of air nozzle damaged.	Remove obstructions or replace if necessary.
	Loose fluid nozzle.	Remove fluid nozzle, clean and replace.
 Split	Paint viscosity too low.	Add paint to increase viscosity.
	Fluid output too high.	Adjust the fluid adjustment knob or pattern adjustment knob.
 Heavy	Paint viscosity too high.	Add thinner to reduce viscosity.
	Fluid output too low.	Adjust the spray adjustment valve to allow more fluid output.

PARTS LIST



No.	Description	Quantity	No.	Description	Quantity
1	Needle Sealing Spring	2	17	Staid Bolt	1
2	Needle Sealing Spring Gasket	2	18	Seal Ring	1
3	Rubber Sleeve	2	19	Air Valve Body	1
4	Sealing Screw	1	20	Air Valve Stem	1
5	Trigger	1	21	Air Valve Spring	1
6	Elastic Packing	1	22	Bolt M4x8	1
7	Flexible Pin	1	23	Airflow Adj. Seat	1
8	Opening Stopper 4	5	24	Airflow Adj. Sealing Gasket	1
9	Trigger Pin	1	25	Airflow Adj. Knob	1
10	Backing Ring	1	26	Needle Adj. Knob	1
11	Pattern Adj. Seat Gasket	1	27	Needle Spring Seat	1
12	Pattern Adj. Seat	1	28	Needle Adj. Spring	1
13	Pattern Adj. Stem	1	29	Needle Adj. Seat	1
14	Pattern Adj. Seat Gasket	1	30	Filter	1
15	Pattern Adj. Knob	1	31	Cup Sealing Gasket	1
16	Bolt M4x8	1			

NOTE:

When spray painting consider the size of the job and the size of your air compressor being used. When spray painting large jobs like a fence or car, a Belt Drive Air compressor is recommended. Always refer to the duty cycle of your air compressor before spray painting.