

LOW PRESSURE AIR SPRAY GUN INSTRUCTION MANUAL



BLACK RIDGE

Low Pressure Air Spray Gun Instruction Manual



12

Month
Warranty

Minimum
60LPM

Manufactured and packaged for SUPER CHEAP AUTO PTY LTD ABN 64 085 395 124
751 Gympie Road, Lawnton, Queensland 4501, Australia

WARRANTY

This product is guaranteed against defects for a period of 12 months from date of purchase. This warranty is provided by Super Cheap Auto Pty Ltd ACN 085 395 124 (Supercheap Auto) of 751 Gympie Rd Lawnton QLD 4501 Ph (07) 3482 7500. Supercheap Auto will offer a repair, replacement product or store credit if the product is assessed as being defective during the warranty period.

To claim under this warranty, take this product to the Front Service Desk of your nearest Supercheap Auto store. For store locations, visit www.supercheapauto.com.au (AUS) or www.supercheapauto.co.nz (NZ). You will need your receipt or proof of purchase. Additional information may be requested of you to process your claim. Should you not be able to provide proof of purchase with a receipt or a bank statement, identification showing your name, address and signature may be required to process your claim.

This product may need to be sent to the manufacturer to assess the defect before determining any claim. Faults or defects caused by product modification, misuse and abuse, normal wear and tear or failure to follow user instructions are not covered under this warranty.

Our goods come with guarantees that cannot be excluded under the Australian Consumer Law. You are entitled to a replacement or refund for a major failure and for compensation for any other reasonably foreseeable loss or damage. You are also entitled to have the goods repaired or replaced if the goods fail to be of acceptable quality and the failure does not amount to a major failure.

Any expenses incurred relating to the return of this product to store will normally have to be paid by you. For more information contact your nearest Supercheap Auto store.

The benefits to the consumer given by this warranty are in addition to other rights and remedies of the Australian Consumer Law in relation to the goods and services to which this warranty relates.

ILLUSTRATION



TECHNICAL DATA

Model: 472E

Nozzle Size: 1.5mm (standard)

Max Operating Pressure: 30 PSI

Minimum Air Consumption: 60 LPM

Fluid Delivery: 0.18-0.24 LPM

Painting Fan: 160-180mm (at distance of 10")

Cup Size: 600ml

Air Inlet: 1/4"

WARNING

When using the tool, basic safety precautions should always be followed to reduce the risk of personal injury and damage to equipment. Please read all instructions carefully before using this tool.

- **WORK AREA CONDITIONS.** Cluttered areas invite injuries. Avoid any ignition sources, such as smoking, open flames and similar hazards.
- **ADDITIONAL WORK AREA CONDITIONS.** Do not use machines or power tools in damp or wet locations. Do not expose to rain. Keep work area well lighted.
- **KEEP CHILDREN AWAY.** Children should not be allowed in the work area. Do not let them handle machines, tools or extension cords.
- **STORE IDLE EQUIPMENT.** When not in use, tools must be stored in a dry location to inhibit rust or corrosion. Always lock up tools and keep out of reach of children.
- **USE THE RIGHT TOOL FOR THE JOB.** Always use the tool for the specific purpose it was intended.
- **DRESS PROPERLY.** Always wear the appropriate clothing suited to the painting application.
- **WEAR EYE PROTECTION.** Always wear appropriate eye protection when operating a spray gun.
- **DO NOT OVER-REACH.** Keep proper footing and balance at all times. Do not reach over or across running machines.
- **STAY ALERT.** Watch what you are doing and use common sense. Do not operate any tools when you are tired.
- **CHECK FOR DAMAGED PARTS.** Before using any tool, any part that appears damaged should be carefully checked to determine if it will operate properly and perform its intended function. Any part that is damaged should be replaced.
- **REPLACEMENT PARTS AND ACCESSORIES.** When servicing, use only identical replacement parts.
- **DO NOT OPERATE TOOLS IF UNDER THE INFLUENCE OF ALCOHOL OR DRUGS.** Read warning labels on prescriptions to determine if your judgement or reflexes are impaired while taking drugs. If there is any doubt, do not operate the tool.

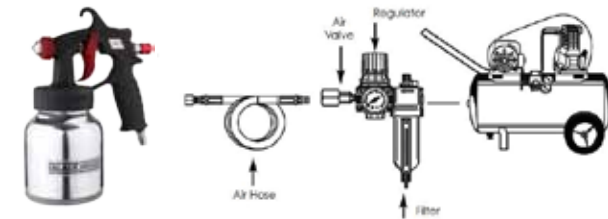
OPERATION:

Preparation before operating:

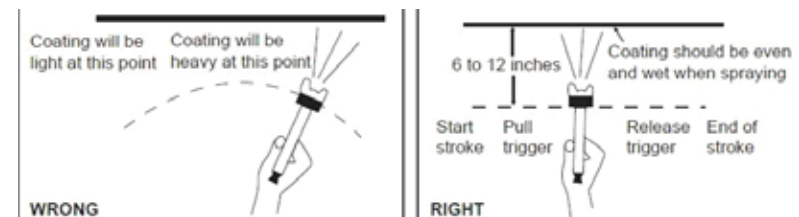
- Thoroughly mix the material, adding thinners as indicated by a paint manufacturer or as desired. If the material appears too thick, add a little more thinner. Always test and set your spray pattern on a piece of scrap material prior to applying to your work piece or job surface. Be sure the material you spraying is clean and free from lumps.
- Attach an air hose to the spray gun handle via the fitting. Make sure there are no air leaks.
- Fill the cup 3/4 full. Screw cup onto the spray gun and make sure it is sealed well.
- When spraying it is important to have your compressor in a well ventilated area away from where you are spraying to avoid damage to the compressor. This damage can be caused by blocked filters due to overspray being drawn into the filter.

WARNING: When filling or refilling the material, disconnect your gun from the air supply to avoid accidental spillage or spraying.

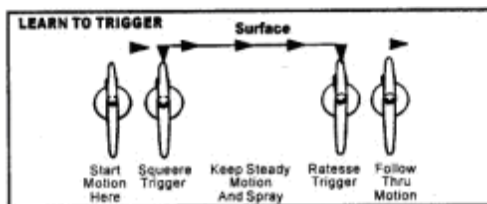
Recommended air line components (for best results you should incorporate an air regulator with filter as illustrated below).



- Connect the gun to the air supply and make sure the air pressure does not exceed 30 PSI.
- Keep the gun at the right angles to your work. Keep the spray gun parallel to the work surface at a distance of about 6" to 12". Refer to illustration below:



- Learn to “trigger” your gun to start and stop the material properly. This means the gun must be moving at the beginning of the stroke before the trigger is pulled. Likewise the trigger must be released before the gun stops moving at the end of the stroke. Refer to illustration below:



- Overlap your strokes on a flat surface just enough to secure an even coating. A few strokes on your practice sheets will quickly develop the needle skill.
- Mask up the area that is not to be painted with paper and masking tape to catch over spray.
- Different air nozzles are used for different work surfaces:

Fan Nozzle

- Best for large flat surfaces such as walls, solid board fences, truck bodies and industrial buildings.



Round Nozzle

- For odd-shaped pieces such as chairs, bicycles, car body panels, toys and small furniture items.



MAINTENANCE

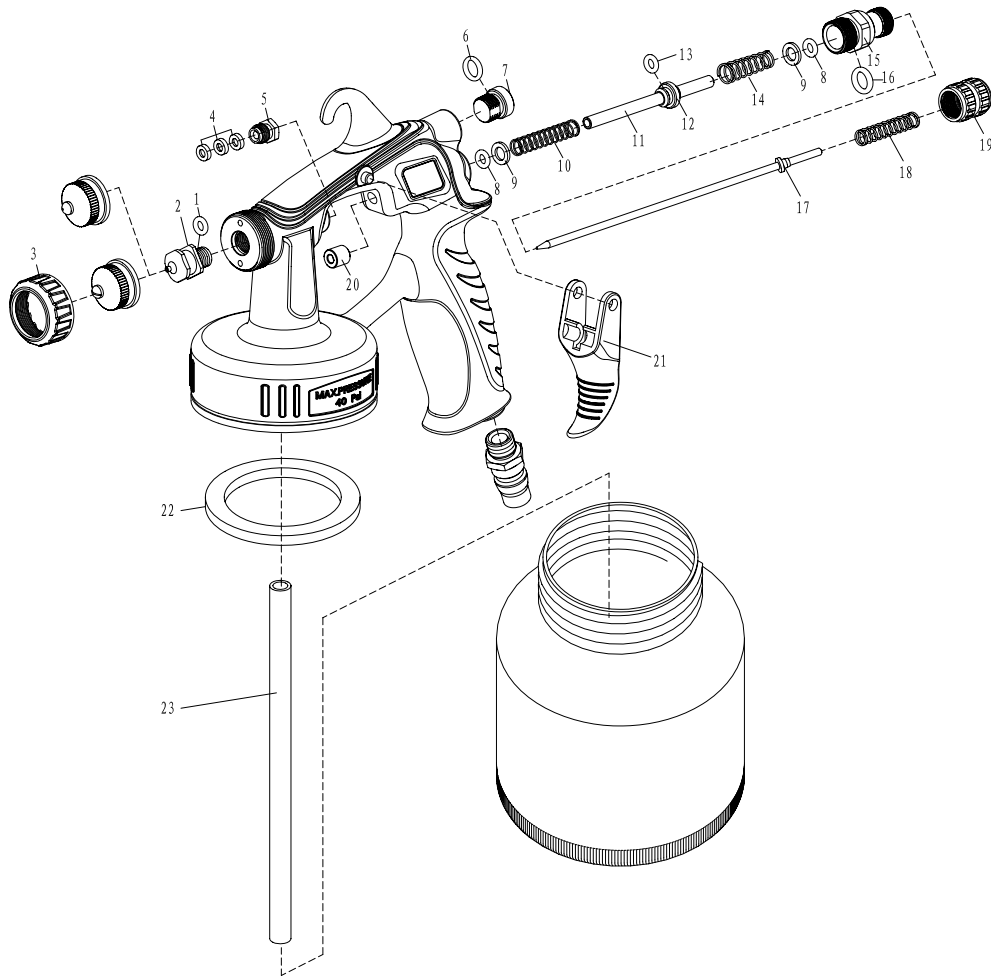
NOTE: Spray guns must be thoroughly cleaned after use, as paint materials dry quickly in nozzle passages.

- To clean the spray gun, empty and wipe out the cup. Pour a small amount of solvent or thinner in the cup, screw on tight, and hold trigger open until the thinner has been blown through the nozzle. The gun should be shaken when doing this to thoroughly wash out the cup.
- Stopping and releasing the spray at the nozzle by placing the finger tip over the nozzle will cause the thinner to surge violently, and helps clean the material passage in the gun.
- Wipe off the internal mix nozzle, liquid nozzle and cup with a soft cloth that has been moistened with solvent.

TROUBLESHOOTING

PROBLEM	POSSIBLE CAUSES
If gun does not operate properly, check for:	Air leaks. Improperly prepared materials. Improperly cleaned gun.
If material sags or runs:	Material may be too thin. Gun may be stroked too slowly. Gun may be held too close to the work. Trigger may be adjusted for too dense a spray.
If material is hard to spray, check for:	Air leaks. Thick or unstrained material.
If spray pattern is distorted, look for:	Accumulation of material on end of liquid nozzle. Clogged internal mix nozzle. Foreign matter in material. Gun held at angle to surface.
If gun does not spray, look for:	Loose air hose connections at gun or compressor. Loose paint cup. Clogged passages in liquid tube or liquid nozzle Loose or damaged liquid tube. Loose damaged, or clogged internal mix nozzle.
If spray pattern flutters, look for:	Loose paint cup or liquid tube. Dry or worn packing. Loose packing. Improperly strained or thinned material. Gun tipped too far, allowing air to enter liquid tube along with paint.

PARTS LIST



No.	Description	Quantity	No.	Description	Quantity
1	O-ring 5*1.5	1	13	O-ring 6.0*2	1
2	Material Nozzle	1	14	Needle Socket Spring	1
3	Locking Knob	1	15	Needle Adj. Seat	1
4	Sealing Gasket	3	16	O-ring 9*1.5	1
5	Needle Sealing Screw	1	17	Needle Seat	1
6	O-ring 4*2	1	18	Needle Adj. Spring	1
7	Sealing Screw	1	19	Needle Adj. Knob	1
8	O-ring 4*2	2	20	Needle Socket Seat	1
9	Gasket 5	2	21	Trigger	1
10	Needle Socket Spring	1	22	Sealing Gasket	1
11	Needle Socket	1	23	Material Tube(A)	1
12	Spring Seat	1			

NOTE:

When spray painting consider the size of the job and the size of your air compressor being used. When spray painting large jobs like a fence or car, a Belt Drive Air compressor is recommended. Always refer to the duty cycle of your air compressor before spray painting.