

**HIGH PRESSURE HEAVY DUTY AIR SPRAY GUN
INSTRUCTION MANUAL**



BLACK RIDGE

**High Pressure Heavy Duty Air Spray Gun
Instruction Manual**



12

Month
Warranty

Minimum
110LPM

Manufactured and packaged for SUPER CHEAP AUTO PTY LTD ABN 64 085 395 124
751 Gympie Road, Lawnton, Queensland 4501, Australia

WARRANTY

This product is guaranteed against defects for a period of 12 months from date of purchase. This warranty is provided by Super Cheap Auto Pty Ltd ACN 085 395 124 (Supercheap Auto) of 751 Gympie Rd Lawnton QLD 4501 Ph (07) 3482 7500. Supercheap Auto will offer a repair, replacement product or store credit if the product is assessed as being defective during the warranty period.

To claim under this warranty, take this product to the Front Service Desk of your nearest Supercheap Auto store. For store locations, visit www.supercheapauto.com.au (AUS) or www.supercheapauto.co.nz (NZ). You will need your receipt or proof of purchase. Additional information may be requested of you to process your claim. Should you not be able to provide proof of purchase with a receipt or a bank statement, identification showing your name, address and signature may be required to process your claim.

This product may need to be sent to the manufacturer to assess the defect before determining any claim. Faults or defects caused by product modification, misuse and abuse, normal wear and tear or failure to follow user instructions are not covered under this warranty.

Our goods come with guarantees that cannot be excluded under the Australian Consumer Law. You are entitled to a replacement or refund for a major failure and for compensation for any other reasonably foreseeable loss or damage. You are also entitled to have the goods repaired or replaced if the goods fail to be of acceptable quality and the failure does not amount to a major failure.

Any expenses incurred relating to the return of this product to store will normally have to be paid by you. For more information contact your nearest Supercheap Auto store.

The benefits to the consumer given by this warranty are in addition to other rights and remedies of the Australian Consumer Law in relation to the goods and services to which this warranty relates.

ILLUSTRATION



TECHNICAL DATA

Model:	S-770S
Standard Nozzle:	2.0mm (nozzle size range: 1.5-2.0mm)
Max Operating Pressure:	50 PSI (3.45 BAR)
Minimum Air Consumption:	110 LPM
Fluid Delivery:	0.24-0.30 LPM
Painting Fan:	180-220mm (at distance of 10")
Cup Size:	1000ml
Air Inlet:	1/4"

WARNING

When using the tool, basic safety precautions should always be followed to reduce the risk of personal injury and damage to equipment. Please read all instructions carefully before using this tool.

- **WORK AREA CONDITIONS.** Cluttered areas invite injuries. Avoid any ignition sources, such as smoking, open flames and similar hazards.
- **ADDITIONAL WORK AREA CONDITIONS.** Do not use machines or power tools in damp or wet locations. Do not expose to rain. Keep work area illuminated.
- **KEEP CHILDREN AWAY.** Children should not be allowed in the work area. Do not let them handle machines, tools or extension cords.
- **STORE IDLE EQUIPMENT.** When not in use, tools must be stored in a dry location to inhibit rust or corrosion. Always lock up tools and keep out of reach of children.
- **USE THE RIGHT TOOL FOR THE JOB.** Always use the tool for the specific purpose it was intended.
- **DRESS PROPERLY.** Always wear the appropriate clothing suited to the painting application.

- **WEAR EYE PROTECTION.** Always wear appropriate eye protection when operating a spray gun.
- **DO NOT OVER-REACH.** Keep proper footing and balance at all times. Do not reach over or across running machines.
- **STAY ALERT.** Watch what you are doing and use common sense. Do not operate any tools when you are tired.
- **CHECK FOR DAMAGED PARTS.** Before using any tool, any part that appears damaged should be carefully checked to determine if it will operate properly and perform its intended function. Any part that cannot fulfill its intended purpose should be replaced.
- **REPLACEMENT PARTS AND ACCESSORIES.** When servicing, use only identical replacement parts.
- **DO NOT OPERATE TOOLS IF UNDER THE INFLUENCE OF ALCOHOL OR DRUGS.** Read warning labels on prescriptions to determine if your judgement or reflexes will be impaired while taking drugs. If there is any doubt, do not operate the tool.

OPERATION

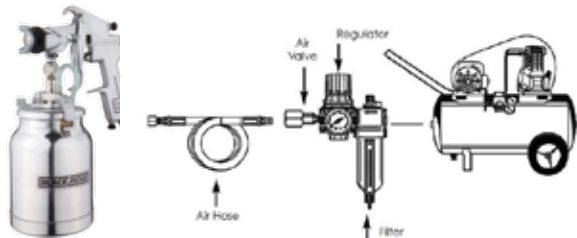
Preparation before operating:

- Check and replace any damaged or worn parts.
- Make sure the nozzle and air trigger are free to operate correctly.
- Pour paint into the paint cup.
- Attach the cup to the spray gun. Make sure the lid is securely tightened and the vent tube is secured.

WARNING: When filling or refilling the material, disconnect your gun from the air supply to avoid accidental spillage or spraying.

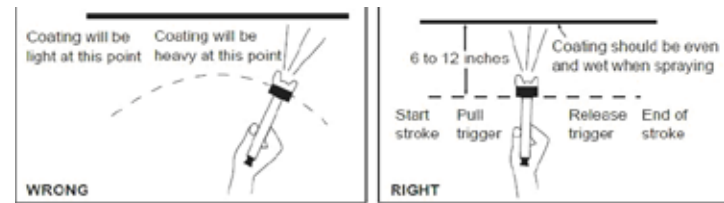
Operating:

Recommended air line components (for best results you should incorporate an air regulator with filter).



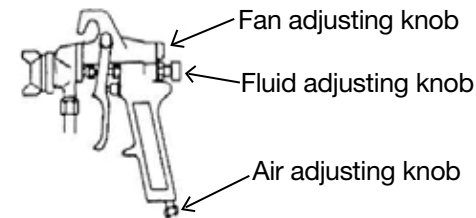
- Connect the air source hose to the gun. Make sure the air pressure does not exceed 50 PSI (3.45 BAR).
- Hold the gun perpendicular to the spraying area and then move it parallel several times.
- The stroke should be started before the trigger is pulled and the trigger should be released before the stroke is ended. This can control the gun and material.
- Keep the appropriate distance of 6" to 12" between the gun and spraying area, according to the atomisation pressure and work demand.

NOTE: To reduce overspray and obtain maximum efficiency, always spray with the lowest possible atomisation fluid pressure.



ADJUSTMENT:

The desired pattern, volume of fluid output and fine atomisation can easily be obtained by tuning the fan adjusting knob, fluid adjusting knob and air adjusting knob.



TYPE	ACTION	RESULT
Fan adjusting knob	Turn right.	Pattern is round.
	Turn left.	Pattern is fan.
Fluid adjusting knob	Turn right.	Decrease fluid output.
	Turn left.	Increase fluid output.
Air adjusting knob	Turn right.	Decrease air volume.
	Turn left.	Increase air volume.

MAINTENANCE

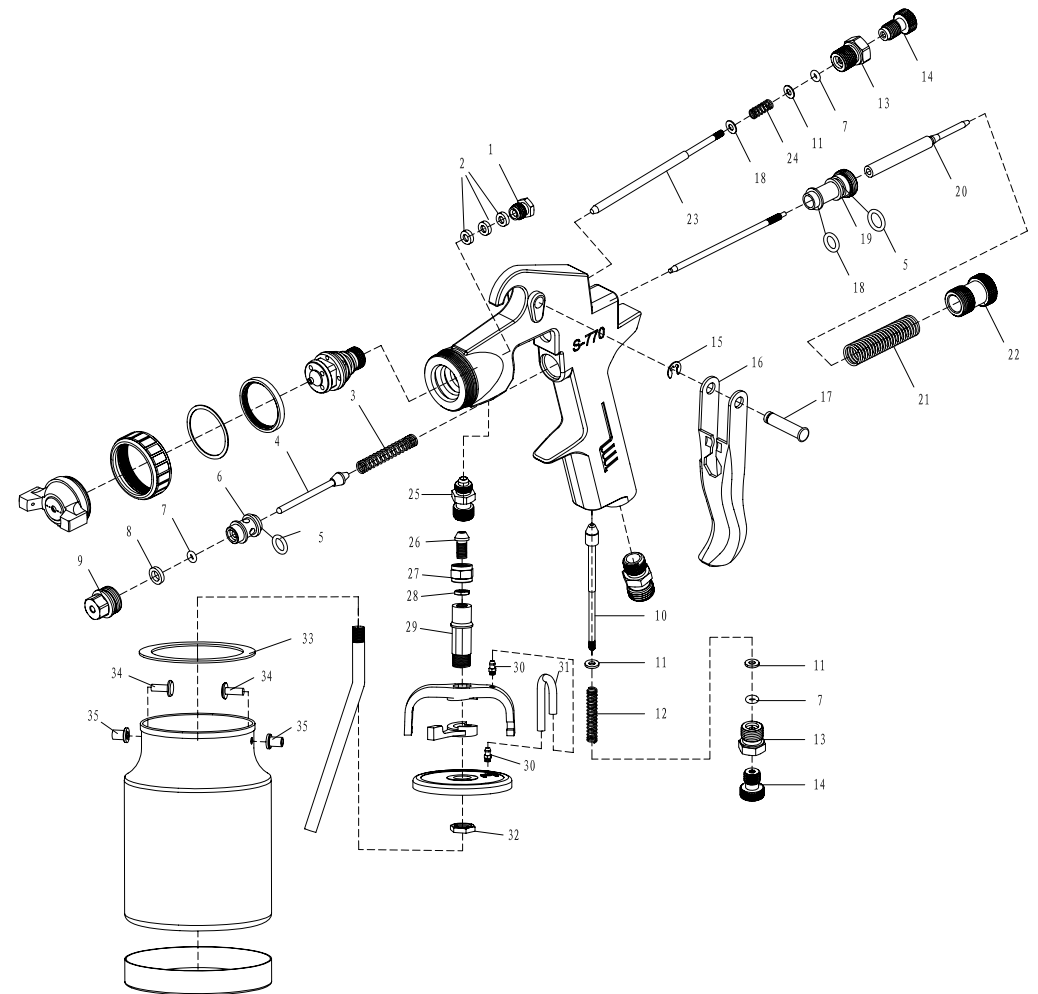
- Pour remaining paint into another container and then clean paint cup and air nozzle. Spray a small amount of thinner to clean the passage. Incomplete cleaning will cause an adverse pattern shape. Clean thoroughly, immediately after use.
- Clean other sections with a cloth soaked with thinner.
- Ensure paint passages have been completely cleaned before disassembly.
- Remove fluid nozzle after removing fluid needle set or while keeping fluid needle pulled, in order to protect seat section.

CAUTION: Never use wire or other hard objects to clear the nozzle or clean the fluid needle. This will cause damage to the components. Never immerse the whole gun into solvent such as thinner as it will damage the air nozzle, fluid nozzle and needle.

TROUBLESHOOTING

PROBLEM	CAUSE	SOLUTION
Spray gun spits.	Loose fluid nozzle.	Tighten securely.
	Needle adjustment knob loose.	Tighten.
	Loose cup lid.	Tighten.
Spray gun fails to spray.	Vent hole on cover or fluid connecting nut clogged.	Dismantle and clean, thin paint as required.
	Thick paint.	Dilute or use bigger capacity fluid nozzle.
	Nozzle clogged.	Disassemble and clean.
Escape of air when the trigger is released.	Air needle not sliding.	Oil slightly.
	Air valve sealing seat too tight.	Loosen.

PARTS LIST



No.	Description	Quantity	No.	Description	Quantity
1	Sealing Screw	1	18	O Ring 6x2.0	1
2	Sealing Gasket	3	19	Needle Socket	1
3	Air Valve Spring	1	20	Needle Seat	1
4	Air Valve Stem	1	21	Needle Adj. Spring	1
5	O Ring 7.5x1.8	2	22	Needle Adj. Knob	1
6	Air Valve Body	1	23	Pattern Adj. Stem	1
7	O Ring 2.5x1.8	3	24	Pattern Adj. Spring	1
8	Sealing Gasket	1	25	Material Passage Connector	1
9	Air Valve Seat	1	26	Bolt M9x1 (B)	1
10	Airflow Adj. Stem	1	27	Hexagon Coupling Nut	1
11	Gasket 3	4	28	Hexagon Nut	1
12	Airflow Adj. Spring	1	29	Material Tube	1
13	Airflow Adj. Seat	2	30	Air Screw	2
14	Airflow Adj. Knob	2	31	Air Tube	1
15	Opening Stopper 4.0	1	32	Hexagon Locking Nut	1
16	Trigger	1	33	Sealing Gasket	1
17	Trigger Pin	1	34	Rivet	2
			35	Rivet	2

NOTE:

When spray painting consider the size of the job and the size of your air compressor being used. When spray painting large jobs like a fence or car, a Belt Drive Air compressor is recommended. Always refer to the duty cycle of your air compressor before spray painting.