

AIR NIBBLER

INSTRUCTION MANUAL



BLACK RIDGE

Air Nibbler

Instruction Manual



12

*Month
Warranty*

*Minimum
120*^{LPM}

Manufactured and packaged for SUPER CHEAP AUTO PTY LTD ABN 64 085 395 124
751 Gympie Road, Lawnton, Queensland 4501, Australia

WARRANTY

This product is guaranteed against defects for a period of 12 months from date of purchase. This warranty is provided by Super Cheap Auto Pty Ltd ACN 085 395 124 (Supercheap Auto) of 751 Gympie Rd Lawnton QLD 4501 Ph (07) 3482 7500. Supercheap Auto will offer a repair, replacement product or store credit if the product is assessed as being defective during the warranty period.

To claim under this warranty, take this product to the Front Service Desk of your nearest Supercheap Auto store. For store locations, visit www.supercheapauto.com.au (AUS) or www.supercheapauto.co.nz (NZ). You will need your receipt or proof of purchase. Additional information may be requested of you to process your claim. Should you not be able to provide proof of purchase with a receipt or a bank statement, identification showing your name, address and signature may be required to process your claim.

This product may need to be sent to the manufacturer to assess the defect before determining any claim. Faults or defects caused by product modification, misuse and abuse, normal wear and tear or failure to follow user instructions are not covered under this warranty.

Our goods come with guarantees that cannot be excluded under the Australian Consumer Law. You are entitled to a replacement or refund for a major failure and for compensation for any other reasonably foreseeable loss or damage. You are also entitled to have the goods repaired or replaced if the goods fail to be of acceptable quality and the failure does not amount to a major failure.

Any expenses incurred relating to the return of this product to store will normally have to be paid by you. For more information contact your nearest Supercheap Auto store.

The benefits to the consumer given by this warranty are in addition to other rights and remedies of the Australian Consumer Law in relation to the goods and services to which this warranty relates.

ILLUSTRATION



TECHNICAL DATA

Model: WFX-1503A

Stroke: 3600 RPM

Recommended Operating Pressure: 90 PSI (6.2 BAR)

Minimum Air Flow Required: 120-170 LPM (4.2-6CFM)

Air Inlet: 1/4"

WARNING

- **WORK AREA CONDITIONS.** Cluttered areas invite injuries. Avoid any ignition sources, such as smoking, open flames and electrical hazards.
- **ADDITIONAL WORK AREA CONDITIONS.** Do not use machines or power tools in damp or wet locations. Do not expose to rain. Keep work area illuminated.
- **KEEP CHILDREN AWAY.** Children should be kept out of the work area. Do not let children handle machines, tools or extension cords.
- **STORE IDLE EQUIPMENT.** When not in use, tools must be stored in a dry location to inhibit rust. Always lock up tools and keep out of reach of children.
- **USE THE RIGHT TOOL FOR THE JOB.** Do not attempt to force a small tool or attachment to do the work of a large industrial tool. There are certain applications for which this tool was designed. It will do the job better and more safely at the rate for which it was intended.

- **DRESS PROPERLY.** Do not wear loose clothing or jewellery as they can be caught in moving parts. Protective, electrically non-conductive clothes and non-skid footwear are recommended when working. Wear restrictive hair covering to contain long hair.
- **USE EYE PROTECTION.** Always wear impact safety glasses underneath a full face shield during use. Also wear heavy duty work gloves.
- **DO NOT OVER-REACH.** Keep proper footing and balance at all times. Do not reach over or across running machines.
- **MAINTAIN TOOLS WITH CARE.** Keep tools sharp and clean for better and safer performance. Follow instructions for lubricating and changing accessories. The handles must be kept clean, dry and free from oil and grease at all times.
- **REMOVE ADJUSTING KEYS AND WRENCHES.** Check that the keys and adjusting wrenches are removed from the tool or machine work surface before starting work.
- **STAY ALERT.** Watch what you are doing, use common sense. Do not operate any tools when you are tired.
- **CHECK FOR DAMAGED PARTS.** Before using any tool, any part that appears damaged should be carefully checked to determine that it will operate properly and perform its intended function. Any part that is damaged should be replaced.
- **REPLACEMENT PARTS AND ACCESSORIES.** When servicing, use only identical replacement parts.
- **DO NOT OPERATE TOOLS IF UNDER THE INFLUENCE OF ALCOHOL OR DRUGS.** Read warning labels on prescriptions to determine if your judgment or reflexes will be impaired while taking drugs. If there is any doubt, do not operate the tool.

OPERATION

Preparation before operating:

- Inspect the tool carefully to make sure no parts are broken or damaged. Never operate the tool until the damaged or missing parts are replaced.
- Disconnect the air hose before changing or adjusting any accessories.
- Ensure the tool is in the “off” position before connecting the tool to the air hose.

IMPORTANT: Before each use, inspect the condition of the cutter. If dull or damaged, the cutter should be replaced. To replace, follow these steps:

1. Unscrew and remove the cutter's sleeve (#1).
2. Unscrew and remove the nut (#2).
3. Unscrew and remove the screw cap (#3).
4. Pull the cutter out of the pushing rod (#5).
5. Replace the cutter, making sure the tip of the cutting edge fits snugly into the pushing rod.
6. Reverse the steps above to re-assemble the air nibbler.

WARNING: ALWAYS DISCONNECT THE AIR NIBBLER FROM THE AIR SUPPLY WHEN CLEANING, REPLACING OR SERVICING.

Operating:

Recommended air line components (for best results you should incorporate an air regulator with filter).



- Make sure the material to be cut does not exceed the capacity for this air nibbler: maximum of 1.5mm for steel and 1.8mm for aluminium.
- Make sure the tool is connected to the air supply and the air pressure is at 90 PSI (6.2 BAR).
- On the material, make the line or shape to be cut.
- Grip the air nibbler firmly and depress the trigger to begin cutting.
- Apply light pressure to move the air nibbler through the material. If the air nibbler stalls while cutting, release pressure on the trigger to turn off the tool.
- Then back the tool out an inch and restart the cutting process.
- **NOTE:** The air nibbler is designed for cutting straight lines or gradual curves, not 90 degree corners.
- When finished cutting, release pressure on the trigger to turn off the tool, then disconnect the air nibbler from its compressed air supply source.

NOTE:

- Always work at the recommended air pressure. Tool life will be reduced if you always work at pressure exceeding 90 PSI (6.2 BAR).

- If the length of the air hose you are using is within 3m, then it is recommended that a hose with an inner diameter of 8mm is used.
- If the length of the air hose you are using is within 7m but longer than 3m, then it is recommended that a hose with an inner diameter of 10mm or 12mm is used.

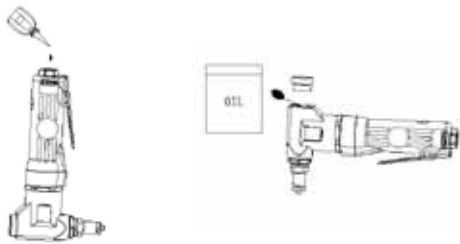
WARNING: Keep the hose away from heat, oil and sharp objects. A damaged air hose should be replaced before use.

MAINTENANCE

NOTE: If necessary, wipe with a damp cloth. You may use a mild detergent or non-flammable solvent.

When operating:

- Before connecting the hose for operation, apply 4 or 5 drops of air tool oil into the air inlet and add a little lubricant on the nibble head. Do not use thick oils such as engine oil as this may lead to reduced performance or malfunction.
- Oiling is necessary every 1-2 hours of continuous operation.
- After connecting the nibbler to the air supply, cover the exhaust hole with a cloth and operate the tool for about 2 minutes in order to release excess oil.

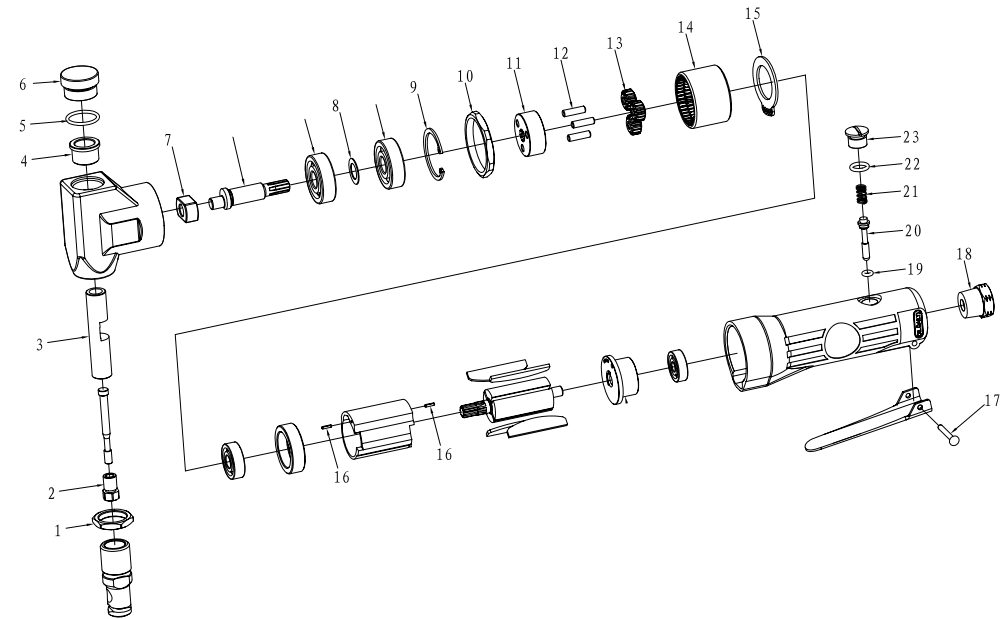


NOTE: DO NOT direct the exhaust hole at yourself or others when operating.

Storage:

- After use, remove the air hose and pour 4 or 5 drops of air tool oil into the air inlet and add a little lubricant at the nibble head, then connect the hose again and run the tool for a few seconds. This will ensure oil is present in the tool whist in storage and prolong the tool life.
- Avoid storing the tool in a location subject to high humidity, which may result in rust deposits inside the tool.

PARTS LIST



No.	Description	Quantity	No.	Description	Quantity
1	Hexagon Nut	1	13	Planet Gear	3
2	Screw	1	14	Gear Ring	1
3	Connecting Rod	1	15	Washer	1
4	Shaft Bushing	1	16	Straight Pin	2
5	O-Ring	1	17	Rivet	1
6	Screw	1	18	Air Inlet Connector	1
7	Swing Block	1	19	O-Ring	1
8	Washer	1	20	Pin	1
9	Snap Ring	1	21	Spring	1
10	Hexagon Nut	1	22	O-Ring	1
11	Idler Wheel Seat	1	23	Nut	1
12	Pin	3			

TROUBLESHOOTING

PROBLEM	CAUSE	SOLUTION
Tool doesn't run at a normal speed or at a variable speed.	Air supply is not sufficient.	Check the air hose to see whether it is blocked or twisted causing a loss of air supply.
	Speed controller breaks down.	Check the air compressor to gain the correct air pressure required.
Tool fails to operate under normal air pressure.	Rotor blades/switch breaks down.	Replace with new rotor blades.
	Dust gets into the motor.	Disassemble the tool and clean the inner structure under proper instructions.
Automatically starts when connected to compressed air.	Throttle lever or starting trigger malfunction.	Check and fix the throttle lever or starting trigger for accurate operation.
Stroke frequency reduces.	Air leakage at the inlet or somewhere else.	Check the air leakage and fix it under proper instruction.
	Bearing damaged.	Replace new bearings.
	Correspondent o-ring is worn or out of position.	Replace damaged o-ring and put it back in its correct position.
Housing becomes excessively hot.	Lack of lubrication.	Oil/lubricate the tool consistently until it gains the right speed.