

# BLACKRIDGE®

# 40

## ***INFLATOR***

*Portable inflator for general light duty tasks around the home*



For service, spare parts or product information,  
please contact Smart Marketing Group Pty. Ltd.

**AUST. 1300 660 457      N.Z. 0800 474 876**

## SUGGESTED APPLICATIONS

You may use most light duty air tools with this inflator. Some examples of light duty tools are:

- Ball Inflator
- Toy Inflator
- Tyre Inflator
- Mini Airbrush
- Stapler
- Combo Nailer

This inflator is NOT recommended for use with a spray gun or medium duty air tools.

## CONTENTS

Section	Page
Contents	2
Suggested Applications	2
Introduction	3
Guarantee	3 – 4
General Safety Instructions	5 – 7
Electrical Information	8
Components and Controls	9
Operating Instructions	10 – 14
Maintenance	14
Trouble Shooting	15
Technical Information	15
Parts Diagram	16
Contact Information	16

## INTRODUCTION

Dear Customer,

Thank you for purchasing this inflator which has passed through our extensive quality assurance processes. Every care has been taken to ensure that it reaches you in perfect condition. However, in the unlikely event that you should experience a problem, or if you require any assistance please do not hesitate to contact us;



**If you have a problem, call customer service do not return this inflator to the place of purchase.**

## CUSTOMER SERVICE

**Australia: 1300 660 457**

**New Zealand: 0800 474 876**

**Operating times: Monday – Friday  
8.30am - 5.30 pm**

Australian Eastern Standard Time (AEST)

## EXPRESS WARRANTY STATEMENT INFLATOR GROUP

You are not required to do anything to register your inflator purchase. Please attach the purchase receipt to this manual and ensure both are kept safe. We hope you enjoy your new inflator, and if you have any problems call customer service on the above phone numbers. Do not return to place of purchase.

Smart Marketing Group Pty Ltd (SMG) warrants that this inflator will be free from manufacturing faults or defects for 12 months from the date of purchase, providing original purchase receipt is kept and shown when needed and is subject to the terms and conditions below.

### What is covered.

- Manufacturing fault or defect.

### How to claim under this warranty.

- Call customer service, phone number at the top.
- Ensure you have the following: Original purchase receipt, Model of inflator, Serial number of inflator.
- Discuss the issue.
- Customer service will advise which authorised service agent to take the inflator to provided the issue is a warranty one.
- Take inflator to authorised service agent for repair.

### What is not covered.

- Commercial use of inflator.
- Use of inflator in a commercial premises.
- Damage or deterioration due to transport.
- Damage caused by negligence, misuse, abuse or accident or incorrect voltage and wattage.
- Any corrosion or rusting.
- Damage caused by incorrect set up and start up.
- Replacement parts due to general wear and tear.
- Inflators with serial number defacement, modification or removal.
- Inflators which have been serviced by other than an authorised SMG service agent.
- Inflators with no original purchase receipt.
- Inflators which have been on sold, not original purchaser.
- Damage due non-servicing of inflator as is required by this manual.
- Blockages / damage caused by dust, dirt, spiders webs or insects.
- Damage caused by the incorrect fitting of accessories.
- Damage caused by overloading, overworking the inflator.
- Damage to attached equipment or third party accessories.
- Damage caused by attached equipment or third party accessories.

## COMPLETE WARRANTY STATEMENT – INFLATOR GROUP

As soon as you have purchased the inflator, we recommend that you check to make sure it is intact and that you read the operating instructions carefully before using it. The purchase receipt for this product is to be retained and must be presented if making a claim under the terms of the Smart Marketing Group (SMG) warranty. Bank account statements are not acceptable for proof of purchase.

This warranty does not cover inflators intended for hire or use in commercial applications or in commercial premises. The warranty will under no circumstances extend to reimbursement or payment of damages, whether direct, indirect or consequential. The warranty is void if there is evidence the inflators has been modified or tampered with in any way or used with unauthorised accessories without our consent.

SMG declines any responsibility or liability whatsoever arising from misuse or abuse, negligent handling of the inflators or if the product has not been installed or failure to comply with the relevant safety, operating, setting and maintenance instructions (see further in this manual).

Any item sent freight collect for repair will be refused. Warranty repairs are free of charge, provided the appliance is delivered to our service department or authorised service agent. The inflator will need to be returned, adequately protected in a box. Transit damage is responsibility of the owner. Assistance under the warranty will only be made available if the request is made to our customer service team on the contact numbers listed below and proof of purchase is provided.

This is a repair only warranty you will need to take the inflator to the authorised service agent after contacting our customer service centre.

Damage caused by third party accessories is not covered under this warranty.

Damage caused to attached equipment or third party accessories will not be covered under this warranty.

Rust and corrosion are not covered under this warranty.

If a warranty fault is found the freight cost will be credited to the owner. Blockages caused by spider webs, insects, dirt, or accumulated dust is not covered by warranty. SMG reserves the right to replace or repair the appliance within the warranty period. Parts found to be defective due to a manufacturing default will be replaced free of charge.

In the event of SMG choosing to replace the appliance, the warranty will expire at the original date of purchase. If no warranty fault is found the owner will be advised and the product will be returned and any costs associated with the service will be charged to the owner.

In Australia, this SMG warranty is in addition to the conditions and guarantees which are mandatory as implied by the Trade Practices Act 1974 and State and Territory legislation.

In New Zealand, this SMG warranty is in addition to the conditions and guarantees which are mandatory as implied by the New Zealand Consumer Guarantee Act 1993.

For service, spare parts or product information please contact customer service:

Australia: 1300 660 457

New Zealand: 0800 474 876

## **LUBRICATION OF INFLATOR**

This inflator is OIL FREE. Therefore there is NO oil used for lubrication.

## **ASSEMBLY**

This inflator MUST be fully assembled by you prior to use. Failure to do so will result in the warranty being VOID. Failure to fully assemble this inflator may also result in personal injury.

## **SAFETY**

Before attempting to operate this inflator the following basic safety precautions should be taken to reduce the risk of fire, electric shock and personal injury. It is important to read the instruction manual and to understand applications, limitations and potential hazards associated with the inflator. This inflator is not intended for use by persons (including children) with reduced physical, sensory or mental capabilities, or lack of experience and knowledge, unless they have been given supervision or instruction concerning the use of the appliance by a person responsible for their safety.

## **BEWARE OF CHILDREN AND PETS**

Children and pets should be kept out of the work area. Children should not be allowed to touch or operate the inflator, tools or extension cords. This inflator is not designed for use by young children or infirm persons without supervision. The inflator and tools should be kept out of reach of children, preferably stored or locked in a secure cabinet or room when not in use.

## **WORK AREA**

Work areas and benches should be kept tidy. Cluttered benches and work areas can cause accidents. Floors should be kept clean and free from rubbish. Special care should be taken when the floor is slippery due to sawdust or wax. Always leave sufficient distance, at least 5 metres between the inflator and the work area, especially when using tools designed for sanding or spraying liquids.

## **WORK ENVIRONMENT**

Do not expose your inflator to rain or use in damp or wet conditions. Keep the work area well lit.

## **GUARD AGAINST ELECTRIC SHOCK**

Avoid body contact with earthed or grounded surfaces (e.g. pipes and refrigerators).

## **DO NOT FORCE INFLATORS**

The inflator will do a better, safer job and give you much better service if it's used at the duty cycle for which it was designed. The duty cycle will only take effect after the initial (1st ) tank fill for the day. This inflators duty cycle is 50%. Duty cycle is the proportion of time during which the inflator is operating compared with not operating. For example a 50% duty cycle could mean after 30 seconds of operation, motor pumping, the inflator must be left for 30 seconds resting, motor not pumping. When the motor is pumping the attached air tool can not be used. Only use the attached air tool while the inflator is not pumping. Stop using the attached tool as soon as the inflator starts pumping.

## **USE THE RIGHT TOOL**

Select the right tool for the job. Do not use a tool for a job for which it was not designed. Do not force a small inflator to do the job of a heavy-duty inflator. Do not use the inflator for purposes not intended.

## **DO NOT ABUSE THE POWER CORD**

Never yank or pull on the power cord to disconnect it from the mains supply socket. Never carry or pull your inflator by its power cord. Keep the power cord away from heat, oil, solvents and sharp edges. Regularly check the plug and cord and if damaged have it replaced by an authorised service facility.

## **EXTENSION CORDS AND REELS**

This inflator **MUST** be plugged directly into a 240V AC wall socket.

This inflator is **NOT** designed to be run off an extension cord/lead. If you need extra distance do **NOT** use an extension cord, **USE A LONGER AIR HOSE**.

The use of extension cords may cause power voltage loss and will result in damage to the motor. This will **NOT** be covered under warranty.

## **SECURE THE WORK PIECE**

Whenever possible secure the work piece using clamps or a vice. It is safer than using your hands or feet and leaves both hands free to control the tool.

## **HOT COMPONENTS**

Beware many of the components will get hot during use. Never touch any of the metal pipes, pump or motor as these may burn.

## **MAINTAIN YOUR INFLATOR WITH CARE**

Follow the instructions for use and changing accessories. Check the inflator power cord periodically and if damaged have it replaced by an authorised service facility. Keep handles clean, dry and free from oil and grease. Ensure that ventilation slots are kept clean and free from dust at all times. Blocked ventilation slots or air filter can cause overheating and damage to the motor and this will not be covered under warranty.

## **DISCONNECT INFLATOR**

Ensure that the inflator is disconnected from the mains supply when not in use, before servicing, making adjustments or when changing any accessories.

## **REMOVE ADJUSTING KEYS AND WRENCHES**

Form the habit of always checking to see that any adjusting keys or wrenches have been removed from the inflator or attached air tools before operating.

## **AVOID UNINTENTIONAL STARTING**

Ensure that the switch is in the 'OFF' position before plugging the inflator into the mains supply.

## **PROTECT FURNISHINGS**

If using the inflator inside your house, protect furnishings and floors with a suitable dust sheet.

## **FIRE PRECAUTIONS**

When using the inflator inside your house or workshop general fire precautions should be observed. As a precaution it is recommended that an expert is consulted on obtaining and using a suitable fire extinguisher.

## **CLEANING YOUR INFLATOR**

Always disconnect your inflator from the mains power supply before you commence cleaning. Always ensure that your inflator has cooled, about one (1) hour, before cleaning and storing. When cleaning your inflator use only a damp soft cloth. **NEVER** use liquid or solvents of any type.

## CHECK DAMAGED PARTS

Before using the inflator it should be carefully checked to determine that it will operate properly and perform its intended function.

Check for the correct alignment of moving parts ensuring that they do not bind. Check for broken or missing parts and have them replaced or repaired at an authorised service facility. Check any other condition that may affect the operation of the inflator. A guard or any other part of the inflator that is damaged should be properly repaired or replaced by an authorised service facility unless otherwise indicated in this instruction manual.

Any switch that does not operate correctly must be replaced by an authorised service facility.

DO NOT use the inflator if the 'ON / OFF' button does not turn the inflator 'ON' and 'OFF'.

## PERSONAL SAFETY

### Clothing

Do not wear loose clothing, jewellery or anything that could get caught in moving machinery.

### Hair

Long hair should be tied back or contained in a protective covering.

### Eye Protection

The use of safety goggles is highly recommended (normal glasses are not sufficient for eye protection) when using inflator. Prescription glasses do not have safety lenses.

### Footwear

Where there is the risk of heavy objects or if there is a risk of slipping on wet or slippery floors, suitable non-slip safety footwear should be worn. Protect your feet from dropping accidents.

### Ear Protection

The use of ear protection is highly recommended when using inflators. The continual noise may damage your ears.

### Respiratory Protection

When operating any machinery that creates dust or when spray painting, an approved dust / filter mask must be worn. When machining concrete, man made fibres, especially MDF (Medium Density Fibre board), the resin used in these materials can be hazardous to your health. Use an approved face mask with replaceable filter.

### Do Not Over Reach

Do not over reach. Keep a proper footing and maintain your balance at all times. Avoid using abnormal stances and awkward body positions.

### Stay Alert

Watch what you are doing, use common sense, and never operate a inflator when you are tired, drinking alcohol, taking drugs or if taking medication that causes drowsiness.

## WARNING

Only use inflator when fully assembled.

Do not attempt to modify the inflator in any way; this will VOID your warranty.

The use of any attachment or accessory other than those recommended in this instruction manual could result in damage to the inflator and could cause injuries to the operator.

This electric inflator complies with Australian / New Zealand and International standards and safety requirements. Repairs should only be carried out by qualified persons using original spare parts. Failure to do so may result in considerable danger to the operator.

## IMPORTANT



### ELECTRICAL DATA

This inflator is fitted with a sealed electrical connection plug that is compatible with the mains power supply for Australia / New Zealand and meets the requirements of Australian Standards. This inflator must be connected to a supply voltage that is equal to that stated on the rating label. If the mains power connection plug or power cord becomes damaged it must be replaced with a complete assembly that is identical to the original, and this must be replaced by an authorised service centre. Always follow the Australian / New Zealand requirements for connection to the mains supply. If in doubt always consult a qualified electrician.

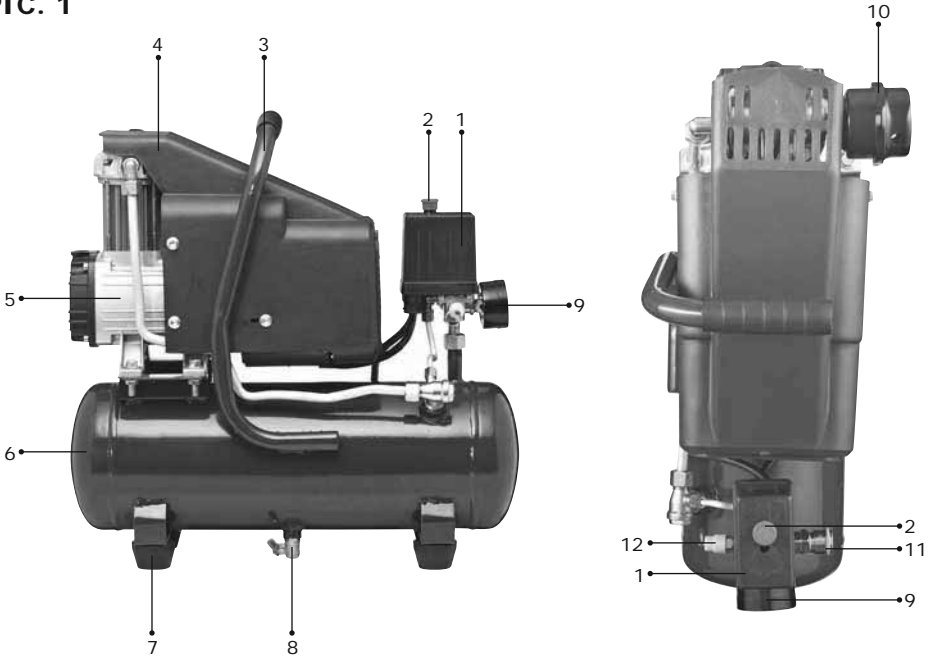
## SPECIFIC SAFETY INSTRUCTIONS

**Warning!** Do not use the inflator in areas where there is a risk of explosion or fire from combustible materials. The sparks generated from certain tools attached to inflator can ignite combustible materials as well as flammable liquids, paint, varnish, petrol, flammable gases and dust of an explosive nature. As a precaution it is recommended that you consult an expert on a suitable fire extinguisher and its use.

- **Do not attempt to modify the inflator, guards or the supplied accessories in any way.**
- **Domestic inflators are designed for intermittent operation. Ideally a 50% duty cycle. (Meaning. 30 seconds ON motor pumping and 30 seconds OFF, motor not pumping). When the motor is pumping the attached air tool can not be used. Only use the attached air tool while the inflator is not pumping.**
- **Stop using the attached tool as soon as the inflator starts pumping.**
- **Fully assemble inflator before use.**
- **Always ensure your inflator is level and stable.**
- **Never use an extension cord with this inflator always use a longer air hose.**
- **Never connect to a generator which does not produce sufficient power, at least 1500W and has pure sine wave power output.**
- Domestic inflators are not designed for industrial / commercial applications.
- Domestic inflators are not designed for continuous running.
- Avoid touching the pump area as it can become very hot and may burn.
- Ensure that the inflator is disconnected from the mains supply when not in use, before servicing, making changes and when changing attachments such as air hoses / tools.
- Always use the correct type of tool for the operation to be carried out.
- Never use the inflator if any part of the unit is damaged. Always have the inflator serviced by an authorised service agent.
- Always wear safety eye, ear and respiratory protection when operating the inflator.
- Allow the tank to completely fill before using the inflator.
- If the inflator makes an unfamiliar sound or vibrates excessively, switch the inflator 'OFF' immediately and disconnect from the mains power supply. Investigate the possible cause or consult your authorised service facility.
- Always move the inflator using the handle and wheels.
- Always use the inflator on stable ground.
- This inflator is designed to compress normal air. Never use to compress any other type (s) of gases.
- Never direct the jet of air or other liquids / gases towards your body, other persons or animals.
- Never direct the jet of air or other liquids / gases towards this inflator.
- This inflator is not suitable for pharmaceutical, food or sanitary purposes.
- This inflator is not to be used to for filling scuba or oxygen air bottles or tanks.
- Always follow the instructions relating to the tools attached to this inflator.



**PIC. 1**



## COMPONENTS AND CONTROLS

**Pic. 1**

1. Pressure switch
2. On / Off button - red colour
3. Handle
4. Motor cover
5. Pump
6. Tank
7. Rubber feet
8. Tank drain tap
9. Tank pressure gauge
10. Air filter - metal
11. 'Nitto style' outlet socket fitting
12. Safety valve

# OPERATING INSTRUCTIONS

## Unpacking

Carefully unpack your inflator. Dispose of all packing material in an environmentally responsible manner.

## Assembly

Your inflator requires minor assembly before initial operation. Check that you have all required components required for assembly and initial use.

## Rubber Stopper

To attach the rubber stoppers to the bracket located on the bottom of the tank;

1. Undo the nut and remove the washer.
2. Push through the bracket and replace the washer.
3. Tighten the nut, Pic. 2

## Air Filter

The supplied air filter must be used.

Failure to do so may result in irreparable damage and will void the warranty, Pic. 3

To install;

1. Carefully screw supplied air filter into the threaded hole on the top of the pump head. This only needs to be done up by hand. Do not use tools to tighten air filter.

NOTE: Do not OVER TIGHTEN as this may damage the air filter or cylinder head which will NOT be covered under warranty.

**PIC. 2**



**PIC. 3**



## WARNING

Do not attempt to operate this inflator until it is fully assembled.

Damage caused due to incomplete assembly will not be covered under warranty.

Ensure the inflator is disconnected from the power supply before carrying out any assembly, maintenance or adjustments on the machine.

## STARTING AND STOPPING YOUR INFLATOR

### Pic. 4

NOTE: Always ensure that you plug your inflator into a standard 240V AC power point. Never use an extension cord as this can lead to a voltage drop which may cause power loss and over heating. Use a longer air hose if you need to get closer to your work area.

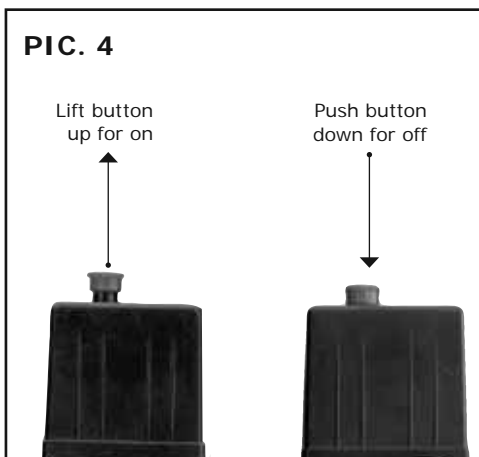
Always start and stop the inflator using the ON/OFF button on the Pressure Switch (Pic. 1 Item 1 and 2 as well as Pic. 4). Damage caused by not using this button will not be covered by warranty.

#### To turn your inflator ON;

Lift up the red ON / OFF button on top of the pressure switch

#### To turn your inflator OFF;

Push down the red ON / OFF button on top of the pressure switch



## RUNNING IN YOUR NEW INFLATOR

Your inflator does not require running in. Before use ensure you have read and understood these instructions.

Before use ensure this inflator is fully assembled as per page 10.

## USING THE INFLATOR

### Before starting run through this simple list;

1. Fully assembled.
2. Drain tap – open and drain tank
3. Drain tap – close fully
4. Check power lead for any damage. If damaged have replaced by an authorised service centre.
5. Plug inflator into a standard 240V 10Amp AC power point and turn ON.
6. Lift the red button to turn ON, see page 11, Pic.4.
7. Allow the inflator to fill the air tank.
8. Turn the inflator OFF.
9. Turn the power point OFF and disconnect the power lead from the power point.
10. Connect your air hose and air tools.
11. Reconnect to the power lead to the power point and turn ON.
12. Turn your inflator ON.
13. Once turned on and you begin using the connected air tools the inflator will start and stop without warning. This is controlled by the pressure switch. These pressure settings are factory set and should not be changed.

Pumping starts at (minimum) 85PSI and stops at (maximum) 115PSI. Once the initial pump up stage has finished you can use the inflator. Remember air pressure is not regulated. If low pressure is required buy a regulator.

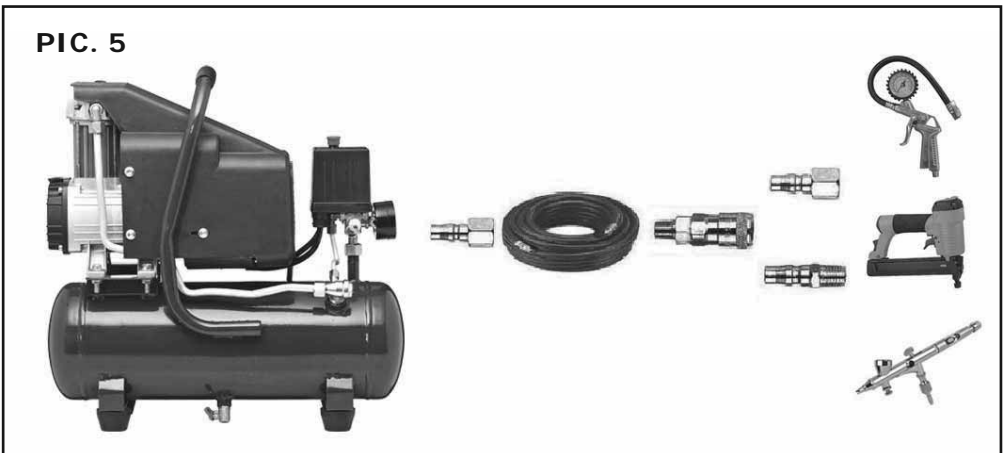
## TOOL CONFIGURATION

The configuration of tools and accessories can be varied to suit your particular requirements. A basic recommended set up is shown in Pic. 5 (accessories not included).

### When you have finished using your inflator follow these simple steps:

1. Turn your inflator OFF, using the ON/OFF button.
2. Turn the power point OFF and disconnect the power lead.
3. Disconnect your air tools and air hose.
4. Clean your air hose and air tools.
5. Store your air hose and air tools in a secure well ventilated cabinet.
6. Slowly open the tank drain tap, see page 14. This allows excess air and moisture, water, to vent.
7. Leave the tank drain tap open. This allows any moisture to drain while the inflator is stored.

**PIC. 5**



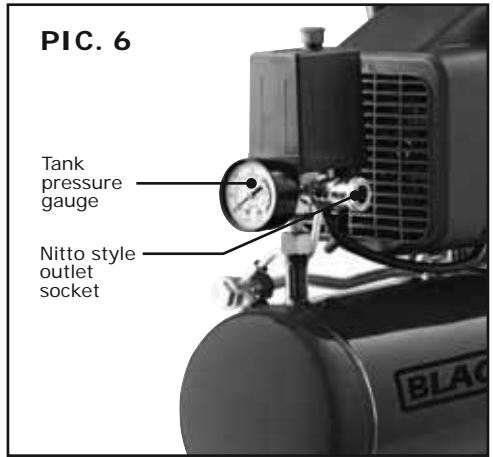
# AIR OUTLET

**Pic. 6**

Note: This inflator has been supplied with no adjustable regulator and gauge.

Different air tools require different operating pressures. Always check with the tool manufacturer if unsure.

This compressor only has 8Bar pressure. If you require adjustable pressure you will need to buy a regulator.



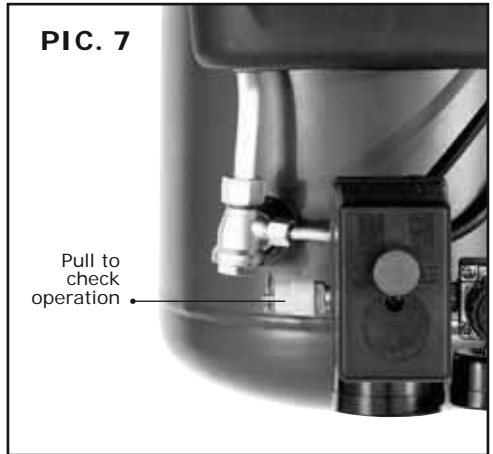
# SAFETY VALVE

**Pic. 7**

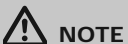
NOTE: When checking the safety valve ALWAYS wear safety glasses.

To check the operation of the safety valve the air tank will need to be full. Gently pull the ring outwards. This should release air under pressure. Release the ring and this should stop the air out flow once the pressure has dropped.

If the safety valve does NOT work in this manner, STOP the inflator immediately and have the inflator checked / serviced by an authorised service centre.



## IMPORTANT



### NOTE

This inflator has been supplied with no adjustable regulator and gauge.

Outlet pressure is 8 Bar (115 PSI).

If you require a lower pressure for your air tool please buy an adjustable regulator and gauge from your stockist.

## AIR OUTLET

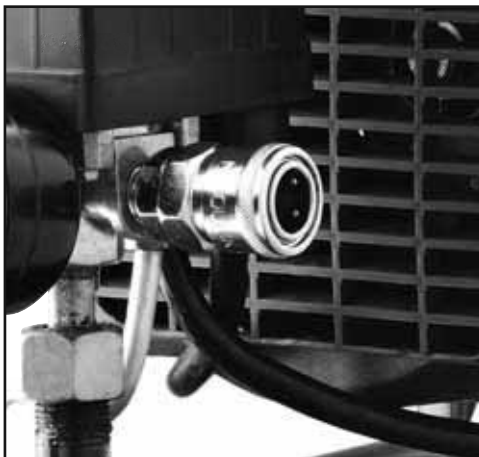
### Pic. 8

This inflator is fitted with a 'Nitto style' air fitting.

To use:

1. Slide the outer collar down.
2. Push in the male fitting (not included).
3. Release the collar.
4. Fully and completely push the male fitting (not included) into the female until it clicks.

Note: This inflator has a maximum pressure of 8 bar. Always regulate the air pressure to match your air tool. Different air tools require different operating pressures. Always check with the tool manufacturer if unsure.



## DRAIN TAP

### Pic. 9

After use open the drain tap to drain excess air and any moisture. The excess air will also help purge the moisture. Leave the drain tap open when inflator is not in use, so any moisture can continue to drain

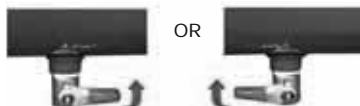
To open the drain tap pull the lever down to vertical.

To seal the drain tap push the lever up to horizontal.

NOTE: Remember to seal the drain tap before starting the compressor.

### PIC. 9

Drain Tap Sealed



To close and seal push lever up Right or left

Drain tap opened unsealed



To open and drain pull lever down

## MAINTENANCE

### Daily: Before Use

1. Seal the tank drain tap, see above, Pic. 9.
2. Check safety valve operation, see page 13, Pic. 7.

### After Use

1. Open the tank drain tap, see above, Pic. 9.
2. Wipe down the inflator.
3. Store safely and securely.

## IMPORTANT



This inflator has a maximum pressure of 8 bar. Always regulate the air pressure to match your air tool. Different air tools require different operating pressures. Always check with the tool manufacturer if unsure.

## CLEANING

ENSURE the inflator is NOT running whilst cleaning. To keep the inflator clean, always wipe down after use. Wear eye protection when cleaning. Only clean the inflator with a damp soft cloth. NEVER use liquid or solvents of any type. Ensure ventilation slots are kept clean and free from dust/dirt build up.

## REPAIRS

Repairs to your inflator should only be carried out by an authorised service agent.

Call BLACKRIDGE for your closest centre, Aust.  
**Aust. 1300 660 457 N.Z. 0800 474 876.**

## ? TROUBLE SHOOTING

### Inflator will not start

Check that you have plugged the power lead into a standard 240V 10Amp power point and turned the switch ON.

Check that you have turned the inflator ON/OFF switch ON.

The air tank may be full. Use your air tool and the inflator should start when the pressure decreases to 85PSI.

### Inflator does not build up pressure

Check that the tank drain tap is sealed

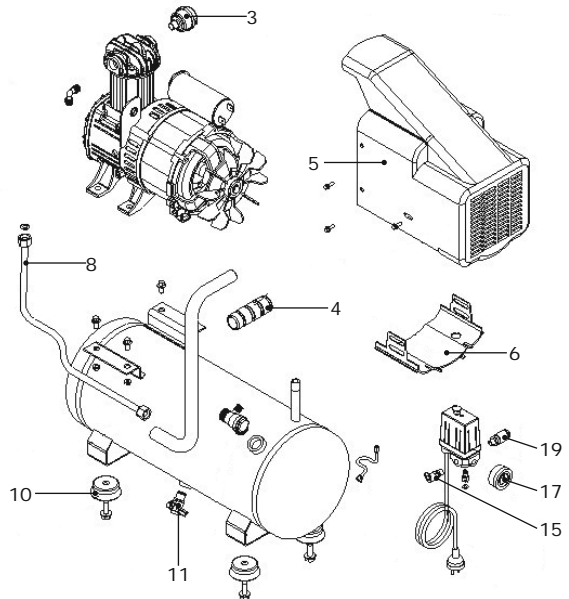
Check that the air fitting is not leaking. If leaking replace.

### Inflator smells like burnt oil

Using beyond the 50% duty cycle, allow to cool for 30 minutes before reusing this inflator.

User replaceable parts listed below. All other parts must be serviced/replaced by an authorised service agent.

Part	Description	SMG Part No.
17	Tank pressure gauge	95 BRC95TPG
10	Rubber stopper with bolt & nut	95 BRI40RS
11	Drain tap	95 BRC95DT
19	Nitto style socket fitting (male)	95 BRI40NSF
5 & 6	Motor cover	95 BRI40MC
15	Safety valve	95 BRC95SPV
4	Handle grip	95 BRI40HG
3	Air filter	95 BRC95AF
8	Exhaust tube	95 BRI40ET



## TECHNICAL INFORMATION

Specifications	
Inflator	BRI40
Voltage	240V AC ~ 50Hz
Motor	1 HP
Wattage	750W
	Oil free
No Load Speed	2800 RPM
Free Air Delivery	40L per minute*
Tank Size	8L



For any queries or assistance call Customer Service

 **AUST. 1300 660 457    NZ 0800 474 876**

Hours of operation: Monday to Friday 8.30am - 5.30pm AEST

**Do not return to place of purchase.**

Keep your purchase receipt, this will be required to make any claims under the 12 month warranty.

**BLACKRIDGE®**