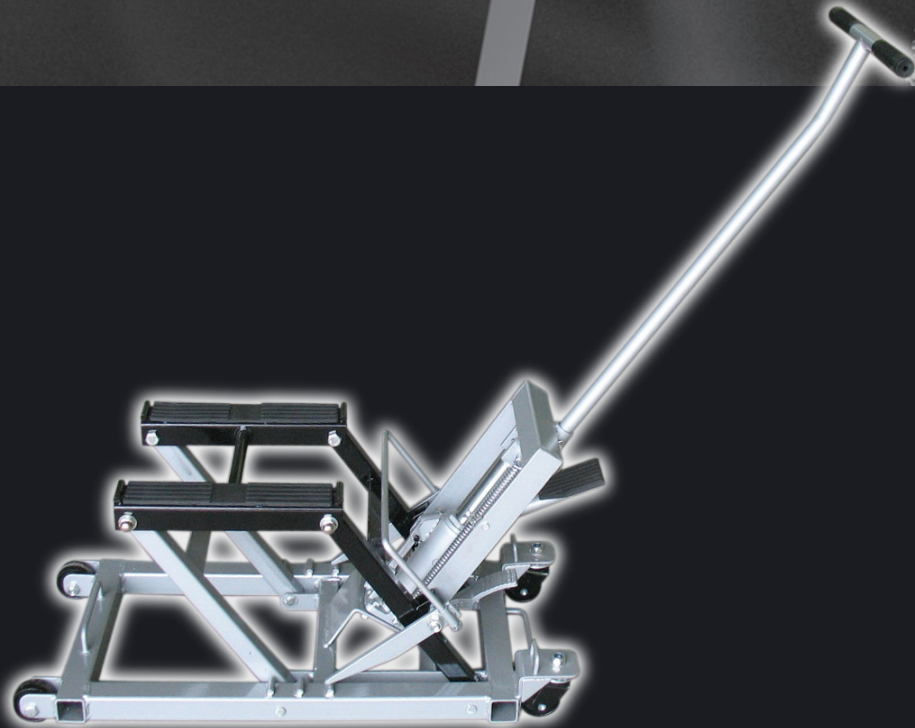


680KG ATV LIFT



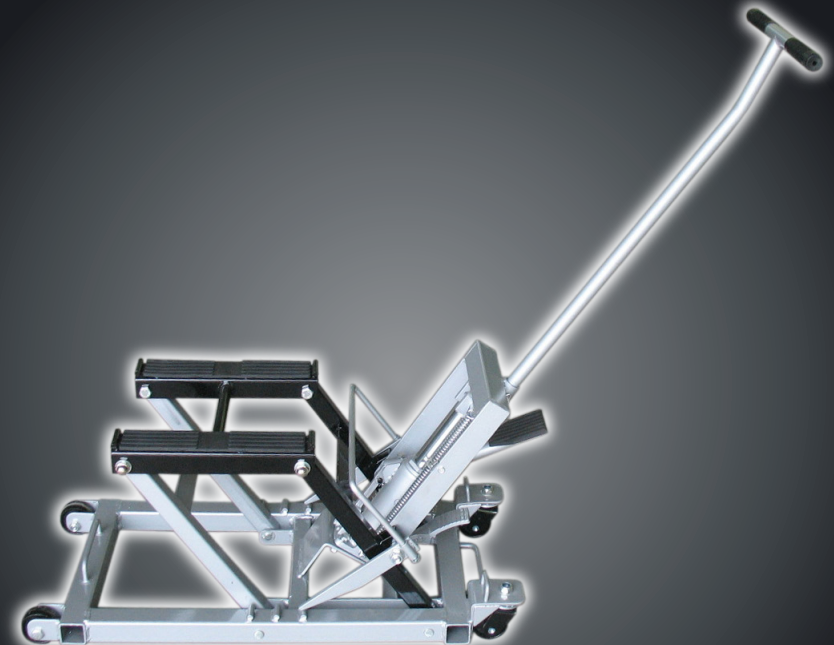
Value you can trust



Manufactured and packaged for SUPER CHEAP AUTO PTY LTD ABN 64 085 395 124
751 Gympie Road, Lawnton, Queensland 4501, Australia

680KG ATV LIFT

Owners/Instruction Manual



PLU 284935

WARRANTY

This product is guaranteed against defects for a period of 12 months from date of purchase. This warranty is provided by Super Cheap Auto Pty Ltd ACN 085 395 124 (Supercheap Auto) of 751 Gympie Rd Lawnton QLD 4501 Ph (07) 3482 7500. Supercheap Auto will offer a repair, replacement product or store credit if the product is assessed as being defective during the warranty period.

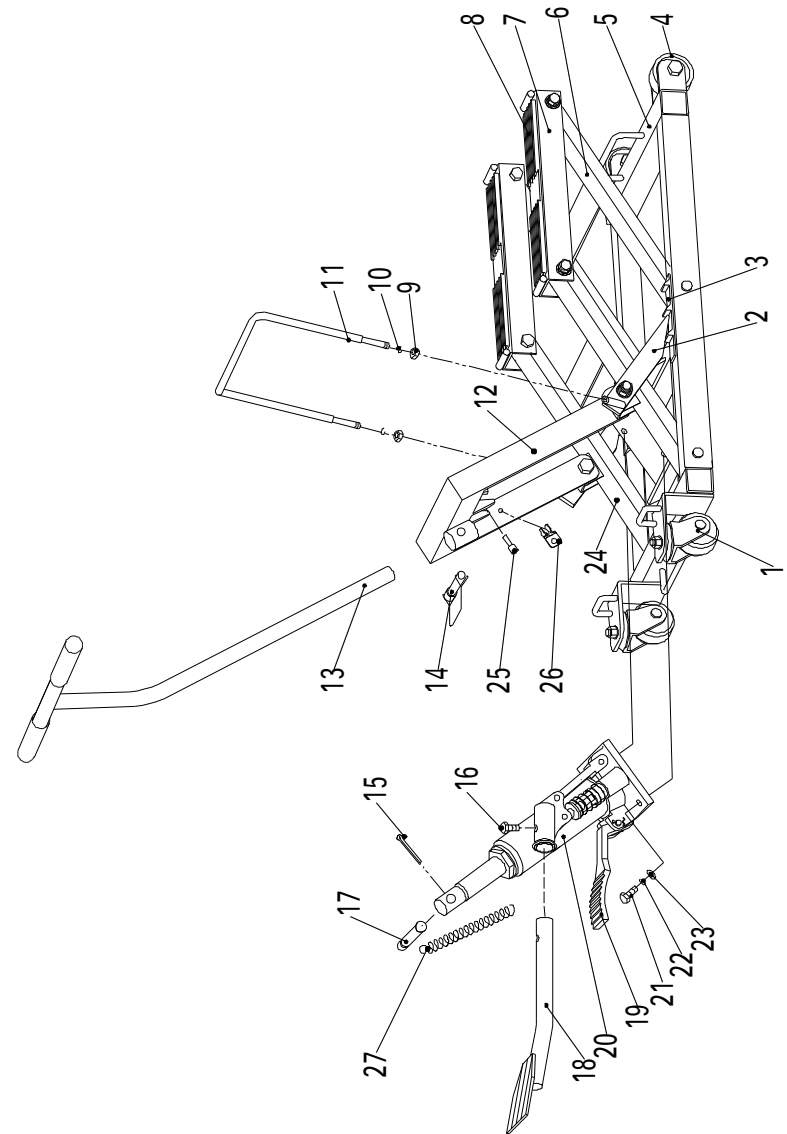
To claim under this warranty, take this product to the Front Service Desk of your nearest Supercheap Auto store. For store locations, visit www.supercheapauto.com.au (AUS) or www.supercheapauto.co.nz (NZ). You will need your receipt or proof of purchase. Additional information may be requested of you to process your claim. Should you not be able to provide proof of purchase with a receipt or a bank statement, identification showing your name, address and signature may be required to process your claim.

This product may need to be sent to the manufacturer to assess the defect before determining any claim. Faults or defects caused by product modification, misuse and abuse, normal wear and tear or failure to follow user instructions are not covered under this warranty.

Our goods come with guarantees that cannot be excluded under the Australian Consumer Law. You are entitled to a replacement or refund for a major failure and for compensation for any other reasonably foreseeable loss or damage. You are also entitled to have the goods repaired or replaced if the goods fail to be of acceptable quality and the failure does not amount to a major failure.

Any expenses incurred relating to the return of this product to store will normally have to be paid by you. For more information contact your nearest Supercheap Auto store.

The benefits to the consumer given by this warranty are in addition to other rights and remedies of the Australian Consumer Law in relation to the goods and services to which this warranty relates.



| SPECIFICATIONS | |
|----------------------|-----------|
| Max Capacity: | 680kg |
| Base Size: | 79 x 37cm |
| Minimum Lift Height: | 11cm |
| Maximum Lift Height: | 35cm |

| PARTS LIST | | |
|------------|------------------|------|
| No. | Description | Qty. |
| 1 | Caster Assembly | 2 |
| 2 | Lock Pawl | 2 |
| 3 | Lock Pawl Stops | 2 |
| 4 | Front Wheels | 2 |
| 5 | Frame | 1 |
| 6 | Front Load Frame | 1 |
| 7 | Saddle Platform | 2 |
| 8 | Rubber Pads | 2 |
| 9 | M8. Nut | 2 |
| 10 | Φ8 Lock Washer | 2 |
| 11 | Lock Bar | 1 |
| 12 | Connecting Frame | 1 |
| 13 | T-Handle | 1 |
| 14 | Handle Pin | 1 |
| 15 | Split Pin | 1 |
| 16 | Yoke Set Screw | 1 |
| 17 | Lock Pin | 1 |
| 18 | Lift Pedal | 1 |
| 19 | Release Pedal | 1 |
| 20 | Hydraulic Ram | 1 |
| 21 | Bolt (M8 x 25) | 2 |
| 22 | Φ8 Lock Washer | 2 |
| 23 | Φ8 Flat Washer | 1 |
| 24 | Load Frame | 1 |
| 25 | Lock Screw | 1 |
| 26 | Locking Clamp | 1 |
| 27 | Spring | 1 |

IMPORTANT SAFETY INFORMATION
 READ ALL SAFETY WARNINGS BEFORE OPERATION!
 FAILURE TO OBEY THESE WARNINGS MAY RESULT IN LOSS OF LOAD, DAMAGE
 TO JACK AND OR JACK FAILURE RESULTING IN PERSONAL INJURY OR
 PROPERTY DAMAGE.



WARNING

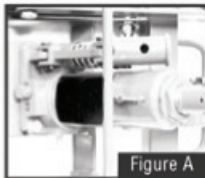
- Study, understand, and follow all instructions before operating this device.
- Failure to heed these instructions may result in personal injury and/or property damage.
- Use straps with 150% rated capacity of weight of load, straps not include.
- Do not exceed rated capacity.
- Use only on hard level surface.
- Before moving, lower the load to the lowest possible point.
- Use the safety arms when load is raised to prevent accidental lowering.
- No alterations shall be made to this product.
- Load saddle platform equally.
- Only attachments and or adaptors supplied by manufacturer shall be used.
- Lift only on areas of the vehicle as specified by vehicle manufacturer.
- This jack is not suitable for lifting, leveling, and/or positioning cars, trucks, SUVs or vehicles other than those specified by the jack's manufacturer.
- Keep children and bystanders clear of the lift area.

ASSEMBLY INSTRUCTIONS

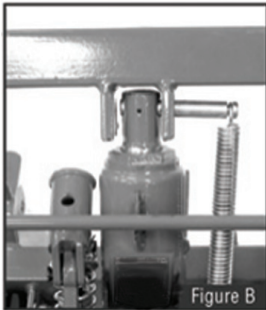
The SCA ATV LIFT requires some assembly. The below steps are to be followed to ensure that this assembly has been carried out correctly.

1. Hydraulic Ram Installation

A. Attach the base of the hydraulic ram (20) to the ram mounting plate on the ATV lift using the bolts (21), lock washers (22) and flat washers (23). (See figure A).



B. Remove the split pin(15) and locking pin (17) from the ram. Raise the load frame (24) by hand and align the head of the hydraulic ram (20) with the slots on the mounting bracket of the frame. Insert the lock pin (17) and secure it with the split pin (15).



2. Installing Locking Bar

Align the lock bar (11) into the lock pawls (2) on both sides and secure using the lock washers (10) and nuts (9).

OPERATING INSTRUCTIONS

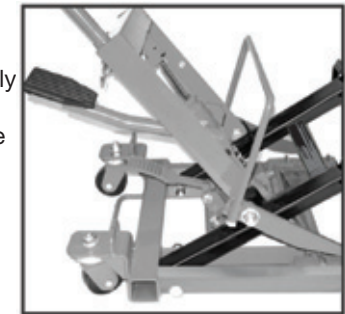
Mounting Vehicle On Lift

1. Lower the Jack completely. This should allow you to easily roll it under the vehicle. Note: Read your vehicle Owner's Manual to determine the recommended lift point of your specific vehicle.
2. Ensure that the weight of the vehicle is distributed on the lift evenly.



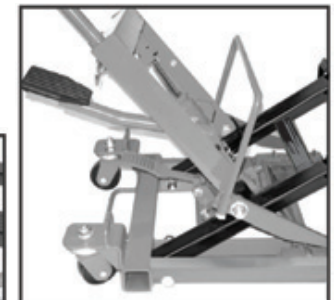
Operating Lift

1. Ensure that the vehicle is properly balanced on the lift saddle platform (7).
2. When it is safe to do so, push the lift pedal(18) repeatedly in a downward motion to lift the vehicle to the desired height. Make sure the vehicle is lifted enough to engage the Lock Pawl (2) into the Lock Pawl stops (3).
3. Immediately after lifting vehicle, support the vehicle with tie down straps. Attach your vehicle securely to the lift, using appropriate straps (straps with 150% rated capacity of weight of load recommended, straps not included).



Lowering Vehicle

1. Be sure it is safe to lower your vehicle by clearing area of tools and equipment, make sure everyone is clear of the lift.
2. Raise the lift high enough to disengage the Lock Pawl from the stops and secure at the locking clamp.
3. With your foot, apply a small amount of pressure to the release pedal (19) to allow the vehicle to be lowered in a safe and controlled fashion.



Never work on the vehicle, or leave unattended if the lock pawl is not in place, and if sufficient tie down straps are not holding the vehicle firmly in place.

1. Visual inspections should be made before each use of the jack by checking for abnormal conditions such as cracked wheels, leaks and damaged, loose or missing parts.
2. This fit must be inspected immediately if it is believed to have been subjected to an abnormal load or shock.
3. This lift is to be repaired by qualified professionals only.
4. It is recommended that an annual inspection of the jack be made and that any defective parts, decals, or safety labels or signs be replaced with manufacturer's specified parts.
5. Any jack that appears to be damaged in any way, is found to be worn, or operates abnormally shall be removed from service until repaired.
6. Because of the potential hazards associated with this type of equipment, no alterations are to be made to the product.
7. Only use approved hydraulic jack oil when replacing or adding oil. Ensure that no dirt or like substances enter the hydraulic system.

BLEEDING INSTRUCTION

IMPORTANT! Before first use, check for proper hydraulic oil level in the Ram.

Then thoroughly test the Lift for proper operation prior to its actual use.

If the Lift appears not to be working properly, it may be necessary to bleed its hydraulic system of excess air.

1. Remove the Oil Fill Plug from the side of the Ram.
2. Have an assistant hold the Release Pedal down.
3. Use stable weights, such as sand bags (not included) to weigh down the Saddle Platform evenly.
4. Pump the Lift Pedal quickly several times.
5. Check the Oil Fill Hole (where the Oil Fill Plug was removed from) and, if necessary, top off the Oil Fill Hole with hydraulic oil.
6. Replace the Oil Fill Plug.
7. Test the Lift several times for proper operation before attempting to lift a load. If the Lift still does not appear to be working properly after bleeding, do not use the Lift until it has been repaired by a qualified service technician.

TROUBLESHOOTING

| POSSIBLE SYMPTOMS | | | | | PROBABLE SOLUTION (Make certain that the Lift is not supporting a load while attempting a solution.) |
|--------------------------------------|------------------|--------------------------|---------------------------|------------------------------|---|
| Will not lift at its weight capacity | Lower under load | Pump stroke feels spongy | Will not lift all the way | Oil leaking from filler plug | |
| X | X | | | | Check that Release Pedal is not stuck and raises completely. |
| X | X | | | | Valves may be blocked and may not close fully. To flush the valves, with assistance: 1. Lower the Saddle Platform and release the Release Pedal. 2. Manually lift the Saddle Platform several inches. 3. Press the Release Pedal and force the Saddle Platform down quickly. |
| X | | X | X | | Ram may be low on oil. Check the oil level and refill if needed. |
| | | | | X | Ram may require bleeding. |
| | | | | | Unit may have too much hydraulic oil inside. Check fluid level and adjust if needed. |



WARNING

1. Before using the ATV lift, read and understand all warnings, assembly and operational instructions.
2. Do not overload the lift beyond the rated capacity.
3. Inspect the lift before every use.
4. Use only on hard, flat surfaces.
5. After the vehicle has been lifted to the desired height, ensure that the locking arm mechanism is engaged.
6. Secure the elevated load to the jack using appropriate tie-down straps(not include).
7. The lift is not be moved while under load.
8. Never get under the vehicle when it on the lift.
9. Refer to the vehicles user manual for recommended lift positions.
10. Centre load on the saddles prior to lifting. Load the weight of the vehicle evenly.
11. Only use attachments and/or adaptors supplied by the manufacturer.
12. This lift is NOT suitable for lifting and/or positioning cars, trucks, SUV's or other vehicles other than those specified by the lift's manufacturer.
13. Keep head, hands and feet away from the lift arms when using the lift.
14. Keep children and bystanders clear of the lift area.
15. Do not make alterations or modify the lift.
16. Failure to heed these warnings may result in personal injury or property damage, loss of load and/ or damage to the lift.