

5 PCE AIR TOOL KIT  
INSTRUCTION MANUAL



Manufactured and packaged for SUPER CHEAP AUTO PTY LTD ABN 64 085 395 124  
751 Gympie Road, Lawnton, Queensland 4501, Australia

BLACK RIDGE

5 PCE Air Tool Kit  
Instruction Manual



12  
Month  
Warranty

PLU 156499

WARRANTY

This product is guaranteed against defects for a period of 12 months from date of purchase. This warranty is provided by Super Cheap Auto Pty Ltd ACN 085 395 124 (Supercheap Auto) of 751 Gympie Rd Lawnton QLD 4501 Ph (07) 3482 7500. Supercheap Auto will offer a repair, replacement product or store credit if the product is assessed as being defective during the warranty period.

To claim under this warranty, take this product to the Front Service Desk of your nearest Supercheap Auto store. For store locations, visit [www.supercheapauto.com.au](http://www.supercheapauto.com.au) (AUS) or [www.supercheapauto.co.nz](http://www.supercheapauto.co.nz) (NZ). You will need your receipt or proof of purchase. Additional information may be requested of you to process your claim. Should you not be able to provide proof of purchase with a receipt or a bank statement, identification showing your name, address and signature may be required to process your claim.

This product may need to be sent to the manufacturer to assess the defect before determining any claim. Faults or defects caused by product modification, misuse and abuse, normal wear and tear or failure to follow user instructions are not covered under this warranty.

Our goods come with guarantees that cannot be excluded under the Australian Consumer Law. You are entitled to a replacement or refund for a major failure and for compensation for any other reasonably foreseeable loss or damage. You are also entitled to have the goods repaired or replaced if the goods fail to be of acceptable quality and the failure does not amount to a major failure.

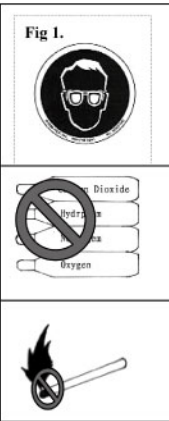
Any expenses incurred relating to the return of this product to store will normally have to be paid by you. For more information contact your nearest Supercheap Auto store.

The benefits to the consumer given by this warranty are in addition to other rights and remedies of the Australian Consumer Law in relation to the goods and services to which this warranty relates.

2

✧ Important Safety Instructions

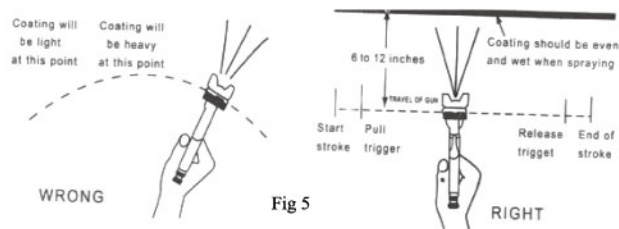
1. Toxic vapors produced by spraying certain materials can create intoxication and serious damage to health. Always wear protective eyewear, gloves and respirator to prevent a toxic vapor hazard. Avoid solvent and paint coming into contact with your eyes or skin. (see fig 1)
2. Never use oxygen, or any other combustible gas as a power source as it may cause an explosion and inflict serious personal injury. (see fig 2)
3. Fluid and solvent can be highly flammable or combustible. Always use in well-ventilated areas and avoid any ignition sources, such as smoking, open flames and decrial hazard. (see fig 3)
4. Disconnect tool from air supply before conducting maintenance.
5. Never use homogenate hydrocarbon solvent as this can chemically react with the aluminum and zinc components.
6. Never point the spray gun in the direction of other bodies.
7. Before operating the tool, make sure all the screws & caps are securely tightened to avoid looking.
8. Before painting, inspect for free movement of trigger and nozzle to insure the tool can operate as specified.
9. Never modify this tool for any other applications. Only use parts, nozzles and accessories by manufacture.



✧ USING THE TOOL KITS

□ Using the Spray Gun

- This tool operates on clean, dry, compressed air at a regulated pressure of 3-5bar. Please ensure you do not exceed this pressure as injury may occur. If the pressure is too low the gun will not function correctly.
- Check and replace any damaged or worn parts on the tool, make sure the trigger and nozzle operate well.
- Connect the gun to air supply. Ensure the Paint pot and all other parts are secured correctly.
- When painting, hold the gun upright to spraying area then move it parallel for several times. Keep the appropriate distance of 6-8 inches between gun and spraying surface according to the atomization pressure and work demand. Please refer to fig5 shown.



3

✧ Adjusting of spray gun

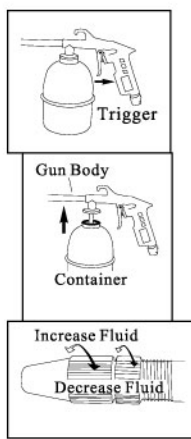
The desired pattern, volume of fluid output and fine atomization can easily be obtained by regulating the Pattern Adjusting Knob and Fluid Adjusting Knob.

**Adjusting pattern:** Turning Pattern Adjusting Knob to the right until tight will make spray pattern round, or turning it left, will make spray pattern ellipse.

**Adjusting volume of fluid output:** Turn the Fluid Adjusting Knob, clockwise will reduce the volume of fluid output and counter-clockwise will increase fluid output.

□ Using the Washing Gun

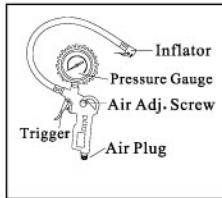
1. Connect the washing gun to air compressor.
  2. Fill with the appropriate amount of neutral detergent or hydrolytic thinner.
  3. Connect gun body (with container tightly secured) and aim the nozzle in the direction of the parts requiring cleaning.
  4. Adjustment of fluid is obtained by rotating the nozzle.
  5. Ensure you clean and dry the solvent chamber after use and before storage.
- Warning:** Avoid the use of highly inflammable solvents. Do not use to spray petrol. Non flammable commercial degreasers and detergents should be used. Never use corrosive detergent.



□ Using the Inflating Gun

1. Connect inflator to air compressor, start compressor and open compressor tap.
2. Set compressor air flow regulator to pressure greater than that of tyre to be inflated.
3. Make sure pressure gauge, inflator and gun body have been connecting tightly.
4. Connect the inflator to the tyre valve.
5. Operate the trigger.
6. If you over-inflate, release some pressure by pressing the bleed valve at the top of the handle.

**Note:** When a tyre is totally deflated it can separate from the wheel rim, allowing air to leak. If this occurs, it will be necessary to jack up the vehicle to raise the tire off the ground before attempting to inflate. The tyre may however still leak slowly, and should be checked by a mechanic or tire specialist.



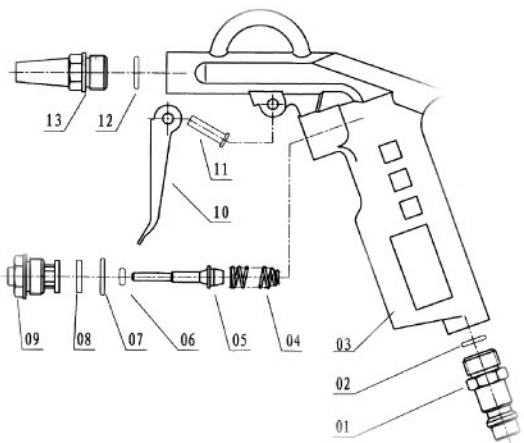
□ Using the Blow Gun

1. Connect blow gun to air compressor.
  2. Make sure the nozzle is correctly tightened.
  3. Aim the nozzle at the parts you want to blow and depress the trigger.
- Caution:** Take care with compressed air. Don't direct air toward people or animals.
- Note:** Wear eye protection - air blast can cause debris and dust to be blown back towards you.



4

✧ Blow Gun Parts List



No	Description	No	Description
1	Air Inlet Plug	8	Rectangle Washer
2	O-ring	9	Switch Seat
3	Gun Body	10	Trigger
4	Switch Spring	11	Trigger Pin
5	Switch Pipe	12	O-ring
6	O-ring	13	Fluid Nozzle
7	O-ring		

Note: Please contact your nearest Supercheap Auto store to order spare parts

8

✧ Maintenance

□ Maintenance of Spray Gun

1. Pour remaining paint into separate container and then clean paint passage and air cap. Spray a small amount of thinner to clean passage. Incomplete cleaning will cause adverse pattern sharp and particles. Clean two-component paint fully and promptly from components after use.
2. Clean other sections with a brush soaked with thinner and soft clothes.
3. Clean paint passages fully before disassembly.
4. Remove fluid nozzle after removing fluid needle set or while keeping fluid needle pulled, in order to protect seat section.

**CAUTION:**

Never use wire or other hard objects to dig nozzle or fluid needle. This will cause the damage. Never immerse spray gun completely in thinner or solvent. When reassembly, always clean parts to prevent the sticking of dust.

□ Maintenance of Washing Gun

1. Pour remaining detergent into another container and clean detergent passage and fluid nozzle with thinner.
2. Using the soft clothes with some thinner clean the washing gun body and the surface of container.

**CAUTION:**

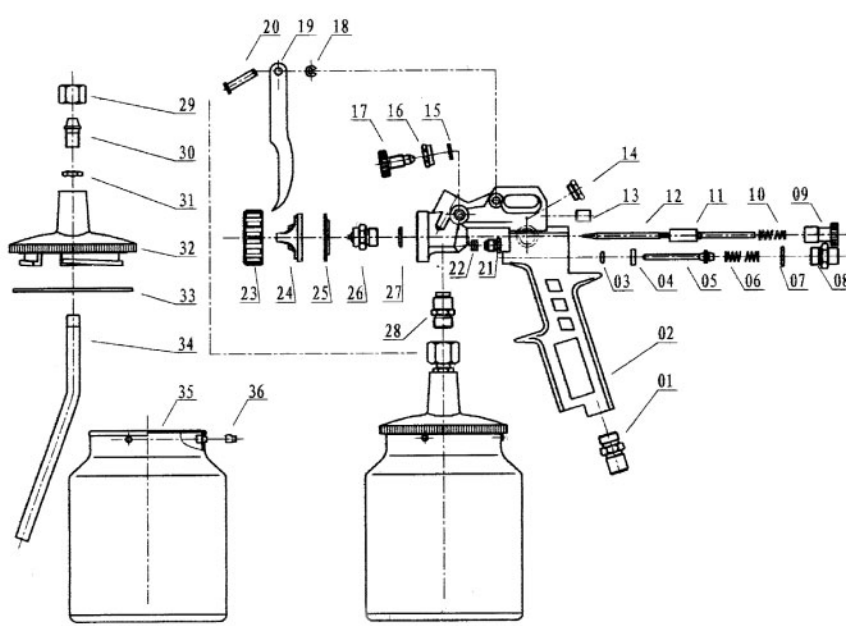
Never use corrosive detergent or homogenate hydrocarbon solvent for washing machinery parts or cleaning the gun. This can chemically react with aluminum and iron parts of the product.

✧ Troubleshooting of spray gun

Symptom	Problems	Solution
Fluttering or spitting	1. Material in container contaminated or low. 2. Dry or worn Needle packing set.	1. Add material into container or change material. 2. Lubricate or replace Needle packing set.
Pattern is arc.	3. Fluid nozzle loose or worn 1. Worn or loose Fluid nozzle. 2. Materials build up on Air cap.	3. Tighten or replace Fluid nozzle. 1. Tighten or replace Fluid nozzle. 2. Remove obstructions from holes, but don't use metal objects to clean it.
Pattern is not Evenly spread.	1. Materials build up on Air cap. 2. Fluid nozzle dirty or worn.	1. Clean or replace Air cap. 2. Clean or replace Fluid nozzle.
The center of Pattern too narrow.	1. Material too thin or not enough. 2. Atomization air pressure too high.	1. Regulate material viscosity. 2. Reduce air pressure.
Pattern width of fan-sharp is not enough.	1. Material too thick. 2. Atomization air pressure too low.	1. Regulate material viscosity. 2. Increase air pressure.

5

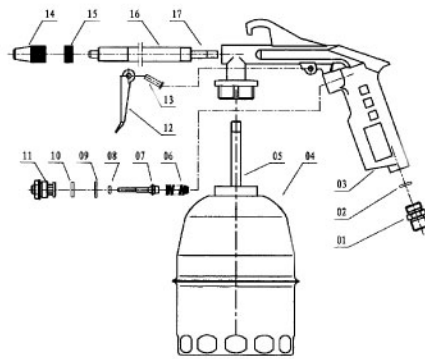
✧ Spray Gun Parts List



No	Description	No	Description	No	Description
1	Air Inlet Plug	13	Sealing Knob	25	Washer
2	Gun Body	14	Snap Retainer	26	Air Cap Set
3	O-ring	15	Pattern Adj. Knob	27	Nut
4	Rectangle Washer	16	O-ring	28	Fluid Joint
5	Switch Valve	17	Pattern Adj. Joint	29	Joint Nut
6	Switch Spring	18	Snap Retainer	30	Fluid Inlet Joint
7	O-ring	19	Trigger	31	Nut
8	Switch Screw	20	Trigger Pin	32	Container Cap
9	Fluid Adj. Knob	21	Director Screw	33	Washer
10	Needle Spring	22	Washer	34	Straw
11	Fluid Needle Set	23	O-ring	35	Container
12	Sealing Screw	24	Fluid Nozzle	36	Pin

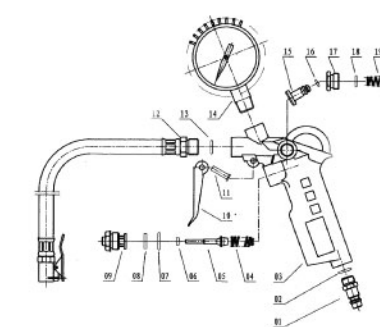
6

✧ Washing Gun Parts List



No	Description	No	Description
1	Air Inlet Plug	10	Rectangle Washer
2	O-ring	11	Switch Seat
3	Gun Body	12	Trigger
4	Container	13	Trigger Pin
5	Straw	14	Air Inlet Cap
6	Switch Valve	15	Air Inlet Cap
7	Switch Pipe	16	Screw
8	O-ring	17	Water Inlet Pipe
9	O-ring	18	Blow Pipe
		19	

✧ Inflating Gun Parts List



No	Description	No	Description
1	Air Inlet Plug	10	Trigger Pin
2	O-ring	11	Washer
3	Gun Body	12	O-ring
4	Switch Spring	13	Trigger Pin
5	Switch Pipe	14	Air Inlet Cap
6	O-ring	15	Screw
7	O-ring	16	Water Inlet Pipe
8	Rectangle Washer	17	Blow Pipe
9	Switch Seat	18	
10	Trigger	19	

7