

POLY TRAY WHEELBARROW



Value you can trust



Manufactured and packaged for SRGS PTY LTD ABN 23 113 230 050
751 Gympie Road, Lawnton, Queensland 4501, Australia

POLY TRAY WHEELBARROW

Instruction Manual



PLU 131353

WARRANTY

This product is guaranteed against defects for a period of 12 months from date of purchase. This warranty is provided by Super Cheap Auto Pty Ltd ACN 085 395 124 (Supercheap Auto) of 751 Gympie Rd Lawnton QLD 4501 Ph (07) 3482 7500. Supercheap Auto will offer a repair, replacement product or store credit if the product is assessed as being defective during the warranty period.

To claim under this warranty, take this product to the Front Service Desk of your nearest Supercheap Auto store. For store locations, visit www.supercheapauto.com.au (AUS) or www.supercheapauto.co.nz (NZ). You will need your receipt or proof of purchase. Additional information may be requested of you to process your claim. Should you not be able to provide proof of purchase with a receipt or a bank statement, identification showing your name, address and signature may be required to process your claim.

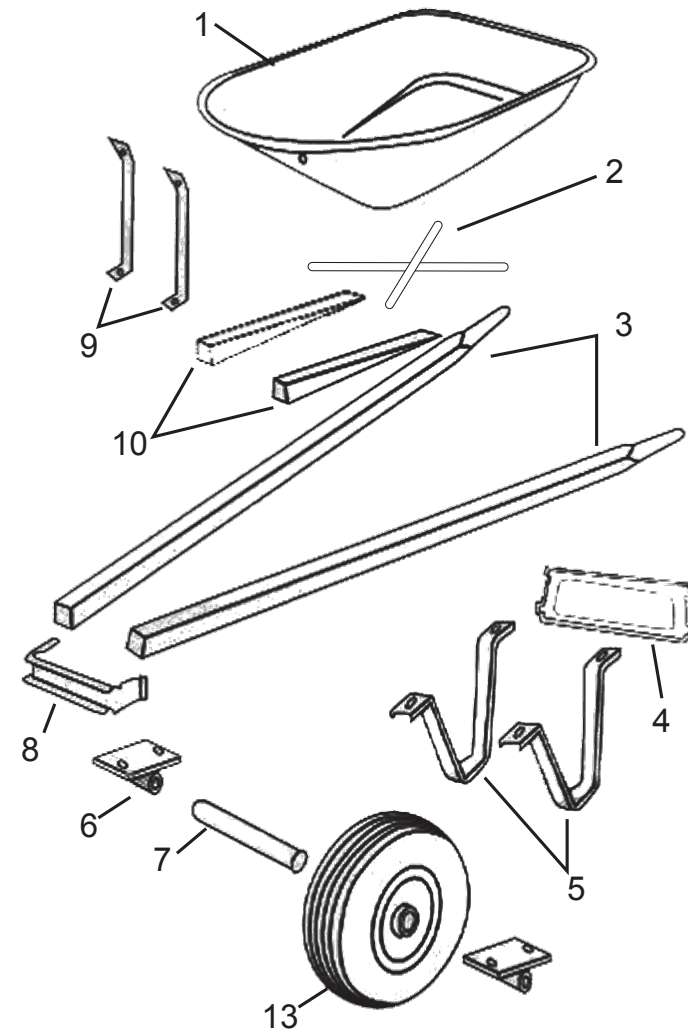
This product may need to be sent to the manufacturer to assess the defect before determining any claim. Faults or defects caused by product modification, misuse and abuse, normal wear and tear or failure to follow user instructions are not covered under this warranty.

Our goods come with guarantees that cannot be excluded under the Australian Consumer Law. You are entitled to a replacement or refund for a major failure and for compensation for any other reasonably foreseeable loss or damage. You are also entitled to have the goods repaired or replaced if the goods fail to be of acceptable quality and the failure does not amount to a major failure.

Any expenses incurred relating to the return of this product to store will normally have to be paid by you. For more information contact your nearest Supercheap Auto store.

The benefits to the consumer given by this warranty are in addition to other rights and remedies of the Australian Consumer Law in relation to the goods and services to which this warranty relates.

PARTS LIST:



PART NO.	DESCRIPTION	QUANTITY
1	Tray	1
2	Tray Bracket	2
3	Handle	2
4	Leg Brace	1
5	Leg	2
6	Axle Bracket	2
7	Axle	1
8	Nose Guard	1
9	Tray Brace	2
10	Plastic Wedges	2
11	Pneumatic Wheel	1
A	Bolt M8 X 135mm	2
B	Bolt M8 X 85mm	2
C	Bolt M8 X 70mm	4
D	Bolt M8 X 40mm	2
E	Bolt M8 X 20mm	2
F	Locking Nut and Washer 8mm	12
G	Washer 16mm	2

NOTE: Do not completely tighten bolts until the assembly is completed. For easier assembly, we recommend two people assemble this product.

ASSEMBLY:

STEP 1:

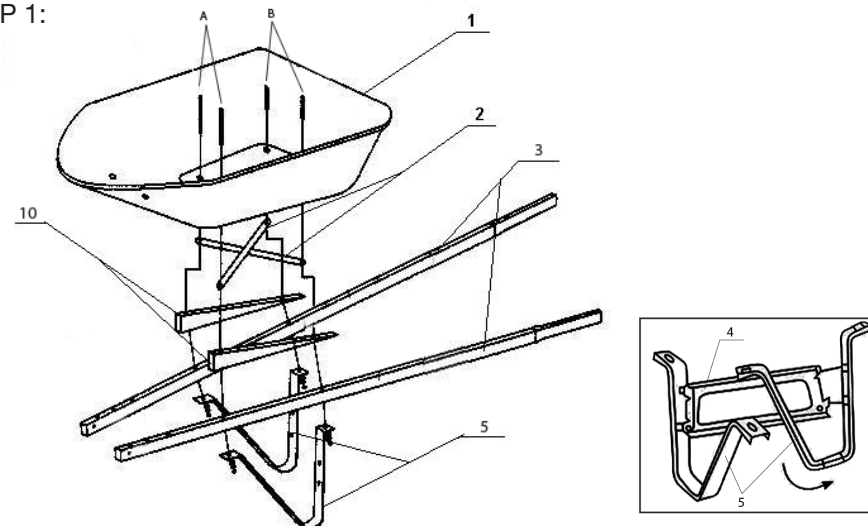
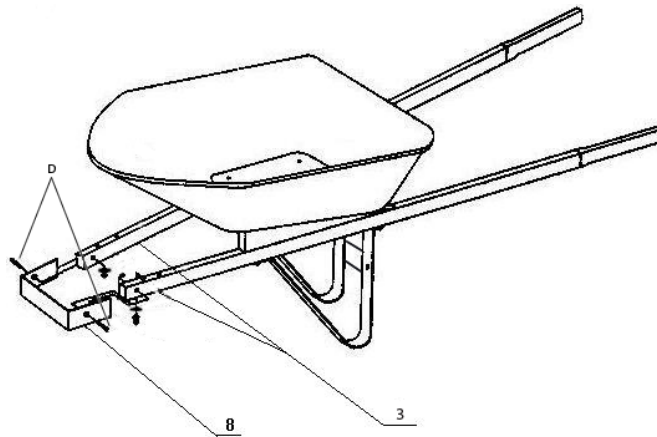


Image A

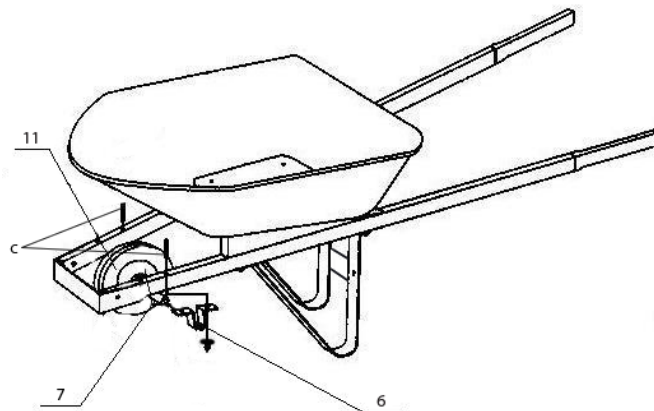
1. Carefully take all parts out of the box and place them on a smooth flat surface.
2. Position the TRAY (Part 1) at an angle so that the underneath is easily accessible and insert bolts (A) and (B) through the tray.
3. Cross the TRAY BRACKETS (Part 2) as shown in the diagram and then slide them over the bolts until they are against the bottom of the TRAY.
4. Slide the PLASTIC WEDGES (Part 10) over the bolts and against the bottom of the TRAY BRACKETS. This PLASTIC WEDGE is a right triangle, make sure the thicker part of the PLASTIC WEDGE is towards the front of the wheelbarrow and the right-angle side is attached to the HANDLE.
5. Engage LEG BRACES (Part 4) into slots on LEGS (Part 5) as shown in image A.
6. Place the HANDLE (PART 3) and LEG over the bolts.
7. Secure the parts with 4 Locking nuts and washers (F) on the 4 bolts.

STEP 2:



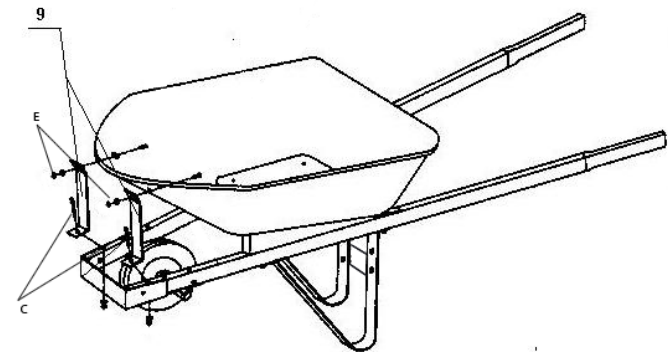
9. Slide the NOSE GUARD (Part 8) over the open end of the HANDLE.
10. Make sure the hole on the side of the NOSE GUARD align with the hole on the HANDLE.
11. Insert Bolts (D) through the NOSE GUARD and then into the HANDLE.
12. Secure the HANDLE and NOSE GUARD with 2 Locking nuts and washers (F) on the 2 bolts.

STEP 3:



13. Insert the AXLE (Part 7) into one AXLE BRACKET (Part 6), through the WHEEL (Part 11), add 2 Washers (G) on the each side of the wheel, then into the other AXLE BRACKET.
14. Insert Bolts (C) into the second hole on the HANDLE, and through the AXLE BRACKET, and then secure the bolts with 2 Locking nuts and washers (F).

STEP 4:



16. Insert Bolts (C) through first hole on the TRAY BRACE (Part 9) and the hole in the HANDLE, and then through the AXLE BRACKET, and secure on the bottom of the HANDLE with 2 Locking nuts and washers (F).
17. Insert Bolts (E) into the holes in the TRAY and through the hole on the TRAY BRACE and secure them with 2 Locking nuts and washers (F) on the outside of the TRAY.
19. When assembly is completed, tighten all bolts.